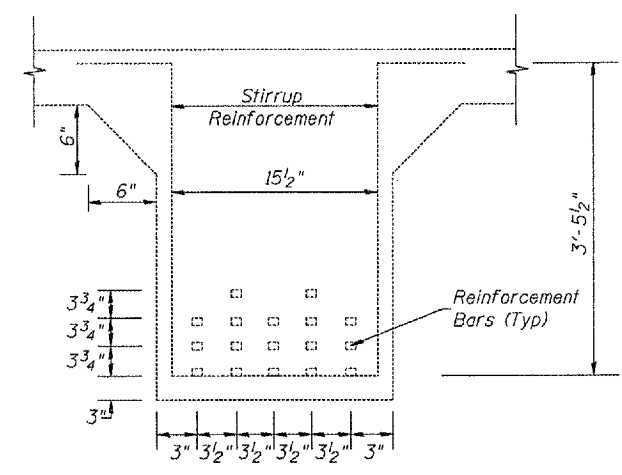


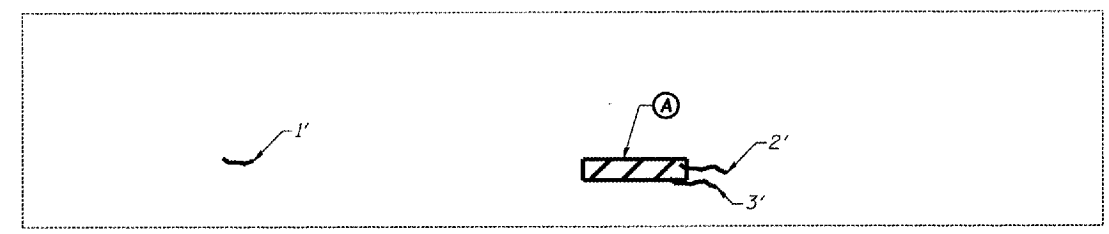
Contract #68677

STRUCTURAL REPAIR OF CONCRETE

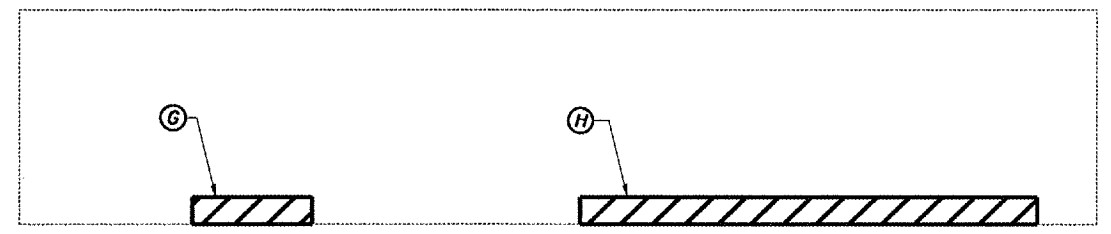
Designation	Size	Area (Sq. Ft.)
A	3' x 0.7'	2.1
B	5' x 0.7'	3.5
C	6' x 0.7'	4.2
D	2' x 1.7'	3.4
E	3' x 1.7'	5.1
F	3' x 1.7'	5.1
G	5' x 0.7'	3.5
H	26' x 0.7'	18.2
I	12' x 0.7'	8.4
J	5' x 0.7'	3.5
K	5' x 0.3'	1.5
L	16' x 1.7'	27.2
M	21' x 1.7'	35.7
N	10' x 1.7'	17.0
Total =		138.4



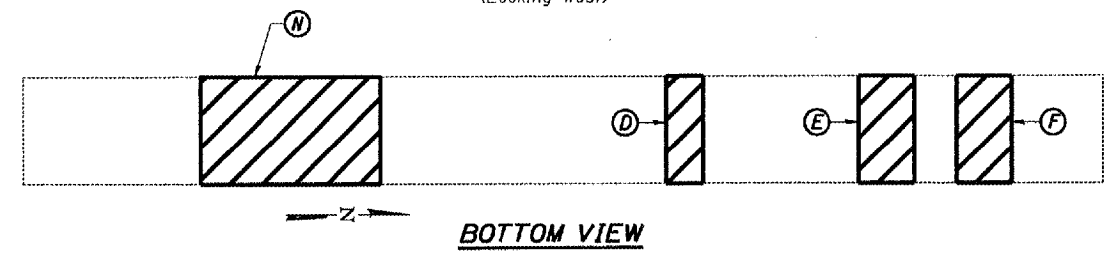
SECTION THRU CONCRETE GIRDERS



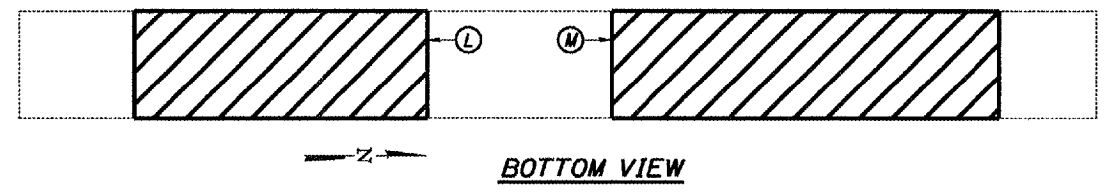
CONCRETE GIRDER #3
(Looking West)



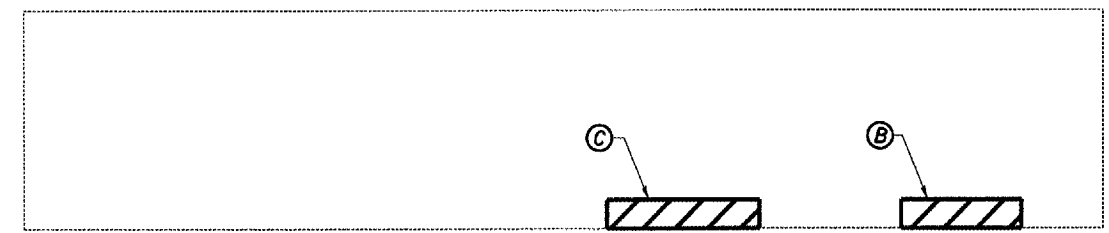
CONCRETE GIRDER #6
(Looking West)



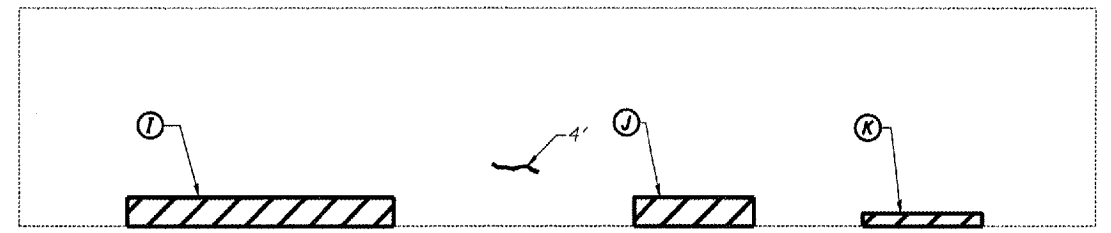
BOTTOM VIEW



BOTTOM VIEW



CONCRETE GIRDER #3
(Looking East)



CONCRETE GIRDER #6
(Looking East)

Note:
The quantities shown are for estimating purposes only. Area to be repaired will be determined by the Engineer at the time of construction. Actual repair locations shall be shown on the as-built plans.

LEGEND

- Structural Repair of Concrete (Depth Equal to or less than 5 in.)
- Epoxy Crack Sealing

BILL OF MATERIAL

ITEM	UNIT	TOTAL
Structural Repair of Concrete (Depth Equal to or less than 5 in.)	Sq. Ft.	139
Epoxy Crack Sealing	Foot	10

LIN ENGINEERING, LTD.
313 W. Chestnut
Channahon, Illinois 62620
Tel: 815-433-6668 Fax: 815-433-4705
Designed By: STD Checked By: RMD Drawn By: JWD
Date: 11/05 File: 0520006.dgn

REVISIONS	
NAME	DATE

ILLINOIS DEPARTMENT OF TRANSPORTATION
CONCRETE GIRDER REPAIR
F.A.P. 310 (U.S. 67) OVER CAMP CREEK
SECTION (40B)BR
McDONOUGH COUNTY
STA. 286+90
S.N. 055-0006