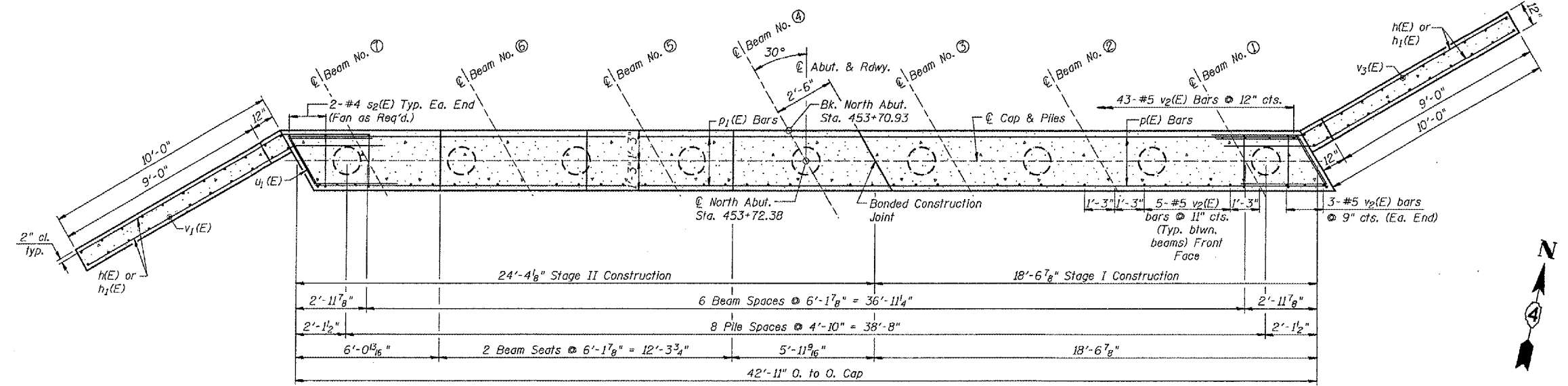
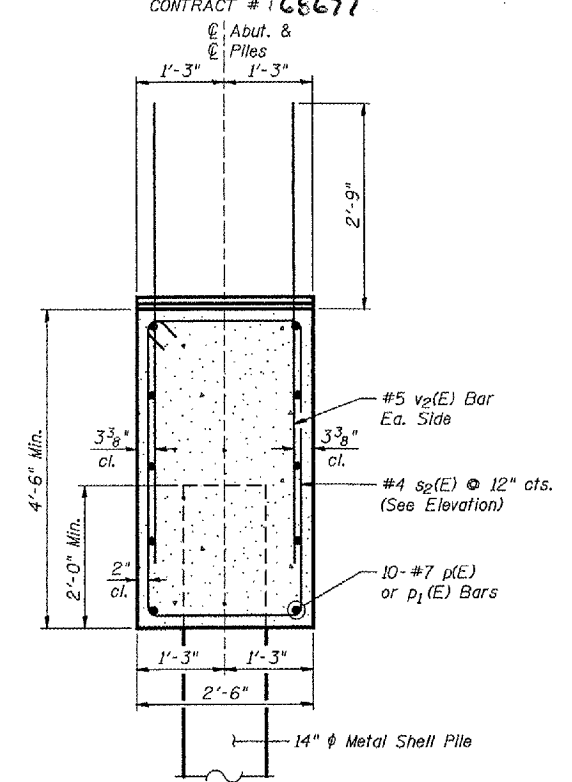


ELEVATION
(Looking North)



PLAN

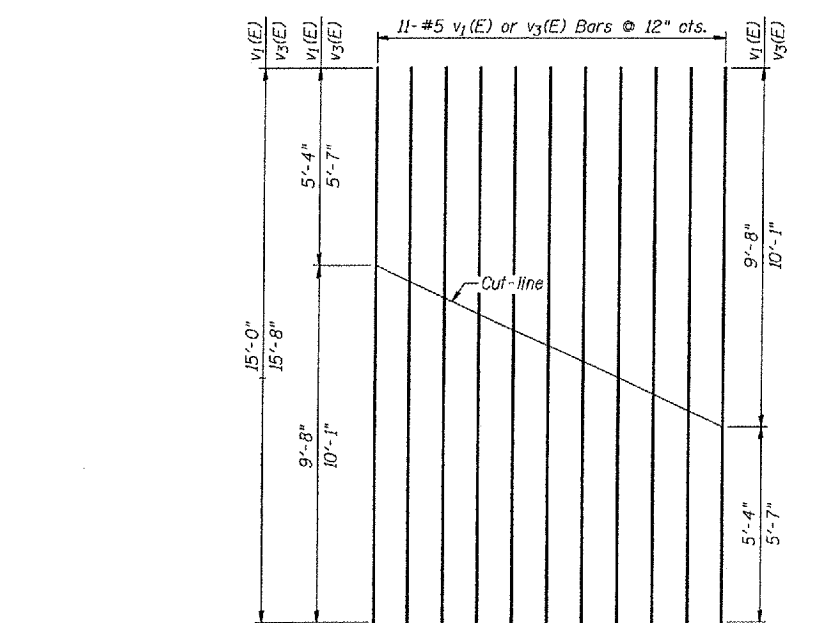


SECTION THRU ABUT.
(@ RT. L's)

BILL OF MATERIAL - NORTH ABUTMENT

| Bar | No. | Size | Length | Shape |
|---------------------------------------|-----|---------|--------|-------|
| h(E) | 32 | #8 | 14'-6" | — |
| h1(E) | 28 | #5 | 13'-6" | — |
| p(E) | 10 | #7 | 18'-3" | — |
| p1(E) | 10 | #7 | 24'-0" | — |
| s2(E) | 28 | #4 | 13'-5" | □ |
| u1(E) | 10 | #6 | 9'-5" | └ |
| v1(E) | 11 | #5 | 15'-0" | — |
| v2(E) | 79 | #5 | 5'-6" | — |
| v3(E) | 11 | #5 | 15'-8" | — |
| Concrete Structures | | Cu. Yd. | 21.6 | |
| Reinforcement Bars (Epoxy Coated) | | Pound | 3700 | |
| Furnishing Metal Shell Piles, 14"x14" | | Foot | 540 | |
| Driving Piles | | Foot | 540 | |
| Bar Splicers | | Each | 10 | |
| Structure Excavation | | Cu. Yd. | 192 | |

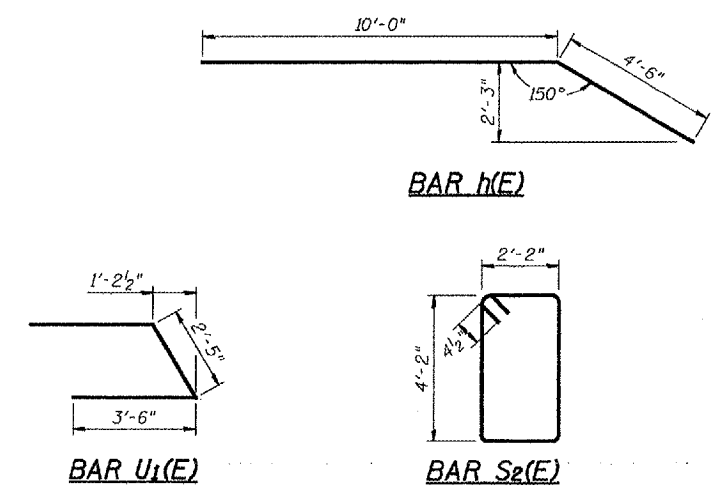
Notes:
 Hatched area of wings to be poured after beams are in place and deck slab has been poured. Quantity of concrete for hatched area is included with concrete superstructure on sheet 7 of 14.
 Reinforcement Bars Designated (E) Shall Be Epoxy Coated.
 All exposed edges shall have standard 3/4" chamfers. Except as noted.
 Pour steps monolithically with cap.
 Fan s2(E) Bars as Required at Stage Line.



FIELD CUTTING DIAGRAM v1(E) or v3(E) BARS
 Order v1(E) or v3(E) Bars Full Length. Cut as Shown and Use Remainder of Bars in Opposite Face

PILE DATA

| | |
|--------------------------------|-----------------------------------|
| Type & Size | Metal Shell - 14" φ x 0.25" Walls |
| Nominal Required Bearing | 330 kips |
| Allowable Resistance Available | 110 kips |
| Est. Length | 60' |



NORTH ABUTMENT
 F.A.P. 310, SECTION (41A)BR-1
 U.S. ROUTE 67 OVER GRINDSTONE CREEK
 MCDONOUGH COUNTY
 STA. 454+20 (S.N. 055-0049)