

B.M. #2 CHISELED "□" ON E. FOUNDATION OF SIGN FOR EB I-74 ON E. SIDE OF IL 49 S & S. OF SE RAMP STA. 325+80.458, 33.70' LT, ELEV 666.960

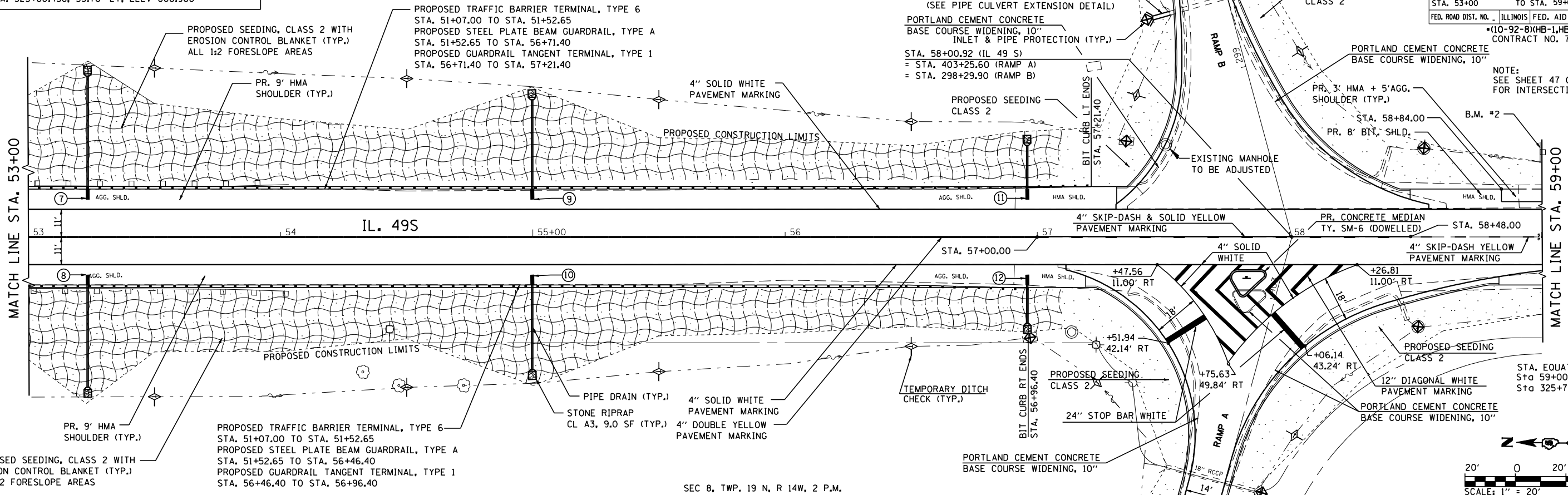
SEC 9, TWP. 19 N, R 14W, 2 P.M.

PROP. PIPE CULVERT WITH END SECTION CLASS A, TY.1, 18", 7.5' US R = 665.106, DS R = 665.051 (SEE PIPE CULVERT EXTENSION DETAIL)

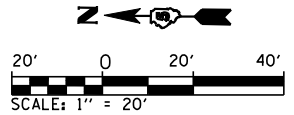
| F.A.I. RTE. | SECTION | COUNTY | TOTAL SHEETS | SHEET NO. |
|-------------|---------|-----------|--------------|-----------|
| 74 | | CHAMPAIGN | 122 | 36 |

STA. 53+00 TO STA. 59+00
ILLINOIS FED. AID PROJECT
*10-92-8XHB-1,HB-4)BR CONTRACT NO. 70001

NOTE:
SEE SHEET 47 OF 122 FOR INTERSECTION DETAIL

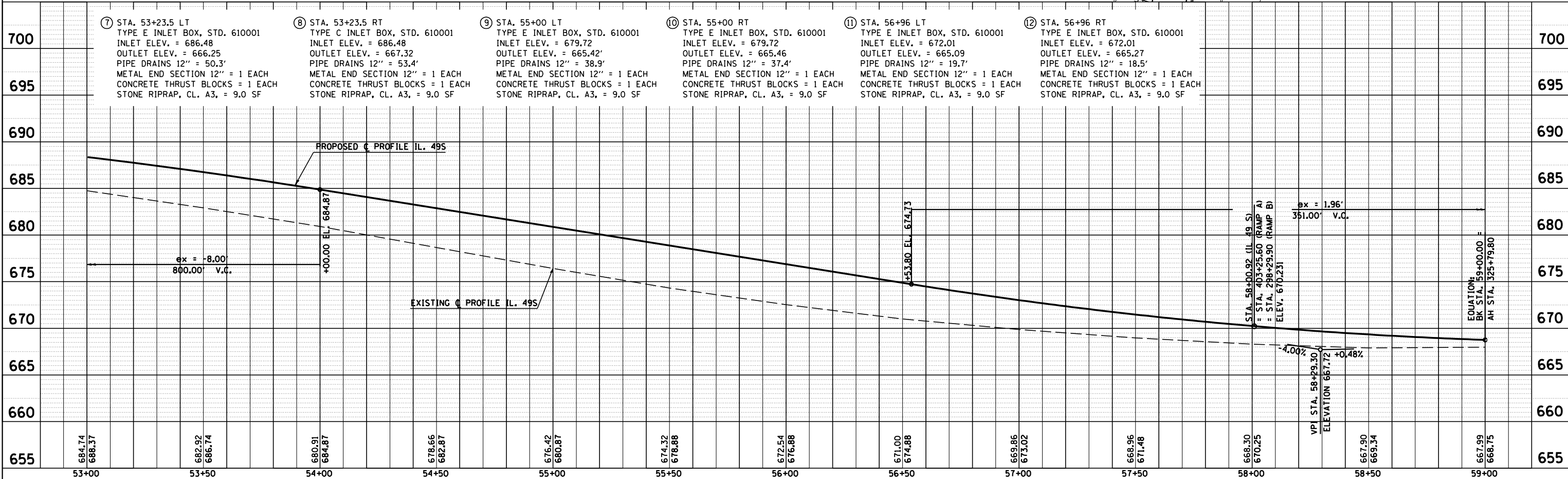


SEC 8, TWP. 19 N, R 14W, 2 P.M.



| | |
|------|----|
| DATE | BY |
| | |
| | |
| | |
| | |

| | |
|------|----|
| DATE | BY |
| | |
| | |
| | |
| | |



- ⑦ STA. 53+23.5 LT TYPE E INLET BOX, STD. 610001 INLET ELEV. = 686.48 OUTLET ELEV. = 666.25 PIPE DRAINS 12" = 50.3' METAL END SECTION 12" = 1 EACH CONCRETE THRUST BLOCKS = 1 EACH STONE RIPRAP, CL. A3, = 9.0 SF
- ⑧ STA. 53+23.5 RT TYPE C INLET BOX, STD. 610001 INLET ELEV. = 686.48 OUTLET ELEV. = 667.32 PIPE DRAINS 12" = 53.4' METAL END SECTION 12" = 1 EACH CONCRETE THRUST BLOCKS = 1 EACH STONE RIPRAP, CL. A3, = 9.0 SF
- ⑨ STA. 55+00 LT TYPE E INLET BOX, STD. 610001 INLET ELEV. = 679.72 OUTLET ELEV. = 665.42' PIPE DRAINS 12" = 38.9' METAL END SECTION 12" = 1 EACH CONCRETE THRUST BLOCKS = 1 EACH STONE RIPRAP, CL. A3, = 9.0 SF
- ⑩ STA. 55+00 RT TYPE E INLET BOX, STD. 610001 INLET ELEV. = 679.72 OUTLET ELEV. = 665.46 PIPE DRAINS 12" = 37.4' METAL END SECTION 12" = 1 EACH CONCRETE THRUST BLOCKS = 1 EACH STONE RIPRAP, CL. A3, = 9.0 SF
- ⑪ STA. 56+96 LT TYPE E INLET BOX, STD. 610001 INLET ELEV. = 672.01 OUTLET ELEV. = 665.09 PIPE DRAINS 12" = 19.7' METAL END SECTION 12" = 1 EACH CONCRETE THRUST BLOCKS = 1 EACH STONE RIPRAP, CL. A3, = 9.0 SF
- ⑫ STA. 56+96 RT TYPE E INLET BOX, STD. 610001 INLET ELEV. = 672.01 OUTLET ELEV. = 665.27 PIPE DRAINS 12" = 18.5' METAL END SECTION 12" = 1 EACH CONCRETE THRUST BLOCKS = 1 EACH STONE RIPRAP, CL. A3, = 9.0 SF

IL 49S STA. 53+00 TO STA. 59+00