

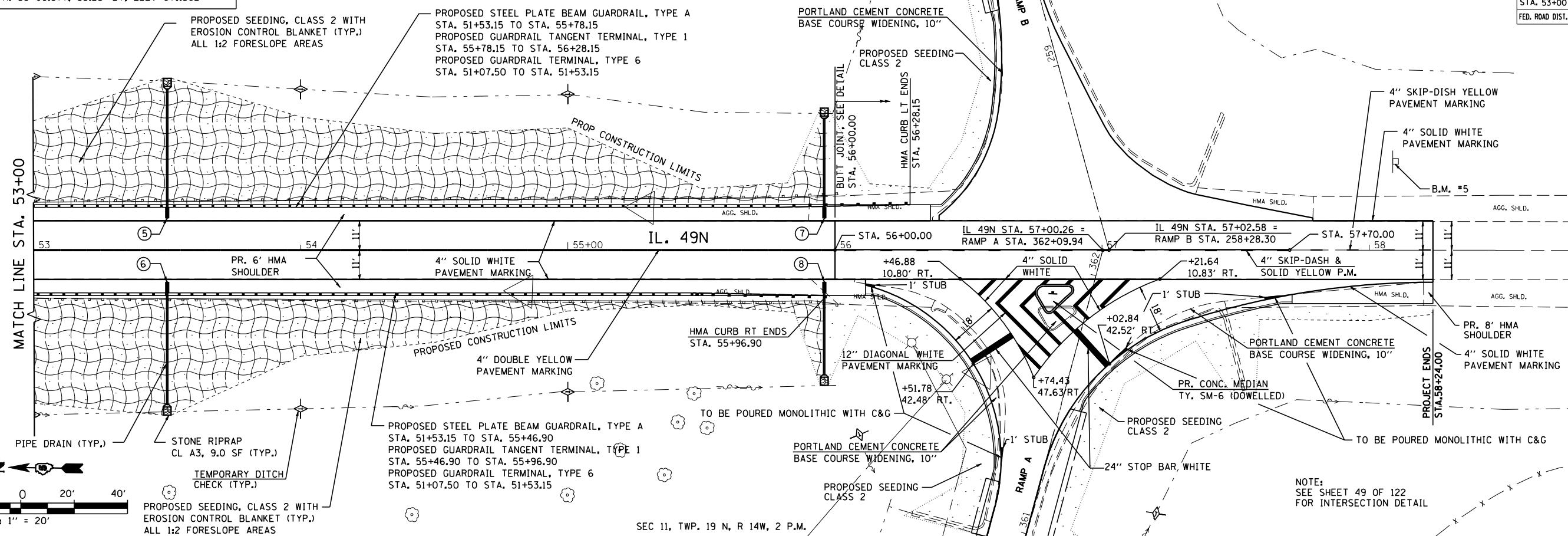
B.M. #5 CHISELED "□" ON W. FOUNDATION OF SIGN FOR NB IL 49 S. OF ENT. RAMP FOR EB I-74 STA. 58+09.877, 33.23' LT, ELEV 671.562

SEC 12, TWP. 19 N, R 14W, 2 P.M.

F.A.I. RTE.	SECTION	COUNTY	TOTAL SHEETS	SHEET NO.
74	.	VERMILION	122	40

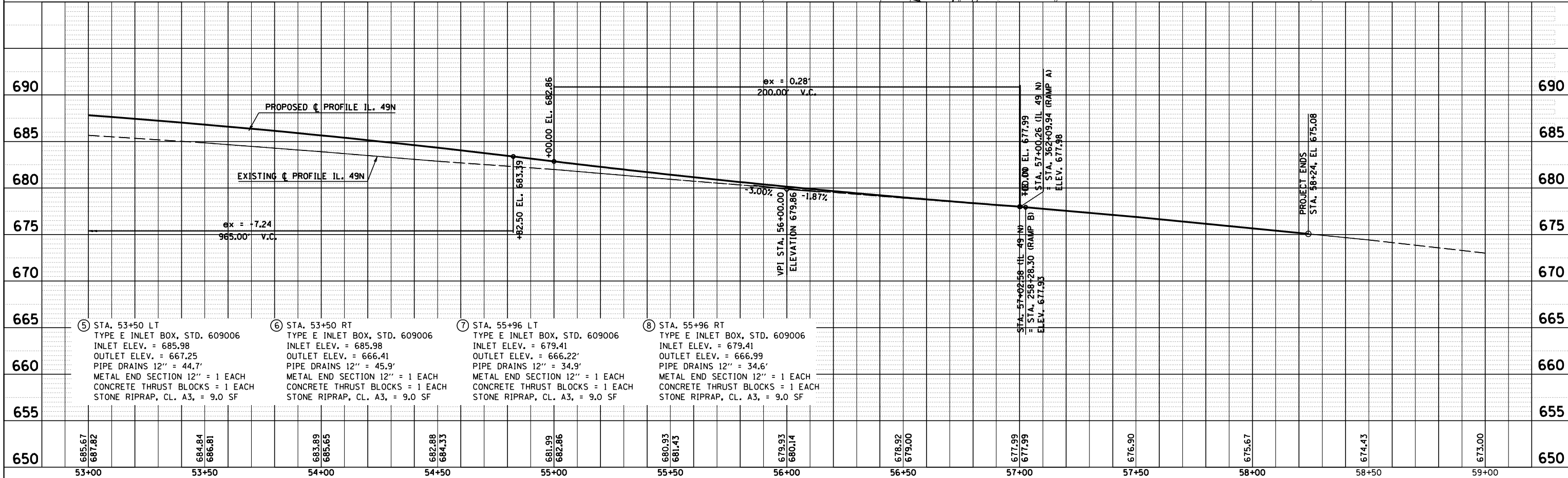
  

STA. 53+00	TO STA. 58+24
ILLINOIS FED. AID PROJECT	
*(10-92-8)XHB-1, HB-4)BR	
CONTRACT NO. 70001	



PLAN	DATE
BY	
CHECKED	
NO.	

PROFILE	DATE
BY	
CHECKED	
NO.	



IL 49N STA. 53+00 TO STA. 58+24

Station	Elevation	Station	Elevation	Station	Elevation	Station	Elevation
53+00	685.67 687.82	53+50	684.84 686.81	54+00	683.89 685.65	54+50	682.88 684.33
55+00	681.99 682.86	55+50	680.93 681.43	56+00	679.93 680.14	56+50	678.92 679.00
57+00	677.99 677.99	57+50	676.90	58+00	675.67	58+50	674.43
59+00	673.00						