

F.A.P. RTE.	SECTION	COUNTY	TOTAL SHEETS	SHEET NO.
693	120B	McLEAN	31	1
F.A.P. PROJ.		ILLINOIS PROJECT		

INDEX OF SHEETS

1	TITLE SHEET
2	GENERAL NOTES/COMMITMENTS
3	SUMMARY OF QUANTITIES
4	TYPICAL SECTIONS
5-6	SCHEDULES
7-9	PLAN AND PROFILE SHEETS
10	DETOUR SIGNING PLAN
11	RIGHT-OF-WAY PLANS
12-23	STRUCTURE PLANS
24-28	DISTRICT DETAILS
29	HOT-MIX ASPHALT MILLING DETAIL
30-31	CROSS SECTIONS

**STATE OF ILLINOIS
DEPARTMENT OF TRANSPORTATION
DIVISION OF HIGHWAYS
PLANS FOR PROPOSED
FEDERAL AID HIGHWAY**

**F.A.P. 693 (IL. 9)
SECTION 120B
PROJECT ACBRF-0693(062)
McLEAN COUNTY**

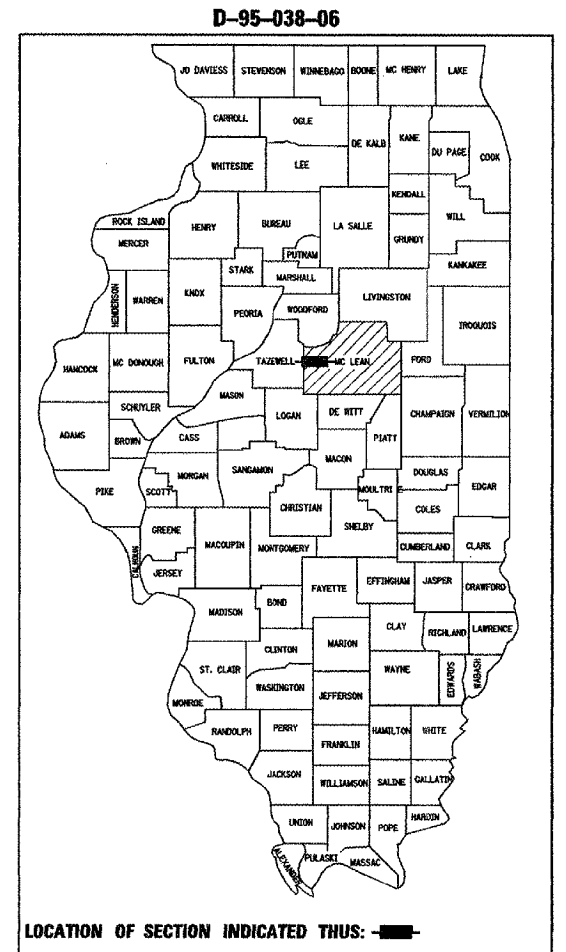
C-95-039-06

**BRIDGE REPLACEMENT OVER WEST FORK SUGAR CREEK,
4.4 MILE NORTHWEST OF ILLINOIS 122**

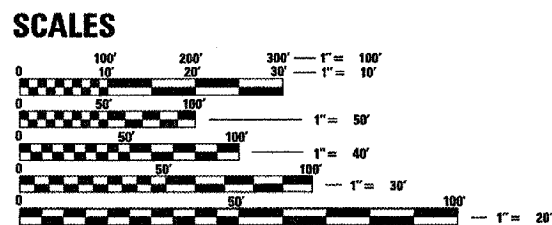
**3TH P.M.
R 1 W**

HIGHWAY STANDARDS

000001-04	STANDARD SYMBOLS, ABBREVIATIONS AND PATTERNS
001001-01	AREAS OF REINFORCEMENT REBARS
001006	DECIMAL OF AN INCH AND OF A FOOT
280001-03	TEMPORARY EROSION CONTROL SYSTEMS
420001-06	PAVEMENT JOINTS
420401-05	BRIDGE APPROACH PAVEMENT
421001-01	BAR REINFORCEMENT FOR CRC PAVEMENT
482011-02	HMA SHLD. STRIPS/ SHLDS. WITH RESURFACING OR WIDENING AND RESURFACING PROJECTS
515001-02	NAME PLATE FOR BRIDGES
630001-07	STEEL PLATE BEAM GUARDRAIL
630201-04	PCC/HMA STABILIZATION AT STEEL PLATE BEAM GUARDRAIL
630301-04	SHOULDER WIDENING FOR TYPE 1 (SPECIAL) GUARDRAIL TERMINALS
631031-06	TRAFFIC BARRIER TERMINAL, TYPE 6
635006-02	REFLECTOR AND TERMINAL MARKER PLACEMENT
635011-01	REFLECTOR MARKER AND MOUNTING DETAILS
666001	RIGHT OF WAY MARKERS
667101	PERMANENT SURVEY MARKERS
701006-02	OFF-ROAD OPERATIONS 2L, 2W 4.5 m (15') TO 600 mm (24") FROM PAVEMENT EDGE
701301-02	LANE CLOSURE, 2L, 2W, SHORT TIME OPERATIONS
702001-06	TRAFFIC CONTROL DEVICES
780001-01	TYPICAL PAVEMENT MARKINGS
781001-02	TYPICAL APPLICATIONS RAISED REFLECTIVE PAVEMENT MARKINGS
601101	CONCRETE HEADWALL FOR PIPE DRAIN



OTHER PRINCIPAL ARTERIAL
F.A.P. RTE 693 (IL 9) ADT (2006) = 2400
PV = 87.8% SU = 5.8% MU = 6.4%
DESIGN SPEED = 55 MPH.



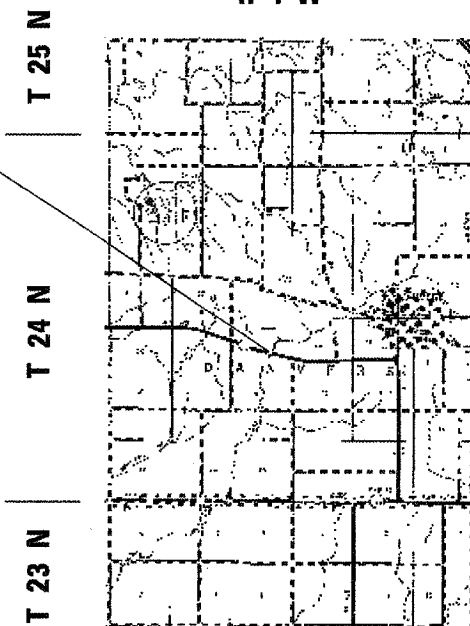
FULL SIZE PLANS HAVE BEEN PREPARED USING STANDARD ENGINEERING SCALES. REDUCED SIZED PLANS WILL NOT CONFORM TO STANDARD SCALES. IN MAKING MEASUREMENTS ON REDUCED PLANS, THE ABOVE SCALES MAY BE USED.

MICROFILMED _____
REEL NUMBER _____
AWARDED _____
RESIDENT ENGINEER _____
AS BUILT CHANGES WERE MADE
ON THE FOLLOWING SHEETS _____

JULIE 1-800-892-0123
DISTRICT 5 NO. (217) 465-4181
PROJECT ENGINEER: KENSIL GARNETT
UNIT CHIEF: NANCY FASIG
TOWNSHIP: DANVERS

CONTRACT NO. 70518

SECTION 120B INCLUDES:
EXISTING STRUCTURE (SN 057-0090) AT STA. 1209+00 CARRYING FAP RTE. 693 (IL 9) OVER WEST FORK SUGAR CREEK TO BE REMOVED AND REPLACED.
PROPOSED STRUCTURE (SN 057-0242) AT STA. 1209+03, SINGLE SPAN, 80' BK. TO BK. ABUTMENTS.



**LOCATION MAP
NOT TO SCALE**

**GROSS LENGTH = 800.00 FEET = 0.152 MILES
NET LENGTH = 800.00 FEET = 0.152 MILES**



James Paul Biggers
JAMES PAUL BIGGERS P.E.
DATE 8/13/07
LICENSE EXPIRES 11/30/07

PLANS PREPARED BY:



JOHNSON, DEPP & QUISENBERRY
CONSULTING ENGINEERS
6480 South Sixth Street Road, Suite B
Springfield, Illinois 62712
Phone: (217) 529-4534 Fax: (217) 529-8278

STATE OF ILLINOIS
DEPARTMENT OF TRANSPORTATION
DIVISION OF HIGHWAYS

SUBMITTED 8/13 20 07
Joseph E. Gowen
DEPUTY DIRECTOR OF HIGHWAYS, REGION ENGINEER
October 12, 20 07
Cris E. Horn
ENGINEER OF DESIGN AND ENVIRONMENT
October 12, 20 07
Milton R. Seas
DIRECTOR OF HIGHWAYS, CHIEF ENGINEER

PRINTED BY THE AUTHORITY
OF THE STATE OF ILLINOIS