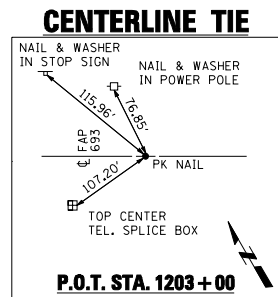
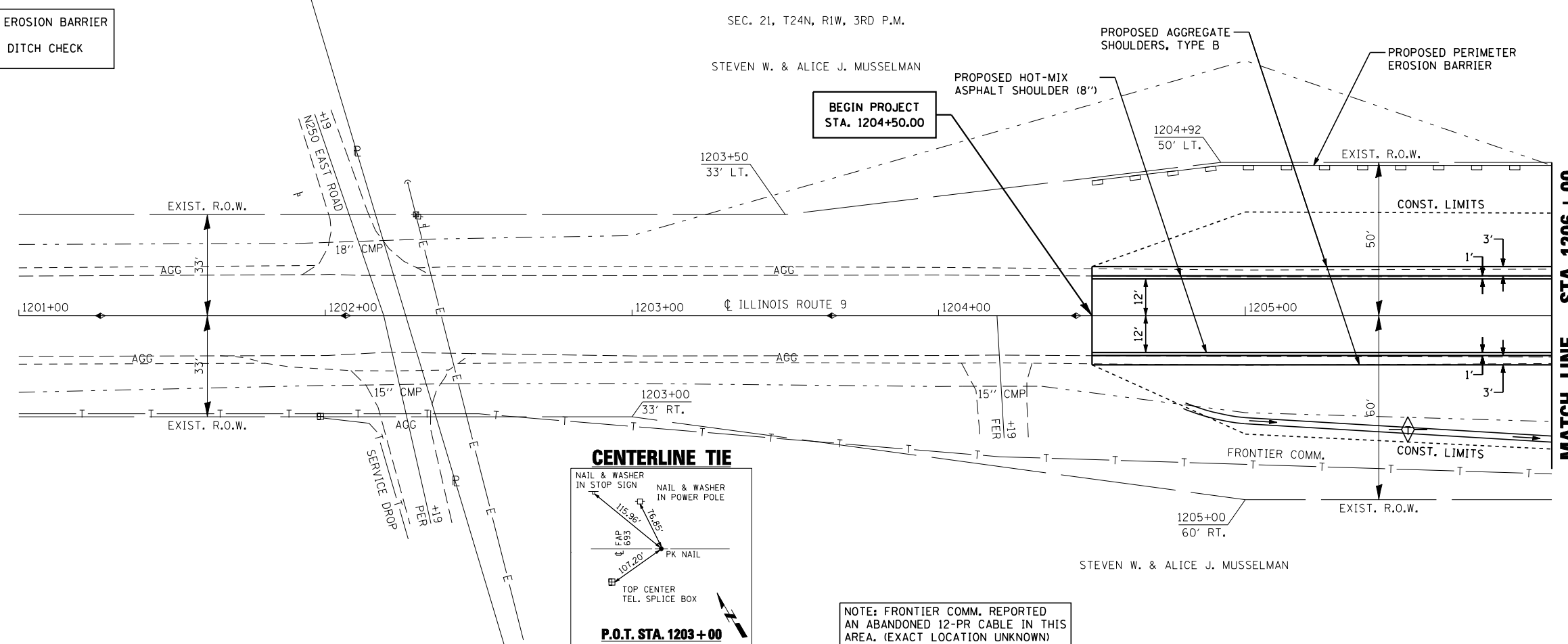
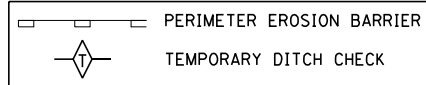
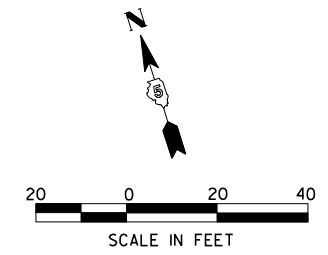


ROUTE NO.	SECTION	COUNTY	TOTAL SHEETS	SHEET NO.
FAP 693	120B	MCLEAN	31	7
STA 1201+00	TO STA 1206+00			
FED. ROAD DIST. NO.		ILLINOIS FED. AID PROJECT		

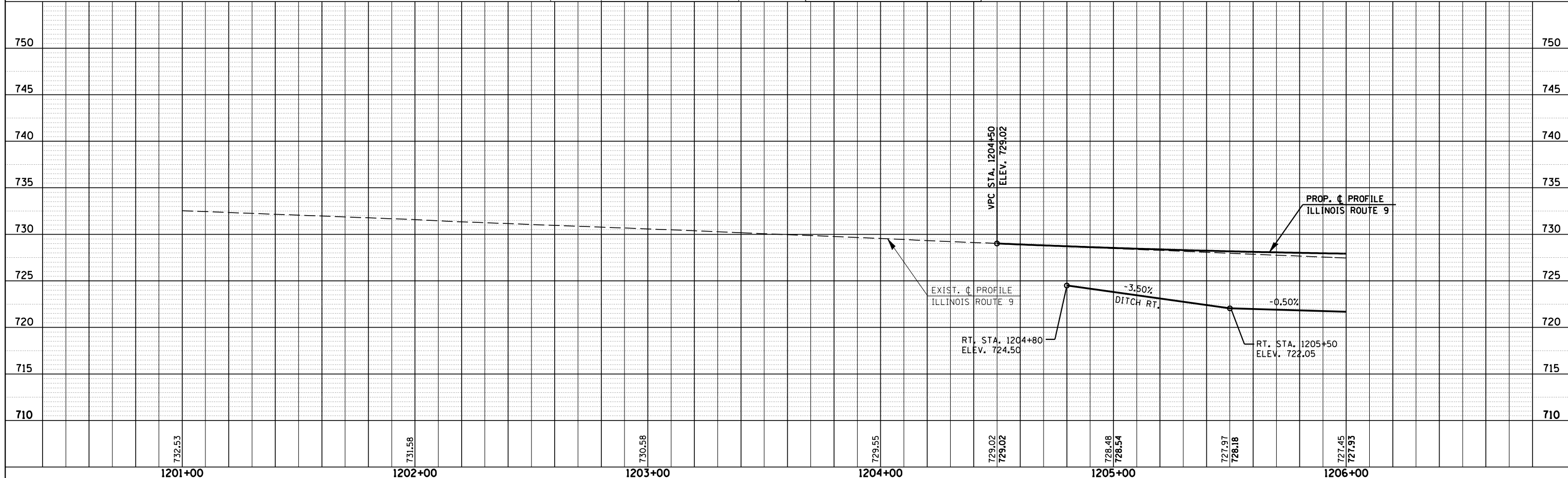


NOTE: FRONTIER COMM. REPORTED AN ABANDONED 12-PR CABLE IN THIS AREA. (EXACT LOCATION UNKNOWN)



PLAN	SURVEYED	BY	DATE
NO.			
NOTE BOOK	PLotted		
	BY		
	NO. OF WAY CHECKED		
	CADD FILE NAME		

PROFILE	SURVEYED	BY	DATE
NO.			
NOTE BOOK	PLotted		
	BY		
	NOTED		
	STRUCTURE NOTATIONS CHKD		



ILLINOIS ROUTE 9 - STA. 1201+00 TO STA. 1206+00