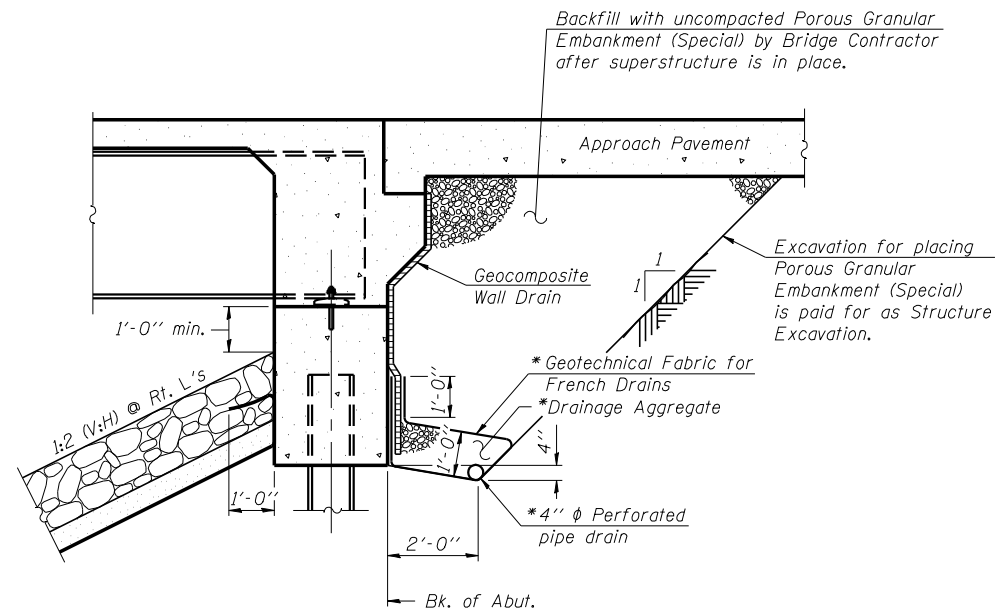


STATE OF ILLINOIS
DEPARTMENT OF TRANSPORTATION

SHEET 5
OF 12

F.A.P. RTE.	SECTION	COUNTY	TOTAL SHEETS	SHEET NO.
693	120B	MCLEAN	31	16
FED. ROAD DIST. NO.		ILLINOIS	FED. AID PROJECT	
CONTRACT NO. 70518				

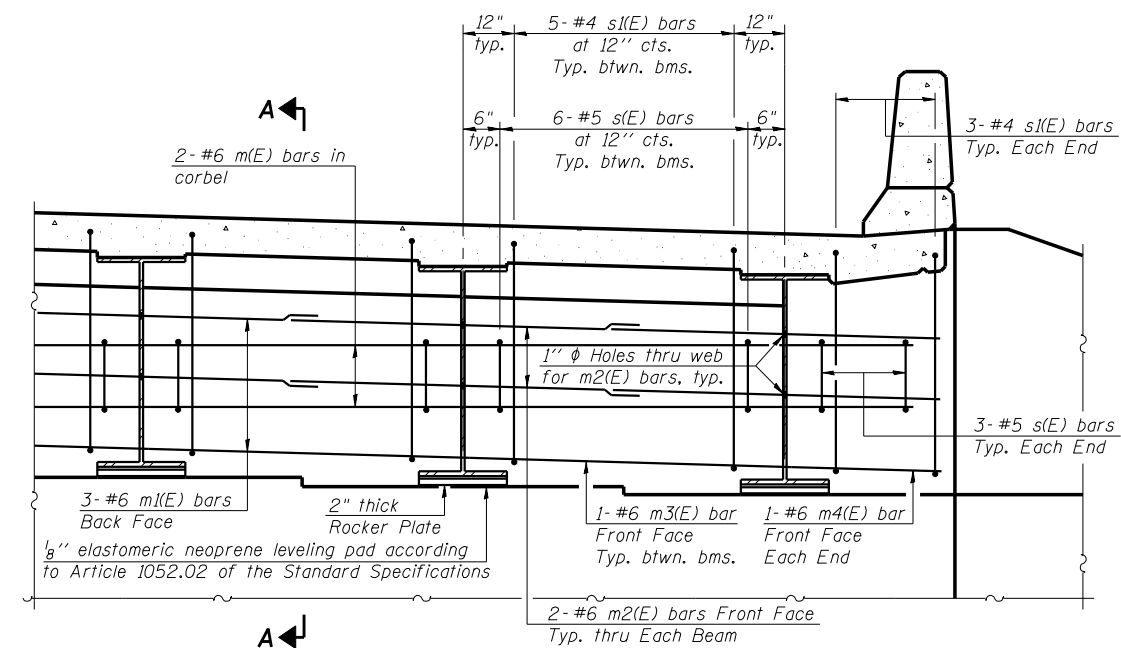


SECTION THRU INTEGRAL ABUTMENT
(Horiz. dim. @ Rt. L's)

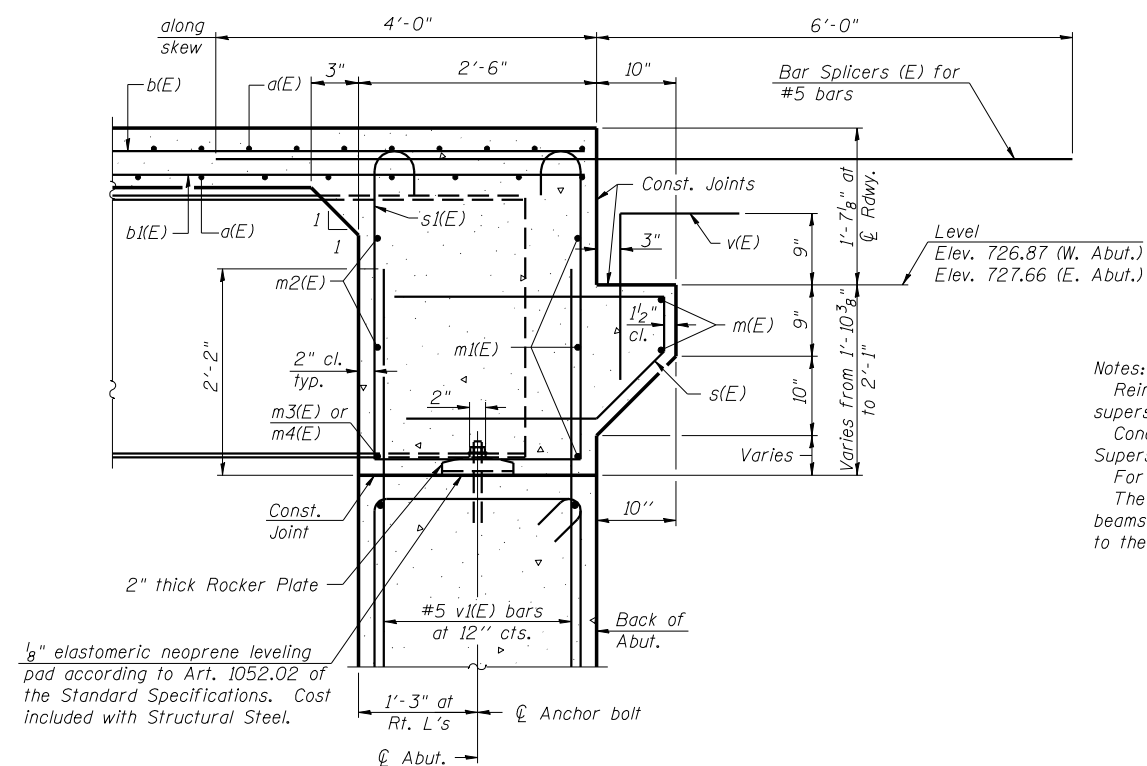
* Included in the cost of Pipe Underdrains for Structures.

Note:

All drainage system components shall extend to 2'-0" from the end of each wingwall except an outlet pipe shall extend until intersecting with the side slopes. The pipes shall drain into concrete headwalls. (See Article 601.05 of the Standard Specifications and Highway Standard 60110).



DIAPHRAGM ELEVATION AT ABUTMENT



SECTION A-A

Dimensions at right angles to abutment, except as shown.

Notes:

Reinforcement bars in diaphragm are billed with superstructure on sheet 6 of 12.
Concrete in diaphragm is included with Concrete Superstructure on sheet 6 of 12.
For details of bars s(E) & s(E) see sheet 6 of 12.
The s(E) and s(E) bars shall be placed parallel to the beams. Spacing for these bars shall be at right angles to the beams.

MIN. BAR LAP

#6 bar = 2'-9"

DIAPHRAGM DETAILS
FAP 693 (IL 9) OVER
WEST FORK SUGAR CREEK
FAP ROUTE 693 SECTION 120B
MCLEAN COUNTY
STATION 1209+03.00
STRUCTURE NO. 057-0242



DESIGNED:	CDB	DRAWN:	SJS
CHECKED:	DCD	CHECKED:	CDB/DCD

SI-DSI

11-1-06

DATE: 8/13/2007 - \$TIME\$ FILE: \$FILE\$ USER: collierbw