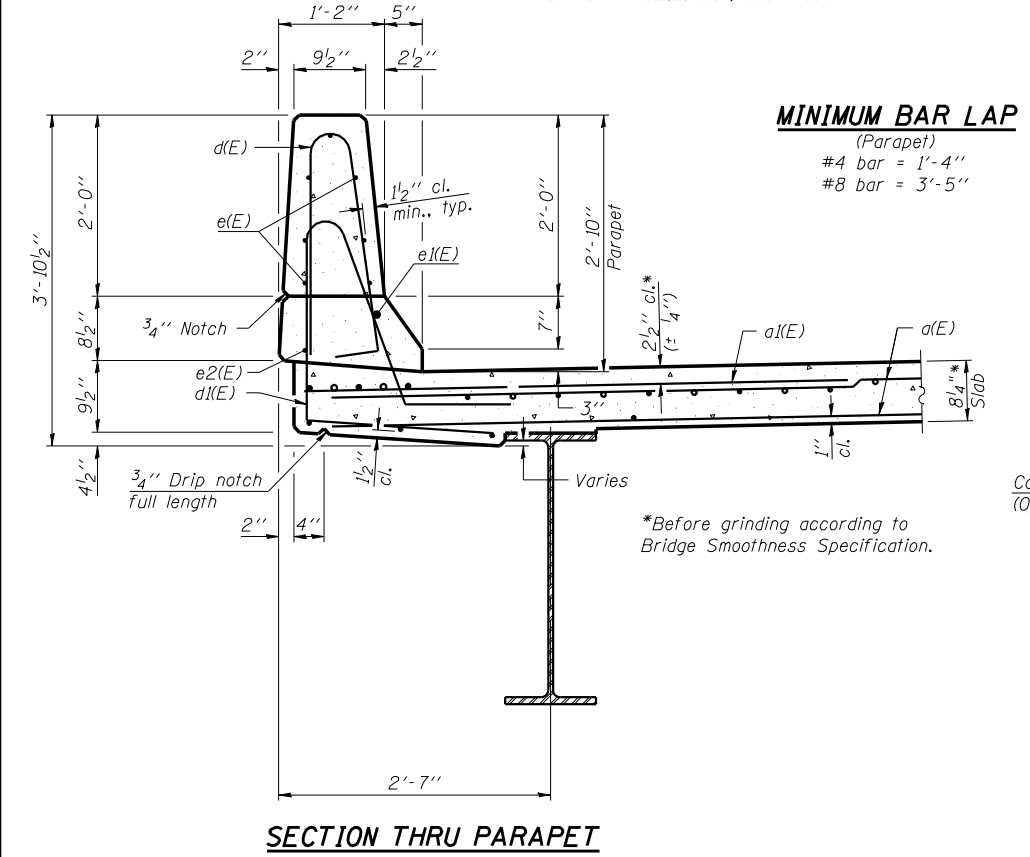
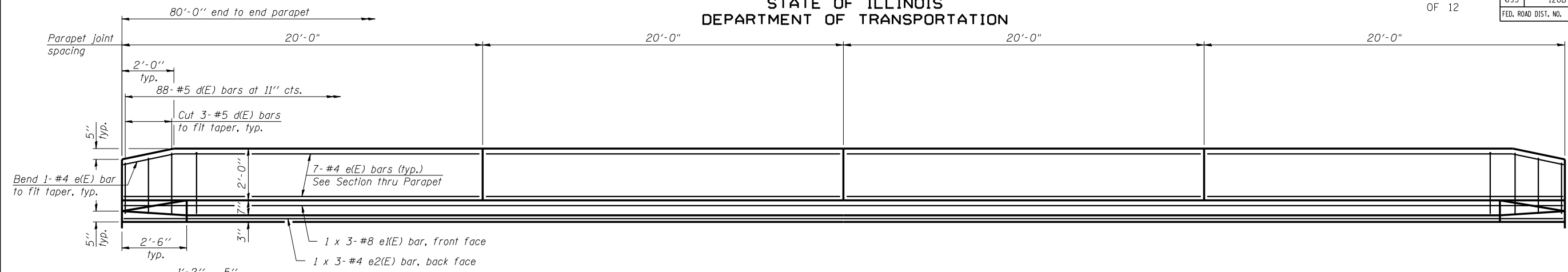


STATE OF ILLINOIS
DEPARTMENT OF TRANSPORTATION

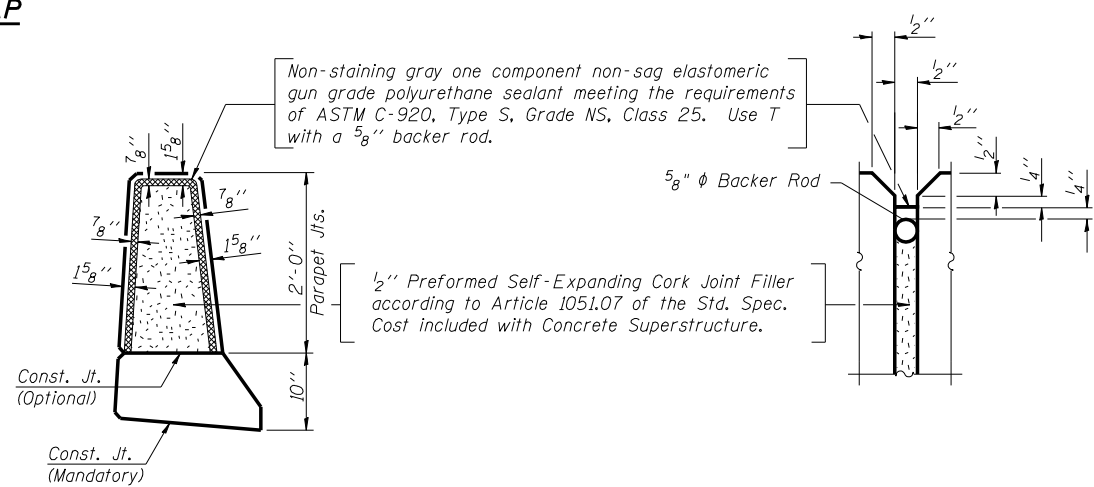
SHEET 6
OF 12

F.A.P. RTE.	SECTION	COUNTY	TOTAL SHEETS	SHEET NO.
693	120B	MCLEAN	31	17
FED. ROAD DIST. NO.	ILLINOIS	FED. AID PROJECT	CONTRACT NO. 70518	



MINIMUM BAR LAP
(Parapet)
#4 bar = 1'-4"
#8 bar = 3'-5"

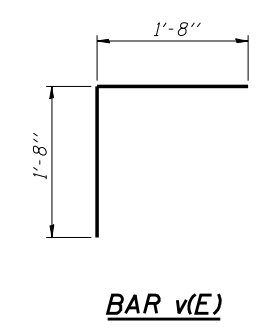
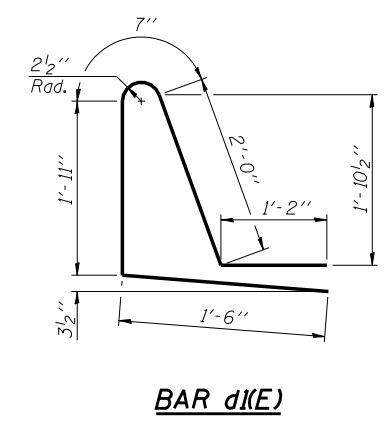
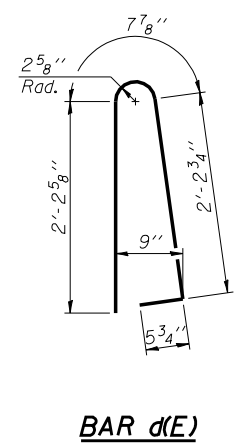
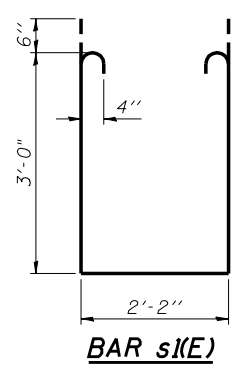
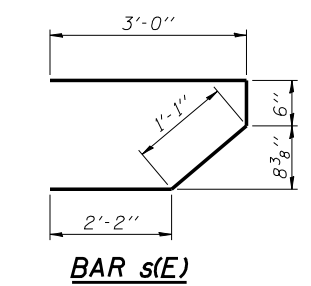
INSIDE ELEVATION OF PARAPET



PARAPET JOINT DETAILS

SUPERSTRUCTURE BILL OF MATERIAL

Bar	No.	Size	Length	Shape
a(E)	203	#5	34'-6"	—
a1(E)	214	#6	6'-0"	—
b(E)	114	#5	28'-0"	—
b1(E)	124	#5	21'-7"	—
d(E)	176	#5	5'-7"	⌒
d1(E)	176	#5	7'-2"	⌒
e(E)	56	#4	19'-8"	—
e1(E)	6	#8	28'-10"	—
e2(E)	6	#4	27'-6"	—
m(E)	4	#6	33'-0"	—
m1(E)	6	#6	34'-10"	—
m2(E)	24	#6	8'-9"	—
m3(E)	10	#6	5'-8"	—
m4(E)	4	#6	2'-3"	—
s(E)	72	#5	6'-9"	⌒
s1(E)	62	#4	9'-2"	⌒
v(E)	68	#5	3'-4"	⌒
Reinforcement Bars, Epoxy Coated		Pound	21060	
Concrete Superstructure		Cu. Yds.	112.3	



SUPERSTRUCTURE DETAILS
FAP 693 (IL 9) OVER
WEST FORK SUGAR CREEK
FAP ROUTE 693 SECTION 120B
MCLEAN COUNTY
STATION 1209+03.00
STRUCTURE NO. 057-0242

Bars indicated thus 1 x 3-#5 etc. indicates 1 line of bars with 3 lengths per line.

DATE: 8/13/2007 - \$TIME\$
USER: collierbw
FILE: \$FILE\$

JD Johnson, Depp & Quisenberry CONSULTING ENGINEERS Springfield, Illinois	
DESIGNED: CDB	DRAWN: SJS
CHECKED: DCD	CHECKED: CDB/DCD

S-I-D 11-1-06