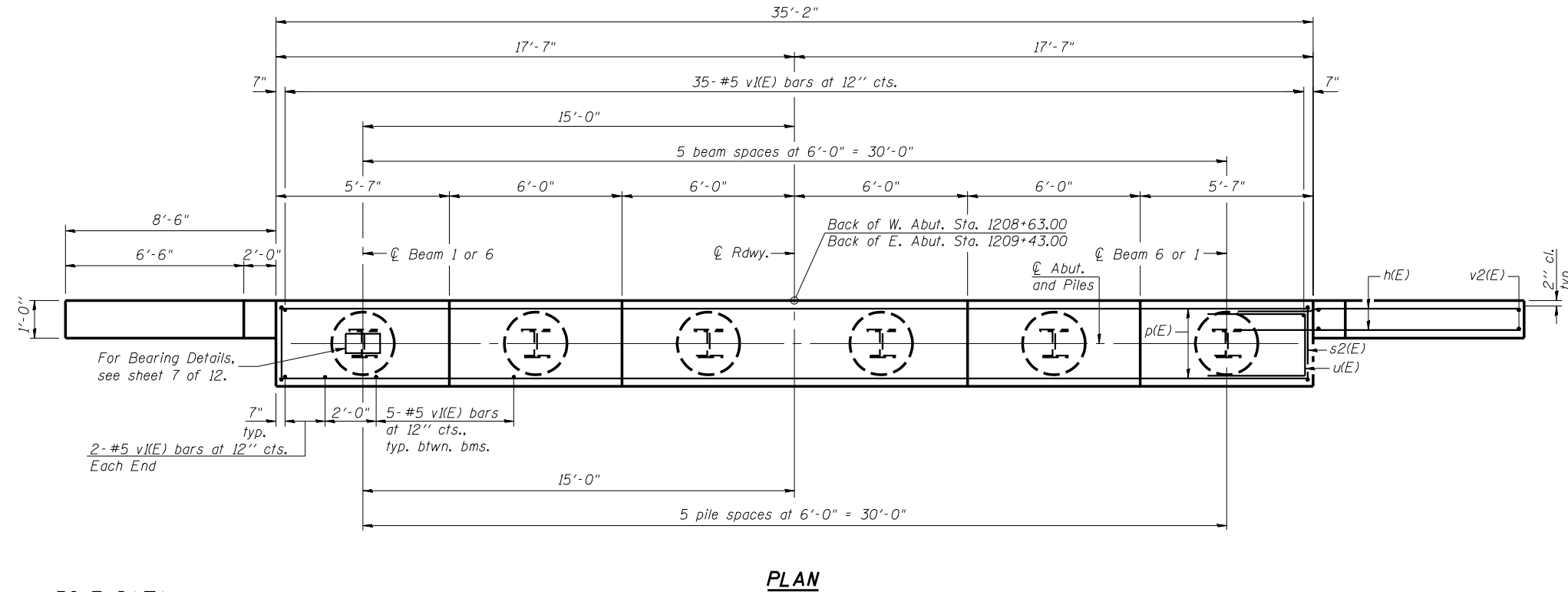
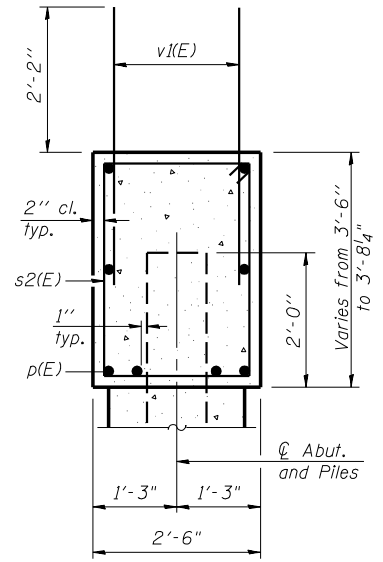
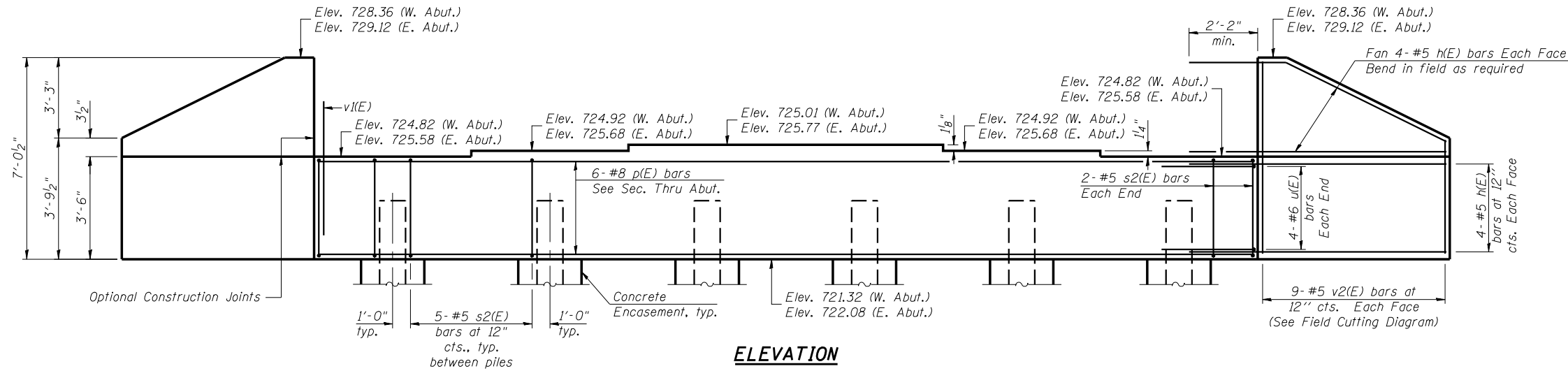


STATE OF ILLINOIS
DEPARTMENT OF TRANSPORTATION

SHEET 8
OF 12

| | | | | |
|---------------------|----------|------------------|--------------------|-----------|
| F.A.P. RTE. | SECTION | COUNTY | TOTAL SHEETS | SHEET NO. |
| 693 | 120B | MCLEAN | 31 | 19 |
| FED. ROAD DIST. NO. | ILLINOIS | FED. AID PROJECT | CONTRACT NO. 70518 | |

Notes: Pour steps monolithically with cap.



BILL OF MATERIAL

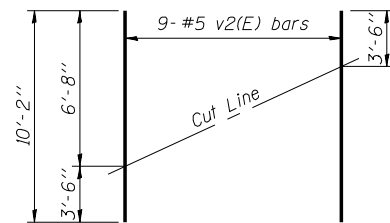
| Bar | No. | Size | Length | Shape |
|----------------------------------|-----|---------|---------|----------|
| h(E) | 32 | #5 | 10'-6" | — |
| p(E) | 6 | #8 | 34'-10" | — |
| s2(E) | 29 | #5 | 11'-8" | □ |
| u(E) | 8 | #6 | 7'-2" | — |
| v(E) | 64 | #5 | 4'-4" | — |
| v2(E) | 18 | #5 | 10'-2" | — |
| Structure Excavation | | Cu. Yd. | 279 | W. Abut. |
| | | | 415 | E. Abut. |
| Concrete Structures | | Cu. Yd. | 15.4 | |
| Reinforcement Bars, Epoxy Coated | | Pound | 1830 | |
| Furnishing Steel Piles HP12x53 | | Foot | 320 | |
| Driving Piles | | Foot | 320 | |
| Test Pile Steel HP12x53 | | Each | 1 | |
| Concrete Encasement | | Cu. Yd. | 2.1 | |

Bill of Material for 1 Abutment only, except as noted. For details of piles and Concrete Encasement, see sheet 9 of 12.

WEST AND EAST ABUTMENTS
FAP 693 (IL 9) OVER
WEST FORK SUGAR CREEK
FAP ROUTE 693 SECTION 120B
MCLEAN COUNTY
STATION 1209+03.00
STRUCTURE NO. 057-0242

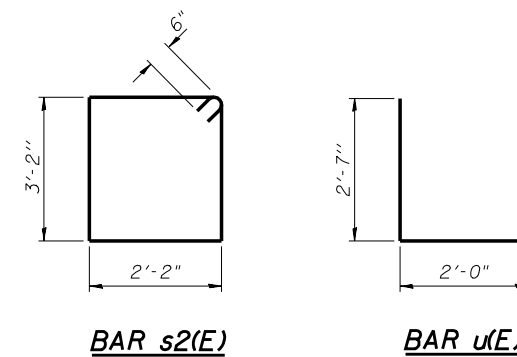
PILE DATA

Type: Steel-HP 12x53
Nominal Required Bearing: 336 kips
Allowable Resistance Available: 112 kips
Est. Length: 64'
No. Production Piles: 5 (each Abut.)
No. Test Piles: 1 (each Abut.)



FIELD CUTTING DIAGRAM

Order v2(E) full length. Cut as shown and use remainder of bars in opposite face.



| | |
|--|------------------|
| JD Johnson, Depp & Quisenberry CONSULTING ENGINEERS Springfield, Illinois | |
| DESIGNED: CDB | DRAWN: SJS |
| CHECKED: DCD | CHECKED: CDB/DCD |

AI-0

11-1-06

FILE: \$FILE\$

USER: collierbw

DATE: 8/13/2007 - \$TIME\$