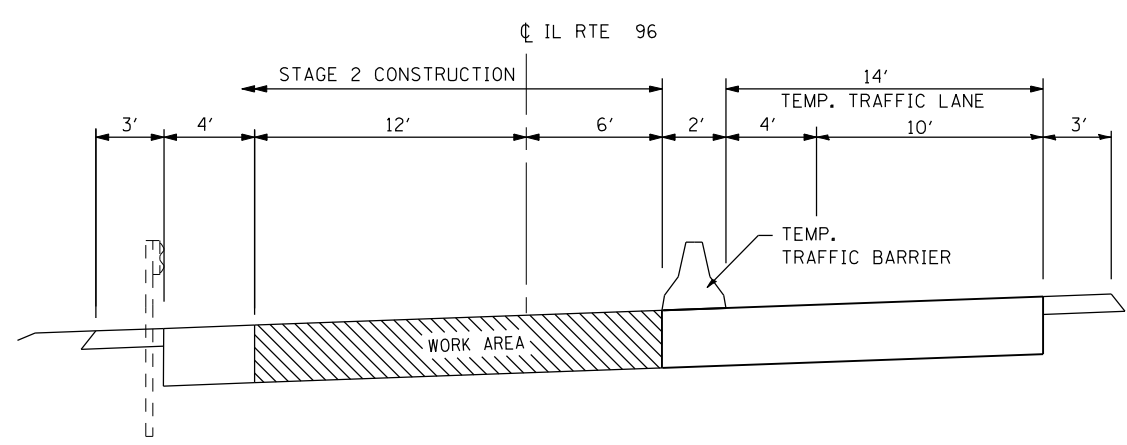
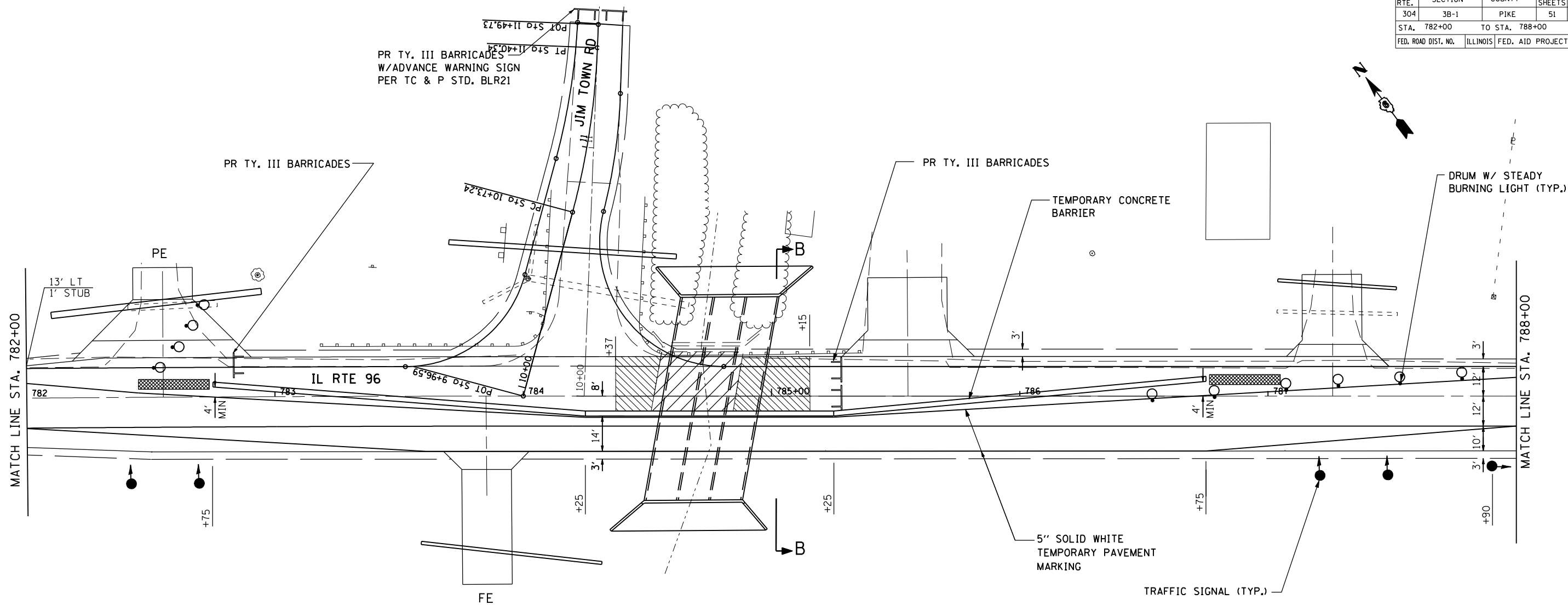


F.A.P. RTE.	SECTION	COUNTY	TOTAL SHEETS	SHEET NO.
304	3B-1	PIKE	51	15
STA. 782+00		TO STA. 788+00		
FED. ROAD DIST. NO.		ILLINOIS	FED. AID PROJECT	



STAGE 2 CONSTRUCTION SEQUENCE

1. REMOVE REMAINDER OF EXISTING BRIDGE, CONSTRUCT REMAINING PORTION OF BOX CULVERT
2. CONSTRUCT HMA BASE COURSE, 10" (LT ROADWAY AND SHOULDER) STA. 784+37 TO STA. 785+15
3. CONSTRUCT HMA BASE, 8" ON JIM TOWN ROAD
4. REMOVE STANDARD 701321 USING STANDARD 701201 AND 701301
5. CONSTRUCT LEVELING BINDER, SURFACE COURSE, HMA SHOULDER AND AGGREGATE SHOULDER USING STANDARDS 701011 AND 701306

NOTES

1. A WING BARRICADE, STANDARD 7020001 SHALL BE USED TO SUPPORT THE "SIGNAL AHEAD" SIGNS. TWO HIGH INTENSITY FLASHING LIGHTS PER BARRICADE SHALL BE INSTALLED INSTEAD OF TYPE A FLASHING LIGHTS
2. THE CONTRACTOR SHALL PROVIDE AND ERECT A W12-I102, 48x48(0) LANE WIDTH SIGNS. THESE SHALL BE PLACED AS DIRECTED BY ENGINEER



REVISIONS	
NAME	DATE

ILLINOIS DEPARTMENT OF TRANSPORTATION
STAGE 2 CONSTRUCTION PLAN
IL 96 OVER JIMTOWN BRANCH
FAP 304 SECTION 3B-1
PIKE COUNTY

SCALE: 1"=20'
 DATE: \$DATE

DRAWN BY: GEW
 CHECKED BY: MJS

LEGEND

	PAVEMENT REMOVAL
	BRIDGE DECK REMOVAL
	IMPACT ATTENUATOR, NON-REDIRECTIVE (TEMPORARY) TEST LEVEL 3

The Upchurch Group
 HILLSIDE, IL. (708) 449-2321
 MATTOON, IL. (217) 285-3177

PLOT DATE = Aug-31-2007 11:46:34AM
 FILE NAME = c:\projects\653704\upchurch\final\constrstage2_02.dwg
 PLOT SCALE = 42.3525 / IN.
 USER NAME = laughlin-1