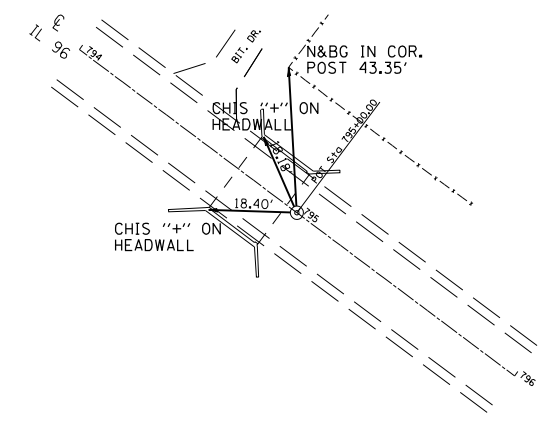
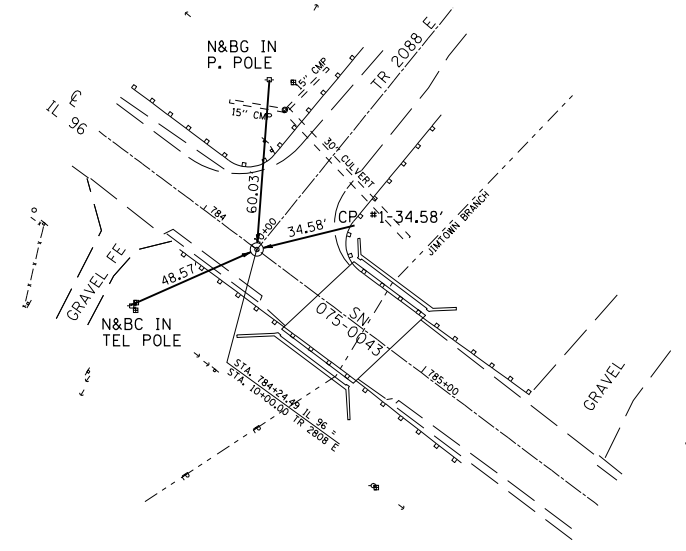


F.A.P. RTE.	SECTION	COUNTY	TOTAL SHEETS	SHEET NO.
304	3B-1	PIKE	51	18
STA.		TO STA.		
FED. ROAD DIST. NO.	ILLINOIS	FED. AID PROJECT		

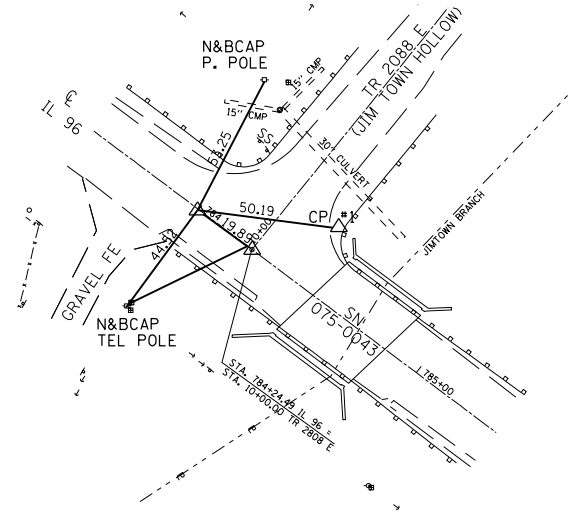
TIES - P.O.T. 795+00.00
SET 5/8" REBAR



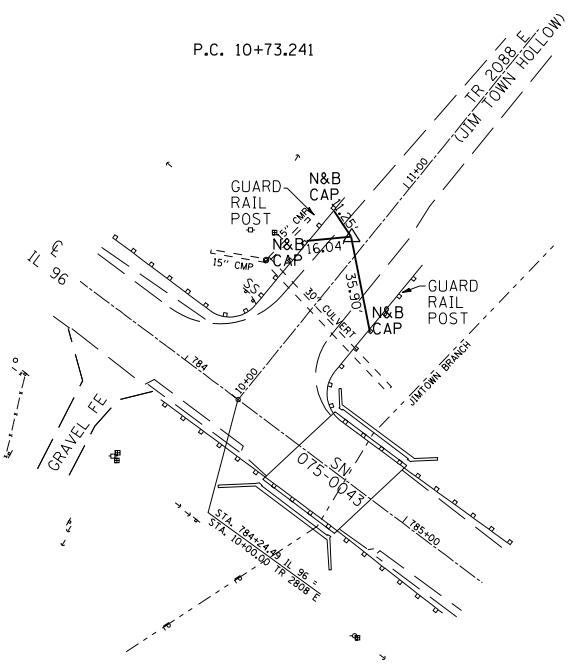
TIES - P.T. 784+19.90
SET 5/8" REBAR



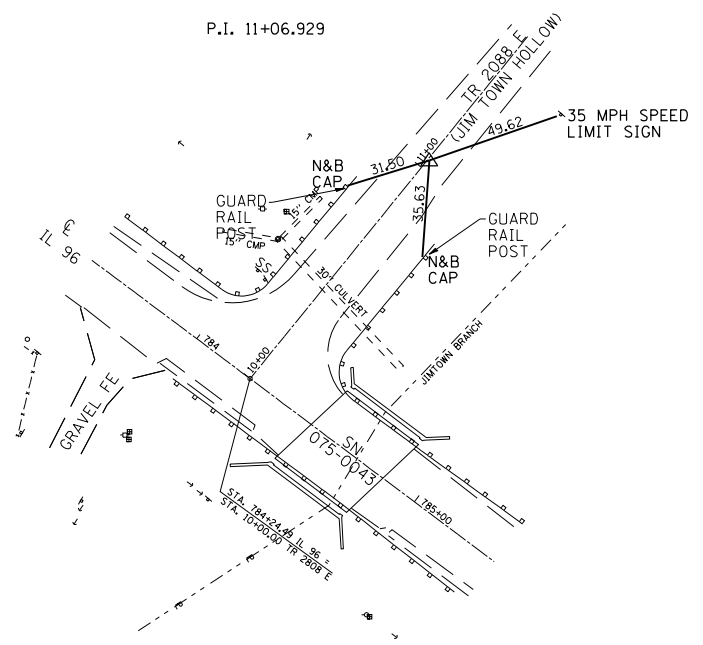
P.O.T. 784+00.00 = 9+96.590



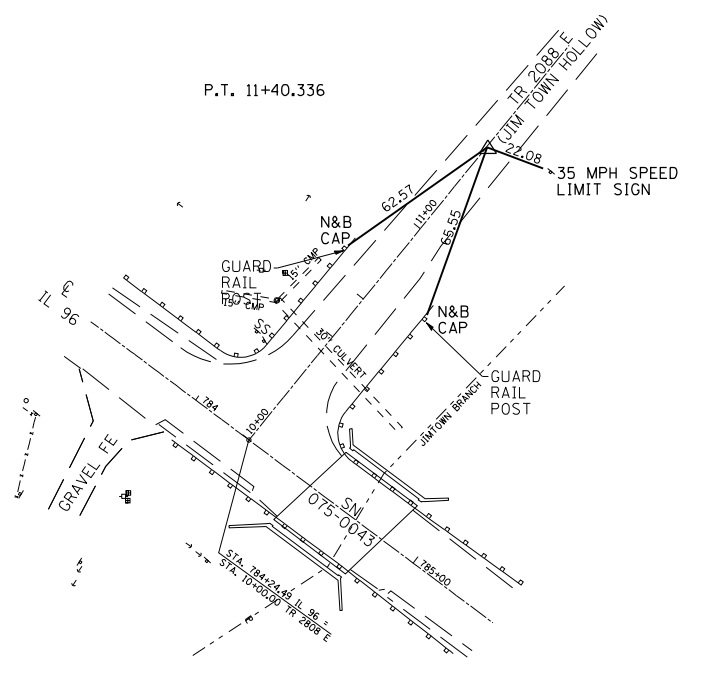
P.C. 10+73.241



P.I. 11+06.929



P.T. 11+40.336



REVISIONS	
NAME	DATE

ILLINOIS DEPARTMENT OF TRANSPORTATION

X-TIES
IL 96 OVER JIMTOWN BRANCH
FAP 304 SECTION 3B-1
PIKE COUNTY

SCALE: _____
 DATE: \$DATE

DRAWN BY _____
 CHECKED BY MJS

The Upchurch Group
 HILLSIDE, IL. (708) 449-2321
 MATTOON, IL. (217) 235-3177

PLOT DATE = Aug-31-2007 11:46:47AM
 FILE NAME = c:\projects\653704\upchurch\final\xties.dwg
 PLOT SCALE = 1/8"=1'-0" / IN.
 USER NAME = laughlin-1