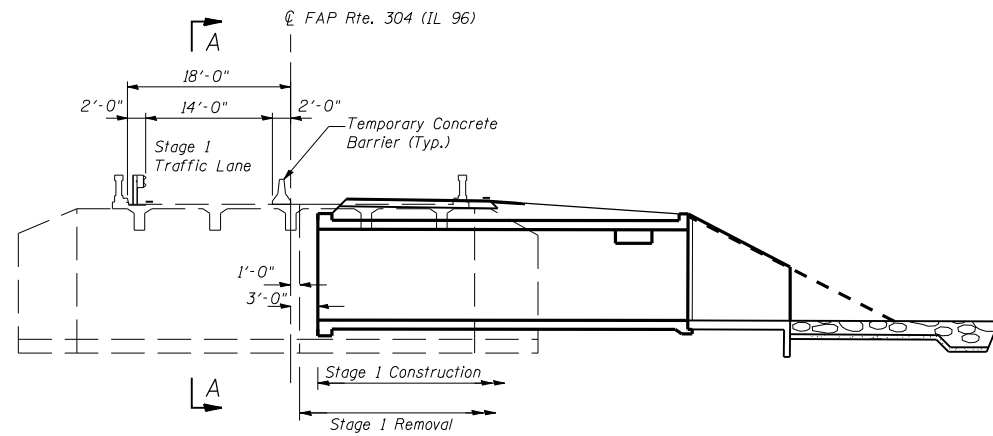
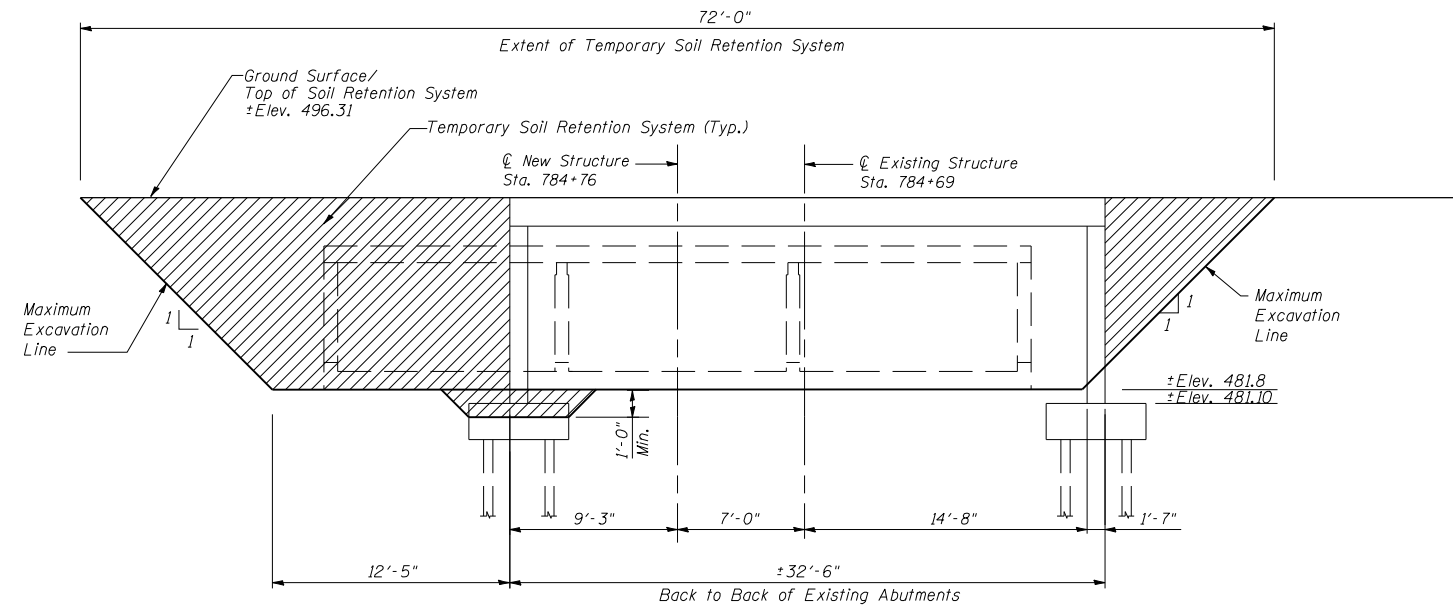


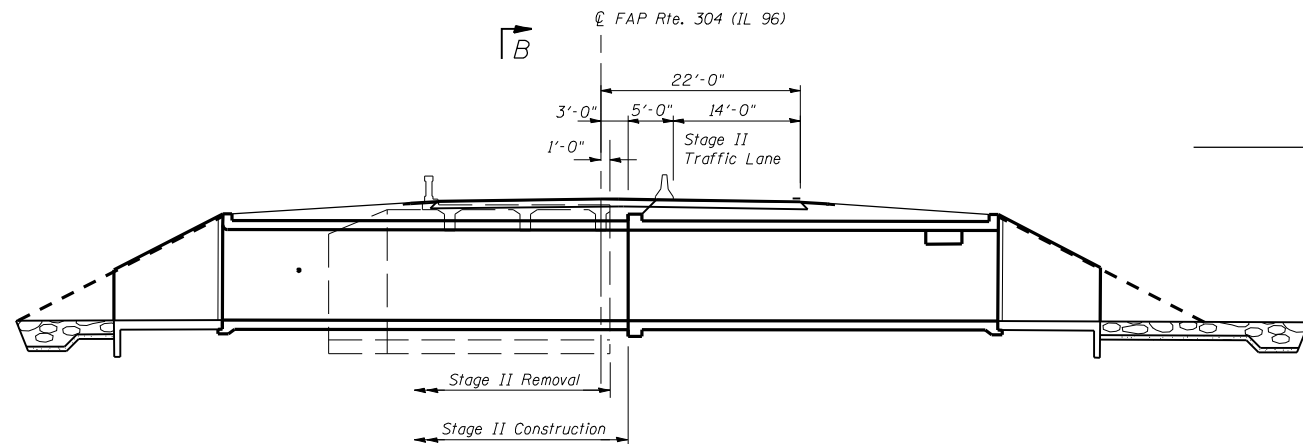
F.A.P. RTE.	SECTION	COUNTY	TOTAL SHEETS	SHEET NO.
304	3B-1	PIKE	51	31
STA.		TO STA.		
FED. ROAD DIST. NO.	ILLINOIS	FED. AID PROJECT		



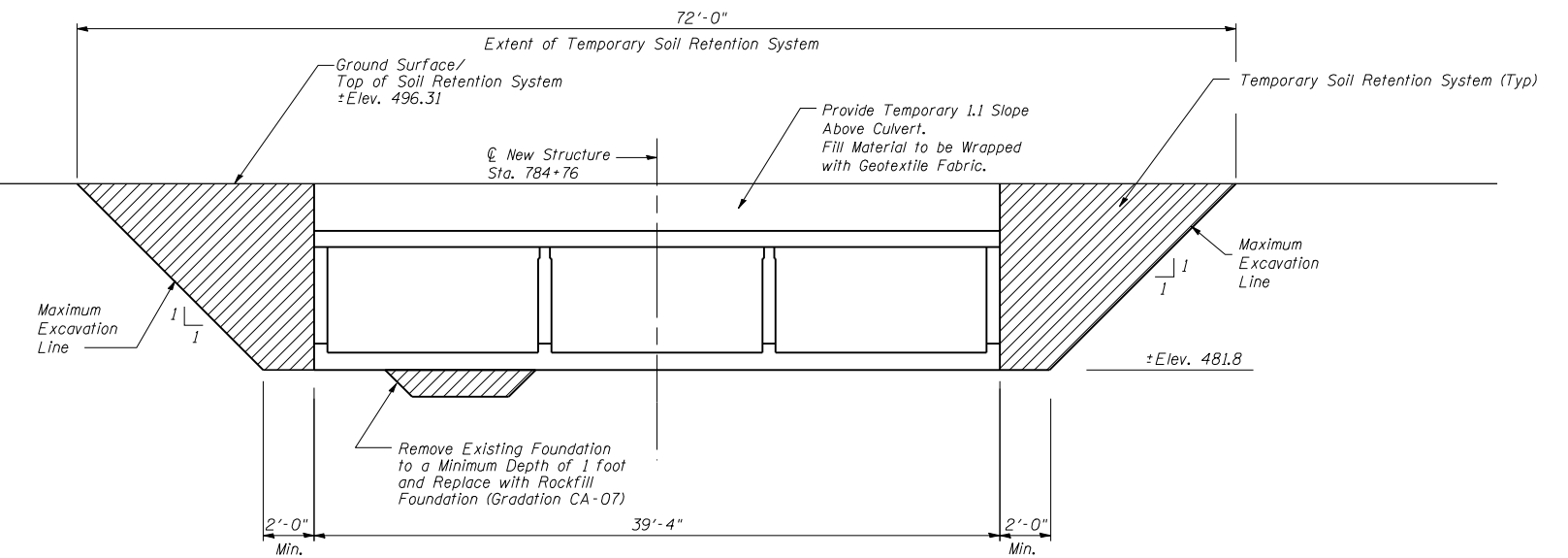
STAGE I CONSTRUCTION
(Horiz. Dim. @ Rt. L's to C/Culvert)



SECTION A-A
(Horiz. Dim. @ Rt. L's to C/Culvert)
Looking Upstream



STAGE II CONSTRUCTION
(Horiz. Dim. @ Rt. L's to C/Culvert)



SECTION B-B
(Horiz. Dim. @ Rt. L's to C/Culvert)
Looking Upstream

Item	Unit	Qty
Temporary Soil Retention System	Sq. Ft.	426

Note:
A Cantilevered Sheet Piling design does not appear feasible and additional members or other retention systems may be necessary. The contractor shall submit a temporary soil retention system design including plan details and calculations for review and acceptance by the Engineer.

REVISIONS	
NAME	DATE

ILLINOIS DEPARTMENT OF TRANSPORTATION
CONSTRUCTION STAGING
IL 96 OVER JIMTOWN BRANCH
FAP 304 SECTION 3B-1
STA. 784+76
PIKE COUNTY STR. 075-2506
SCALE: N.T.S. DRAWN BY LP
DATE: \$DATE CHECKED BY MJS

The Upchurch Group
HILLSIDE, IL. (708) 449-2321
MATTOON, IL. (217) 235-3177

PLOT DATE = Aug-31-2007 11:49:45AM
FILE NAME = c:\projects\653704\upchurch\final\general_plan2.sht
PLOT SCALE = 2:11765' / IN.
USER NAME = laughlin-1