

F.A.P. RTE.	SECTION	COUNTY	TOTAL SHEETS	SHEET NO.
751	101B-2	PIKE	48	1

+1
49

STATE OF ILLINOIS
DEPARTMENT OF TRANSPORTATION
DIVISION OF HIGHWAYS

**PROPOSED
HIGHWAY PLANS**

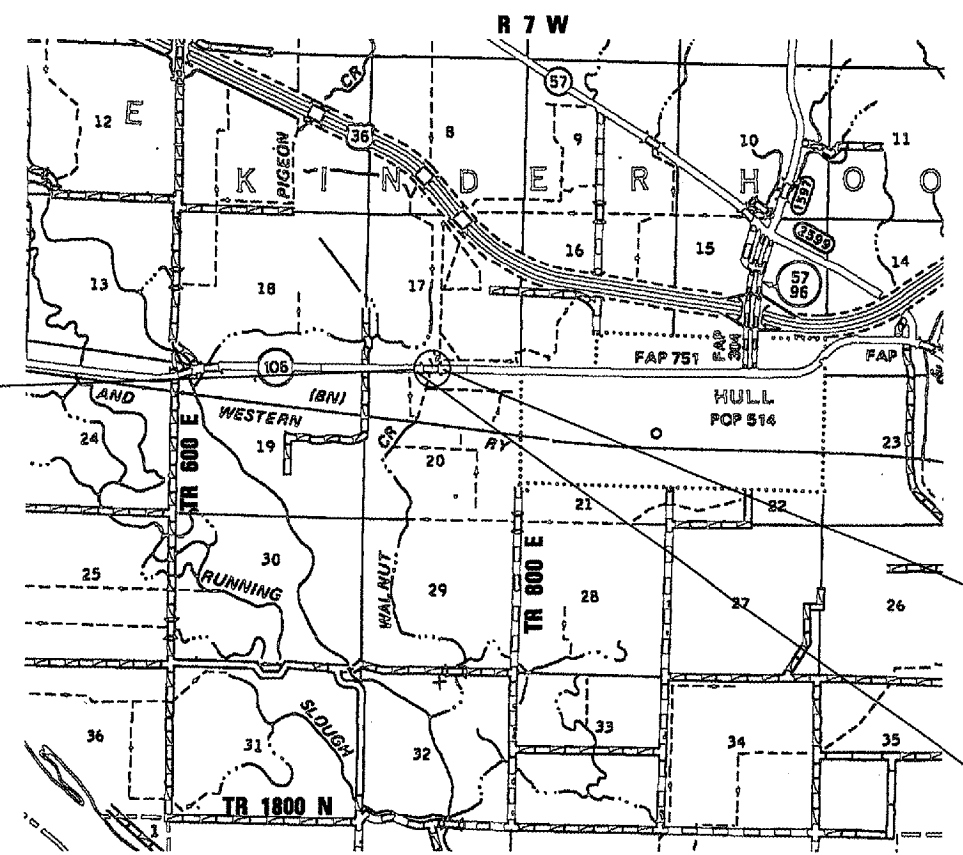
FAP ROUTE 751 (IL 106)
SECTION 101B-2
PROJECT : ACBRF-0751(004)
PIKE COUNTY
BRIDGE REMOVAL AND REPLACEMENT
C-96-507-08

FOR INDEX OF SHEETS, SEE SHEET NO. 2

STANDARDS

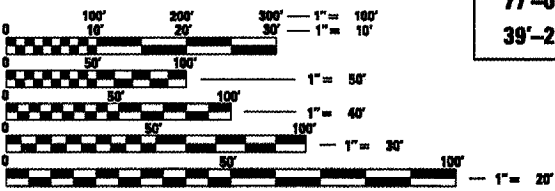
- 000001-04
- 001001-01
- 280001-03
- 420401-05
- 515001-02
- 542401
- 609006-03
- 630001-07
- 630301-04
- 631031-06
- 635006-02
- 666001
- 701201-02
- 701306-01
- 702001-06
- 780001-01
- 781001-02
- BLR 21-6
- 401101

STA 381+00
PROJECT INCLUDES
BRIDGE REMOVAL AND
REPLACEMENT
OF SN 075-0025
EX SINGLE SPAN BRIDGE
48'-0" BK TO BK ABUT
46'-4" OUT TO OUT
WITH PROP
SN 075-0507
SINGLE SPAN
77'-0" BK TO BK ABUT
39'-2" OUT TO OUT



END PROJECT STA 385+00

BEGIN PROJECT STA 377+00



FULL SIZE PLANS HAVE BEEN PREPARED USING STANDARD
ENGINEERING SCALES. REDUCED SIZED PLANS WILL NOT
CONFORM TO STANDARD SCALES. IN MAKING MEASUREMENTS
ON REDUCED PLANS, THE ABOVE SCALES MAY BE USED.

J.U.L.L.E.
JOINT UTILITY LOCATION INFORMATION FOR EXCAVATION
1-800-892-0123

AVERAGE DAILY TRAFFIC: 1050 (2005)
SU: 50
MU: 40

GROSS LENGTH OF PROJECT = 800 FT = 0.152 MILES
NET LENGTH OF PROJECT = 800 FT = 0.152 MILES

STATE OF ILLINOIS
DEPARTMENT OF TRANSPORTATION
DIVISION OF HIGHWAYS

SUBMITTED *August 15, 2007*
Eric E. Harn
DEPUTY DIRECTOR OF HIGHWAYS, REGION ENGINEER

October 12, 2007
Eric E. Harn
ENGINEER OF DESIGN AND ENVIRONMENT

October 13, 2007
Milton R. Sepp
DIRECTOR OF HIGHWAYS, CHIEF ENGINEER

**PRINTED BY THE AUTHORITY
OF THE STATE OF ILLINOIS**

PROJECT ENGINEER: JOHN NEGANGARD (217) 782-6990
SR. SQUAD LEADER: MARK DUST (217) 785-0597

CONTRACT NO. 72928

Rev.