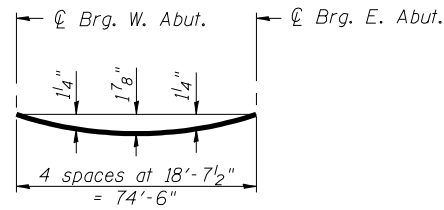


STATE OF ILLINOIS
DEPARTMENT OF TRANSPORTATION

ROUTE NO. F.A.P. 751	SECTION 101B-2	COUNTY PIKE	TOTAL SHEETS 48	SHEET NO. 28	SHEET NO. 3 14 SHEETS
FED. ROAD DIST. NO. 7		ILLINOIS		FED. AID PROJECT	

Contract #72928

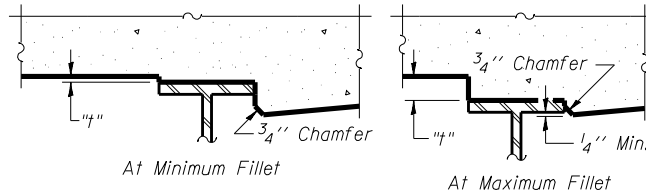


DEAD LOAD DEFLECTION DIAGRAM

(Includes weight of concrete only.)

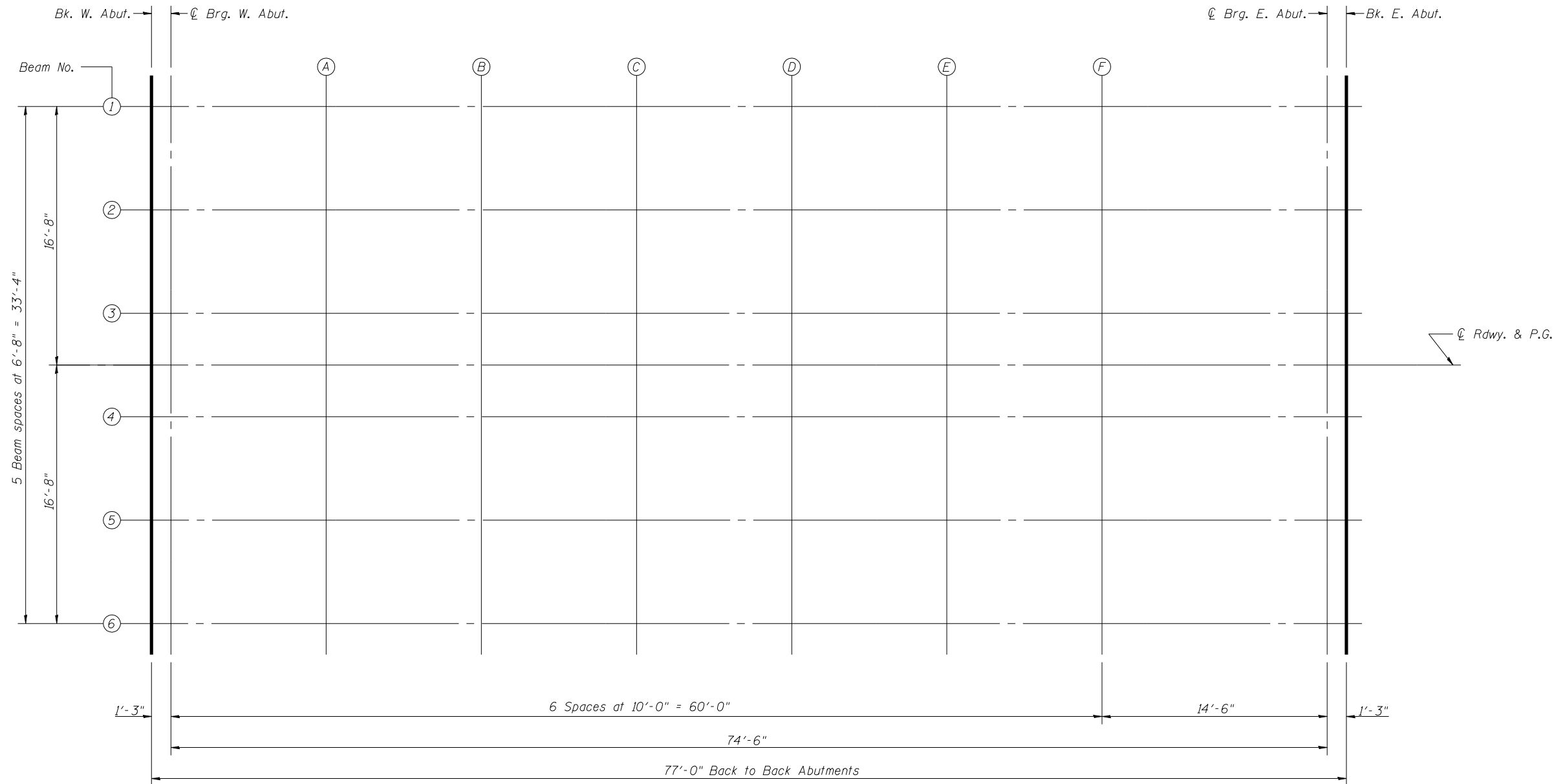
Note:

The above deflections are not to be used in the field if the engineer is working from the grade elevations adjusted for dead load deflections as shown on sheet 4 of 14.



To determine "t": After all structural steel has been erected, elevations of the top flanges of the beams shall be taken at intervals shown below. These elevations subtracted from the "Theoretical Grade Elevations Adjusted for Dead Load Deflection" shown on sheet 4 of 14, minus slab thickness, equals the fillet heights "t" above top flange of beams.

FILLET HEIGHTS



PLAN

DESIGNED	Nicholas R. Barnett
CHECKED	Phillip R. Litchfield
DRAWN	Greg D. Farmer
CHECKED	NRB/PRL

August 30, 2007
 EXAMINED *Thomas J. Damagalli*
 ENGINEER OF BRIDGE DESIGN
 PASSED *Ralph E. Anderson*
 ENGINEER OF BRIDGES AND STRUCTURES

TOP OF SLAB ELEVATIONS
F.A.P. RT. 751 SEC. 101B-2
PIKE COUNTY
STATION 381+00.00
STRUCTURE NO. 075-0507