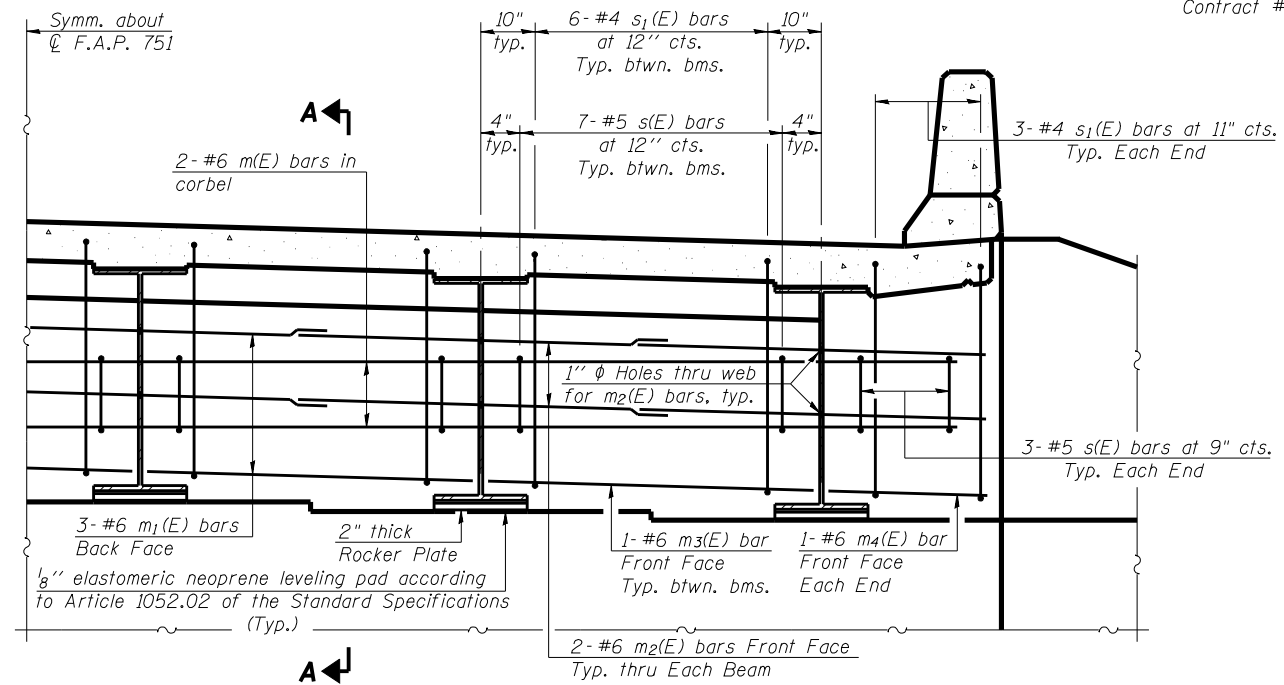


STATE OF ILLINOIS  
DEPARTMENT OF TRANSPORTATION

ROUTE NO. F.A.P. 751	SECTION 10IB-2	COUNTY PIKE	TOTAL SHEETS 48	SHEET NO. 32	SHEET NO. 7 14 SHEETS
FED. ROAD DIST. NO. 7		ILLINOIS	FED. AID PROJECT		

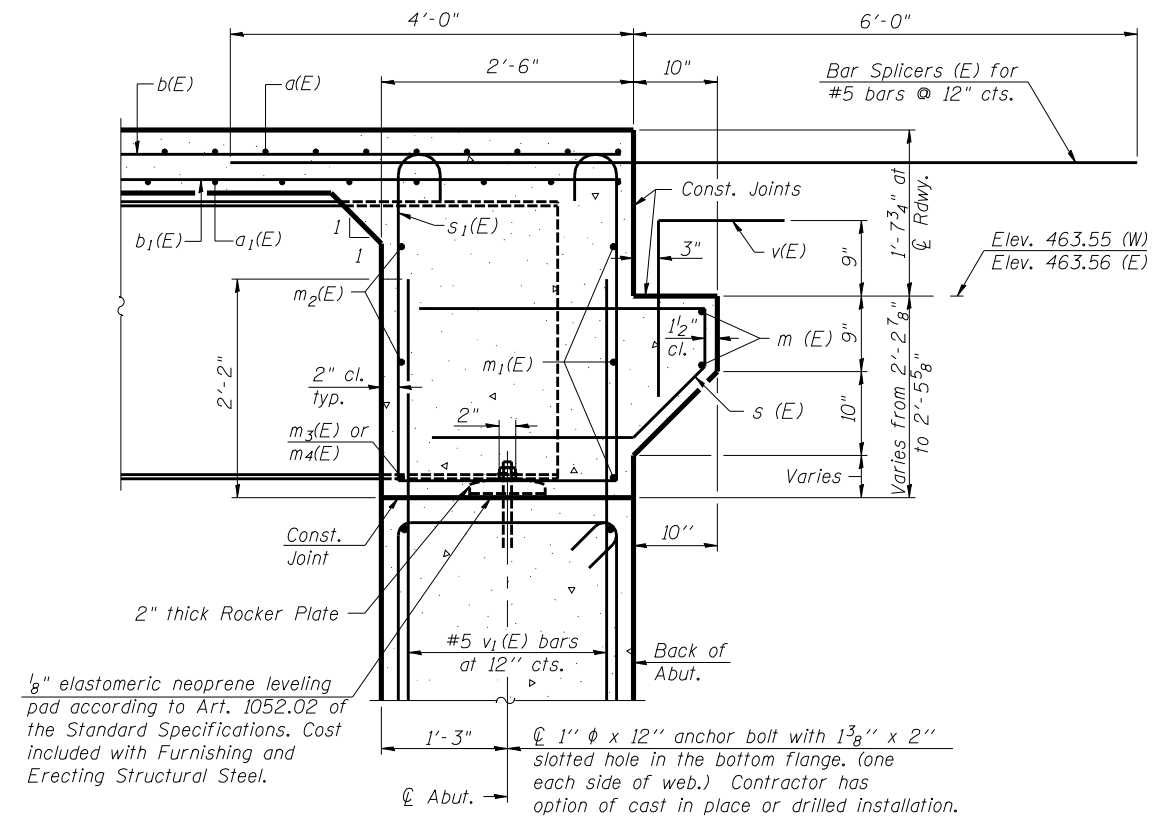
Contract #72928



**DIAPHRAGM ELEVATION AT ABUTMENT**

Notes:  
Reinforcement bars in diaphragm are billed with superstructure on sheet 6 of 14.  
Concrete in diaphragm is included with Concrete Superstructure on sheet 6 of 14.  
For details of bars s(E) & s1(E) see sheet 6 of 14.  
The s(E) and s1(E) bars shall be placed parallel to the beams.

**MIN. BAR LAP**  
#6 bar = 2'-9"



**SECTION A-A**

DESIGNED	Nicholas R. Barnett
CHECKED	Phillip R. Litchfield
DRAWN	Greg D. Farmer
CHECKED	NRB/PRL

EXAMINED	Thomas J. Damagalli	August 30, 2007
PASSED	Ralph E. Anderson	ENGINEER OF BRIDGES AND STRUCTURES

**DIAPHRAGM DETAILS**  
**F.A.P. RT. 751 SEC. 10IB-2**  
**PIKE COUNTY**  
**STATION 381+00.00**  
**STRUCTURE NO. 075-0507**