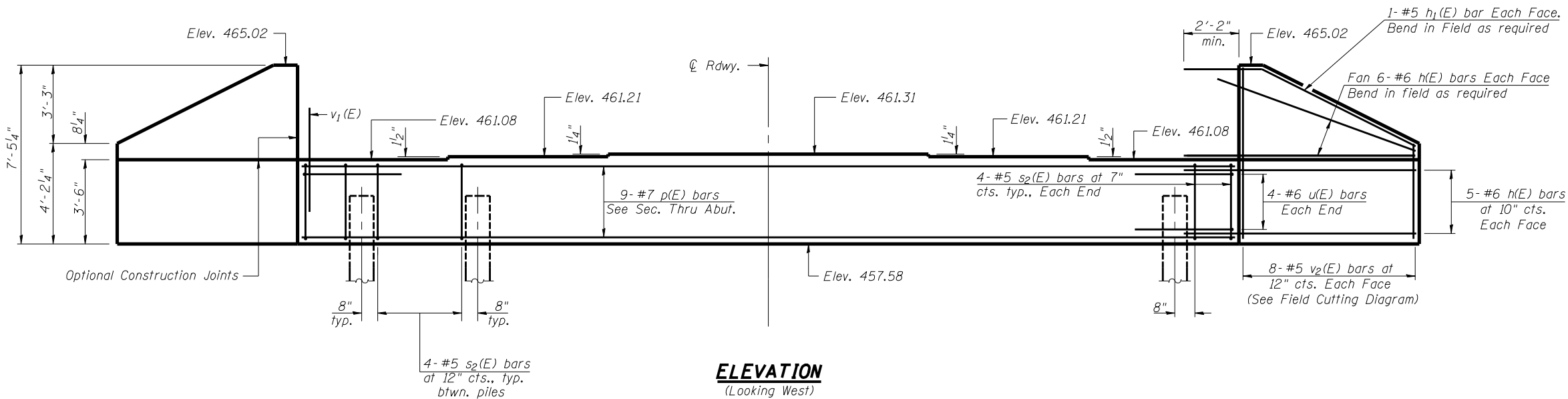


Notes: Four steps monolithically with cap.

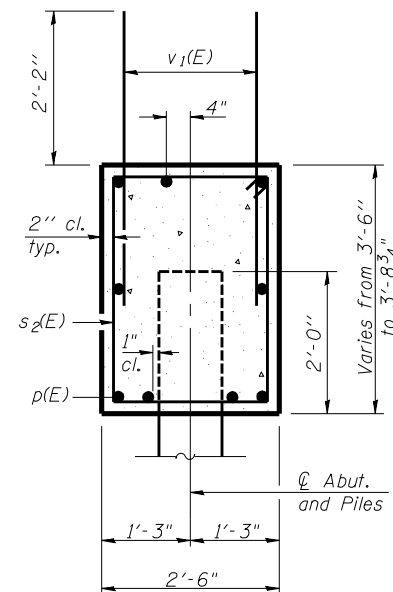
STATE OF ILLINOIS
DEPARTMENT OF TRANSPORTATION

ROUTE NO. F.A.P. 751	SECTION 101B-2	COUNTY PIKE	TOTAL SHEETS 48	SHEET NO. 34	SHEET NO. 9 14 SHEETS
FED. ROAD DIST. NO. 7		ILLINOIS	FED. AID PROJECT		

Contract #72928



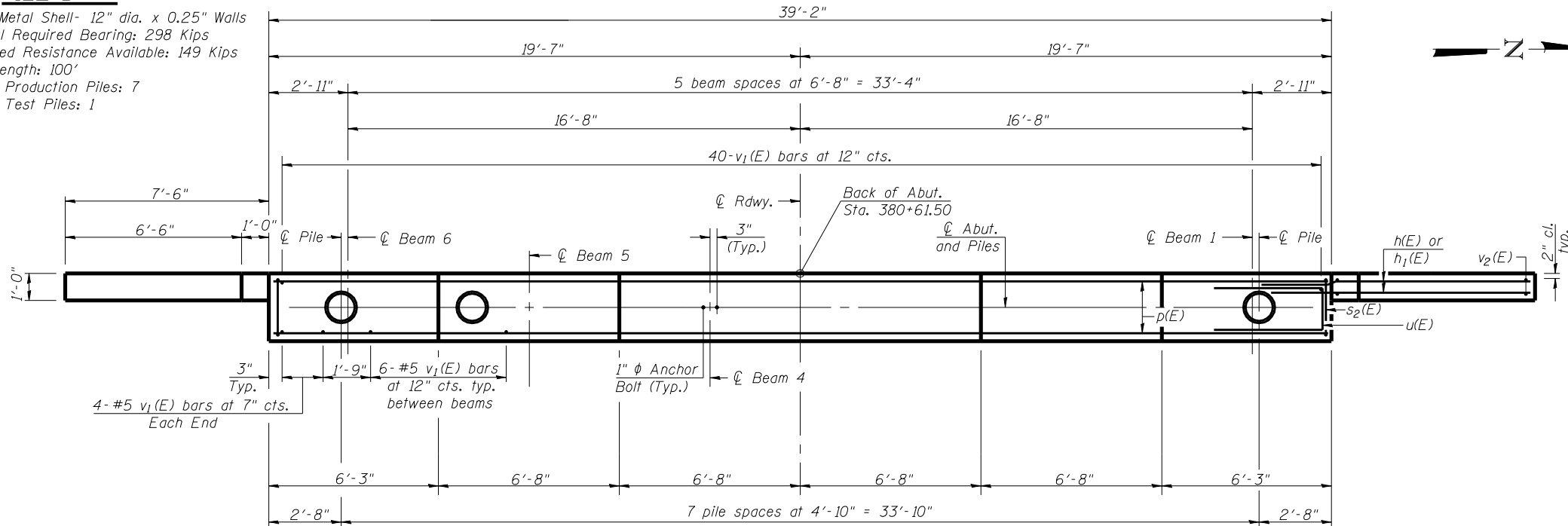
ELEVATION
(Looking West)



SEC. THRU ABUT.

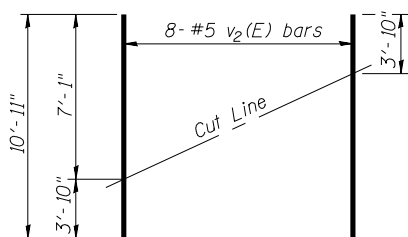
PILE DATA

Type: Metal Shell- 12" dia. x 0.25" Walls
Nominal Required Bearing: 298 Kips
Factored Resistance Available: 149 Kips
Est. Length: 100'
No. of Production Piles: 7
No. of Test Piles: 1



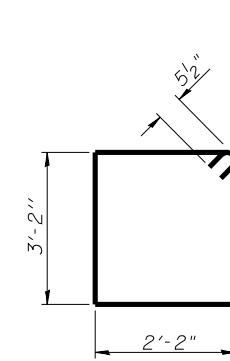
PLAN

Note: If h(E) bars interfere with Metal Shell Piles, cut h(E) bars to fit and maintain min. 2'-2" embedment.

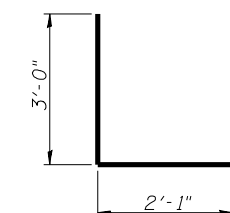


FIELD CUTTING DIAGRAM

Order v2(E) full length. Cut as shown and use remainder of bars in opposite face.



BAR s2(E)



BAR u(E)

BILL OF MATERIAL

Bar	No.	Size	Length	Shape
h(E)	44	#6	9'-8"	—
h1(E)	4	#5	10'-3"	—
p(E)	9	#7	38'-10"	—
s2(E)	36	#5	11'-7"	□
u(E)	8	#6	8'-1"	U
v1(E)	78	#5	4'-4"	—
v2(E)	16	#5	10'-11"	—
Concrete Structures		Cu. Yd.	16.5	
Reinforcement Bars, Epoxy Coated		Pound	2460	
Structure Excavation		Cu. Yd.	86	
Anchor Bolts, 1"		Each	12	
Furnishing Metal Shell Piles, 12" φ X 0.25"		Foot	700	
Driving Piles		Foot	700	
Test Pile Metal Shells		Each	1	

WEST ABUTMENT
F.A.P. 751 SEC. 101B-2
PIKE COUNTY
STATION 381+00.00
STRUCTURE NO. 075-0507

DESIGNED	Nicholas R. Barnett
CHECKED	Phillip R. Litchfield
DRAWN	Greg D. Farmer
CHECKED	NRB/PRL

EXAMINED	Thomas J. Damagalki	August 30, 2007
PASSED	Ralph E. Anderson	