

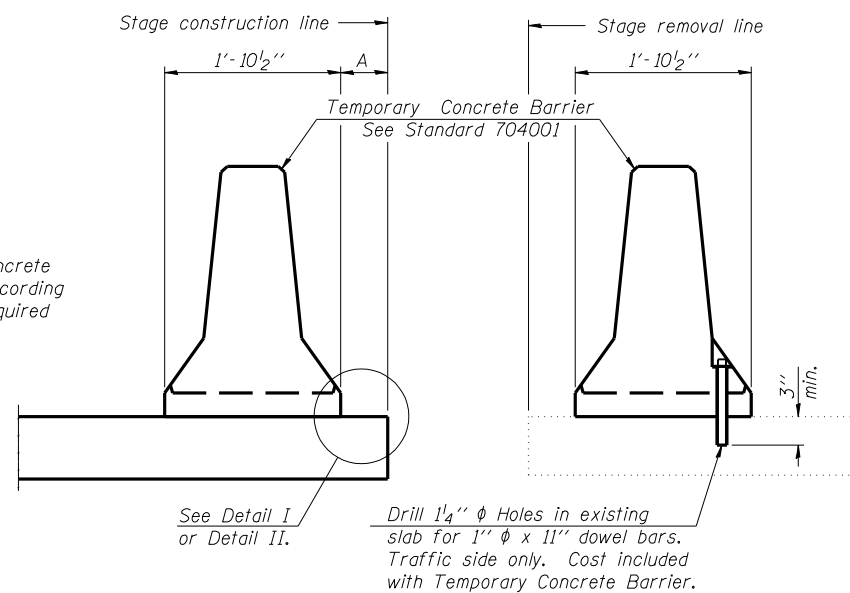
ROUTE NO.	SEC	COUNTY	TOTAL SHEETS	SHEET NO.
FAP 753	*	SANGAMON	57	31
FED. ROAD DIST. NO. 7	ILLINOIS	PROJECT		

SHEET NO. 5
10 SHEETS

* 139 (B-1)

CONTRACT NO. 72982

When "A" is 3'-6" or less, the temporary concrete barrier shall be anchored to the new slab according to Detail I or Detail II. No anchorage is required when "A" is greater than 3'-6".



NEW SLAB

EXISTING SLAB

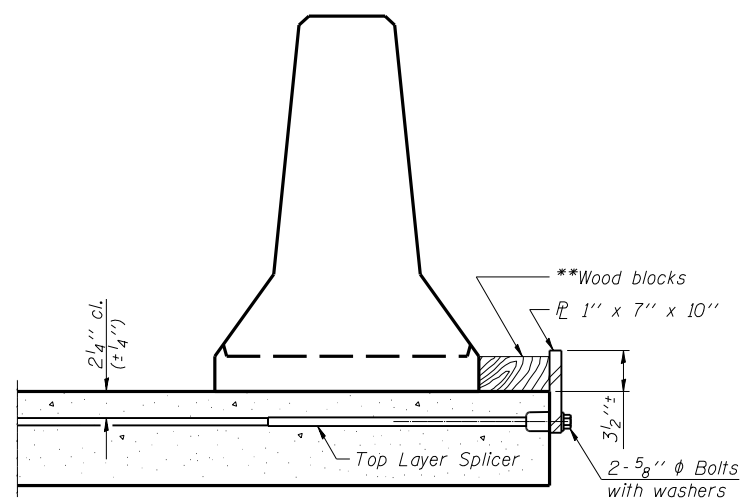
SECTIONS THRU SLAB

NOTES

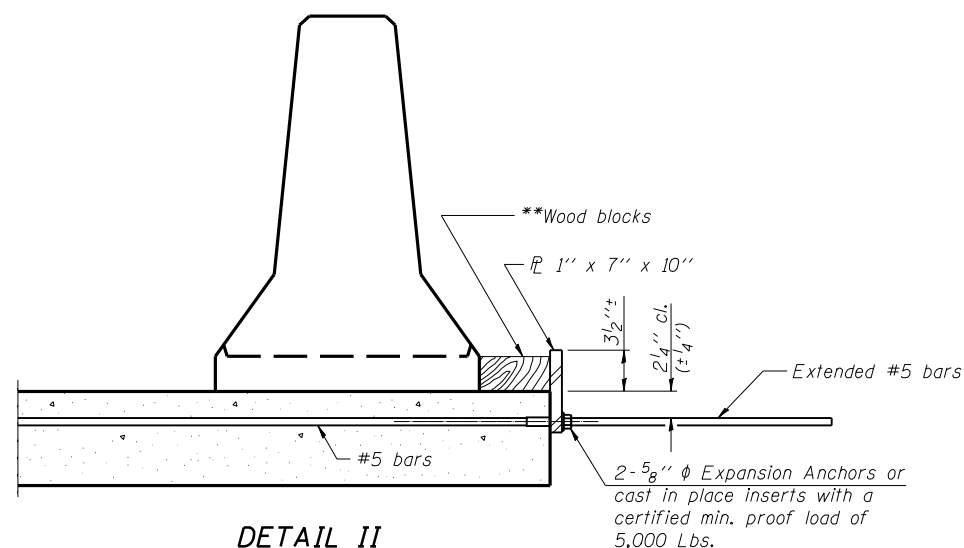
Detail I - With Bar Splicer or Couplers:
Connect one (1) 1"x7"x10" steel PL to the top layer of couplers with 2-5/8" phi bolts screwed to coupler at approximate C of each barrier panel.

Detail II - With Extended Reinforcement Bars:
Connect one (1) 1"x7"x10" steel PL to the concrete slab with 2-5/8" phi Expansion Anchors or cast in place inserts spaced between the top layer of reinforcement at approximate C of each barrier panel.

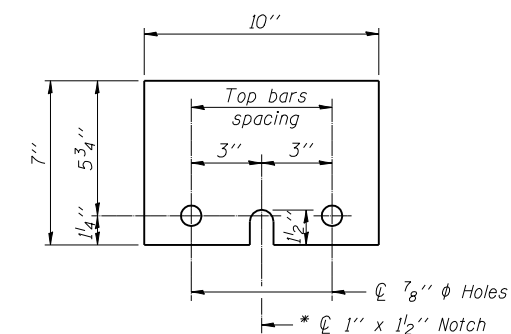
Cost of anchorage is included with Temporary Concrete Barrier. The 1" x 7" x 10" plate shall not be removed until stage II construction forms and all reinforcement bars are in place and the concrete is ready to be placed.



DETAIL I



DETAIL II



STEEL RETAINER PL 1" x 7" x 10"

* Required only with Detail II

** Wood blocks may be omitted when required to provide minimum stage traffic lane width. When the wood blocks are omitted, the concrete barrier shall be in direct contact with the steel retainer plate.

DESIGNED	BAN
CHECKED	JOH
DRAWN	TC
CHECKED	BAN

R-27

11-1-06

2447-3b005

**TEMPORARY CONCRETE BARRIER
FOR STAGE CONSTRUCTION
F.A.P. 753 (IL. 104)
OVER PANTHER CREEK
SECTION 139(B-1)
SANGAMON COUNTY
STA. 408+66.00
STR. NO. 084-2508**

HUTCHISON ENGINEERING, INC.
JACKSONVILLE, ILLINOIS
Rev: _____ Date: _____