

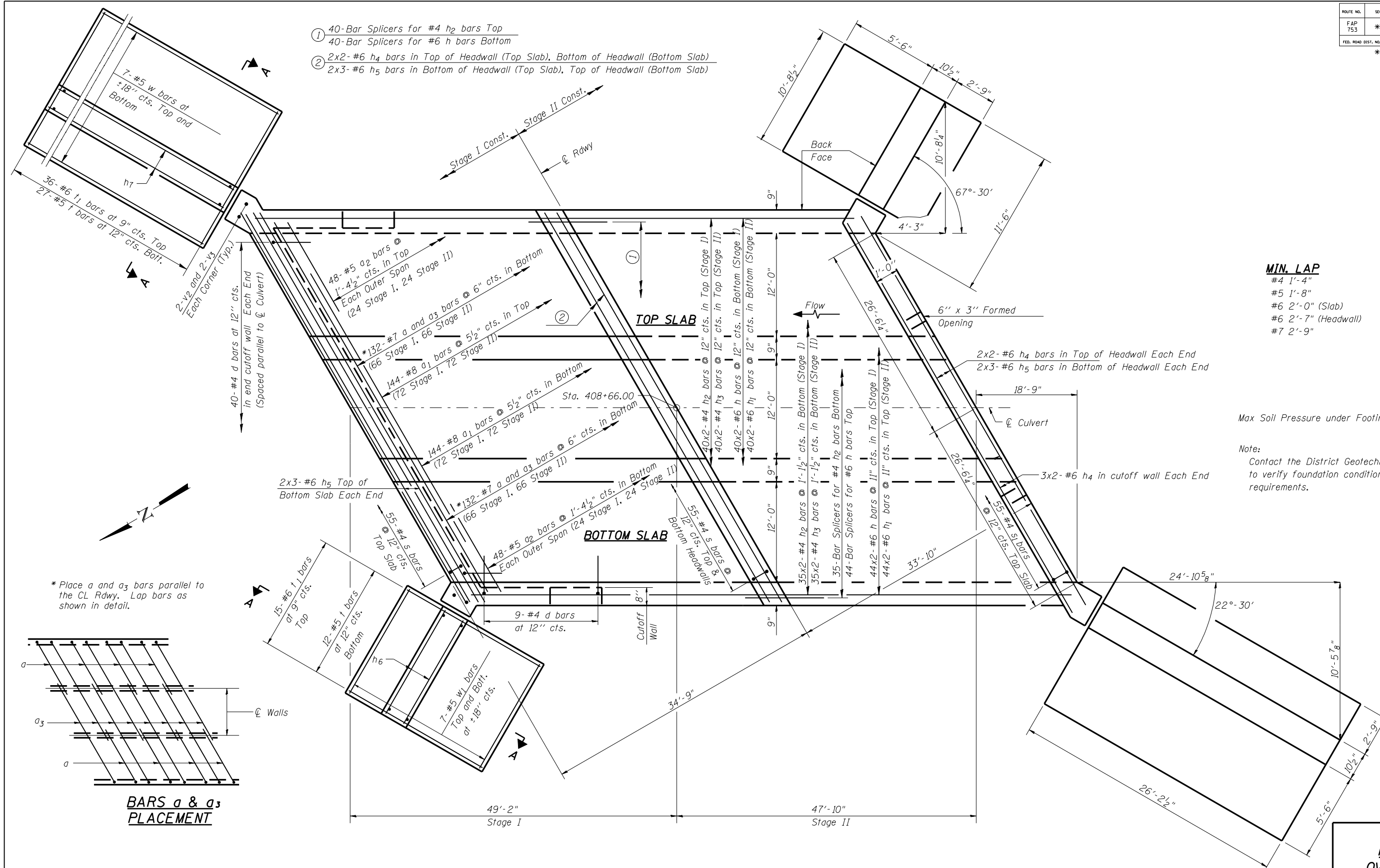
ROUTE NO.	SEC	COUNTY	TOTAL SHEETS	SHEET NO.
FAP 753	*	SANGAMON	57	32
FED. ROAD DIST. NO. 7	ILLINOIS	PROJECT		

SHEET NO. 6  
10 SHEETS

\* 139 (B-1)

CONTRACT NO. 72982

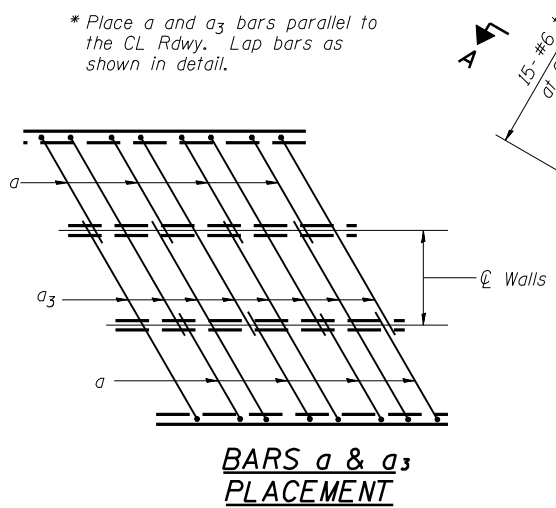
- ① 40-Bar Splicers for #4 h<sub>2</sub> bars Top  
40-Bar Splicers for #6 h bars Bottom
- ② 2x2-#6 h<sub>4</sub> bars in Top of Headwall (Top Slab), Bottom of Headwall (Bottom Slab)  
2x3-#6 h<sub>5</sub> bars in Bottom of Headwall (Top Slab), Top of Headwall (Bottom Slab)



- MIN. LAP**
- #4 1'-4"
  - #5 1'-8"
  - #6 2'-0" (Slab)
  - #6 2'-7" (Headwall)
  - #7 2'-9"

Max Soil Pressure under Footing = 2,360 psf

Note:  
Contact the District Geotechnical Engineer to verify foundation conditions meet plan requirements.



DESIGNED	BAN
CHECKED	JOH
DRAWN	TC/CET
CHECKED	BAN

**PLAN**

Notes:  
For Section A-A, see Sht. 7 of 10.  
Bars indicated thus 1 x 2 - #4 etc. indicates 1 line of bars with 2 lengths per line.

**CULVERT DETAILS**  
**F.A.P. 753 (IL. 104)**  
**OVER PANTHER CREEK**  
**SECTION 139(B-1)**  
**SANGAMON COUNTY**  
**STA. 408+66.00**  
**STR. NO. 084-2508**

HUTCHISON ENGINEERING, INC.  
 JACKSONVILLE, ILLINOIS

Rev: \_\_\_\_\_ Date: \_\_\_\_\_