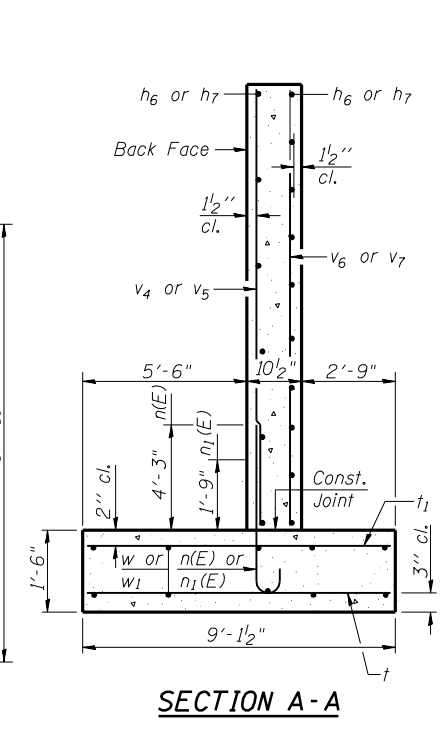


LONGITUDINAL SECTION
Looking Southeast

*Dimensions are at Right Angles to ϕ Roadway



SECTION A-A



CROSS SECTION AT RAIL
(See Std. 630101)

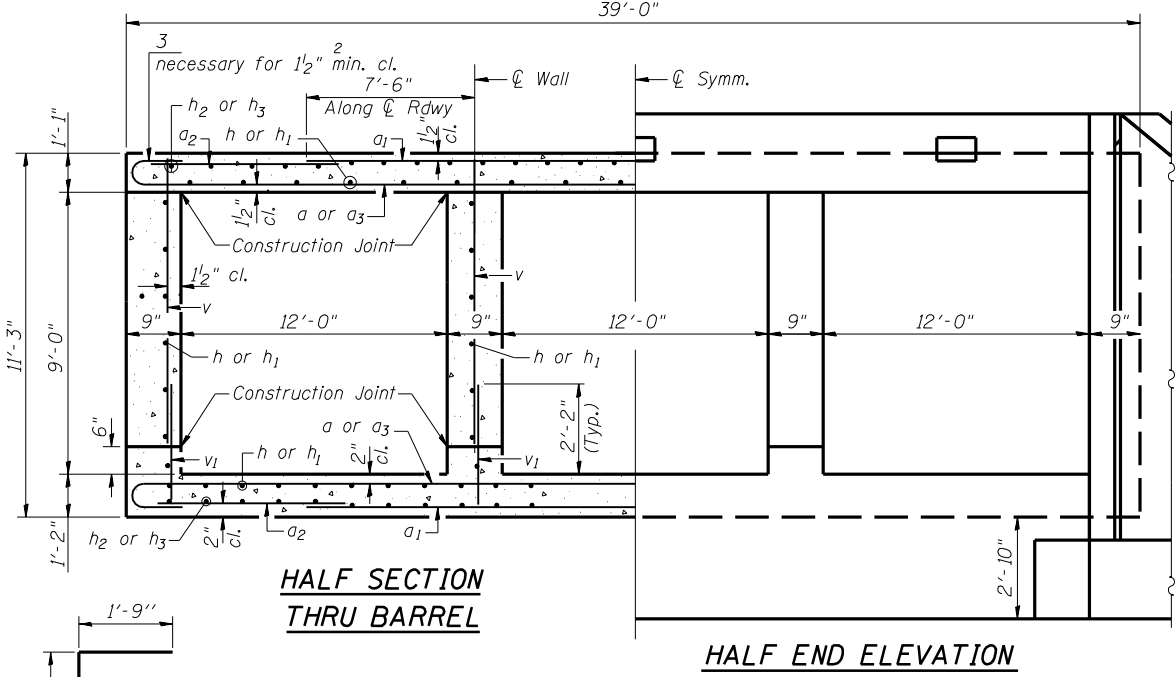
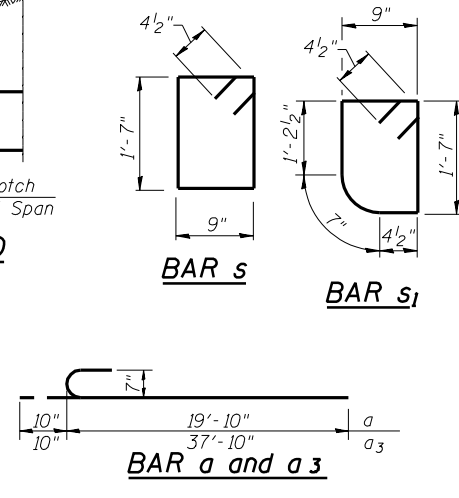
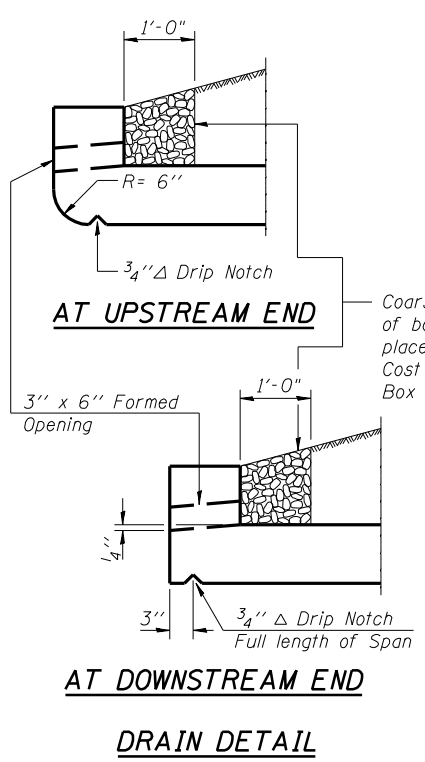
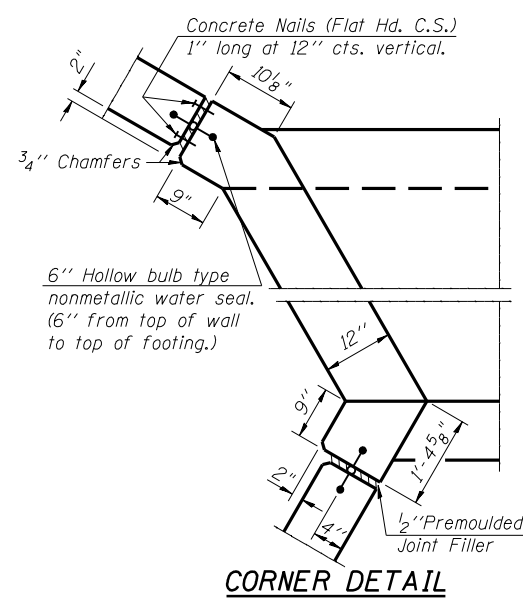
** Holes shall be cast into slab.

BILL OF MATERIAL

Bar	No.	Size	Length	Shape
a	264	#7	20'-8"	C
a1	288	#8	33'-0"	—
a2	192	#5	12'-8"	—
a3	264	#7	38'-8"	C
d	116	#4	5'-6"	L
h	240	#6	25'-6"	—
h1	240	#6	24'-10"	—
h2	150	#4	25'-2"	—
h3	150	#4	24'-6"	—
h4	28	#6	28'-8"	—
h5	36	#6	20'-0"	—
h6	44	#4	10'-5"	—
h7	44	#4	25'-11"	—
n(E)	98	#6	6'-1"	U
n1(E)	100	#5	3'-6"	U
s	165	#4	5'-5"	□
s1	55	#4	5'-3"	□
t	78	#5	8'-10"	—
t1	102	#6	8'-10"	—
v	592	#6	9'-5"	—
v1	592	#6	3'-2"	—
v2	8	#6	10'-1"	—
v3	8	#6	6'-0"	—
v4	15	#5	21'-3"	—
v5	35	#5	21'-3"	—
v6	4	#4	21'-3"	—
v7	7	#4	21'-3"	—
w	28	#5	25'-11"	—
w1	28	#5	10'-5"	—
Concrete Box Culverts		Cu. Yd.	492.6	
Reinforcement Bars, Epoxy Coated		Pound	1,260	
Reinforcement Bars		Pound	103,400	
Bar Splicers		Each	195	

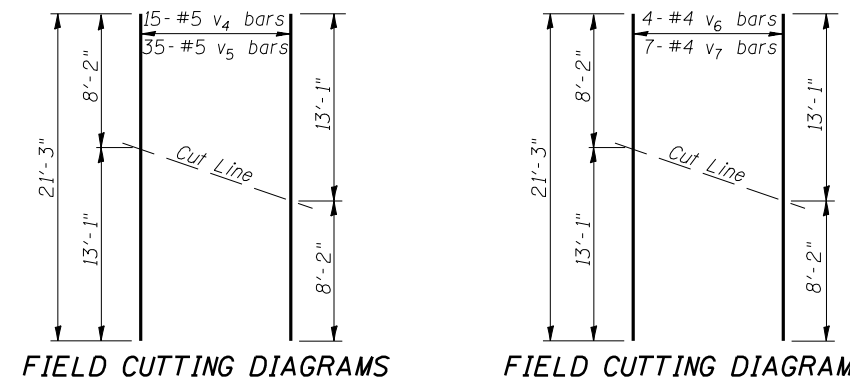
REINFORCEMENT BACK FACE

Long Wing 35-#5 n1(E) bars at 9" cts. Alternate with 35-#6 n(E) bars at 9" cts.
Short Wing 15-#5 n1(E) bars at 9" cts. Alternate with 14-#6 n(E) bars at 9" cts.



HALF SECTION THRU BARREL

HALF END ELEVATION



FIELD CUTTING DIAGRAMS

FIELD CUTTING DIAGRAMS

Order v4 & v5 bars full length, cut to fit skew according to Field Cutting Diagrams shown above. Use remainder of bars in opposite wingwall.

Order v6 & v7 bars full length, cut to fit skew according to Field Cutting Diagrams shown above. Use remainder of bars in opposite end of wingwall.

DESIGNED	BAN
CHECKED	JOH
DRAWN	TC/CET
CHECKED	BAN

CULVERT DETAILS
F.A.P. 753 (IL. 104)
OVER PANTHER CREEK
SECTION 139(B-1)
SANGAMON COUNTY
STA. 408+66.00
STR. NO. 084-2508

HUTCHISON ENGINEERING, INC.
JACKSONVILLE, ILLINOIS

Rev: _____ Date: _____