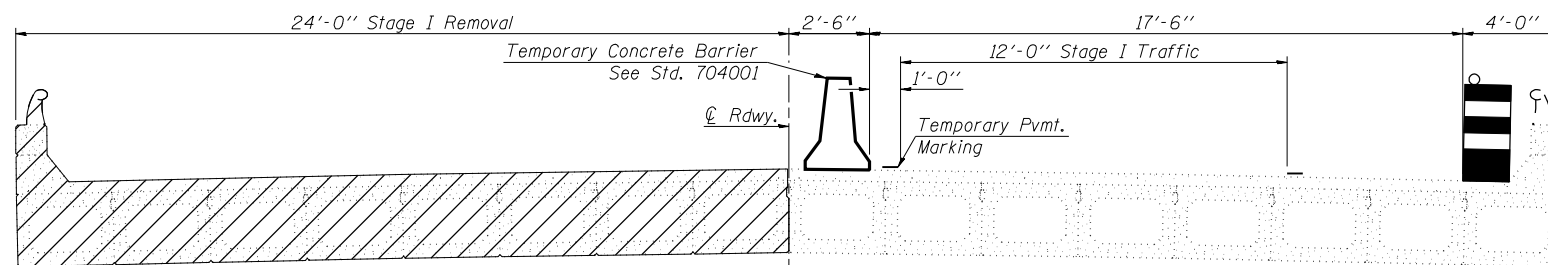
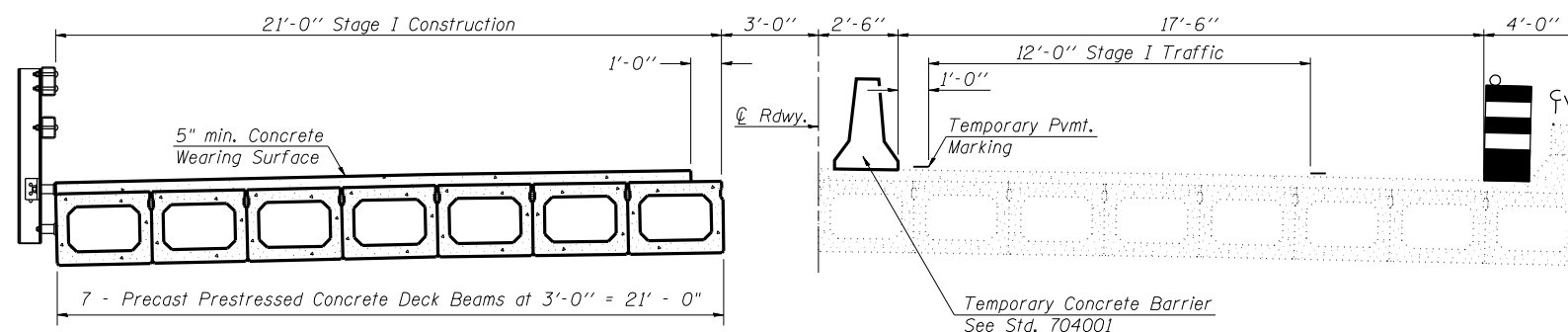


ROUTE NO.	SECTION	COUNTY	SHEETS	SHEET NO.
F.A.P. 753	142 BR-4	SANGAMON	24	15
FED. ROAD DIST. NO. 7		ILLINOIS	FED. AID PROJECT	

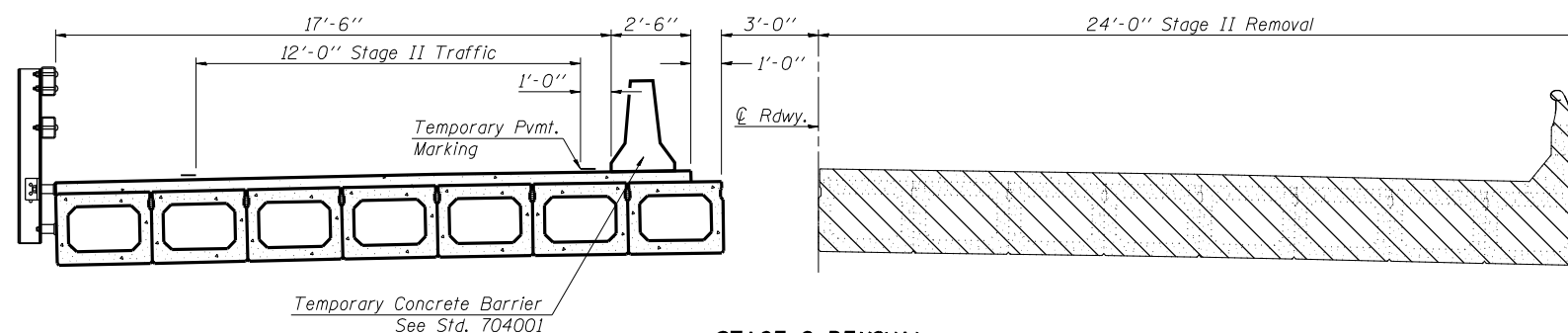


Notes:
 Temporary shoring system is required for the PPC Deck Beams carrying stage I Traffic, see Temporary Shoring plans for more information.
 Traffic Control Device is required to avoid wheel load contact over the south fascia beam. Device can be temporarily moved to permit wide vehicles to cross subject to approval by the Engineer. In no case should wheel loads be permitted over the beam.
 Hatched area indicates "Removal of Existing Superstructures".
 For details of Temporary Concrete Barrier, see sheet 3 of 11.
 For quantity of Temporary Concrete Barrier, See Roadway Plans.
 Reconnect and tighten remaining existing transverse tie rods after Stage I removal.

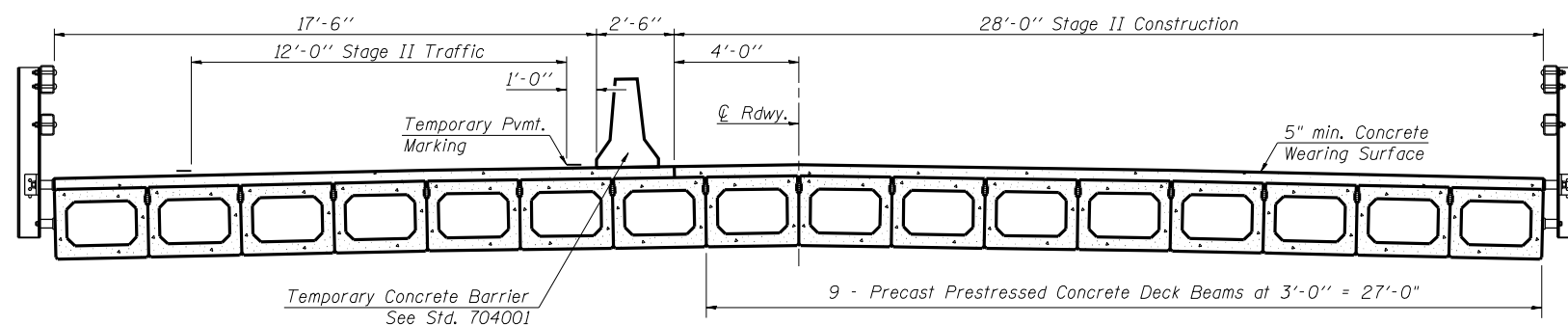
STAGE I REMOVAL
(Looking East)



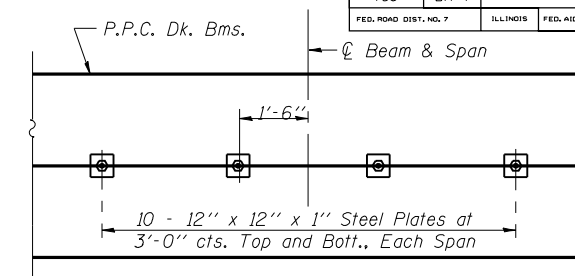
STAGE I CONSTRUCTION
(Looking East)



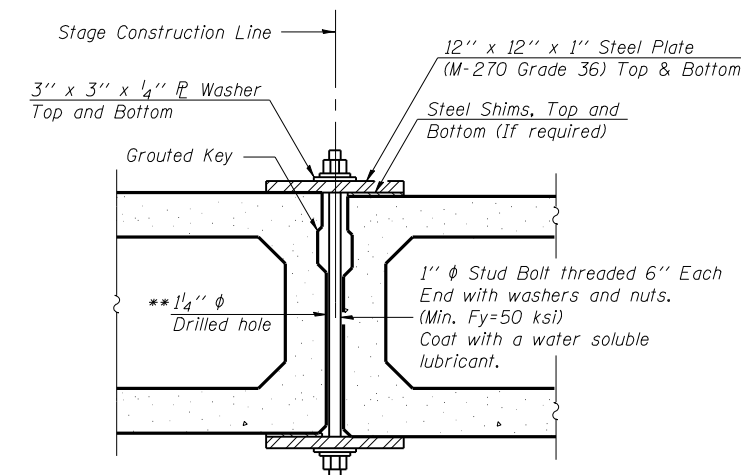
STAGE II REMOVAL
(Looking East)



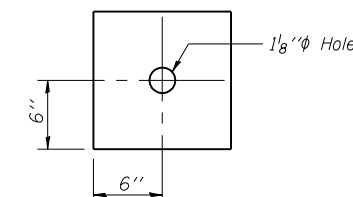
STAGE II CONSTRUCTION
(Looking East)



PLAN



SECTION



CLAMPING PLATE

SHEAR KEY CLAMPING DETAILS AT STAGE CONST. JT.

Cost included with Precast Prestressed Concrete Deck Beams.
 See Stage Construction Details for traffic lanes.

** As an alternate to the drilled holes, the Contractor may request the Fabricator to cast 2" diameter semi-circular recesses in the sides of each beam adjacent to the stage construction line. These recesses should align to form a hole at the appropriate locations for the clamping device bolts. If the Contractor elects to use this alternate, the details shall be identified on the shop drawings.

K+ K-Plus Engineering, Ltd.
 753 WINDSOR ROAD
 CHARLESTON, IL 61920
 (217) 348-1900
 WWW.K-PLUSENGINEERING.LTD.COM
 ILLINOIS DEPARTMENT OF PROFESSIONAL REGULATION REGISTRATION #184-003685

THIS DOCUMENT IS THE PROPERTY OF K-PLUS ENGINEERING, LTD. AND NO PART HEREIN SHALL BE USED EXCEPT FOR THIS SPECIFIC PROJECT WITHOUT THE WRITTEN CONSENT OF K-PLUS ENGINEERING, LTD.

REVISIONS	NAME	DATE

ILLINOIS DEPARTMENT OF TRANSPORTATION

STAGE CONSTRUCTION DETAILS

IL RTE. 104 OVER HORSE CREEK
 FAP 753 - SECTION 142BR-4
 SANGAMON COUNTY
 STA 989+90.00
 SN 084-0176

DATE: 08-01-07

DRAWN BY: ADG
 CHECKED BY: DF