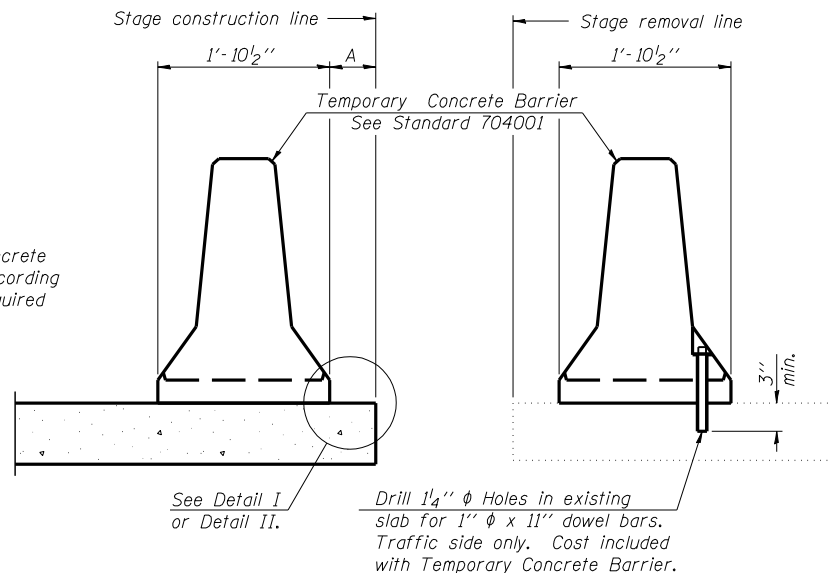


ROUTE NO.	SECTION	COUNTY	SHEETS	SHEET NO.
F.A.P. 753	142 BR-4	SANGAMON	24	16
FED. ROAD DIST. NO. 7	ILLINOIS		FED. AID PROJECT	

When "A" is 3'-6" or less, the temporary concrete barrier shall be anchored to the new slab according to Detail I or Detail II. No anchorage is required when "A" is greater than 3'-6".



NEW SLAB

EXISTING SLAB

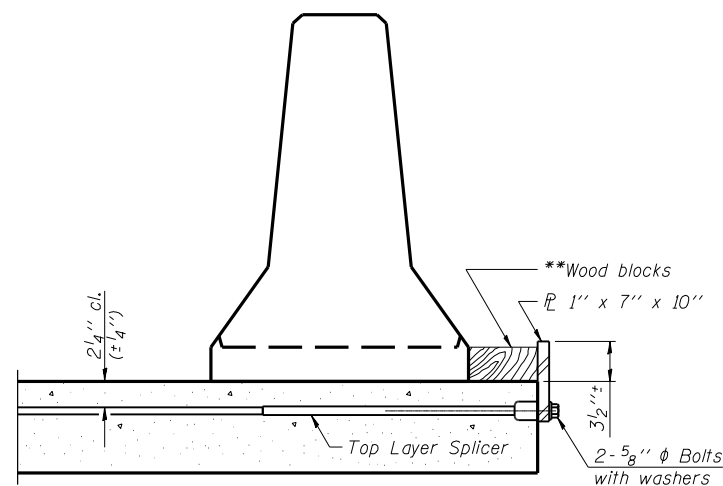
SECTIONS THRU SLAB

NOTES

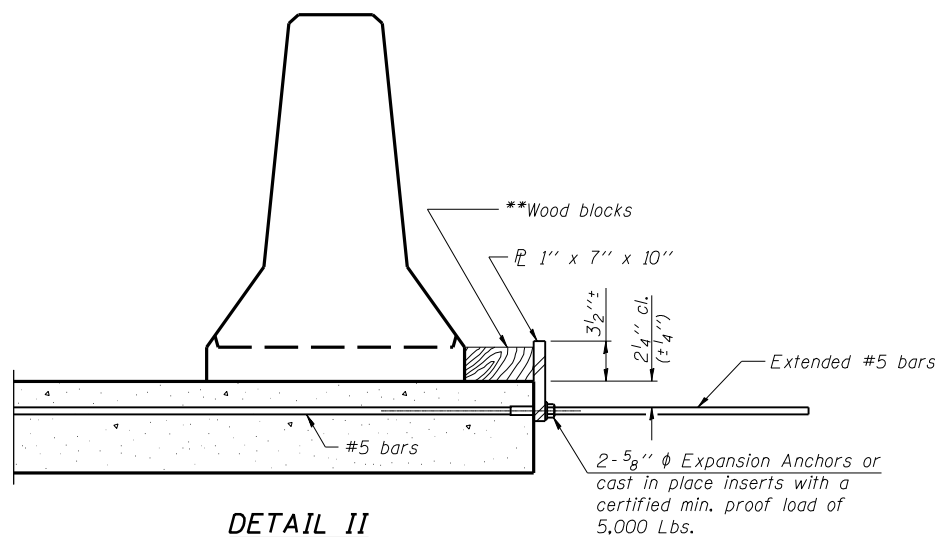
Detail I - With Bar Splicer or Couplers:
Connect one (1) 1"x7"x10" steel PL to the top layer of couplers with 2-5/8" φ bolts screwed to coupler at approximate C of each barrier panel.

Detail II - With Extended Reinforcement Bars:
Connect one (1) 1"x7"x10" steel PL to the concrete slab with 2-5/8" φ Expansion Anchors or cast in place inserts spaced between the top layer of reinforcement at approximate C of each barrier panel.

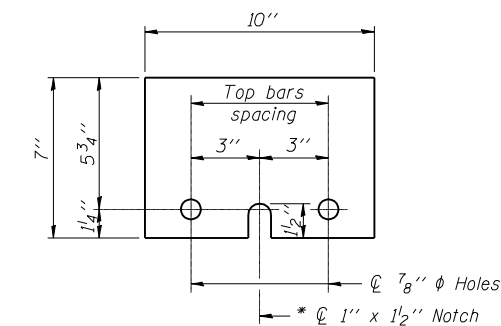
Cost of anchorage is included with Temporary Concrete Barrier. The 1" x 7" x 10" plate shall not be removed until stage II construction forms and all reinforcement bars are in place and the concrete is ready to be placed.



DETAIL I



DETAIL II



STEEL RETAINER PL 1" x 7" x 10"

* Required only with Detail II

** Wood blocks may be omitted when required to provide minimum stage traffic lane width. When the wood blocks are omitted, the concrete barrier shall be in direct contact with the steel retainer plate.

K+ K-Plus Engineering, Ltd.
753 WINDSOR ROAD
CHARLESTON, IL 61920
(217) 348-1900
WWW.K-PLUSENGINEERING.LTD.COM
ILLINOIS DEPARTMENT OF PROFESSIONAL REGULATION REGISTRATION #184-003685

** THIS DOCUMENT IS THE PROPERTY OF K-PLUS ENGINEERING, LTD. AND NO PART HEREIN SHALL BE USED EXCEPT FOR THIS SPECIFIC PROJECT WITHOUT THE WRITTEN CONSENT OF K-PLUS ENGINEERING, LTD.

REVISIONS		ILLINOIS DEPARTMENT OF TRANSPORTATION
NAME	DATE	
		TEMPORARY CONCRETE BARRIER FOR STAGE CONSTRUCTION IL RTE. 104 OVER HORSE CREEK FAP 753 - SECTION 142BR-4 SANGAMON COUNTY STA 989+90.00 SN 084-0176