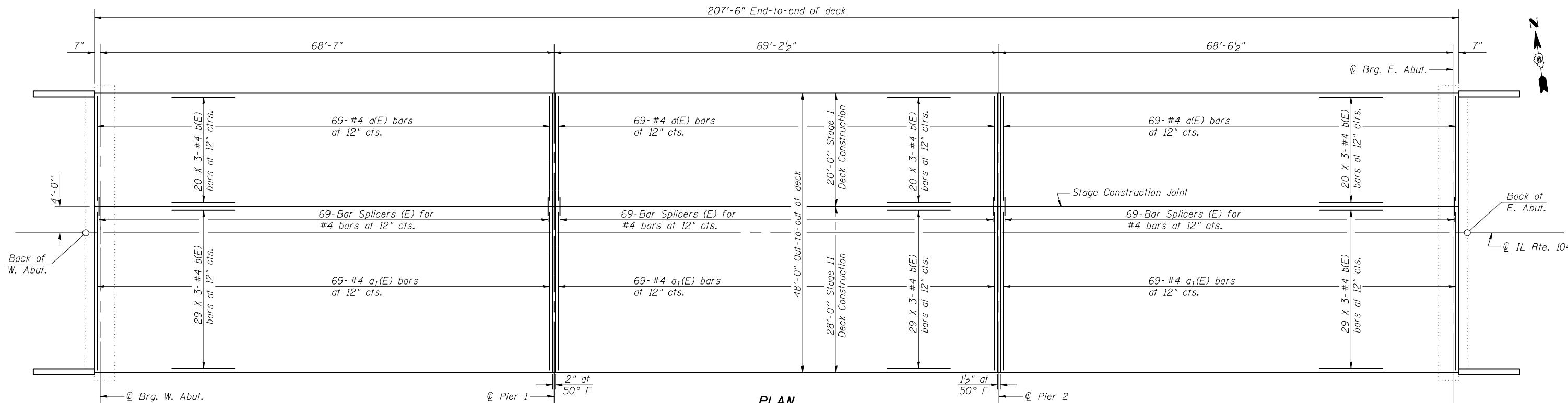
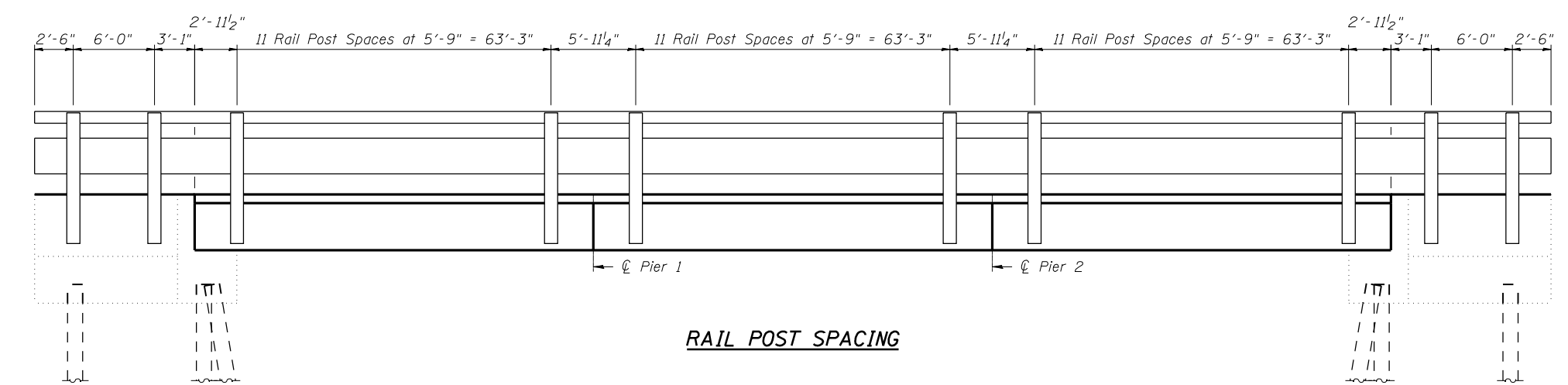


ROUTE NO.	SECTION	COUNTY	SHEETS	SHEET
F.A.P. 753	142 BR-4	SANGAMON	24	17
FED. ROAD DIST. NO. 7		ILLINOIS		FED. AID PROJECT

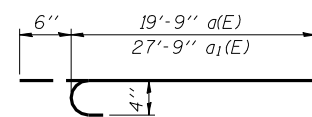


PLAN

Notes:  
For remainder of superstructure details, see sheets 5 and 6 of 11.  
Bars indicated thus 20 x 3-#4 etc. indicates 20 lines of bars with 3 lengths per line.  
See sheet 8 of 11 for Rail Post attachment to wingwall detail.



RAIL POST SPACING

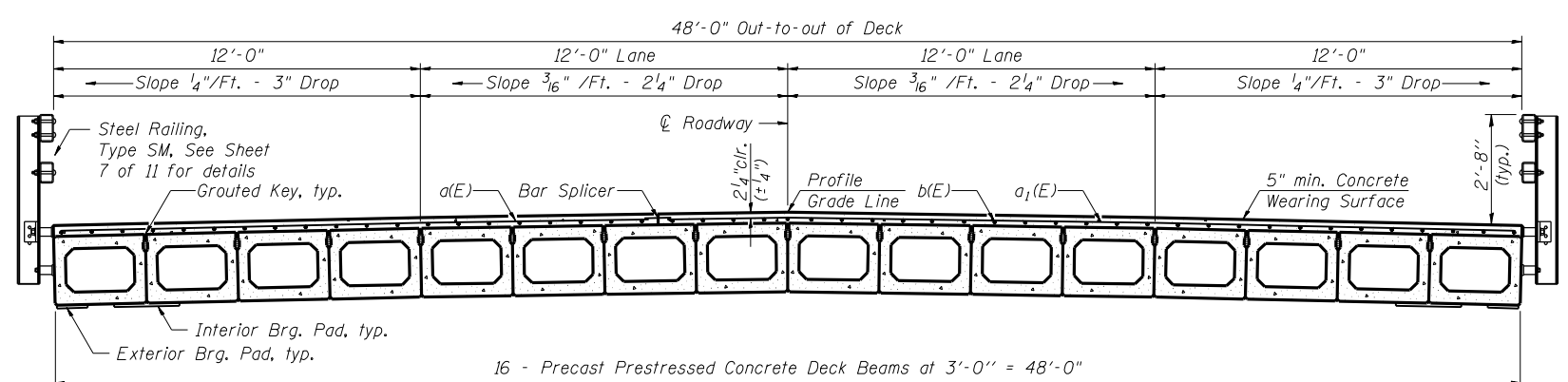


a(E) & a1(E) BAR

**MIN. BAR LAP**  
#4 bar - 1' 8"

**SUPERSTRUCTURE BILL OF MATERIAL**

Bar No.	Size	Length	Shape
a(E)	207 #4	20'-3"	C
a1(E)	207 #4	28'-3"	C
b(E)	441 #4	23'-11"	C
Reinforcement Bars, Epoxy Coated		Pound	13760
Concrete Wearing Surface, 5"		Sq. Yd.	1105
Preformed Joint Strip Seal		Foot	96
Bar Splicers		Each	207



CROSS SECTION  
(Looking East)

**K+ K-Plus Engineering, Ltd.**  
753 WINDSOR ROAD  
CHARLESTON, IL 61920  
(217) 348-1900  
WWW.K-PLUSENGINEERING.LTD.COM  
ILLINOIS DEPARTMENT OF PROFESSIONAL REGULATION REGISTRATION #184-003685

THIS DOCUMENT IS THE PROPERTY OF K-PLUS ENGINEERING, LTD. AND NO PART HEREIN SHALL BE USED EXCEPT FOR THIS SPECIFIC PROJECT WITHOUT THE WRITTEN CONSENT OF K-PLUS ENGINEERING, LTD.

REVISIONS	NAME	DATE

ILLINOIS DEPARTMENT OF TRANSPORTATION

**SUPERSTRUCTURE**

IL RTE. 104 OVER HORSE CREEK  
FAP 753 - SECTION 142BR-4  
SANGAMON COUNTY  
STA 989+90.00  
SN 084-0176

DATE: 08-01-07

DRAWN BY: ADG  
CHECKED BY: D