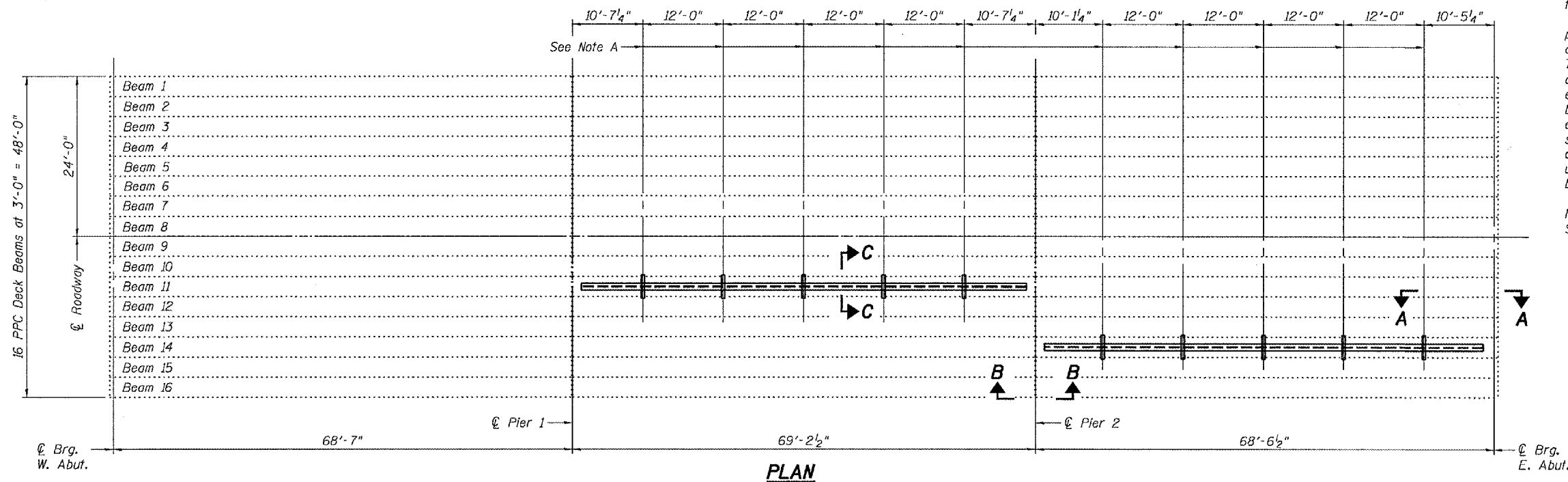
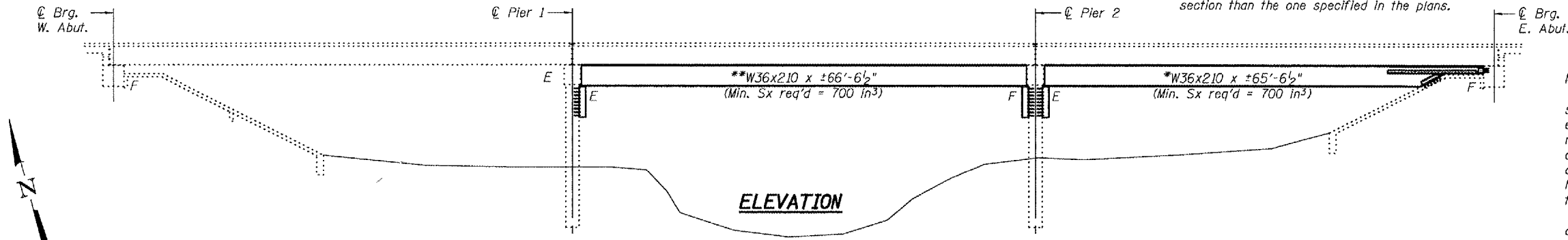


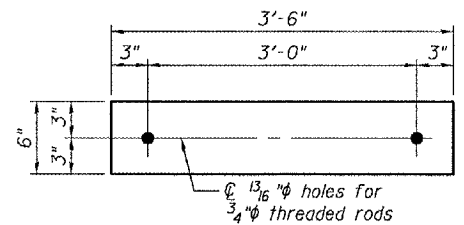
STATE OF ILLINOIS
DEPARTMENT OF TRANSPORTATION

*Contractor is to verify beam length prior to ordering material. Also verify abutment notch dimensions prior to fabrication. Other sections meeting the section modulus requirements shown may be allowed subject to approval by the Bureau of Bridges and Structures however, no additional payment will be allowed if the contractor chooses a heavier steel section than the one specified in the plans.

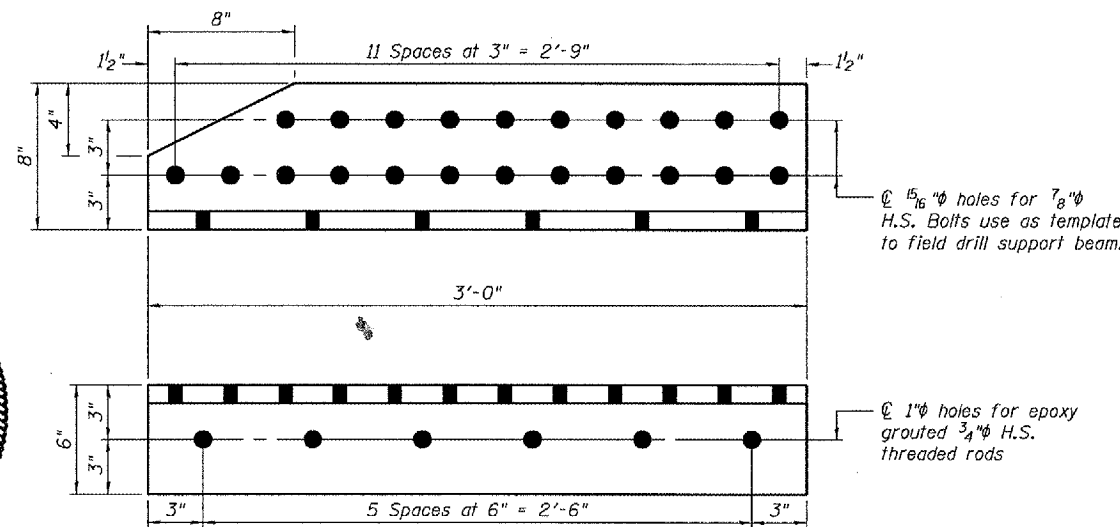
ROUTE NO.	SECTION	COUNTY	TOTAL SHEETS	SHEET NO.	SHEET NO.
		Sangamon	24	24A	2 SHEETS
FED. ROAD DIST. NO. 7		ILLINOIS		FED. AID PROJECT	
Contract Number: 72A81					



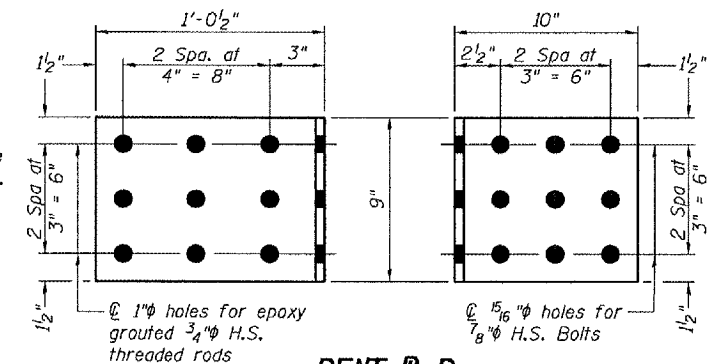
Note A:
 ☉ Transverse Tie Pl (5 per span).
 Place additional shims at midpoints between tie plates. Securely weld shims to top flange of support beam. Min shim size is 6" x flange width.



TRANSVERSE TIE PL A
 Pl 1/2" x 6" x 3'-6" (10 Req'd)



SLOPEWALL ANCHOR L C
 (L8x6x2)
 (1 req'd as shown, 1 req'd opp. hand)



BENT PL B
 Pl 1/2" x 9" x 1'-10 1/2" (2 Req'd)

TOTAL BILL OF MATERIAL

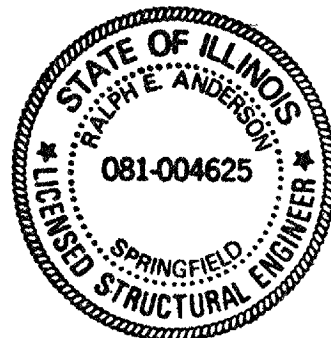
ITEM	UNIT	QUANTITY
Furnishing and Erecting Structural Steel	Pound	31,320
** Controlled Low Strength Material	Cu. Yd.	1.0

** Assumed quantity used for establishing item only.

PLAN AND ELEVATION
F.A.P. RT. 753 RT. 104
SANGAMON COUNTY
SN 084-0176

DESIGNED	Dominic Bolino	September 14, 2007
CHECKED	Adrian I. Hallway	EXAMINED
DRAWN	ATH	PASSED
CHECKED	ATH	

September 14, 2007
 EXAMINED
 PASSED
 ENGINEER OF BRIDGES AND STRUCTURES



Expires: November 30, 2008