

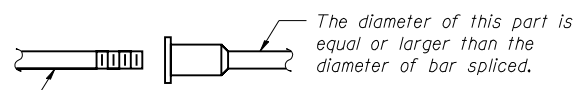
ROUTE NO.	SECTION	COUNTY	SHEETS	SHEET NO.
F.A.P. 753	142 BR-4	SANGAMON	24	24
FED. ROAD DIST. NO. 7	ILLINOIS	FED. AID PROJECT		

**NOTES**

Bar splicer assemblies shall be of an approved type and shall develop in tension at least 125 percent of the yield strength of the lapped reinforcement bars.  
 Splicer rods shall be of minimum 60 ksi yield strength, threaded or coiled full length.  
 All reinforcement bars shall be lapped and tied to the splicer rods or dowel bars.  
 Bar splicer assemblies shall be epoxy coated according to the requirements for reinforcement bars.  
 Other systems of similar design may be submitted to the Engineer for approval. Approval shall be based on certified test results from an approved testing laboratory that the proposed bar splicer assembly satisfies the following requirements:

- ① Minimum Capacity (Tension in kips) =  $1.25 \times f_y \times A_t$
  - ② Minimum \*Pull-out Strength (Tension in kips) =  $0.66 \times f_y \times A_t$
- Where  $f_y$  = Yield strength of lapped reinforcement bars in ksi.  
 $A_t$  = Tensile stress area of lapped reinforcement bars.  
 \* = 28 day concrete

The diameter of this part is the same as the diameter of the bar spliced.



The diameter of this part is equal or larger than the diameter of bar spliced.

**ROLLED THREAD DOWEL BAR**



**\*\* ONE PIECE**

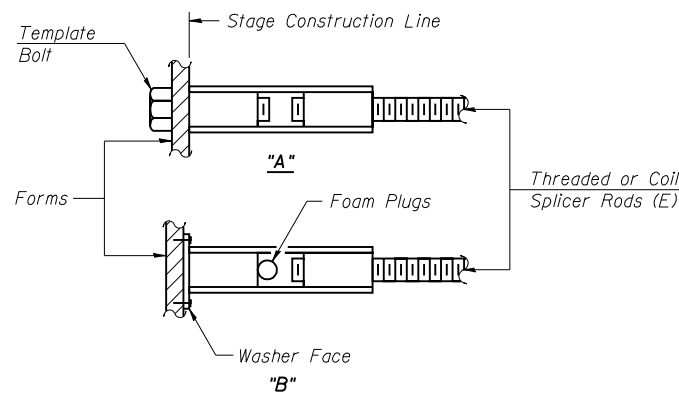
Wire Connector



**WELDED SECTIONS**

**BAR SPLICER ASSEMBLY ALTERNATIVES**

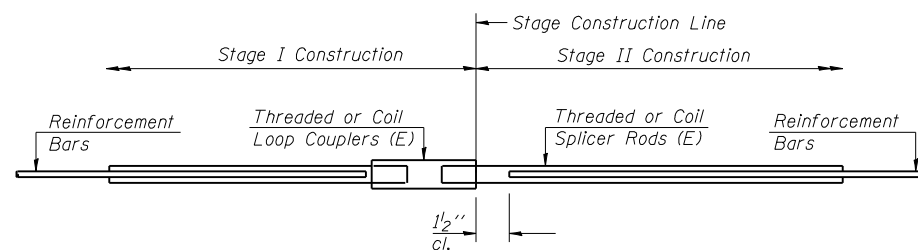
\*\* Heavy Hex Nuts conforming to ASTM A 563, Grade C, D or DH may be used.



**INSTALLATION AND SETTING METHODS**

"A" : Set bar splicer assembly by means of a template bolt.  
 "B" : Set bar splicer assembly by nailing to wood forms or cementing to steel forms.  
 (E) : Indicates epoxy coating.

BAR SPLICER ASSEMBLIES			
Bar Size to be Spliced	Splicer Rod or Dowel Bar Length	Strength Requirements	
		Min. Capacity kips - tension	Min. Pull-Out Strength kips - tension
#4	1'-8"	14.7	7.9
#5	2'-0"	23.0	12.3
#6	2'-7"	33.1	17.4
#7	3'-5"	45.1	23.8
#8	4'-6"	58.9	31.3
#9	5'-9"	75.0	39.6
#10	7'-3"	95.0	50.3
#11	9'-0"	117.4	61.8



**STANDARD**

Bar Size	No. Assemblies Required	Location
#4	207	Superstructure
#8	16	Piers

**K+ K-Plus Engineering, Ltd.**  
 753 WINDSOR ROAD  
 CHARLESTON, IL 61920  
 (217) 348-1900  
 WWW.K-PLUSENGINEERING.LTD.COM  
 ILLINOIS DEPARTMENT OF PROFESSIONAL REGULATION REGISTRATION #184-003685

\*\* THIS DOCUMENT IS THE PROPERTY OF K-PLUS ENGINEERING, LTD. AND NO PART HEREIN SHALL BE USED \*\* EXCEPT FOR THIS SPECIFIC PROJECT WITHOUT THE WRITTEN CONSENT OF K-PLUS ENGINEERING, LTD.

REVISIONS		ILLINOIS DEPARTMENT OF TRANSPORTATION
NAME	DATE	
		<b>BAR SPLICER ASSEMBLY DETAILS</b>  IL RTE. 104 OVER HORSE CREEK FAP 753 - SECTION 142BR-4 SANGAMON COUNTY STA 989+90.00 SN 084-0176 DATE: 08-01-07

DRAWN BY: ADG  
 CHECKED BY: DF