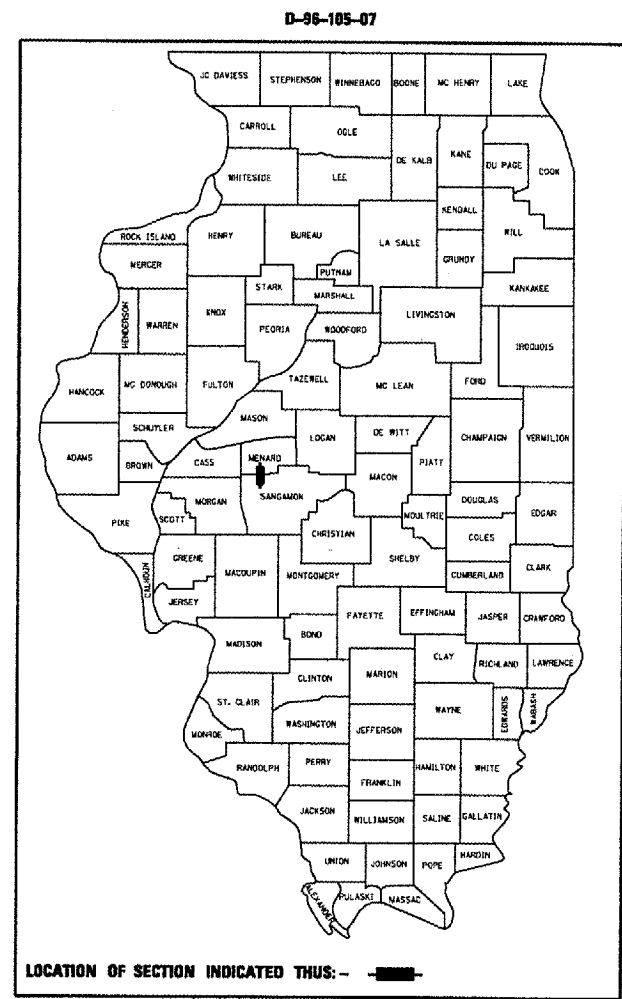


F.A.P. RTE.	SECTION	COUNTY	TOTAL SHEETS	SHEET NO.
34		**	13	1

• D-6 SHLDR RUMBLE STRIPS 2008
 ** MENARD, SANGAMON

STATE OF ILLINOIS
 DEPARTMENT OF TRANSPORTATION
 DIVISION OF HIGHWAYS
**PROPOSED
 HIGHWAY PLANS**

FAP ROUTE 34 (IL 97)
 SECTION D-6 SHLDR RUMBLE STRIPS 2008
 PROJECT: ACHSIP-0034 (025)
 MENARD, SANGAMON COUNTY
 C-96-105-07

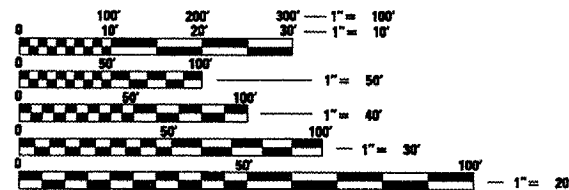


INDEX OF SHEETS

- 1 COVER SHEET
- 2 GENERAL NOTES AND LEGEND
- 3 SUMMARY OF QUANTITIES
- 4-6 SCHEDULE OF QUANTITIES
- 7-8 TYPICAL SECTIONS
- 9 LINE DIAGRAM
- 10-13 DETAILS

DESIGN DESIGNATION
 ILLINOIS ROUTE 97

ADT
 4,950 (2007)
 % PV = 90
 % MU + SU = 10



FULL SIZE PLANS HAVE BEEN PREPARED USING STANDARD ENGINEERING SCALES. REDUCED SIZED PLANS WILL NOT CONFORM TO STANDARD SCALES. IN MAKING MEASUREMENTS ON REDUCED PLANS, THE ABOVE SCALES MAY BE USED.

J.U.L.I.E.
 JOINT UTILITY LOCATION INFORMATION FOR EXCAVATION
 1-800-892-0123

END IMPROVEMENT
 STA 337+50

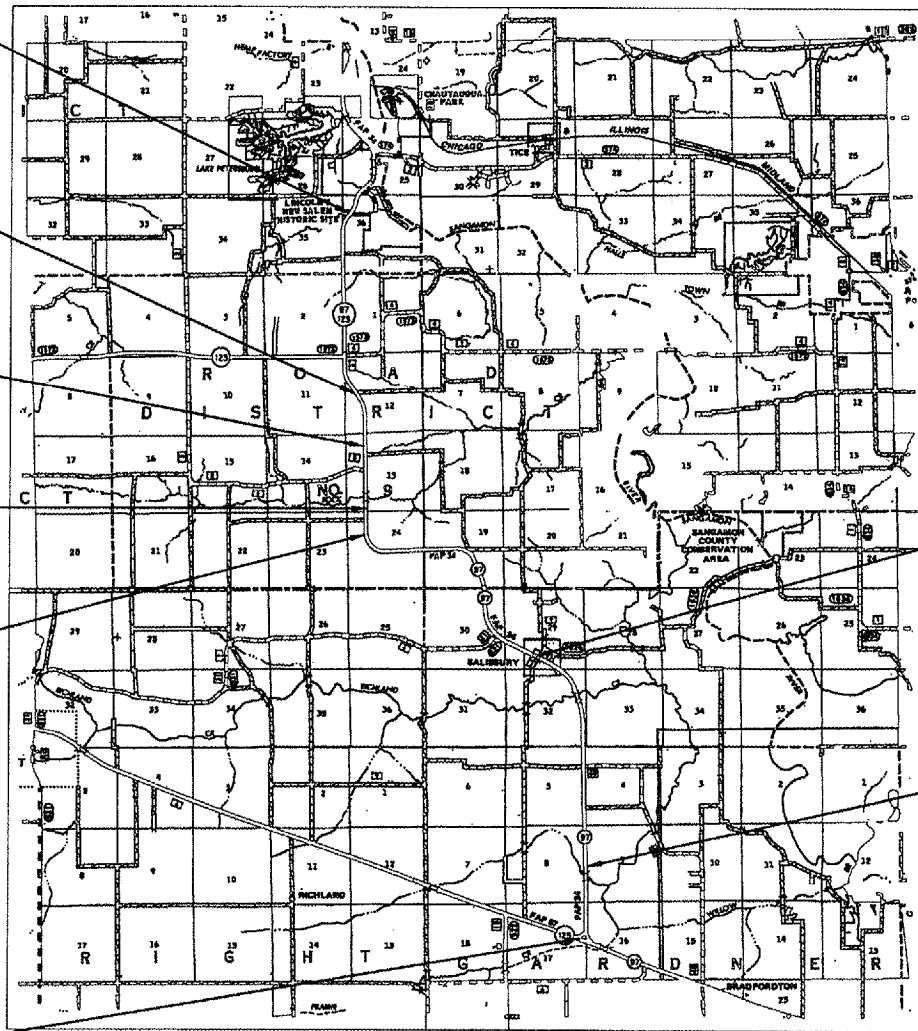
STA EQ
 243+68.15 AHD =
 14+33.15 BK

STA EQ
 100+00 BK =
 99+98.76 AHD

STA EQ
 110+00.21 BK =
 110+00 AHD

STA EQ
 226+00.77 BK =
 225+96.63 AHD

BEGIN IMPROVEMENT
 STA 498+84.63



STA EQ
 296+12.5 BK =
 290+76.1 AHD

STA EQ
 451+68.21 BK =
 452+00 AHD

STATE OF ILLINOIS
 DEPARTMENT OF TRANSPORTATION
 DIVISION OF HIGHWAYS

SUBMITTED *[Signature]* 10/23/07
 DEPUTY DIRECTOR OF HIGHWAYS, REGION ENGINEER

[Signature] October 12, 2007
 ENGINEER OF DESIGN AND ENVIRONMENT

[Signature] October 12, 2007
 DIRECTOR OF HIGHWAYS, CHIEF ENGINEER

PRINTED BY THE AUTHORITY
 OF THE STATE OF ILLINOIS

TOTAL LENGTH OF PROJECT: 59,214.0 = FEET 11.2 = MILES
 NET LENGTH OF PROJECT: 59,214.0 = FEET 11.2 = MILES

F.A.P. RTE.	SECTION	COUNTY	TOTAL SHEETS	SHEET NO.
34		**	13	2

STA. _____ TO STA. _____
 FED. ROAD DIST. NO. _____ ILLINOIS FED. AID PROJECT

* D-6 SHLDR RUMBLE STRIPS 2008
 ** MENARD, SANGAMON COUNTY

GENERAL NOTES AND COMMENTS

- ALL ENTRANCES CURRENTLY IN USE SHALL REMAIN ACCESSIBLE BOTH DURING AND AFTER CONSTRUCTION.
- NO LANE CLOSURES WILL BE ALLOWED WITHOUT FLAGGER PROTECTION AND NO WORK OR LANE CLOSURES PRIOR TO 9:00 AM.
- SAW CUTS SHALL BE MADE AT ALL COMMERCIAL, RESIDENTIAL, AND FIELD ENTRANCES (WITHIN LIMITS OF SHOULDER WIDENING) THAT HAVE ASPHALT ENTRANCES.
- ALL AGGREGATE NEEDED FOR TEMP ACCESS IS INCLUDED IN SHOULDER WORK AND EXCAVATION ACROSS DRIVEWAYS IS INCIDENTAL.
- NEW SHOULDERS WILL FOLLOW RADIUS AROUND ALL SIDEROAD QUADRANTS AS OUTLINED IN THE TYPICALS SECTION.
- ALL ADVANCED CURVE WARNING SIGNS SHALL HAVE A SUPPLEMENTAL PLAQUE NAMING CROSSROAD (W16-8) WHERE APPROPRIATE.
 CONVENTIONAL SIZE SIGNS SHALL BE USED
 IF THERE IS AN INTERSECTION THEN THE ADVANCE CURVE SIGN SHALL DEPICT IT. (SEE DETAIL SHEET 12 & 13)
- FIELD/RESIDENT ENGINEER WILL COORDINATE WITH OPERATION TO VERIFY NO PASSING ZONES.
- HIDDEN ENTRANCE SIGNS SHALL BE PLACED AT APROX STA* 308+00 SB, 370+00 NB, 80+00 SB & 132+00 NB RE WILL ADJUST ACCORDING TO SIGHT DISTANCE.
- DELINEATORS WILL BE SPACED ACCORDING TO STANDARD 635001 AND PLACED ON THE FIRST CURVE SOUTH OF SALISBURY ON THE EAST SIDE AT APROX. STA* 325+00 (FIELD VERIFY).
- ALL SIGN LOCATIONS WILL BE STAKED AND VERIFIED BY RESIDENT ENGINEER PRIOR TO INSTALLATION.
- PAINT PAVEMENT MARKING - LINE 5" WILL BE USED ON ALL AREAS OF NEW SHOULDER IF REQUIRED.
- CENTERLINE RUMBLE STRIPE WILL BE USED FOR THE NO PASSING ZONES WITHIN THE TWO REVERSE CURVES AND USE POLUREA PAVEMENT MARKING LINE 5" (DOUBLE YELLOW).
- ALL EXCAVATED MATERIAL FROM EXCAVATION & SHOULDER GRADING SHALL BE REMOVED AND DISPOSED OUTSIDE OF EXISTING R.O.W., ACCORDING TO ARTICLE 202.03
- THERE SHALL BE NO LANE CLOSURES WITHIN THE LIMITS OF THIS PROJECT DURING THE ILLINOIS STATE FAIR AUGUST 10-19, 2007
- SHOULDER DROP-OFF SIGNS (W21-1103) IF THERE IS MORE THAN 3 INCHES DROP OFF - ARTICLE 701.07 INCLUDED IN PAY ITEM TRAFFIC CONTROL 701326

COMMITMENTS

THE FIELD/RESIDENT ENGINEER SHALL CONTACT STUDIES AND PLANS CONCERNING ANY MAJOR PLAN CHANGES TO MAKE SURE NO PREVIOUS COMMITMENTS (NOT LISTED) WERE MADE AFFECTING THE DESIGN, AND ALLOW AN IMPROVED DESIGN FOR FUTURE PROJECTS.

EXPERIMENTAL FEATURES - CENTERLINE RUMBLE STRIPS & SHOULDER RUMBLE STRIPS ON TWO-LANE RURAL HIGHWAY

Route FAP 34 (IL RT 97)
 Section D-6 SHLDR RUMBLE STRIPS 2008
 County Menard / Sangamon

DISTRICT SIX

EXAMINED July 24 2007
Kevin J. Hearn
 OPERATIONS ENGINEER

EXAMINED Aug 13 2007
W.R. Fry
 PROGRAM IMPLEMENTATION ENGINEER

EXAMINED July 18 2007
W.R. Fry
 PROGRAM DEVELOPMENT ENGINEER

LIST OF STANDARDS

000001-04 701006-02
 482001-01 701011-01
 635001 701201-02
 642001 701301-02
 720001 701306-01
 728001 701326-02
 780001-01

THE FOLLOWING MIXTURE REQUIREMENTS ARE APPLICABLE FOR THIS PROJECT

MIXTURE USE:	SHOULDERS	INCIDENTAL SURFACE
PG:	PG 58-22	PG 64-22
DESIGN ACR VOIDS:	2.0% @ N DESIGN = 30	4.0% @ N DESIGN = 50
MIXTURE COMPOSITION: (GRADATION MIXTURE)	BAM	IL 9.5 OR 12.5
FRICTION AGGREGATE:	N/A	MIX "C"

PLOT DATE = Aug 15-2007 09:35:54 AM
 FILE NAME = c:\pwworkspace\72828\72828.dgn
 PLOT SCALE = 1/8" = 1' IN.
 USER NAME = bmlj

REVISIONS	
NAME	DATE

ILLINOIS DEPARTMENT OF TRANSPORTATION
GENERAL NOTES
 FAP 34 (IL 97)
 SECTION D-6 SHLDR
 RUMBLE STRIPS 2008
 MENARD, SANGAMON COUNTY

SCALE: VERT. _____
 HORIZ. _____

DRAWN BY _____
 CHECKED BY _____

Rev.

F.A.P. RTE.	SECTION	COUNTY	TOTAL SHEETS	SHEET NO.
34	.	**	13	3
STA.		TO STA.		
FED. ROAD DIST. NO.		ILLINOIS FED. AID PROJECT		
* D-6 SHLDR RUMBLE STRIPS 2008				
** MENARD, SANGAMON COUNTY				

SUMMARY OF QUANTITIES

PAY CODE	ITEM DESCRIPTION	UNIT	SFTY - 2A 90% FED 10% STATE TOTAL	SFTY - 2A SANGAMON CO. SUB-TOTAL	SFTY - 2A MENARD CO. SUB-TOTAL
20200600	EXCAVATING AND GRADING EXISTING SHOULDER	UNIT	760.0	356.0	404.0
35800100	PREPARATION OF BASE	SQ YD	250.0	125.0	125.0
35800200	AGGREGATE BASE REPAIR	TON	50.0	25.0	25.0
40200800	AGGREGATE SURFACE COURSE, TYPE B	TON	50.0	25.0	25.0
40600982	HOT -MIX ASPHALT SURFACE REMOVAL - BUTT JOINT	SQ YD	400.0	200.0	200.0
40800050	INCIDENTAL HOT -MIX ASPHALT SURFACE	TON	35.0	16.0	19.0
48101200	AGGREGATE SHOULDERS, TYPE B	TON	3,550.0	1,666.0	1,884.0
48203029	HOT-MIX ASPHALT SHOULDERS, 8"	SQ YD	25,354.0	11,902.0	13,452.0
63500105	DELINEATORS	EACH	20.0	20.0	0
64200105	SHOULDER RUMBLE STRIP	FOOT	113,400.0	50,943.0	62,457.0
67000400	ENGINEER'S FIELD OFFICE, TYPE A	CAL MO	6.0	3.0	3.0
67100100	MOBILIZATION	L SUM	1.0	0.5	0.5
70100450	TRAFFIC CONTROL AND PROTECTION, STANDARD 701201	L SUM	1.0	0.5	0.5
70100460	TRAFFIC CONTROL AND PROTECTION, STANDARD 701306	L SUM	1.0	0.5	0.5
70100500	TRAFFIC CONTROL AND PROTECTION, STANDARD 701326	L SUM	1.0	0.5	0.5
70103815	TRAFFIC CONTROL SURVEILLANCE	CAL DA	20.0	10.0	10.0
70300100	SHORT TERM PAVEMENT MARKING	FOOT	7,000.0	3,500.0	3,500.0
70301000	WORK ZONE PAVEMENT MARKING REMOVAL	SQ FT	2,334	1,167	1,167
* 72000100	SIGN PANEL-TYPE 1	SQ FT	250.0	75.0	175.0
* 72800100	TELESCOPING STEEL SIGN SUPPORT	FOOT	600.0	200.0	400.0
* 78001120	PAINT PAVEMENT MARKING - LINE 5"	FOOT	76,000.0	35,645.0	40,355.0
* 78008220	POLYUREA PAVEMENT MARKING TYPE-1 LINE 5"	FOOT	14,000.0	0	14,000.0
78300105	PAVEMENT MARKING REMOVAL	FOOT	14,000.0	0	14,000.0
X0325866	CENTER LINE - RUMBLE STRIP	FOOT	7,000.0	0	7,000.0

*SPECIALTY ITEMS

REVISIONS	
NAME	DATE

ILLINOIS DEPARTMENT OF TRANSPORTATION
 SUMMARY OF QUANTITIES
 FAP 34 (IL 97)
 SECTION D-6 SHLDR
 RUMBLE STRIPS 2008
 MENARD, SANGAMON COUNTY
 SCALE: VERT. DATE
 HORIZ. DRAWN BY
 CHECKED BY

Rev.

PLT DATE : 4/15/08 08:43:00
 FILE NAME : c:\p0\proj\12b28\12b28.dgn
 PLOT SCALE : 1/8"=1'-0" / IN.
 USER NAME : laughton

F.A.P. RTE.	SECTION	COUNTY	TOTAL SHEETS	SHEET NO.
34	*	**	13	4

STA.	TO STA.
FED. ROAD DIST. NO.	ILLINOIS FED. AID PROJECT

- * D-6 SHLDR RUMBLE STRIPS 2008
- ** MENARD, SANGAMON COUNTY

HOT MIX ASPHALT SHOULDER SCHEDULE & RUMBLE STRIPS							
LOCATION (STA TO STA)	EXISTING HMA SHLD WIDTH	LENGTH	EXCAVATING AND GRADING EXISTING SHOULDERS <i>20200600</i>	HMA SHOULDERS 8" <i>48203029</i>	AGG SHOULDERS TY - B <i>48101200</i>	SHOULDER RUMBLE STRIPS <i>64200105</i>	PAINT PAVEMENT MARKING LINE 5" <i>78001120</i>
	FOOT	FOOT	UNIT	SQ YD	TON	FOOT	FOOT
IL 97 - PART "A" MENARD COUNTY							
LT 243+68.15 (AH) TO LT 337+50	8.0	9,381.9	0.0	0.0	0	9,381.9	
RT 243+68.15 (AH) TO RT 337+36	8.0	9,367.9	0.0	0.0	0	9,367.9	
308+55 (GUARDRAIL BOX CULVERT)							
300+07 (GUARDRAIL BOX CULVERT)							
IL 97 - PART "B" MENARD COUNTY							
LT 14+33.15 (AH) TO LT 88+08	1.0	7,374.9	73.7	2,458.3	344.2	7,374.9	7,374.9
LT 88+08 TO LT 97+36	4.0	928.0	0.0	0.0	0	928.0	
LT 97+36 TO LT 99+98.76 (BK)	1.0	262.8	2.6	87.6	12.3	262.8	262.8
LT 100+00.00 (AH) TO LT 104+05	1.0	405.0	4.1	135.0	18.9	405.0	405.0
LT 104+05 TO LT 105+41 (BRIDGE OMISSION)		136.0					
LT 105+41 TO LT 106+08	1.0	67.0	0.7	22.3	3.1	67.0	67.0
LT 106+08 TO LT 110+00.00 (BK)	8.0	392.0	0.0	0.0	0	392.0	
LT 110+00.21 (AH) TO LT 113+62	8.0	361.8	0.0	0.0	0	361.8	
LT 113+62 TO LT 114+00	8.0	38.0	0.0	0.0	0	38.0	
LT 114+00 TO LT 225+96.63 (BK)	1.0	11,196.6	112.0	3,732.2	522.5	11,196.6	11,196.6
LT 226+00.77 TO LT 234+28.00	1.0	827.2	8.3	275.7	38.6	827.2	827.2
RT 14+33.15 (AH) TO RT 87+70	1.0	7,336.9	73.4	2,445.6	342.4	7,336.9	7,336.9
RT 87+70 TO RT 97+10	4.0	940.0	0.0	0.0	0	940.0	
RT 97+10 TO RT 99+98.76 (BK)	1.0	288.8	2.9	96.3	13.5	288.8	288.8
RT 100+00.00 (AH) TO RT 104+05	1.0	405.0	4.1	135.0	18.9	405.0	405.0
RT 104+05 TO RT 105+41 (BRIDGE OMISSION)		136.0					
RT 105+41 TO RT 107+08	1.0	167.0	1.7	55.7	7.8	167.0	167.0
RT 107+08 TO RT 110+00.00 (BK)	8.0	292.0	0.0	0.0	0	292.0	
RT 110+00.21 (AH) TO RT 113+62	8.0	361.8	0.0	0.0	0	361.8	
RT 113+62 TO RT 114+00	8.0	38.0	0.0	0.0	0	38.0	
RT 114+00 TO RT 225+96.63 (BK)	1.0	11,196.6	112.0	3,732.2	522.5	11,196.6	11,196.6
RT 226+00.77 TO RT 234+28	1.0	827.2	8.3	275.7	38.6	827.2	827.2

PLOT DATE = Aug-15-2007 10:02:10AM
 FILE NAME = c:\p\projects\610597\ahsch.dgn
 PLOT SCALE = 1/8"=1'-0" / IN.
 USER NAME = laughlin-1

REVISIONS	
NAME	DATE

ILLINOIS DEPARTMENT OF TRANSPORTATION
SCHEDULE
 FAP 34 (IL 97)
 SECTION D-6 SHLDR
 RUMBLE STRIPS 2008
 MENARD, SANGAMON COUNTY

SCALE: VERT. _____
 HORIZ. _____

DATE _____ DRAWN BY _____
 CHECKED BY _____

F.A.P. RTE.	SECTION	COUNTY	TOTAL SHEETS	SHEET NO.
34	*	**	13	5

STA.	TO STA.
FED. ROAD DIST. NO.	ILLINOIS FED. AID PROJECT

- * D-6 SHLDR RUMBLE STRIPS 2008
- ** MENARD, SANGAMON COUNTY

HOT MIX ASPHALT SHOULDER SCHEDULE & RUMBLE STRIPS							
LOCATION (STA TO STA)	EXISTING	LENGTH	EXCAVATING	HMA	AGG	SHOULDER	PAINT
	HMA SHLD		AND GRADING	SHOULDERS	SHOULDERS	RUMBLE	PAVEMENT
	WIDTH		EXISTING	8"	TY - B	STRIPS	MARKING
			SHOULDERS				LINE 5"
			20200600	48203029	48101200	64200105	78001120
	FOOT	FOOT	UNIT	SQ YD	TON	FOOT	FOOT
IL 97 - PART "B" SANGAMON COUNTY							
LT 234+28 TO LT 291+64	1.0	5,736.0	57.4	1,912.0	267.7	5,672.0	5,736.0
LT 291+64 TO LT 300+68	0.0	904.0	0.0	0.0	0	0.0	
LT 300+68 TO LT 314+35	1.0	1,367.0	13.7	455.7	63.8	635.0	1,367.0
LT 314+35 TO LT 326+34	8.0	1,199.0	0.0	0.0	0	1,199.0	
LT 326+34 TO LT 331+23.59	1.0	489.6	4.9	163.2	22.8	489.6	489.6
LT 331+23.59 TO LT 332+31.76 (BRIDGE OMISSION)		108.2					
LT 332+31.76 TO LT 337+89	1.0	557.2	5.6	185.7	26.0	557.2	557.2
LT 337+89 TO LT 347+50	8.0	961.0	0.0	0.0	0	961.0	
LT 347+50 TO LT 444+50	1.0	9,700.0	97.0	3,233.3	452.7	9,700.0	9,700.0
LT 444+50 TO LT 451+68.21 (BK)	8.0	718.2	0.0	0.0	0	718.2	
LT 452+00.00 (AH) TO LT 455+00	8.0	300.0	0.0	0.0	0	300.0	
LT 455+00 TO LT 456+47	8.0	147.0	0.0	0.0	0	147.0	
LT 456+47 TO LT 457+41 (BRIDGE OMISSION)		94.0					
LT 457+41 TO LT 462+00	8.0	459.0	0.0	0.0	0	459.0	
LT 462+00 TO LT 465+50	8.0	350.0	0.0	0.0	0	350.0	
LT 465+50 TO LT 498+50	8.0	3,300.0	0.0	0.0	0	3,300.0	
RT 234+28 TO RT 291+00	1.0	5,736.0	57.4	1,912.0	267.7	5,736.0	5,736.0
RT 291+00 TO RT 304+00	0.0	904.0	0.0	0.0	0	0.0	
RT 304+00 TO RT 313+30	1.0	1,367.0	13.7	455.7	63.8	530.0	1,367.0
RT 313+30 TO RT 320+14	8.0	1,199.0	0.0	0.0	0	1,199.0	
RT 320+14 TO RT 330+55	1.0	489.6	4.9	163.2	22.8	489.6	489.6
RT 330+55 TO RT 331+23.59	4.0	1,199.0	0.0	0.0	0	1,199.0	
RT 331+23.59 TO RT 332+31.76 (BRIDGE OMISSION)		108.2					
RT 332+31.76 TO RT 333+00	4.0	1,199.0	0.0	0.0	0	1,199.0	
RT 333+00 TO RT 337+89	1.0	557.2	5.6	185.7	26.0	557.2	557.2
RT 337+89 TO RT 348+25	8.0	961.0	0.0	0.0	0	961.0	
RT 348+25 TO RT 444+50	1.0	9,700.0	97.0	3,233.3	452.7	9,700.0	9,700.0
RT 444+50 TO RT 450+00	8.0	1,050.0	0.0	0.0	0.0	1,050.0	
RT 450+00 TO RT 451+68.21 (BK)	8.0	168.2	0.0	0.0	0.0	168.2	
RT 452+00.00 (AH) TO RT 456+47	8.0	447.0	0.0	0.0	0.0	447.0	
RT 456+47 TO RT 457+41 (BRIDGE OMISSION)		94.0					
RT 457+41 TO RT 459+50	8.0	459.0	0.0	0.0	0.0	459.0	
RT 459+50 TO RT 467+50	8.0	350.0	0.0	0.0	0.0	350.0	
RT 467+50 TO RT 498+50	8.0	3,300.0	0.0	0.0	0.0	3,300.0	
ENTRANCES					-46.7	-1,000.0	-500.0
TOTAL =			760.5	25,351.5	3,502.5	113,289.3	75,554.6

NOTE:

TOWN OF SALISBURY
OMISSION OF RUMBLE STRIP
290+00 TO 308+00

118406.640 FEET
x 0.5
59203.320 FEET
11.213 MILES

PLOT DATE = Aug-15-2007 10:02:10AM
FILE NAME = c:\p\projects\0610507\ahsch.dgn
PLOT SCALE = 1/8"=1'-0" / IN.
USER NAME = laughlin-1

REVISIONS	
NAME	DATE

ILLINOIS DEPARTMENT OF TRANSPORTATION
SCHEDULE
FAP 34 (IL 97)
SECTION D-6 SHLDR
RUMBLE STRIPS 2008
MENARD, SANGAMON COUNTY
SCALE: VERT. DRAWN BY
 HORIZ. CHECKED BY
DATE

F.A.P. RTE.	SECTION	COUNTY	TOTAL SHEETS	SHEET NO.
34	*	**	13	6

STA.	TO STA.
FED. ROAD DIST. NO.	ILLINOIS FED. AID PROJECT

- D-6 SHLDR RUMBLE STRIPS 2008
- ** MENARD, SANGAMON COUNTY

**“CHEVRONS”
PLACEMENT AND SPACING**

		FROM	TO	TOTAL
		14+62	23+24	7 EA.
OFFSET	STA.	DISTANCE		REF.
RT 6.0' EOS	14+62			(TANGENT)
RT 6.0' EOS	15+95	133'		(PC)
RT 6.0' EOS	17+43	148'		
RT 6.0' EOS	18+91	148'		
RT 6.0' EOS	20+39	148'		
RT 6.0' EOS	21+87	148'		
RT 6.0' EOS	23+24	137'		(PT)

		FROM	TO	TOTAL
		38+66	50+00	8 EA.
OFFSET	STA.	DISTANCE		REF.
RT 6.0' EOS	38+66			(TANGENT)
RT 6.0' EOS	40+17	151'		(PC)
RT 6.0' EOS	41+85	168'		
RT 6.0' EOS	43+53	168'		
RT 6.0' EOS	45+21	168'		
RT 6.0' EOS	46+89	168'		
RT 6.0' EOS	48+57	168'		
RT 6.0' EOS	50+00	143'		(PT)

		FROM	TO	TOTAL
		129+20	147+23	13 EA.
OFFSET	STA.	DISTANCE		REF.
RT 6.0' EOS	129+20			TANGENT
RT 6.0' EOS	130+65	145'		(PC)
RT 6.0' EOS	132+25	160'		
RT 6.0' EOS	133+85	160'		
RT 6.0' EOS	135+45	160'		
RT 6.0' EOS	137+05	160'		
RT 6.0' EOS	138+65	160'		
RT 6.0' EOS	140+25	160'		
RT 6.0' EOS	141+85	160'		
RT 6.0' EOS	143+45	160'		
RT 6.0' EOS	145+05	160'		
RT 6.0' EOS	146+65	160'		
RT 6.0' EOS	147+23	58'		(PT)

		FROM	TO	TOTAL
		198+65	212+16	12 EA.
OFFSET	STA.	DISTANCE		REF.
RT 6.0' EOS	198+65			TANGENT
RT 6.0' EOS	199+77	124'		(PC)
RT 6.0' EOS	201+01	124'		
RT 6.0' EOS	202+25	124'		
RT 6.0' EOS	203+49	124'		
RT 6.0' EOS	204+73	124'		
RT 6.0' EOS	205+97	124'		
RT 6.0' EOS	207+21	124'		
RT 6.0' EOS	208+45	124'		
RT 6.0' EOS	209+69	124'		
RT 6.0' EOS	210+93	124'		
RT 6.0' EOS	212+16	123'		(PT)

CHEVRON SPACING WILL BE IN ACCORDANCE WITH THE ABOVE GUIDE; SIGNS SHOULD BE SUCH THAT THE MOTORIST ALWAYS HAS TWO CHEVRONS IN VIEW, UNTIL THE CHANGE IN ALIGNMENT ELIMINATES THE NEED FOR THE SIGNS. (VERIFY DAY AND NIGHT)

FIELD VERIFY TO CORRECT PLACEMENT OF SIGNS.

TOTAL CHEVRON SIGNS NEEDED = 40 EACH

PLOT DATE = Aug-15-2007 10:02:13AM
 FILE NAME = c:\p\projects\610597\ah\tsch.dgn
 PLOT SCALE = 1/8"=1'-0" / IN.
 USER NAME = laughlin-1

REVISIONS	
NAME	DATE

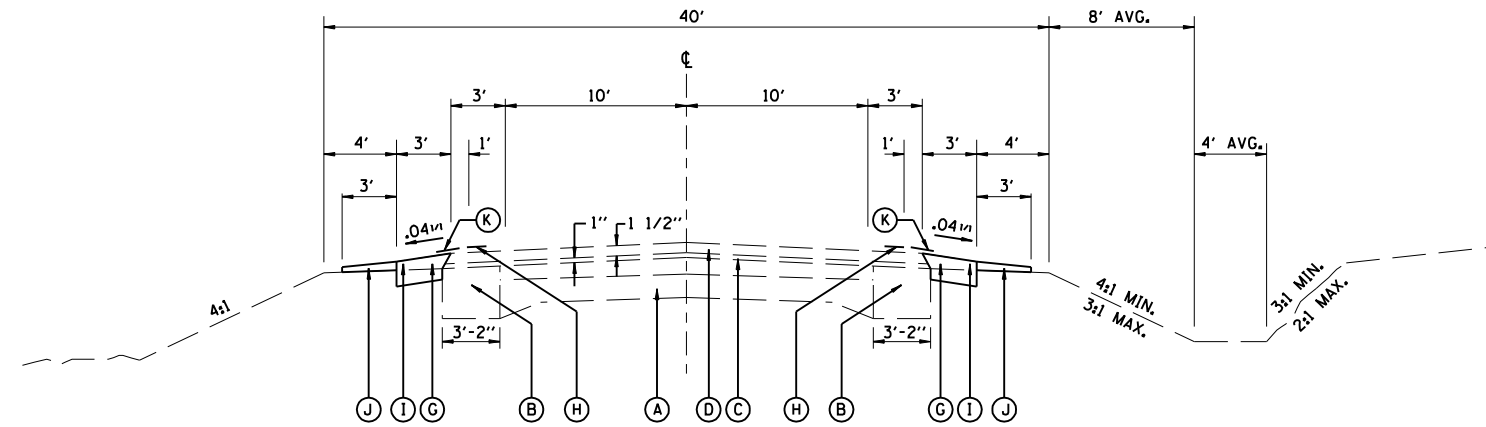
ILLINOIS DEPARTMENT OF TRANSPORTATION
SCHEDULE
 FAP 34 (IL 97)
 SECTION D-6 SHLDR
 RUMBLE STRIPS 2008
 MENARD, SANGAMON COUNTY

SCALE: VERT. _____
 HORIZ. _____
 DATE _____ DRAWN BY _____
 CHECKED BY _____

F.A.P. RTE.	SECTION	COUNTY	TOTAL SHEETS	SHEET NO.
34	.	**	13	7

STA.	TO STA.
FED. ROAD DIST. NO.	ILLINOIS FED. AID PROJECT

- D-6 SHLDR RUMBLE STRIPS 2008
- ** MENARD, SANGAMON COUNTY



LEGEND

- (A) EX PCC PAVT (9'-6 1/2" - 9") & BIT CONC SURF
- (B) EX BIT CONC BASE CRSE WIDENING 9"
- (C) EX LEVELING BINDER MACHINE METHOD 1"
- (D) EX BIT CONC SURF CRSE MIX D CLASS I - 1 1/2"
- (E) EX BITUMINOUS SHOULDER 8"
- (F) EX CONCRETE GUTTER, TYPE A
- (G) EX AGGREGATE SHOULDERS, TYPE A
- (H) EX PAINT PAVEMENT MARKING - LINE 5"
- (I) PROPOSED HMA SHOULDER 8"
- (J) PROPOSED AGGREGATE SHOULDER, TY B
- (K) PROPOSED SHOULDER RUMBLE STRIP (SEE DETAIL)

236+00 TO 291+00	14+33 TO 14+85
LT 291+00 TO 291+64	24+34 TO 39+17
LT 300+68 TO 304+00	51+00 TO RT 87+70
304+00 TO 313+30	51+00 TO LT 88+08
LT 313+30 TO 314+35	RT 97+10 TO 101+00
RT 320+14 TO 326+34	LT 97+36 TO 101+00
326+34 TO 328+45	101+00 TO 104+05
328+45 TO 330+55	105+41 TO 106+08
LT 330+55 TO 331+23.59	RT 106+08 TO 107+08
LT 332+31 TO 333+00	114+00 TO 129+45
333+00 TO 337+89	148+43 TO 198+57
LT 347+50 TO 348+25	213+36 TO 225+00
348+25 TO 380+00	
380+00 TO 444+50	

BRIDGE OMISSION

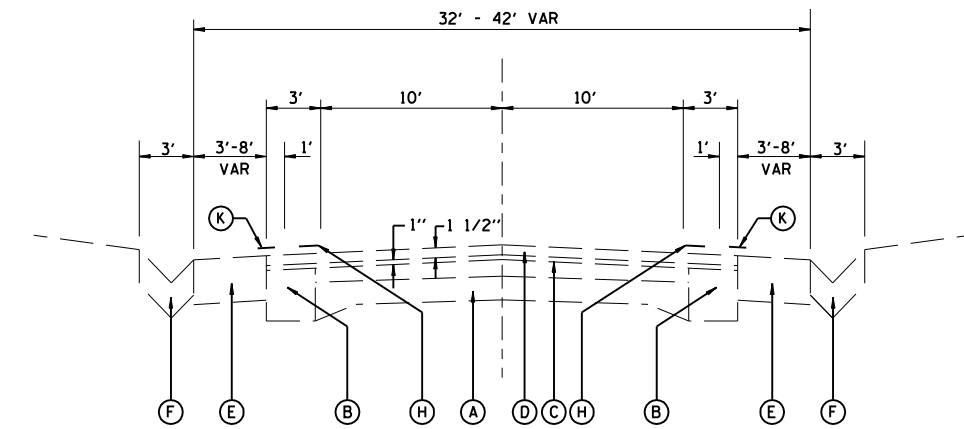
104+05 TO 105+41
331+23.59 TO 332+31.76
456+47 TO 457+41

"RUMBLE STRIP"

TOWN OF SALIBURY OMISSION

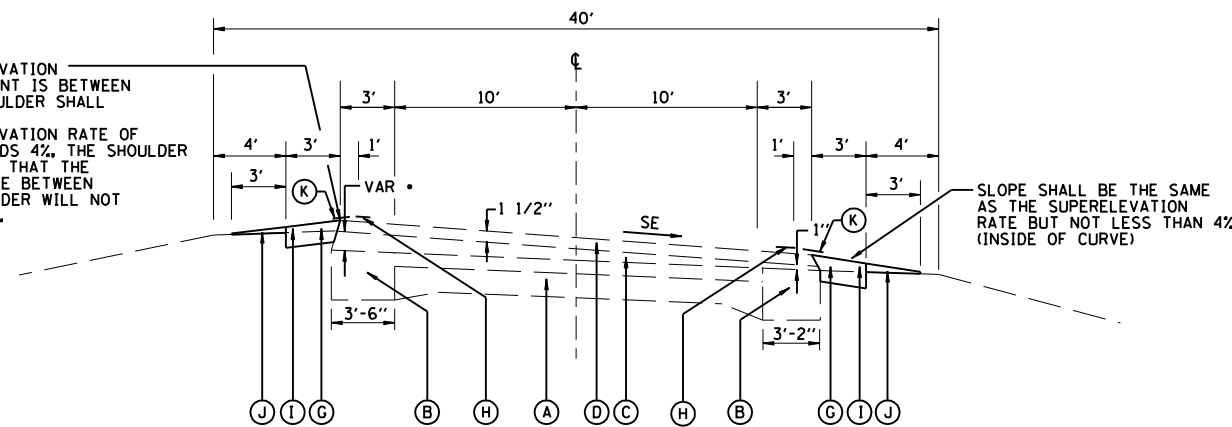
291+00 TO 308+00

TANGENT SECTION



RT 87+70 TO 97+10
LT 88+08 TO 97+36
LT 106+08 TO 107+08
RT & LT 107+08 TO 111+62
LT 111+62 TO 113+62
RT 313+30 TO 320+14
LT 314+35 TO 326+34
RT 330+55 TO 331+23.59
RT 332+31 TO 333+00

WHEN THE SUPER ELEVATION RATE OF THE PAVEMENT IS BETWEEN 0% AND 4%, THE SHOULDER SHALL BE SLOPED AT 4%.
WHEN THE SUPER ELEVATION RATE OF THE PAVEMENT EXCEEDS 4%, THE SHOULDER SHALL BE SLOPED SO THAT THE ALGEBRAIC DIFFERENCE BETWEEN PAVEMENT AND SHOULDER WILL NOT BE GREATER THAN 8%. (OUTSIDE OF CURVE)



SLOPE SHALL BE THE SAME AS THE SUPERELEVATION RATE BUT NOT LESS THAN 4% (INSIDE OF CURVE)

14+85 TO 24+34
39+17 TO 51+00
129+45 TO 148+43
198+57 TO 213+36
225+00 TO 236+00

SUPER ELEVATED SECTION

REVISIONS	
NAME	DATE

ILLINOIS DEPARTMENT OF TRANSPORTATION

TYPICALS

FAP 34 (IL 97)

SECTION D-6 SHLDR

RUMBLE STRIPS 2008

MENARD, SANGAMON COUNTY

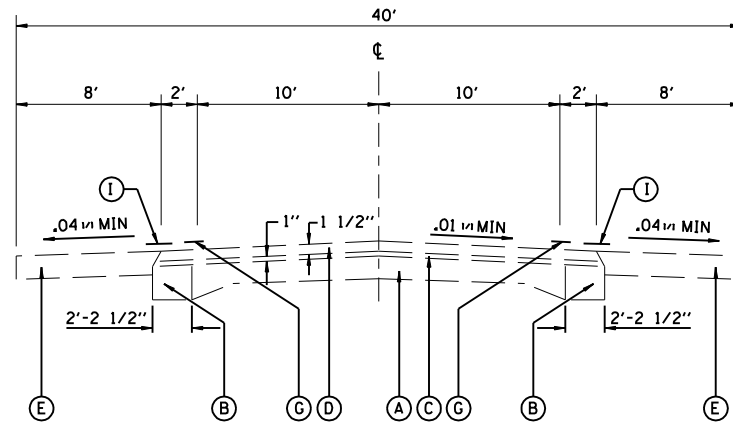
SCALE: VERT. / HORIZ.

DATE / DRAWN BY / CHECKED BY

F.A.P. RTE.	SECTION	COUNTY	TOTAL SHEETS	SHEET NO.
34	.	**	13	8

STA.	TO STA.
FED. ROAD DIST. NO.	ILLINOIS FED. AID PROJECT

- D-6 SHLDR RUMBLE STRIPS 2008
- MENARD, SANGAMON COUNTY



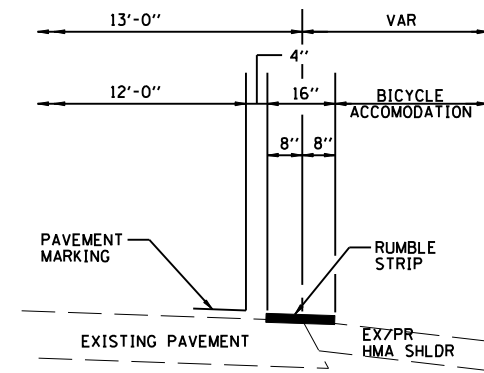
RT 111+62 TO 113+62
 113+62 TO 114+00
 243+68.15 (AH) TO 320+60
 337+89 TO 347+50
 RT 347+50 TO 348+25

"RUMBLE STRIP"
 TOWN OF SALIBURY
 OMISSION
 291+00 TO 308+00

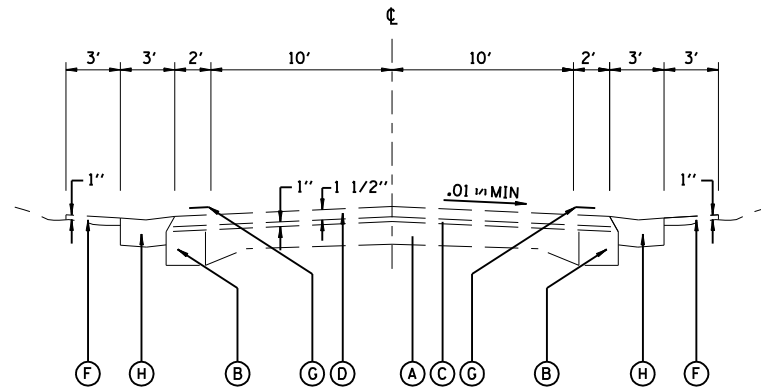
LEGEND

- (A) EX PCC PAVT (9'-6 1/2" - 9") & BIT CONC SURF
- (B) EX BIT CONC BASE CRSE WIDENING 9"
- (C) EX LEVELING BINDER MACHINE METHOD 1"
- (D) EX BIT CONC SURF CRSE MIX D CLASS 1 - 1 1/2"
- (E) EX BITUMINOUS SHOULDER 8"
- (F) EX AGGREGATE SHOULDERS, TYPE A
- (G) EX PAINT PAVEMENT MARKING - LINE 5"
- (H) EX CONCRETE GUTTER TY A (MODIFIED)
- (I) PROPOSED SHOULDER RUMBLE STRIP (SEE DETAIL)

RUMBLE STRIP DETAIL



OMIT SHOULDER RUMBLE STRIPS ACROSS
 STRUCTURES & SIDE ROAD/ENTRANCES
 AND THROUGH SALISBURY



STA 291+64 TO 300+68 LT
 291+00 TO 304+00 RT

STATION EQUATION 296+12.5 BK = 290+76.1 AHD

• SEE CURVE DATA FOR SE STA 291±00 TO 296±00

REVISIONS	
NAME	DATE

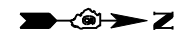
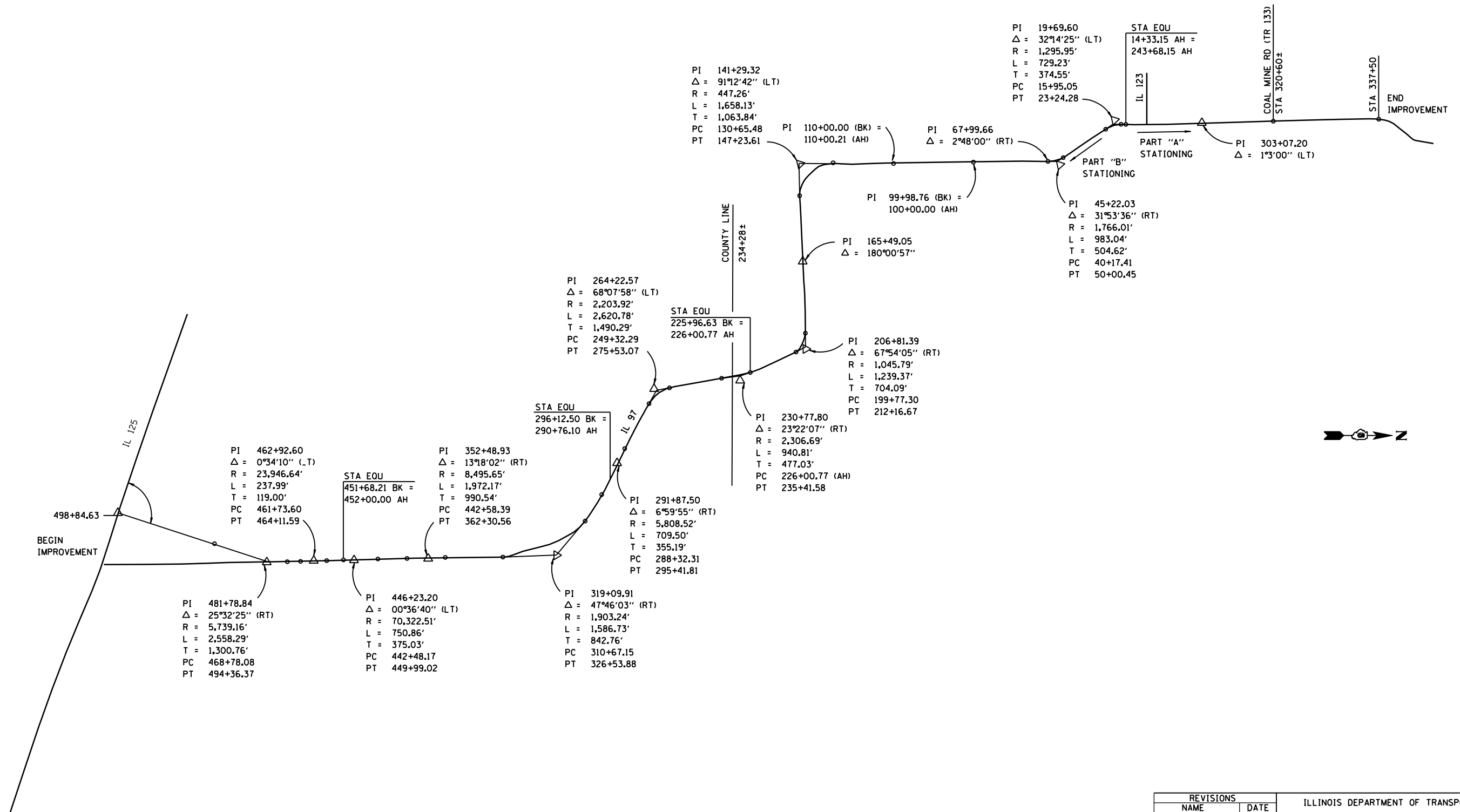
ILLINOIS DEPARTMENT OF TRANSPORTATION
 TYPICALS
 FAP 34 (IL 97)
 SECTION D-6 SHLDR
 RUMBLE STRIPS 2008
 MENARD, SANGAMON COUNTY

SCALE: VERT. _____
 HORIZ. _____
 DATE _____ DRAWN BY _____
 CHECKED BY _____

F.A.P. RTE.	SECTION	COUNTY	TOTAL SHEETS	SHEET NO.
34	.	**	13	9

STA.	TO STA.
FED. ROAD DIST. NO.	ILLINOIS FED. AID PROJECT

- D-6 SHLDR RUMBLE STRIPS 2008
- ** MENARD, SANGAMON COUNTY



PLOT DATE = Aug-15-2007 10:02:20AM
 FILE NAME = c:\p\projects\610507\lmedia.dgn
 PLOT SCALE = 1/8"=1'-0" / IN.
 USER NAME = laughlin-1

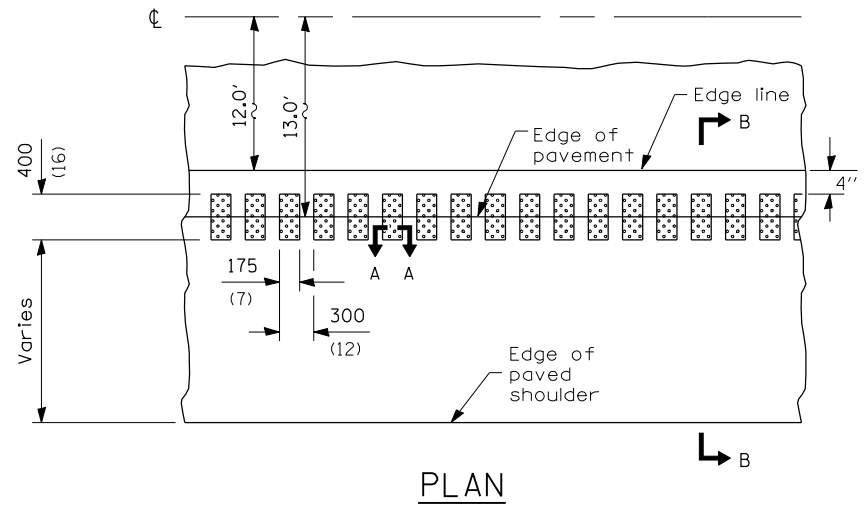
REVISIONS	
NAME	DATE

ILLINOIS DEPARTMENT OF TRANSPORTATION
LINE DIAGRAM
 FAP 34 (IL 97)
 SECTION D-6 SHLDR
 RUMBLE STRIPS 2008
 MENARD, SANGAMON COUNTY

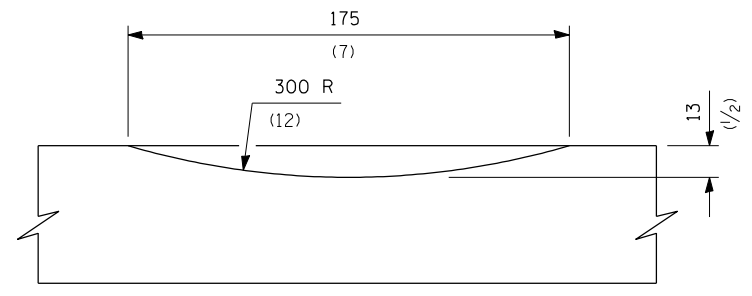
SCALE: VERT. DRAWN BY
 HORIZ. CHECKED BY
 DATE

F.A.P. RTE.	SECTION	COUNTY	TOTAL SHEETS	SHEET NO.
34	.	..	13	10
STA.		TO STA.		
FED. ROAD DIST. NO.	ILLINOIS	FED. AID PROJECT		

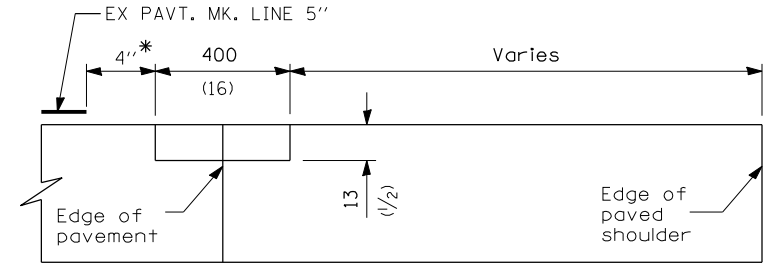
- D-6 SHLDR RUMBLE STRIPS 2008-2
- MENARD, SANGAMON COUNTIES



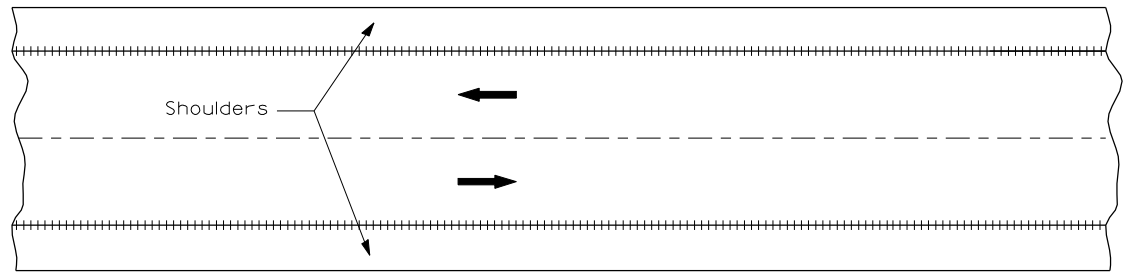
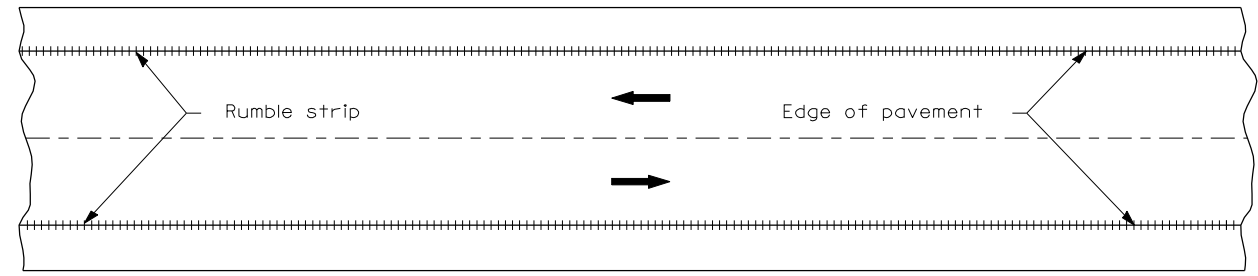
PLAN



SECTION A-A

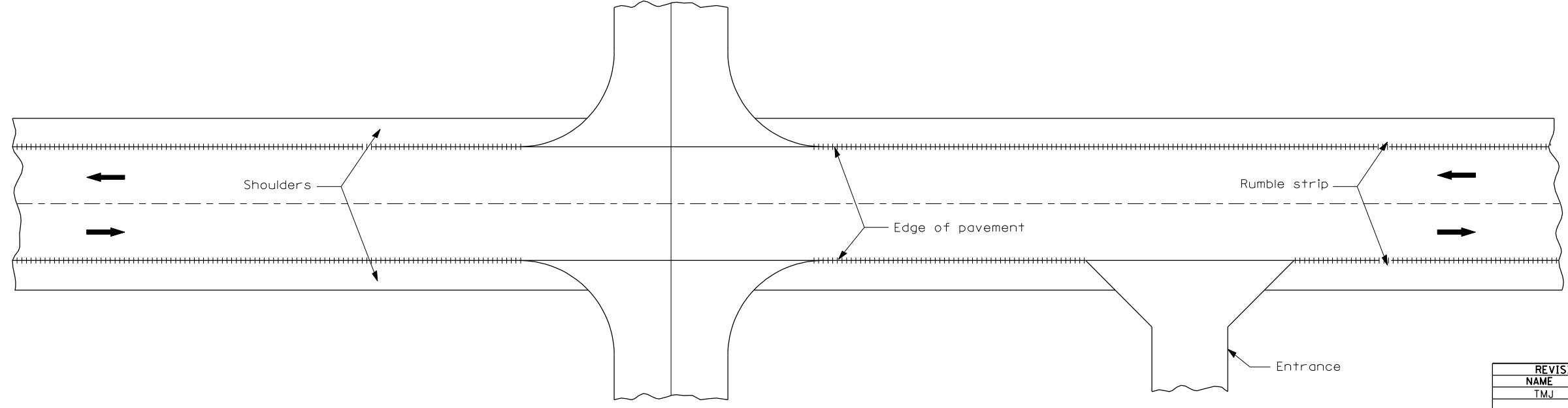


SECTION B-B



HALF PLAN
TYPICAL APPLICATION FOR RURAL AREAS

* = LATERAL DEVIATION SHALL NOT EXCEED ONE INCH IN 100 FEET.



HALF PLAN
TYPICAL APPLICATION AT SIDEROADS AND ENTRANCES

REVISIONS	
NAME	DATE
TMJ	07-07

ILLINOIS DEPARTMENT OF TRANSPORTATION

RUMBLE STRIPS DETAIL

SCALE: VERT. / HORIZ. / DATE JULY 5, 2007

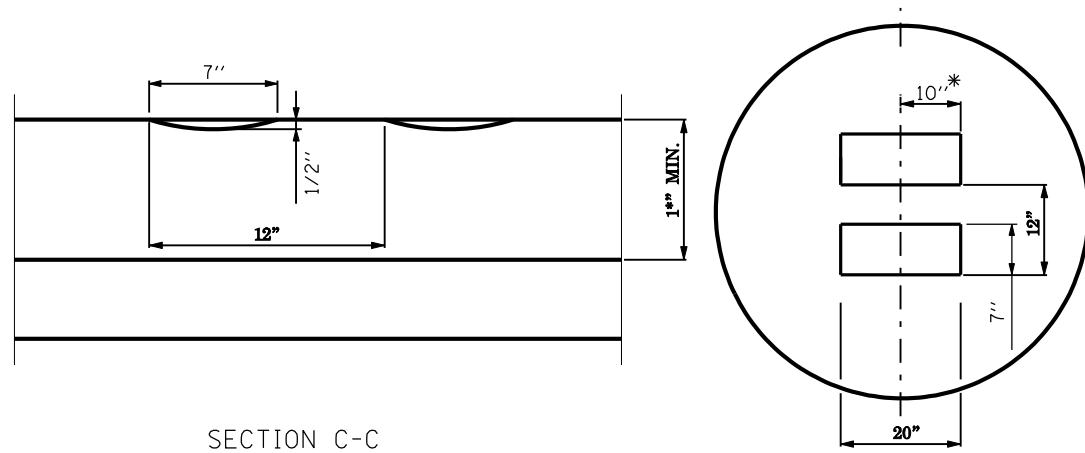
DRAWN BY JWC
CHECKED BY RSC

PLOT DATE = Aug-15-2007 10:02:23AM
FILE NAME = c:\p\projects\6610507\shdetail.dgn
PLOT SCALE = 42,352% / IN.
USER NAME = laughlin-1

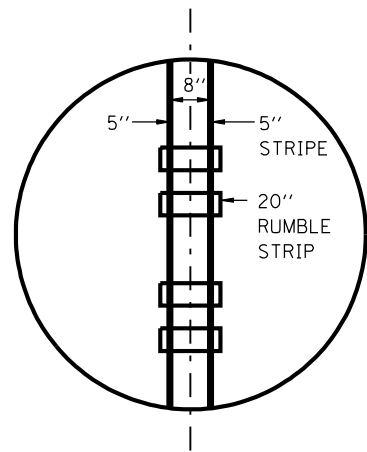
F.A.P. RTE.	SECTION	COUNTY	TOTAL SHEETS	SHEET NO.
34	.	**	13	11

STA.	TO STA.
FED. ROAD DIST. NO.	ILLINOIS FED. AID PROJECT

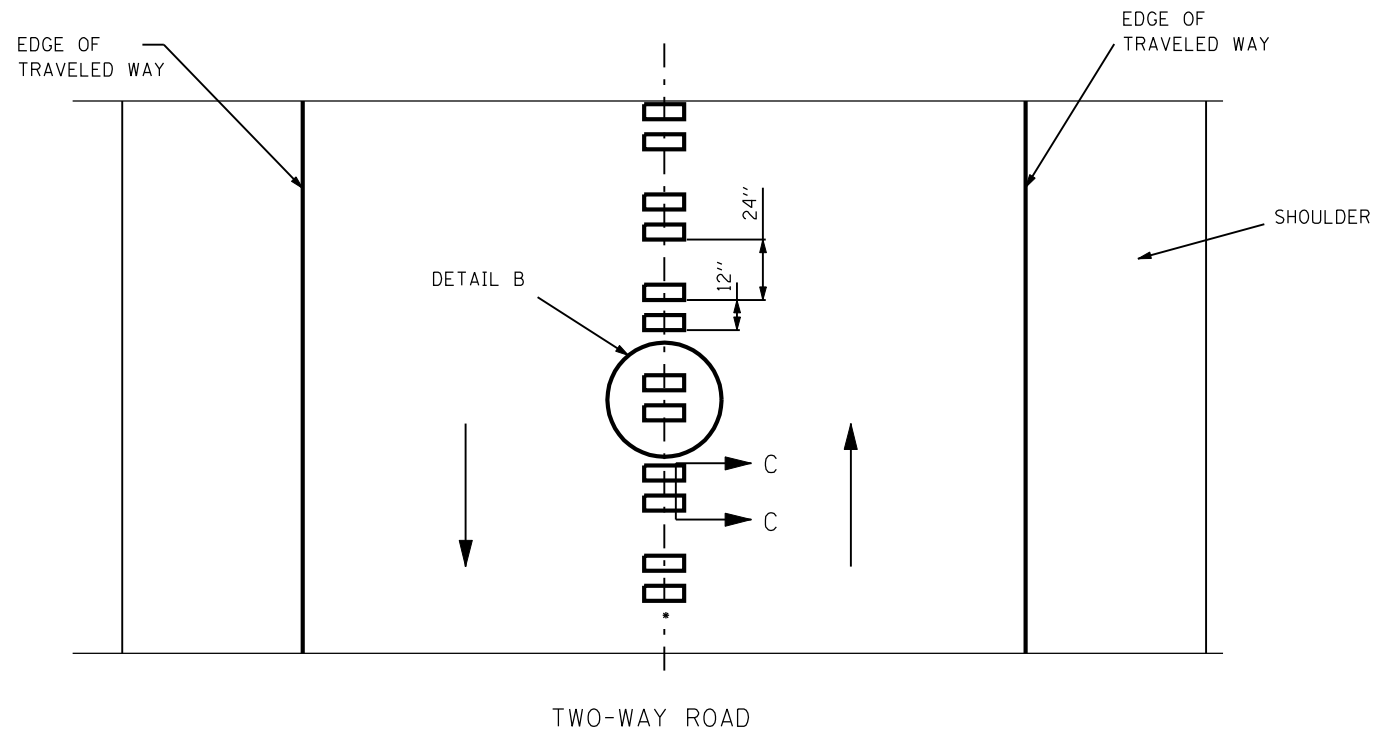
- D-6 SHLDR RUMBLE STRIPS 2008
- ** MENARD, SANGAMON



* = LATERAL DEVIATION SHALL NOT EXCEED ONE INCH IN 100 FEET.



NO PASSING ZONE
CENTERLINE STRIPING



GENERAL NOTES:

SKIP OVER EXISTING (4' GAP (2' ON EACH SIDE))
RAISED REFLECTIVE PAVEMENT MARKERS

RUMBLE STRIPS SHALL NOT BE PLACED ON BRIDGES.

ALL RUMBLE STRIPS SHALL BE MILLED.

CENTERLINE RUMBLE STRIPS SHALL BE CONTINUOUS THROUGH CONNECTIONS OF SIDEROADS WITH NO LEFT TURN LANES.

DISCONTINUE CENTERLINE RUMBLE STRIPS THROUGH THE LIMITS OF ALL LEFT TURN LANES, INCLUDING ANY LANE TAPER SECTIONS.

PLOT DATE = Aug-15-2007 10:02:27AM
FILE NAME = c:\p\projects\6810587\c1.rmb1.strips.dgn
PLOT SCALE = 211.7647 / IN.
USER NAME = laughlin-1

REVISIONS	
NAME	DATE

ILLINOIS DEPARTMENT OF TRANSPORTATION
RUMBLE STRIPS
CENTERLINE DETAIL

SCALE: VERT.
HORIZ.
DATE 02-01-2007

DRAWN BY
CHECKED BY

F.A.P. RTE.	SECTION	COUNTY	TOTAL SHEETS	SHEET NO.
34	*	**	13	13

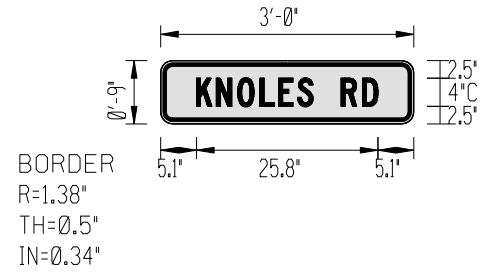
STA.	TO STA.

FED. ROAD DIST. NO. ILLINOIS FED. AID PROJECT

• D-6 SHLDR RUMBLE STRIPS 2008
 ** MENARD, SANGAMON

SIGN DETAIL

1:50



SIGN NUMBER	name
WIDTH x HGHT.	3'-0" x 0'-9"
BORDER WIDTH	0.5"
CORNER RADIUS	1.38"
MOUNTING	Ground
BACKGROUND	TYPE: Reflective
	COLOR: Yellow
LEGEND/BORDER	TYPE: Reflective
	COLOR: Black /Black

SYMBOL	X	Y	WID	HT

Panel Style: Warning-Bowtie.ssi
 Dimensions are in inches tenths

Letter locations are panel edge to lower left corner

LETTER POSITIONS (X)										LENGTH	SERIESIZE	
K	N	O	L	E	S		R	D				C4
5.1	7.9	11	14.1	16.8	19.5	21.7	25.7	28.7			25.8	

PLOT DATE : Aug 15 2007 10:09:37 AM
 FILE NAME : c:\projects\6810507\road name sign.dgn
 PLOT SCALE : 4.23524 / IN.
 USER NAME : laughlin-1

REVISIONS	
NAME	DATE

ILLINOIS DEPARTMENT OF TRANSPORTATION

ROAD SIGN DETAIL

SCALE: VERT.
 HORIZ.
 DATE

DRAWN BY
 CHECKED BY