

F.A.P. RTE.	SECTION	COUNTY	TOTAL SHEETS	SHEET NO.
752	*	FAYETTE	5	1

* D7 BEAM REPAIR 2008-1

D-97-002-08

STATE OF ILLINOIS
DEPARTMENT OF TRANSPORTATION
DIVISION OF HIGHWAYS

**PROPOSED
HIGHWAY PLANS**

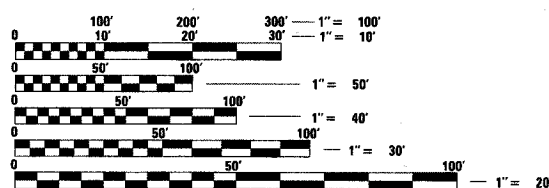
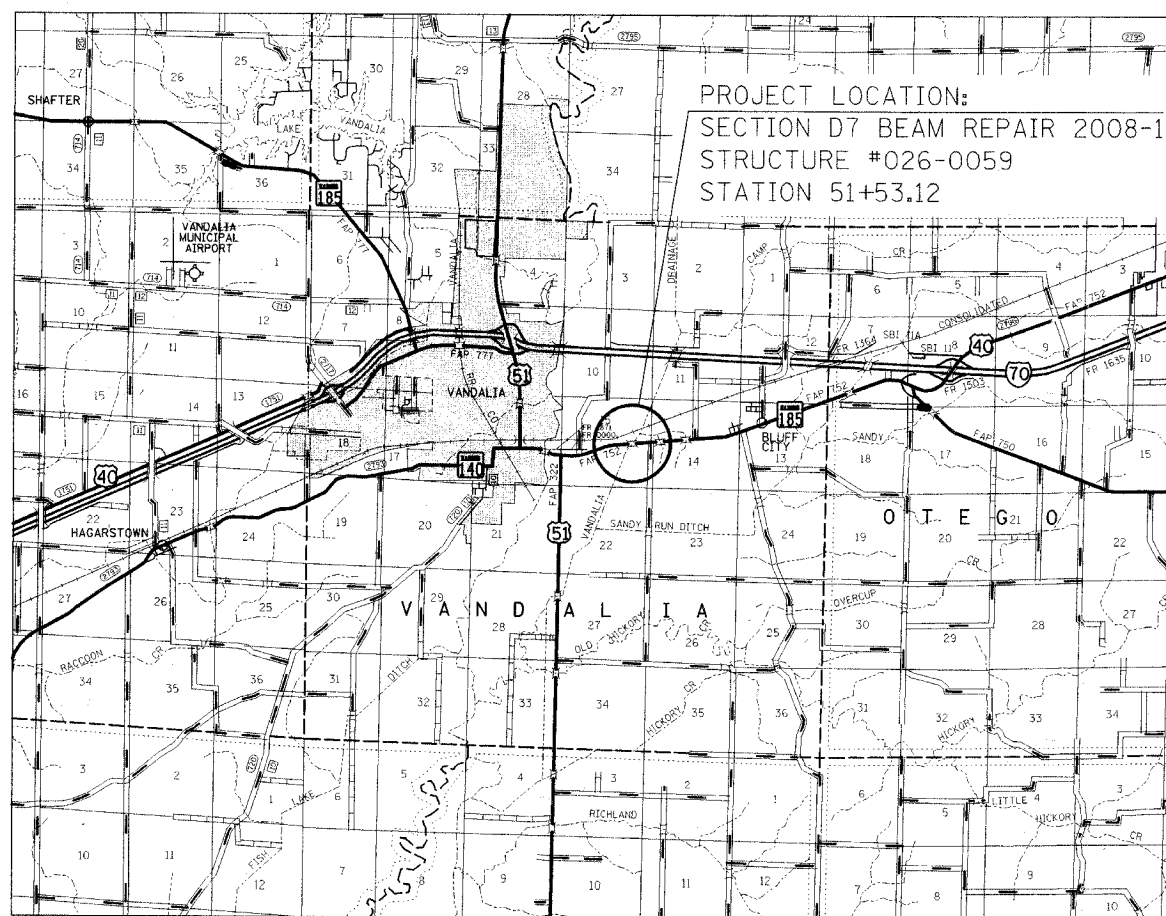
F.A.P. ROUTE 752 (US 40 / IL 185)
SECTION D7 BEAM REPAIR 2008-1
FAYETTE COUNTY

C-97-002-08

FOR INDEX OF SHEETS, SEE SHEET NO. 2



2005 ADT = 4050



FULL SIZE PLANS HAVE BEEN PREPARED USING STANDARD ENGINEERING SCALES. REDUCED SIZED PLANS WILL NOT CONFORM TO STANDARD SCALES. IN MAKING MEASUREMENTS ON REDUCED PLANS, THE ABOVE SCALES MAY BE USED.

J.U.L.I.E.
JOINT UTILITY LOCATION INFORMATION FOR EXCAVATION
1-800-892-0123

TOWNSHIP: VANDALIA

CONTRACT NO. 74283

STATE OF ILLINOIS
DEPARTMENT OF TRANSPORTATION
DIVISION OF HIGHWAYS

SUBMITTED August 13, 2007

Christina M. Reed
DEPUTY DIRECTOR OF HIGHWAYS, REGION ENGINEER

October 12, 2007
Eric E. Harrold
Interim ENGINEER OF DESIGN AND ENVIRONMENT

October 12, 2007
Melton R. Seay, P.E.
DIRECTOR OF HIGHWAYS, CHIEF ENGINEER

**PRINTED BY THE AUTHORITY
OF THE STATE OF ILLINOIS**

PROJECT ENGINEER : WILLIAM E. STANLEY
SQUAD LEADER : JENNIFER WENTHE
DESIGNER : JENNIFER WENTHE
TELEPHONE : 217/342-3951 EX. 361