

F.A.P. RTE.	SECTION	COUNTY	TOTAL SHEETS	SHEET NO.
752	*	FAYETTE	5	1

* D7 BEAM REPAIR 2008-1

D-97-002-08

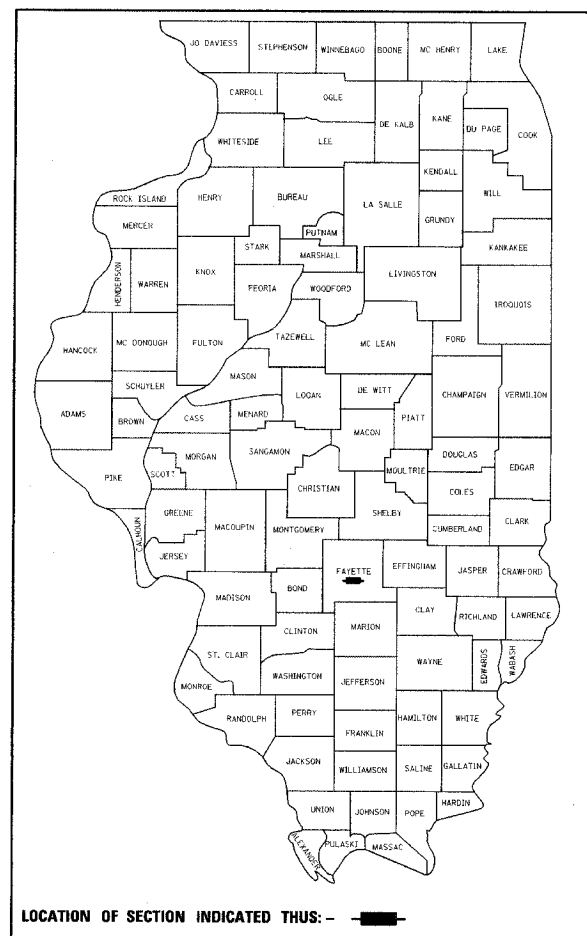
STATE OF ILLINOIS
DEPARTMENT OF TRANSPORTATION
DIVISION OF HIGHWAYS

**PROPOSED
HIGHWAY PLANS**

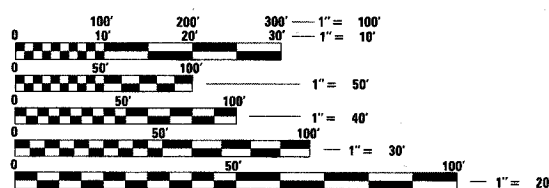
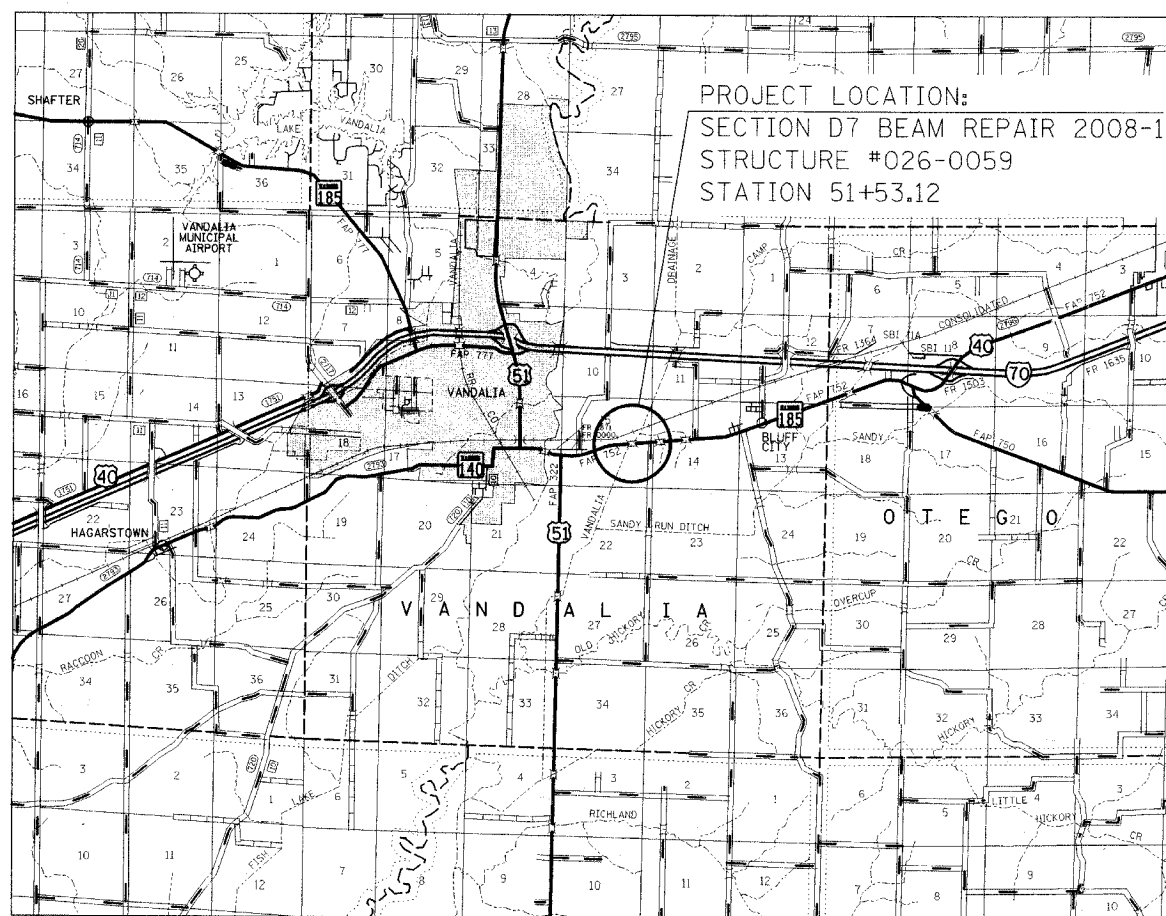
F.A.P. ROUTE 752 (US 40 / IL 185)
SECTION D7 BEAM REPAIR 2008-1
FAYETTE COUNTY

C-97-002-08

FOR INDEX OF SHEETS, SEE SHEET NO. 2



2005 ADT = 4050



FULL SIZE PLANS HAVE BEEN PREPARED USING STANDARD ENGINEERING SCALES. REDUCED SIZED PLANS WILL NOT CONFORM TO STANDARD SCALES. IN MAKING MEASUREMENTS ON REDUCED PLANS, THE ABOVE SCALES MAY BE USED.

J.U.L.I.E.
JOINT UTILITY LOCATION INFORMATION FOR EXCAVATION
1-800-892-0123

TOWNSHIP: VANDALIA

CONTRACT NO. 74283

STATE OF ILLINOIS
DEPARTMENT OF TRANSPORTATION
DIVISION OF HIGHWAYS

SUBMITTED August 13, 2007

Christina M. Reed
DEPUTY DIRECTOR OF HIGHWAYS, REGION ENGINEER

October 12, 2007
Eric E. Harrold
Interim ENGINEER OF DESIGN AND ENVIRONMENT

October 12, 2007
Melton R. Sisco, P.E.
DIRECTOR OF HIGHWAYS, CHIEF ENGINEER

**PRINTED BY THE AUTHORITY
OF THE STATE OF ILLINOIS**

PROJECT ENGINEER : WILLIAM E. STANLEY
SQUAD LEADER : JENNIFER WENTHE
DESIGNER : JENNIFER WENTHE
TELEPHONE : 217/342-3951 EX. 361

F.A.P. RTE.	SECTION	COUNTY	TOTAL SHEETS	SHEET NO.
752	•	FAYETTE	5	2
STA.		TO STA.		
FED. ROAD DIST. NO.	ILLINOIS	FED. AID PROJECT		

• 07 BEAM REPAIR 2008-1

SUMMARY OF QUANTITIES			100% STATE CONSTRUCTION TYPE CODE	
CODE NO	ITEM	UNIT	TOTAL QUANTITIES	SFTY-2A
50500405	FURNISHING AND ERECTING STRUCTURAL STEEL	POUND	42810	42810
67100100	MOBILIZATION	L SUM	1	1
70100450	TRAFFIC CONTROL AND PROTECTION, STANDARD 701201	L SUM	1	1

INDEX OF SHEETS

SHEET NO.	ITEM
1	COVER SHEET
2	SUMMARY OF QUANTITIES, INDEX OF SHEETS, AND GENERAL NOTES
3	TYPICAL SECTION & PLAN VIEW
4-5	BRIDGE PLANS

THE FOLLOWING STANDARDS ARE A PART OF THESE PLANS AND ARE INCLUDED AFTER SHEET NO. 5:

STD. NO.	DESCRIPTION
000001-04	STANDARD SYMBOLS, ABBREVIATIONS AND PATTERNS
701001-01	OFF-RD OPERATIONS, 2L, 2W MORE THAN 15' AWAY
701006-02	OFF-RD OPERATIONS, 2L, 2W, 15' TO 24" FROM PAVEMENT EDGE
701201-02	LANE CLOSURE, 2L, 2W, DAY ONLY, FOR SPEEDS > 45 MPH
702001-06	TRAFFIC CONTROL DEVICES

GENERAL NOTES

THIS SECTION SHALL BE CONSTRUCTED IN ACCORDANCE WITH THE PLANS; THE "STANDARD SPECIFICATIONS FOR ROAD AND BRIDGE CONSTRUCTION" ADOPTED JANUARY 1, 2007; AND THE SPECIAL PROVISIONS INCLUDED IN THE PROPOSAL.

THE WORK INCLUDED IN THIS SECTION CONSISTS OF REHABILITATING STRUCTURE NUMBER 026-0059 OVER CAMP CREEK LOCATED 0.8 MILES EAST OF US ROUTE 51. DECK BEAMS SHALL BE BRACED TO MAINTAIN/IMPROVE THE LOAD CAPACITY.

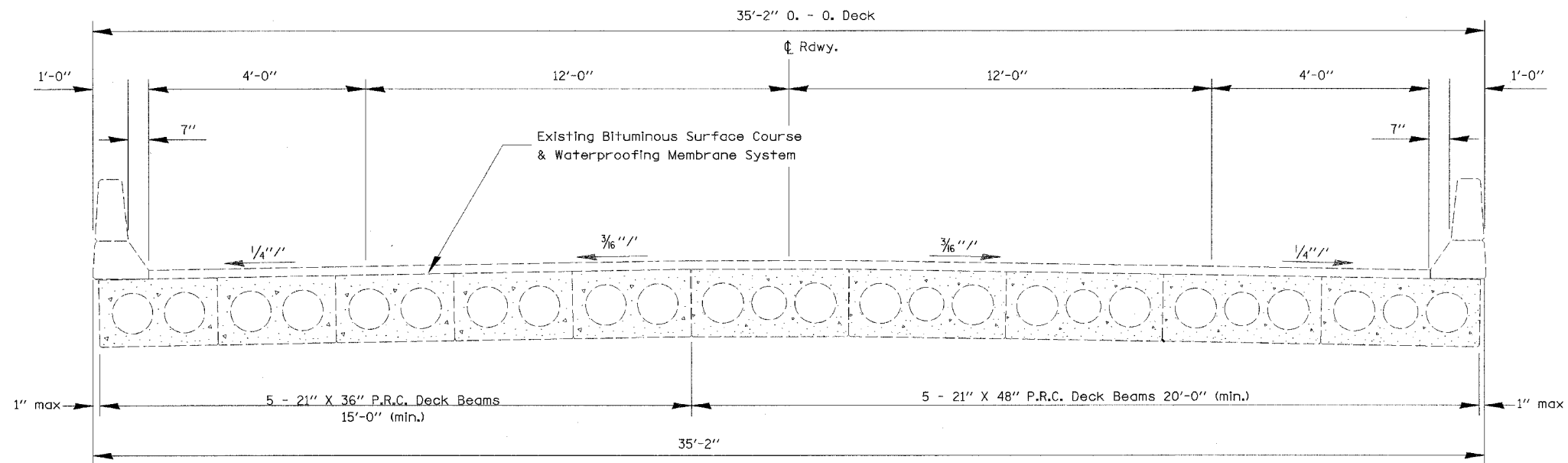
PLAN DIMENSIONS AND DETAILS RELATIVE TO THE EXISTING STRUCTURE HAVE BEEN TAKEN FROM EXISTING PLANS AND ARE SUBJECT TO NOMINAL CONSTRUCTION VARIATIONS. IT SHALL BE THE CONTRACTOR RESPONSIBILITY TO VERIFY SUCH DIMENSIONS AND DETAILS IN THE FIELD AND MAKE NECESSARY APPROVED ADJUSTMENTS PRIOR TO THE CONSTRUCTION OR ORDERING OF MATERIAL. SUCH VARIATIONS SHALL NOT BE CAUSE FOR ADDITIONAL COMPENSATION OR A CHANGE IN THE SCOPE OF THE WORK. THE CONTRACTOR WILL BE PAID FOR THE QUANTITY ACTUALLY FURNISHED AT THE UNIT PRICE BID FOR THE WORK.

REVISIONS		ILLINOIS DEPARTMENT OF TRANSPORTATION
NAME	DATE	
		<p>SUMMARY OF QUANTITIES, INDEX OF SHEETS AND GENERAL NOTES</p> <p>SCALE: VERT. _____ HORIZ. _____</p> <p>DATE _____ DRAWN BY _____ CHECKED BY _____</p>

Rev.

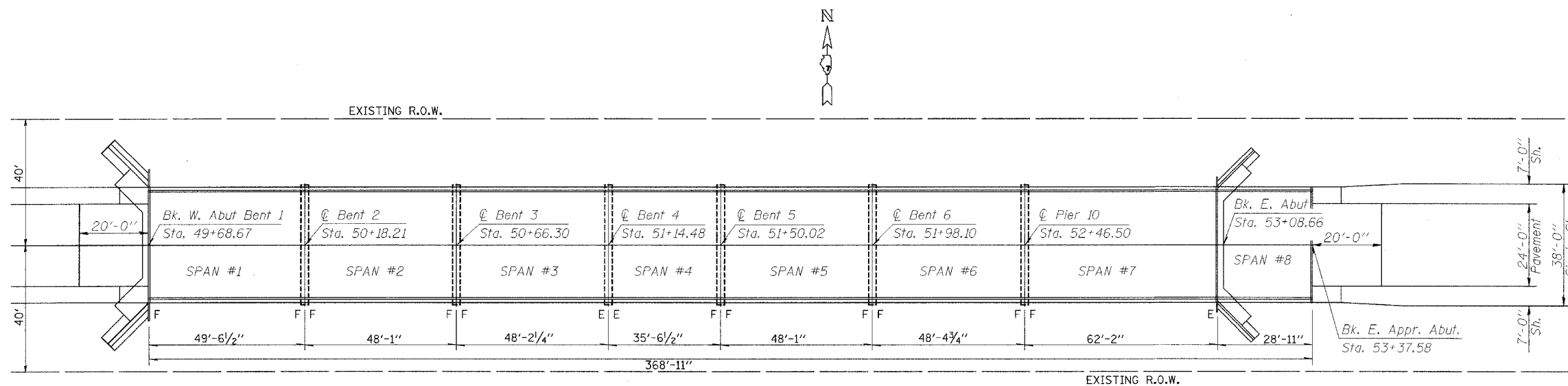
F.A.P. RTE.	SECTION	COUNTY	TOTAL SHEETS	SHEET NO.
752	*	FAYETTE	5	3
STA.		TO STA.		
FED. ROAD DIST. NO.	ILLINOIS	FED. AID PROJECT		

• 07 BEAM REPAIR 2008-1



TYPICAL SECTION

SPANS 1-6
(LOOKING EAST)



PLAN

REVISIONS	
NAME	DATE

ILLINOIS DEPARTMENT OF TRANSPORTATION

**TYPICAL SECTION
AND
PLAN VIEW**

SCALE: VERT.
HORIZ.
DATE

DRAWN BY
CHECKED BY

STATE OF ILLINOIS
DEPARTMENT OF TRANSPORTATION

ROUTE NO.	SECTION	COUNTY	SHEETS	SHEET	SHEET NO. 1
FA 752		Fayette	5	4	2 SHEETS
FED. ROAD DIST. NO. 7	ILLINOIS	FED. AID PROJECT			

Contract Number: 74283

GENERAL NOTES

All structural steel shall conform to AASHTO Classification M-270 Gr. 36, unless otherwise noted.
Plan dimensions and details relative to existing plans are subject to routine variations. The Contractor shall field verify existing dimensions and details affecting new construction and make necessary approved adjustments prior to construction or ordering of materials. Such variations shall not be cause for additional compensation for a change in scope of the work, however, the Contractor will be paid for the quantity actually furnished based upon the unit price bid for the work.

See Section 584 of the Standard Specifications for Epoxy Grouting of Threaded Rods.

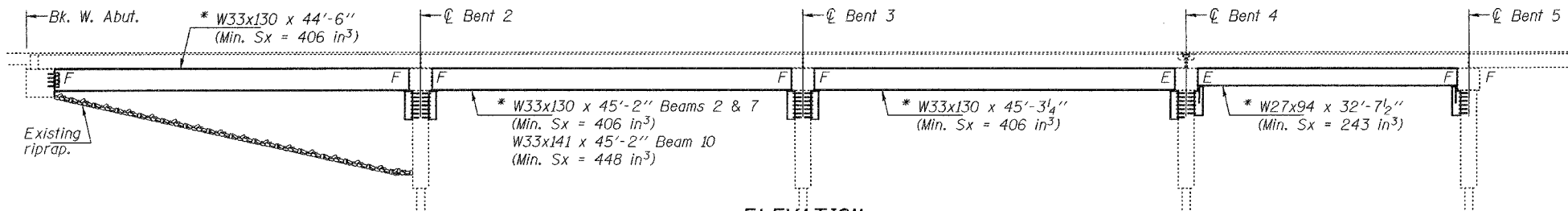
The cost of epoxy grouting threaded rods shall be included with Furnishing and Erecting Structural Steel.

The Contractor has the option of using used steel. See special provisions.

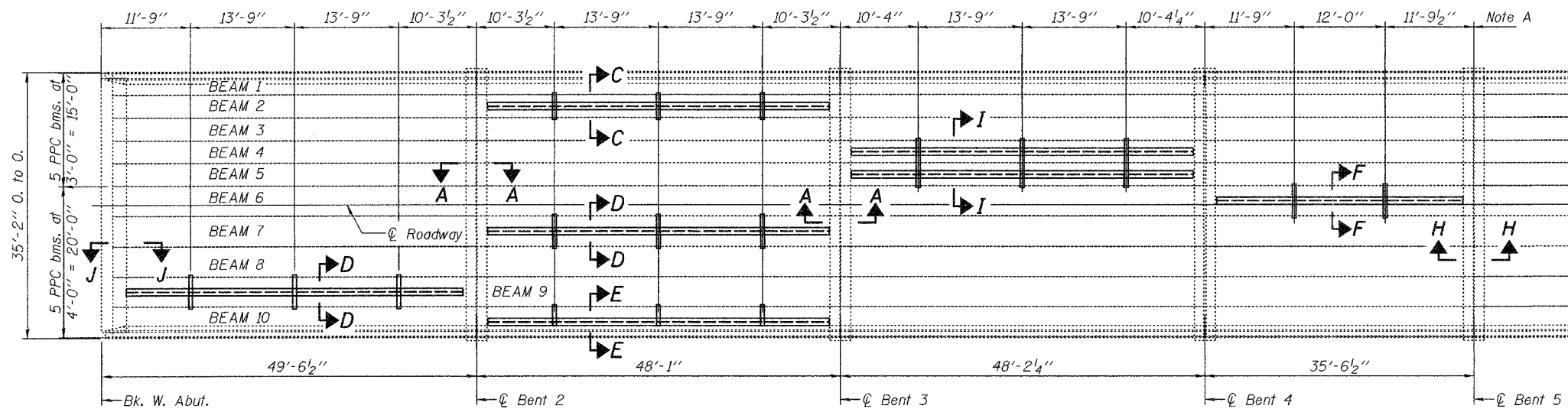
The contractor is advised that the existing PPC Deck Beams are in a deteriorated condition with reduced load carrying capacity. It is the contractor's responsibility to account for the condition of the beams when developing construction procedures.

If the contractor's procedure for placement of beams involves placement of cranes or other heavy equipment on the bridge, a detailed procedure shall be submitted to the Engineer for approval. The procedure shall include calculations, prepared and sealed by an Illinois Licensed Structural Engineer, verifying that the equipment and procedure used will not overstress the existing beams. To distribute load to multiple beams and protect the existing surface, in all cases a double layer mat of heavy timbers shall be used at all times under crane tracks or wheels and any outriggers in the down position. If necessary, shims shall be used under the crane mat to ensure uniform contact with the underlying beams.

* Contractor is to verify beam length prior to ordering material. Other sections meeting the section modulus requirements shown may be allowed subject to approval by the Bureau of Bridges and Structures, however, no additional payment will be allowed if the contractor chooses a heavier steel section than the one specified in the plans. Maximum girder depth = 36", except Span 1, maximum girder depth = 33".



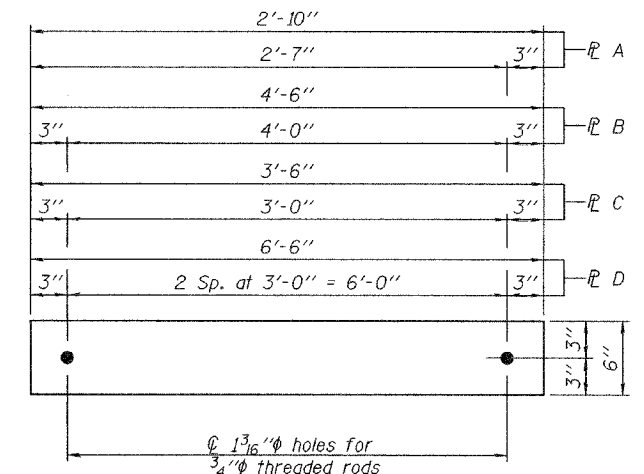
ELEVATION



PLAN

Note A:
⊘ Transverse tie plates. Place additional shims at midpoints between tie plates. Securely weld shims to top flange of support beam. Min. shim size is 6" x flange width.

For Sections A-A thru J-J, see sheet 2 of 2.

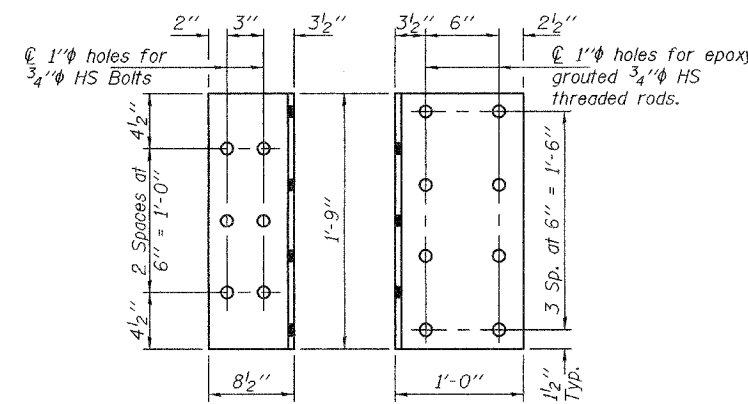


TRANSVERSE TIE R'S

- R A 1/2" x 2'-10" x 6" (3 Req'd)
- R B 1/2" x 4'-6" x 6" (8 Req'd)
- R C 1/2" x 3'-0" x 6" (3 Req'd)
- R D 1/2" x 6'-6" x 6" (3 Req'd)

TOTAL BILL OF MATERIAL

ITEM	UNIT	QUANTITY
Furnishing and Erecting Structural Steel	Pound	42810



BENT P E

R 1/2" x 1'-8" x 1'-9" (2 Req'd)

DESIGNED	Victor H. Veliz
CHECKED	[Signature]
DRAWN	baliva
CHECKED	AJB VHV

OCTOBER 9, 2007
EXAMINED [Signature]
PASSED [Signature]



Expires: November 30, 2008

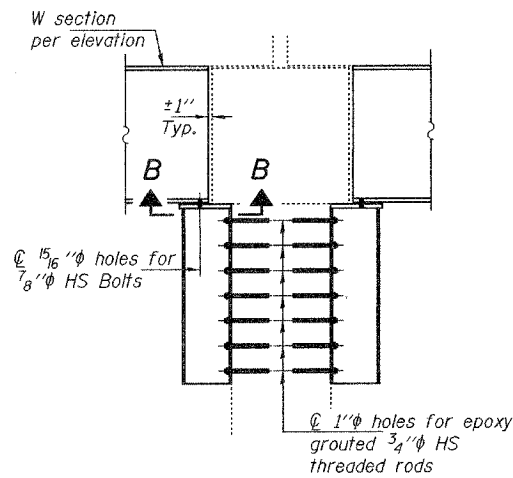
PLAN AND ELEVATION
FA 752
FAYETTE COUNTY
SN 026-0059

STATE OF ILLINOIS
DEPARTMENT OF TRANSPORTATION

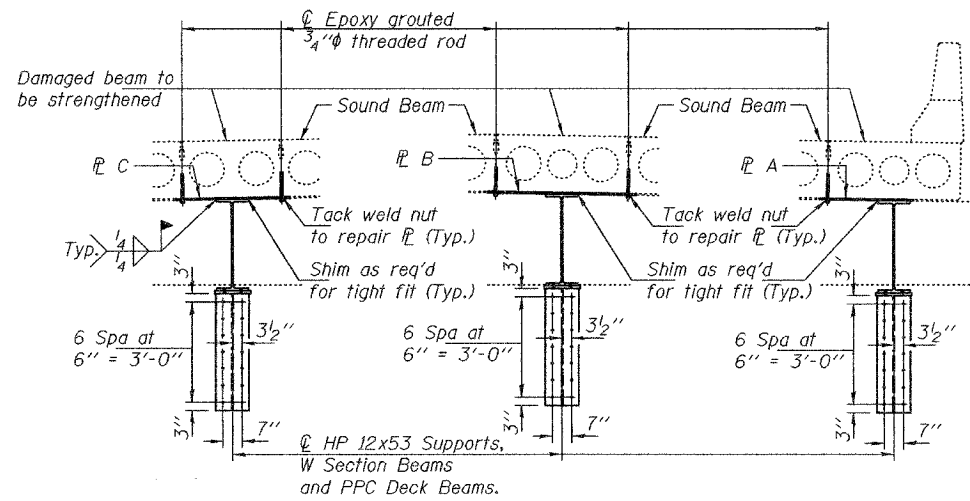
ROUTE NO.	SECTION	COUNTY	SHEET NO.	SHEET
FA 752		Fayette	5	5
FED. ROAD DIST. NO. 7				
ILLINOIS				
FED. AID PROJECT-				

Contract Number: 74283

SHEET NO. 2
2 SHEETS



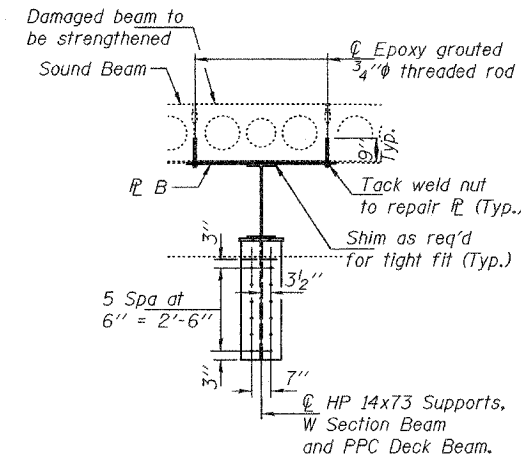
SECTION A-A



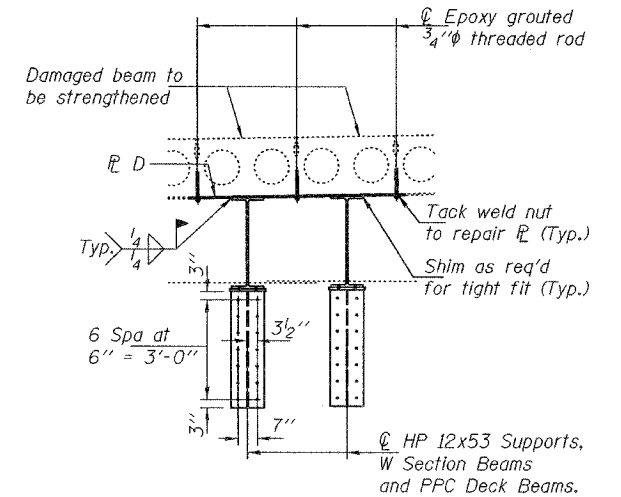
SECTION C-C

SECTION D-D

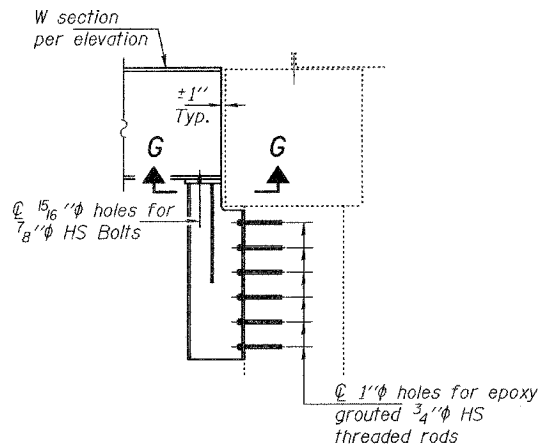
SECTION E-E



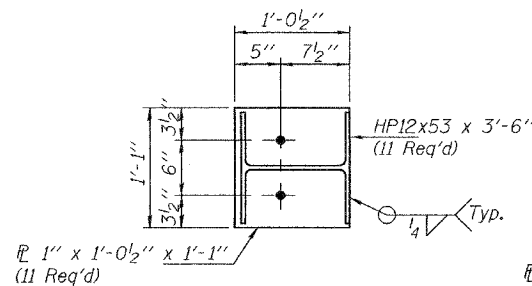
SECTION F-F



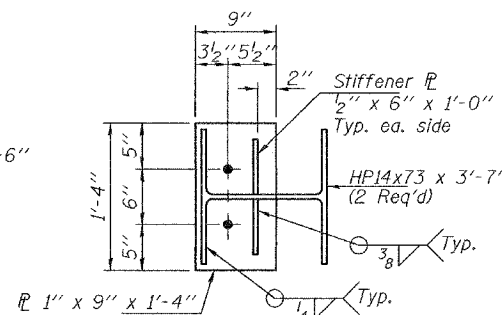
SECTION I-I



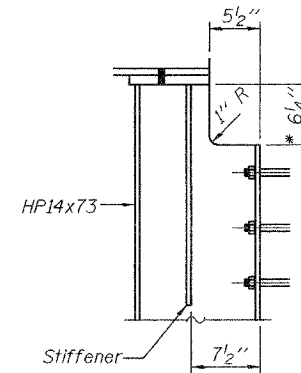
SECTION H-H



SECTION B-B

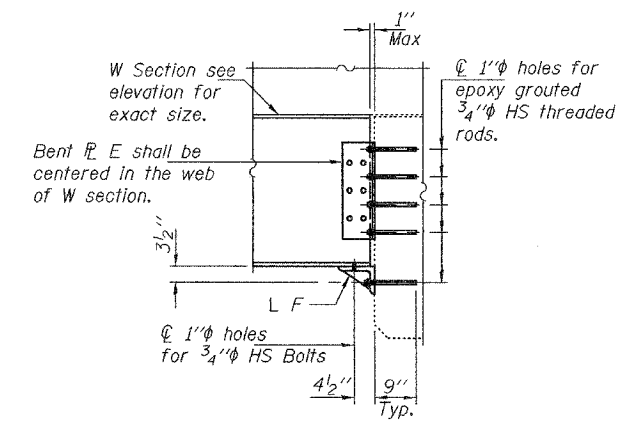


SECTION G-G

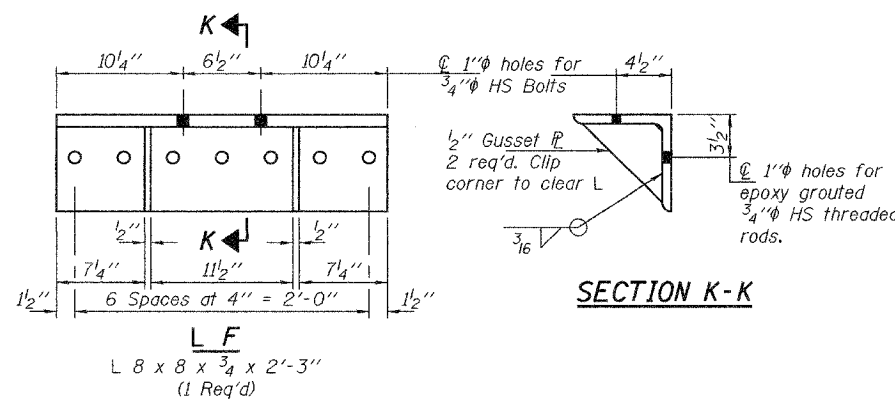


NOTCH AND STIFFENER DETAIL

* This dimension can be reduced if existing field conditions allow it.



SECTION J-J



SECTION K-K

DESIGNED	VHV
CHECKED	AJB
DRAWN	baliva
CHECKED	VHV AJB

OCTOBER 9, 2007

EXAMINED *Carl P. ...*
ENGINEER OF STRUCTURAL SERVICES

PASSED *Ralph E. Anderson*
ENGINEER OF BRIDGES AND STRUCTURES

REPAIR DETAILS
FA 752
FAYETTE COUNTY
SN 026-0059