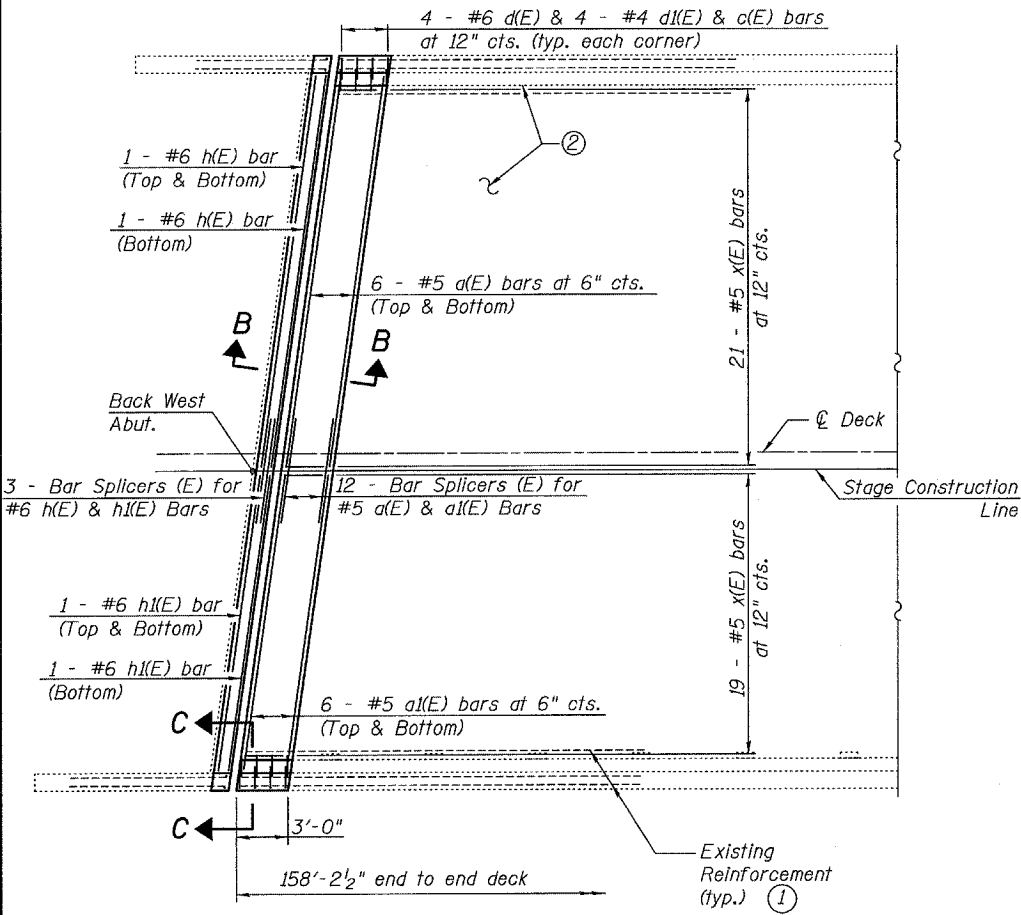


STATE OF ILLINOIS
DEPARTMENT OF TRANSPORTATION

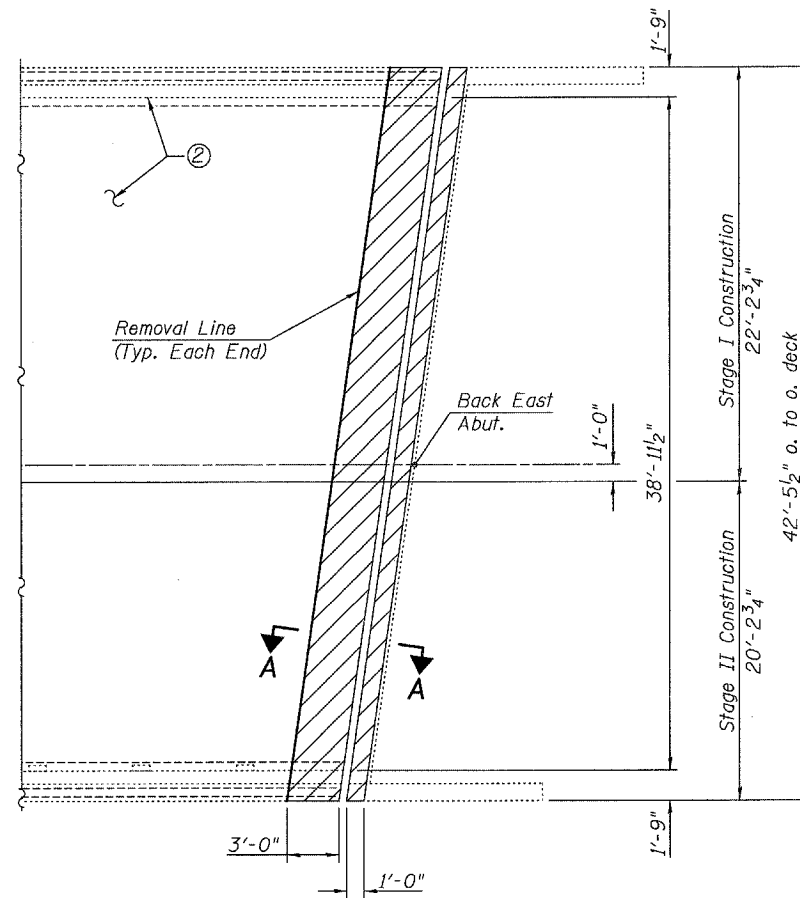
ROUTE NO. FAI 64	SECTION 95- 6VB-1	COUNTY WASHINGTON	TOTAL SHEETS 83	SHEET NO. 53	SHEET NO. 3 7 SHEETS
FED. ROAD DIST. NO. 7		ILLINOIS	FED. AID PROJECT		

Contract #76A39



NEW CONSTRUCTION
(Typical Each End of Deck)

PLAN
(Eastbound shown - Westbound similar)



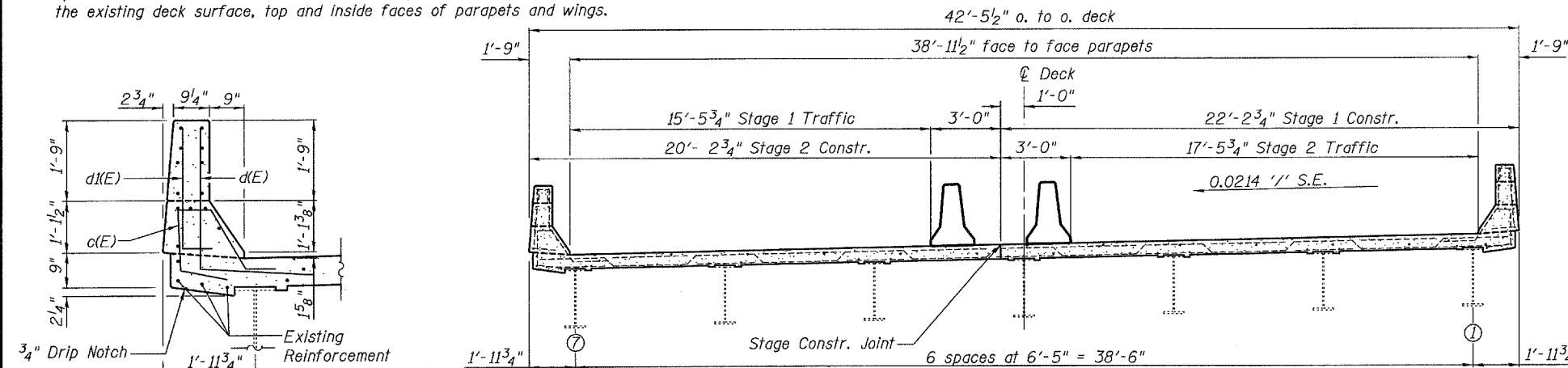
CONCRETE REMOVAL
(Typical Each End of Deck)

Indicates Limits of Concrete Removal

Notes:

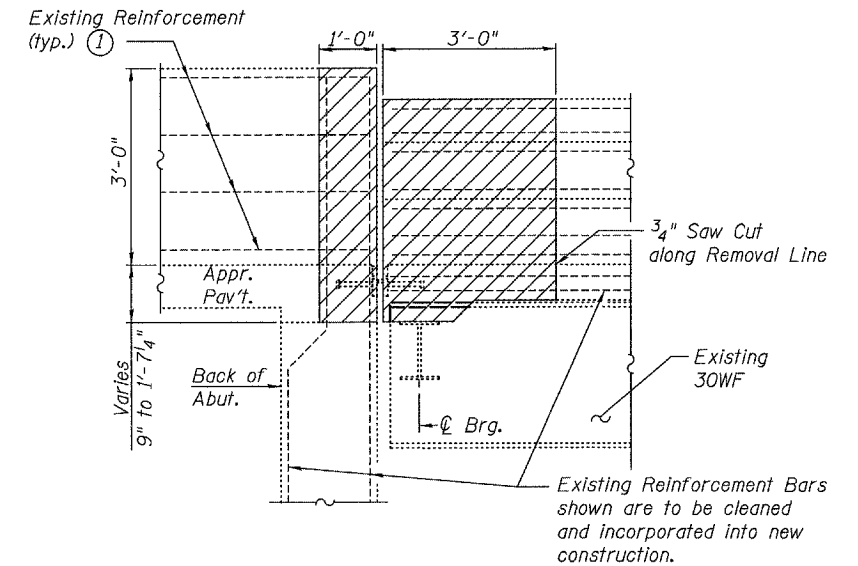
① Existing longitudinal reinforcement bars projecting from the deck and parapets are to remain in place. The existing reinforcement shall be cleaned, straightened and incorporated into the new construction. Cut the existing reinforcement as required so that it will end 2" from the edge of the new deck. Any reinforcement bars damaged during concrete removal shall be replaced with an approved bar splicer or anchorage system. Cost Included with Concrete Removal.

② Protective Coat shall be applied to the entire deck surface and as specified in Article 503.19 of the Standard Specifications, which includes the existing deck surface, top and inside faces of parapets and wings.



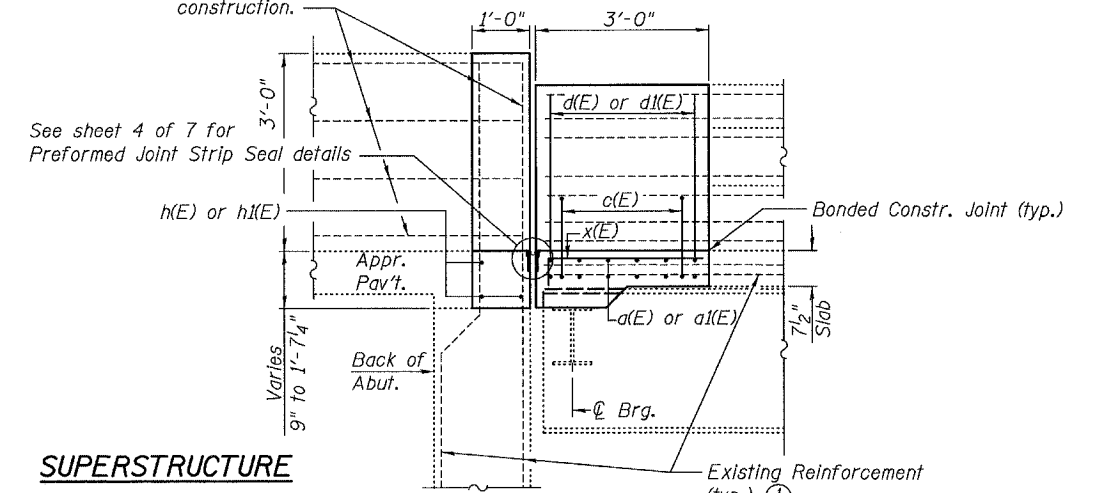
CROSS SECTION AT END OF DECK
(Looking West)

Note:
Staging is for information only. Coordinate with roadway staging.



SECTION A-A

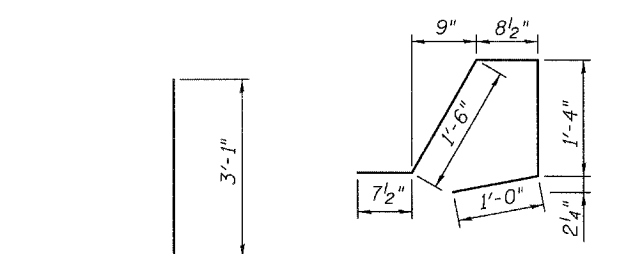
Existing Reinforcement Bars shown are to be cleaned and incorporated into new construction.



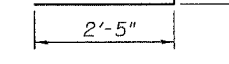
SECTION B-B

**SUPERSTRUCTURE
BILL OF MATERIAL**
(One Structure)

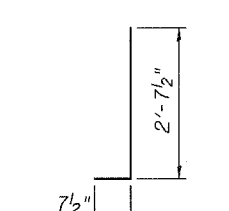
Bar	No.	Size	Length	Shape
a(E)	24	#5	21'-7"	—
a(E)	24	#5	19'-7"	—
c(E)	16	#4	5'-2"	⌋
d(E)	16	#6	5'-6"	⌋
d(E)	16	#4	3'-3"	⌋
h(E)	6	#6	20'-5"	—
h(E)	6	#6	18'-5"	—
x(E)	80	#5	3'-1"	—
Reinforcement Bars, Epoxy Coated		Pound	1,860	
Concrete Removal		Cu. Yd.	11.2	
Concrete Superstructure		Cu. Yd.	11.2	
Protective Coat		Sq. Yd.	848	



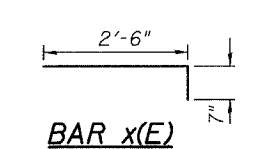
BAR c(E)



BAR d(E)



BAR d(E)



BAR x(E)

EXPANSION JOINT REPAIR
FAI 64 OVER
CNIC RAILROAD
FAI ROUTE 64 SECTION 95-6VB-1
WASHINGTON COUNTY
STATION 3263+73.50
STRUCTURE NO. 095-0061 (EB)
STRUCTURE NO. 095-0062 (WB)