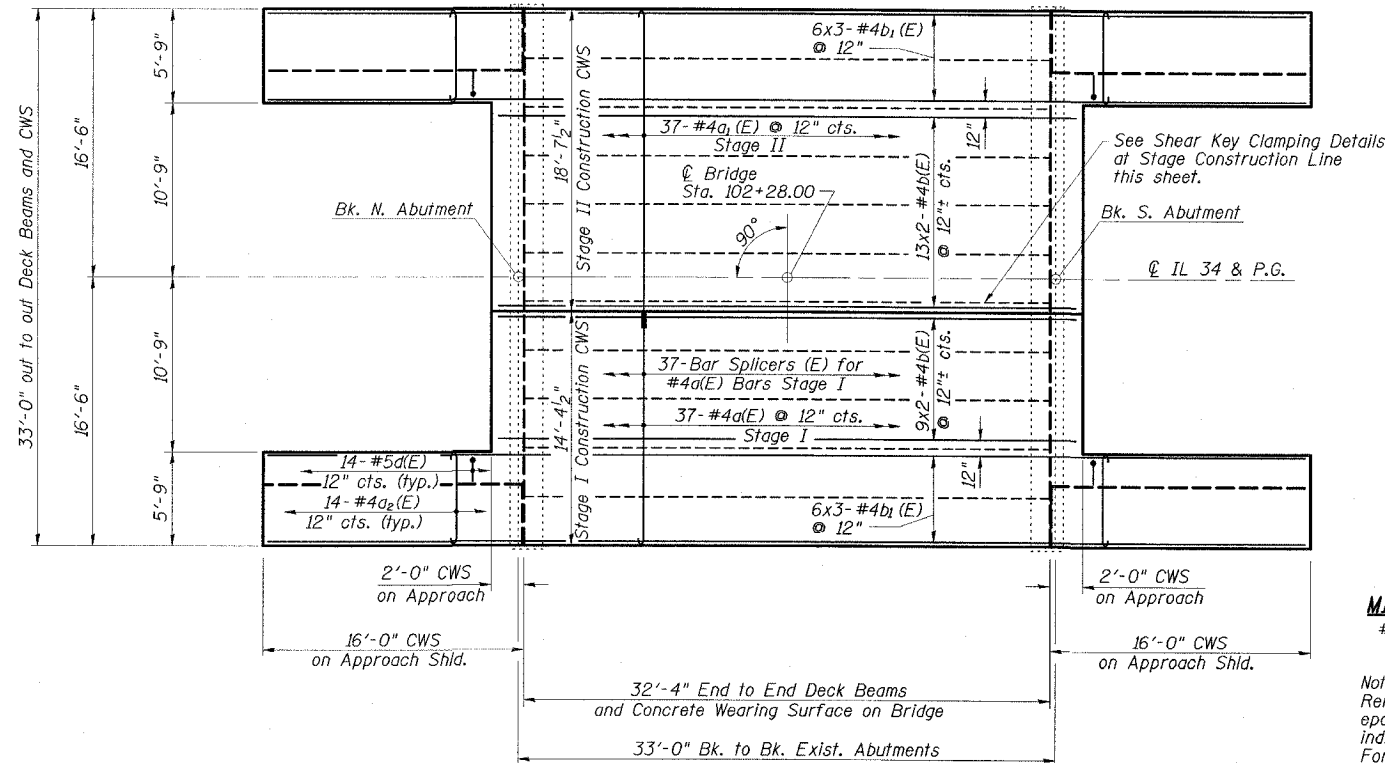


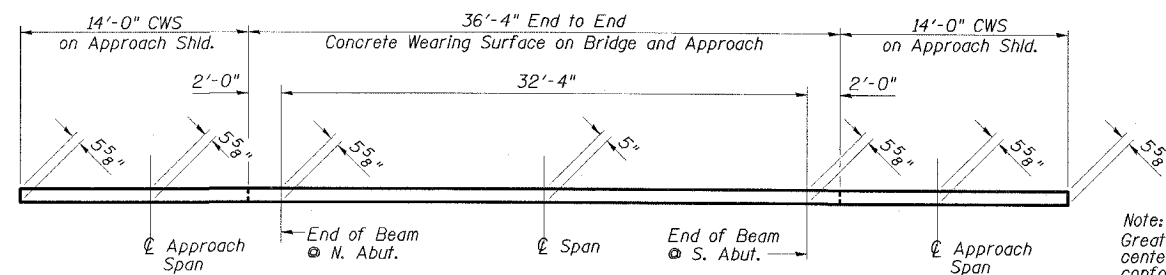
STATE OF ILLINOIS  
DEPARTMENT OF TRANSPORTATION

ROUTE NO.	SECTION	COUNTY	DATE	SHEET	SHEET NO. 5 13 SHEETS
FAP 132	1BR-1	SALINE	114	27	
FED. ROAD DIST. NO.	ILLINOIS	FED. AID PROJECT-			

78010



PLAN - WEARING SURFACE



REINFORCED CONCRETE WEARING SURFACE PROFILE  
(At edge of bridge deck)

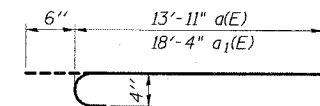
**MIN. BAR LAP**  
#4 bar = 1'-8"

Note:  
Reinforcement bars designated (E) shall be epoxy coated. Bars indicated thus 14x2-#4 etc. indicates 14 lines of bars with 2 lengths per line. For remainder of superstructure details, see drawings 6 and 8 of 13.

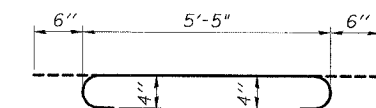
Note:  
Greater thickness is required at centerline of superstructure to conform to cross section slopes shown on Dwg. 6 of 13.

CONCRETE WEARING SURFACE  
BILL OF MATERIAL

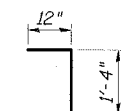
Bar	No.	Size	Length	Shape	
a(E)	37	#4	14'-5"	┌	
a1(E)	37	#4	18'-10"	┌	
a2(E)	56	#4	6'-5"	┌	
b(E)	44	#4	18'-10"	┌	
b1(E)	36	#4	22'-6"	┌	
d(E)	56	#5	2'-4"	┌	
Reinforcement Bars, Epoxy Coated				Pound	2300
Concrete Wearing Surface, 5"				Sq. Yd.	169
Bridge Deck Grooving				Sq. Yd.	169
Bar Splicers				Each	37
Protective Coat				Sq. Yd.	169



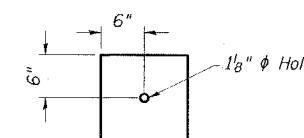
BARS a(E) & a1(E)



BAR a2(E)

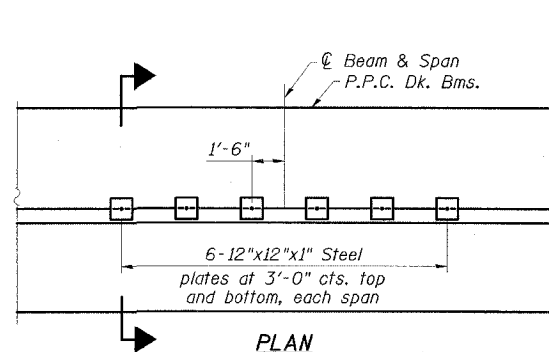


BAR d(E)

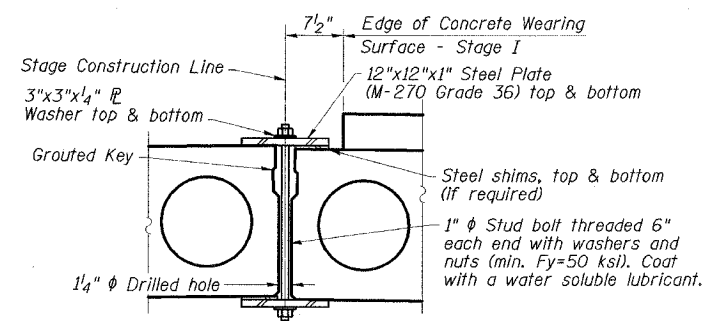


CLAMPING PLATE

Notes:  
See Stage Construction Details for traffic lanes. Cost is included with Precast Prestressed Concrete Deck Beams.



PLAN



SECTION  
SHEAR KEY CLAMPING DETAILS

**ESCA**  
CONSULTANTS, INC.

DESIGNED BY:	JMS	05/07
DRAWN BY:	HAS	05/07
CHECKED BY:	MTD	06/07
APPROVED BY:	RDP	06/07

SUPERSTRUCTURE  
IL 34/145 OVER BRIER CREEK  
FAP ROUTE 132 - SECTION 1BR-1  
SALINE COUNTY  
STATION 102+28.00  
STRUCTURE NO. 083-0018