

STATE OF ILLINOIS
DEPARTMENT OF TRANSPORTATION

ROUTE NO.	SECTION	COUNTY	DIS. NO.	SHEET	SHEET NO. 1 16 SHEETS
FAP 132	1BR-2	SALINE	114	43	
FED. ROAD DIST. NO.		ILLINOIS	FED. AID PROJECT-		

BENCHMARKS: Chiseled Square in top of north end of hub guard, SN 083-0019, Sta. 234+25, 16.3' Rt., Elev. 373.54; Chiseled square in top of south end of hub guard, SN 083-0019, Sta. 235+95, 16.3' Rt., Elev. 373.56.

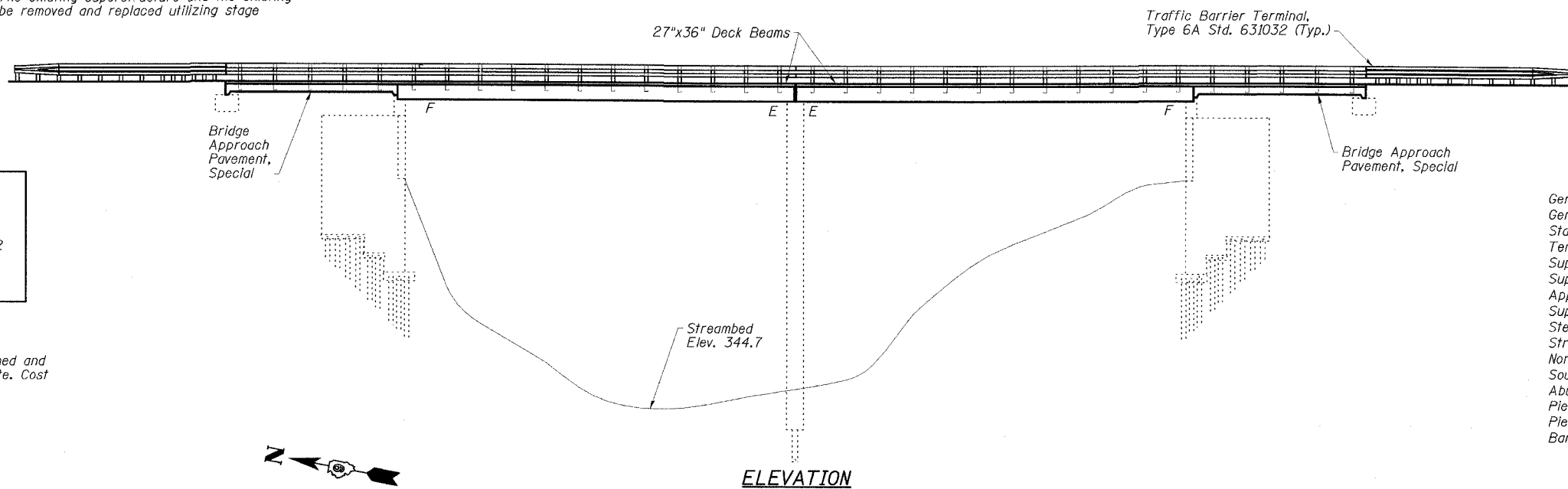
EXISTING STRUCTURE: SN 083-0019 was originally built in 1925 as S.B.I. Rte. 34, Section 1 BC. The superstructure was replaced in 1977. The superstructure consists of two simple spans, 27" PPC deck beams. The substructure consists of two reinforced concrete closed abutments on timber piles, and a single solid concrete encased pile bent pier supported on H-piles. The back-to-back abutments length is 119'-6", the out-to-out width is 33'-0". The existing superstructure and the existing bridge approach shoulders shall be removed and replaced utilizing stage construction.

No salvage.

STATION 235+10.00
REBUILT 20__ BY
STATE OF ILLINOIS
F.A.P. RT. 132 SEC. 1BR-2
LOADING HS20
STR. NO. 083-0019

NAME PLATE

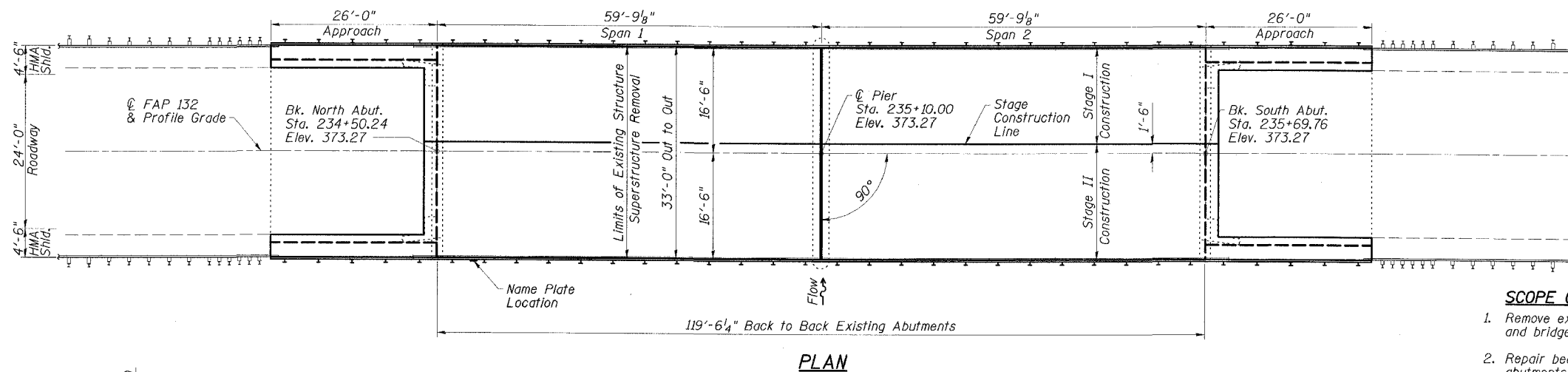
Note: See Std. 515001
Existing Name Plate shall be cleaned and relocated adjacent to the new plate. Cost included with Name Plates.



STRUCTURE INDEX OF SHEETS

General Plan	Dwg. No. 1 of 16
General Data	Dwg. No. 2 of 16
Stage Construction Details	Dwg. No. 3 of 16
Temporary Concrete Barrier	Dwg. No. 4 of 16
Superstructure	Dwg. No. 5 of 16
Superstructure Details	Dwg. No. 6 of 16
Approach Details	Dwg. No. 7 of 16
Superstructure and Approach Details	Dwg. No. 8 of 16
Steel Railing, Type SM	Dwg. No. 9 of 16
Strip Seal Expansion Joint	Dwg. No. 10 of 16
North Abutment	Dwg. No. 11 of 16
South Abutment	Dwg. No. 12 of 16
Abutment Details	Dwg. No. 13 of 16
Pier	Dwg. No. 14 of 16
Pier Details	Dwg. No. 15 of 16
Bar Splicer Assembly Details	Dwg. No. 16 of 16

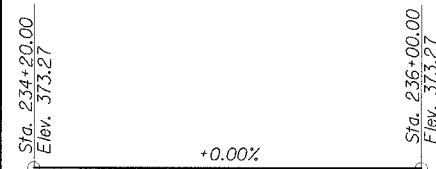
ELEVATION



PLAN

SCOPE OF WORK

1. Remove existing surfacing, steel railing, deck beams, curbs, and bridge approach shoulders.
2. Repair beam bearing seats and perform other repairs at abutments and pier as required.
3. Reconstruct a two-span PPCD beam superstructure with Concrete Wearing Surface and Steel Railing, Type SM. Reconstruct existing approach shoulders with Bridge Approach Pavement with Concrete Wearing Surface.



PROFILE GRADE
(Along \bar{C} Roadway)

ESCA
CONSULTANTS, INC.

DESIGNED BY:	JMS	05/07
DRAWN BY:	HAS	05/07
CHECKED BY:	MTD	06/07
APPROVED BY:	RDP	06/07

APPROVED
FOR STRUCTURAL ADEQUACY ONLY

Ralph E. Anderson (I.T.O.)
ENGINEER OF BRIDGES AND STRUCTURES



EXPIRES 11-30-08
SIGNATURE
8/02/07
DATE

DESIGN SPECIFICATION

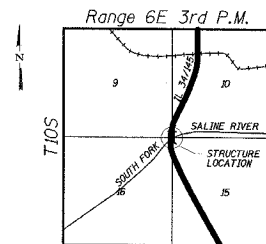
2002 AASHTO
LOADING HS20-44
No Allowance for future wearing surface

DESIGN STRESSES

FIELD UNITS
 $f'_c = 5,000$ psi (Concrete Wearing Surface)
 $f'_c = 3,500$ psi (All concrete except CWS)
 $f_y = 60,000$ psi (reinf.)

PRECAST PRESTRESSED UNITS

$f'_c = 5,000$ psi
 $f'_{ci} = 4,000$ psi
 $f'_s = 270,000$ psi ($1/2$ " low lax strands)
 $f_{si} = 201,960$ psi ($1/2$ " low lax strands)



LOCATION SKETCH

GENERAL PLAN
IL 34/145 OVER SOUTH FORK SALINE RIVER
FAP ROUTE 132 - SECTION 1BR-2
SALINE COUNTY
STATION 235+10.00
STRUCTURE NO. 083-0019