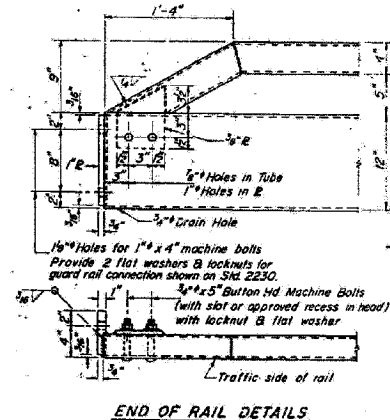
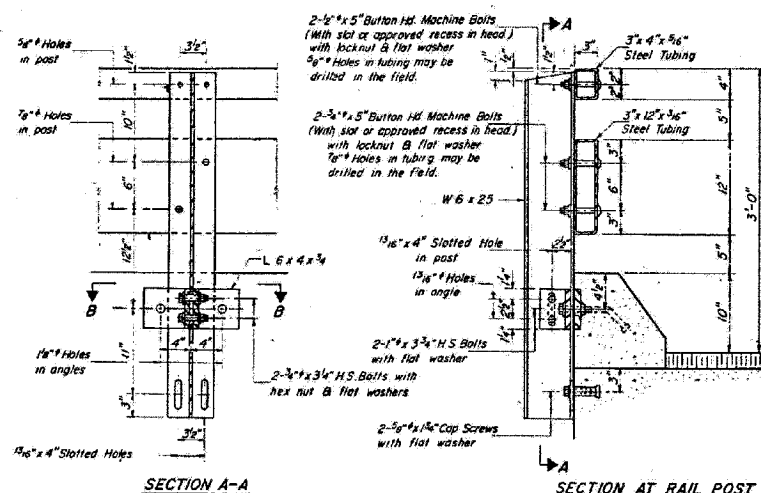
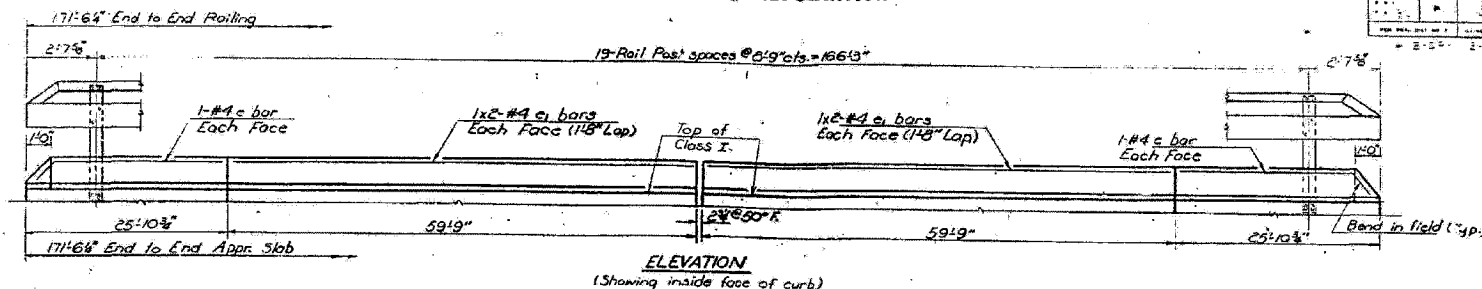


NOTE:
 Bars indicated thus 1x2-#4 indicate 1-line of bars with 2 lengths per line.

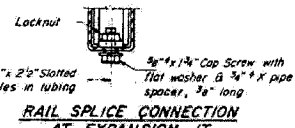
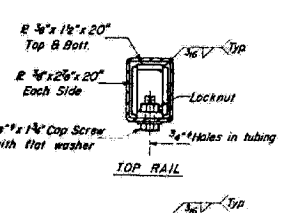
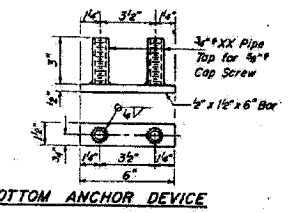
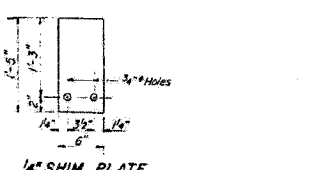
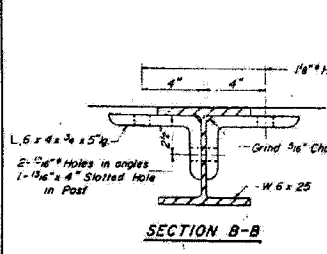
STATE OF ILLINOIS
 DEPARTMENT OF TRANSPORTATION

DATE	DESCRIPTION	BY	CHKD
5/1/07	ISSUED	JMS	JMS
5/1/07	REVISED		
5/1/07	REVISED		

SHEET NO. 5
 7 SHEETS

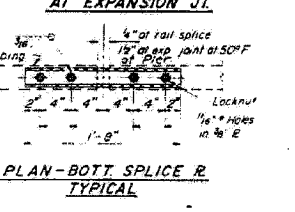
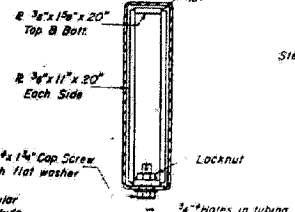
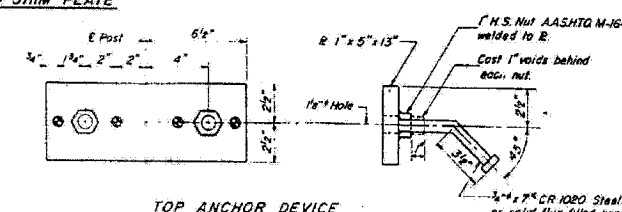


NOTES
 Hollow structural steel tubing shall conform to the requirements of ASTM designation A-500 Grade B or A-501 Structural Steel Tubing.
 All other steel shapes and plates shall conform to the requirements of AASHTO M-183 except posts shall conform to AASHTO M-188.
 Bolts, cap screws, and nuts shall conform to the requirement of ASTM designation A-307 except for high strength bolts, nuts and washers noted which shall conform to AASHTO M-164.
 All bolts, nuts, cap screws, washers and lock washers shall be galvanized in accordance with AASHTO M-232.
 All posts, railing, rail splices, anchor devices and angles shall be galvanized after shop fabrication in accordance with AASHTO M-11 and ASTM A-385. Galvanized rail shall not be painted.
 Railing shall be in accordance with Section 508 of the Standard Specifications, except as noted, and shall be paid for at the contract unit price per linear foot for STEEL RAILING, TYPE T.
 All field drilled holes shall be coated with an approved zinc rich paint before erection.
 The lower portion of the post flange in contact with concrete shall receive two coats of asphalt paint conforming to Section 714.08 Type B or place 1/2" fabric bearing pad between the post and concrete.
 The 1/2" high strength bolts used to connect the 6 x 4 x 4 angles to the post shall be tightened in accordance with Article 507.04(g)(3) of the Standard Specifications. The 1" high strength bolts connecting the angles to the concrete shall be tightened to a snug fit and given an additional 1/2 turn.
 For multi-span bridges, sufficient 4 x 6 x 1-5 galvanized steel shims shall be provided to align rail between adjacent spans. Cost incidental to Steel Railing.



CURB & RAIL
BILL OF MATERIAL

Bar	No.	Size	Length	Shape
e	6	#4	651'	
g	16	#4	3019'	
Reinforcement Bars			Lbs	470
Class A Concrete			Cu Yds	70.3
Steel Railing, Type T			Lm. Ft.	343



TYPE T
STEEL RAILING
 F.A. RL 132 SEC. 1B-DR-1
 SALINE COUNTY
 STA. 235 + 1000

DESIGNED: J.H.H.
 CHECKED: J.S.
 DRAWN: R. Doty
 EXAMINED: J.S.
 PASSED: J.S.
 APPROVED: J.S.

R-24 8-1-76 19'-0" Maximum Post Spacing