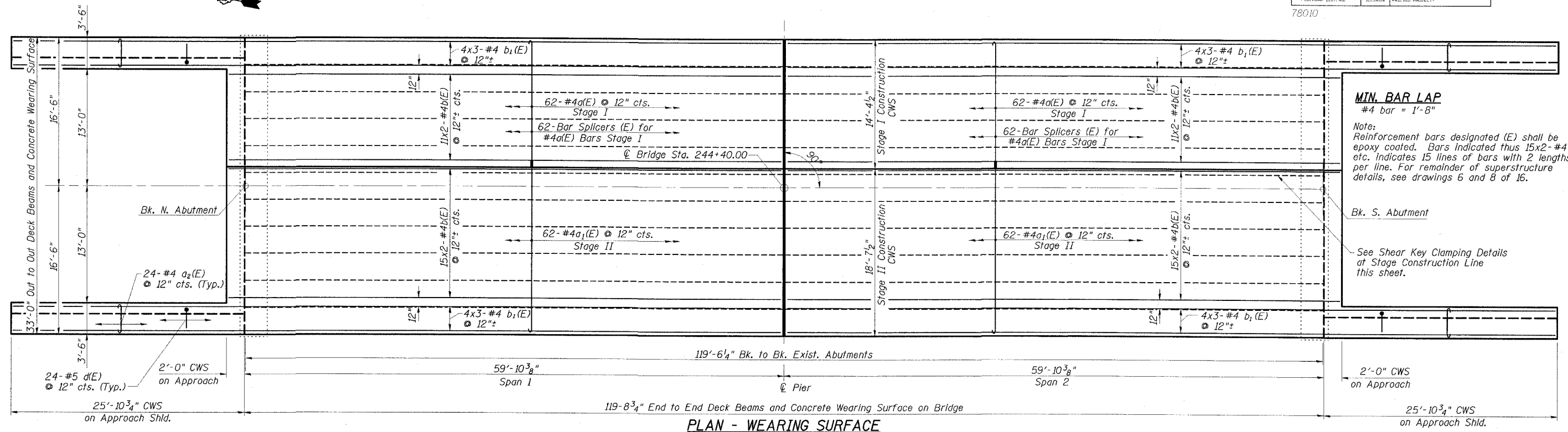


STATE OF ILLINOIS  
DEPARTMENT OF TRANSPORTATION

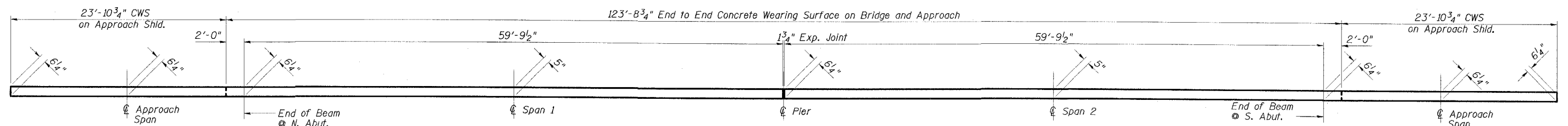
ROUTE NO.	SECTION	COUNTY	DATE	SHEET	SHEET NO. 5 16 SHEETS
FAP 132	IBR-3	SALINE	1/14	70	
FED. ROAD DIST. NO.	ILLINOIS	FED. AID PROJECT			

78010

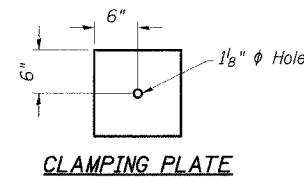
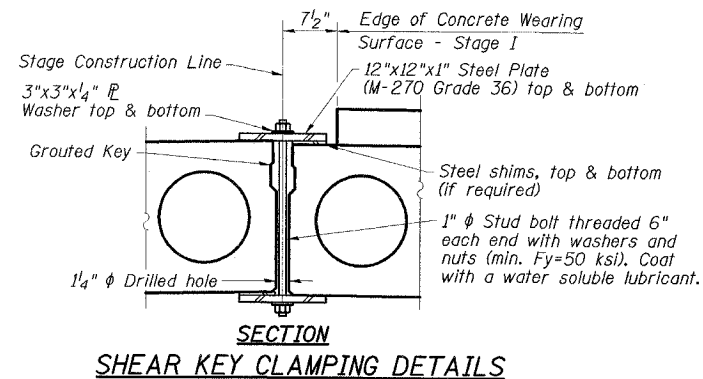
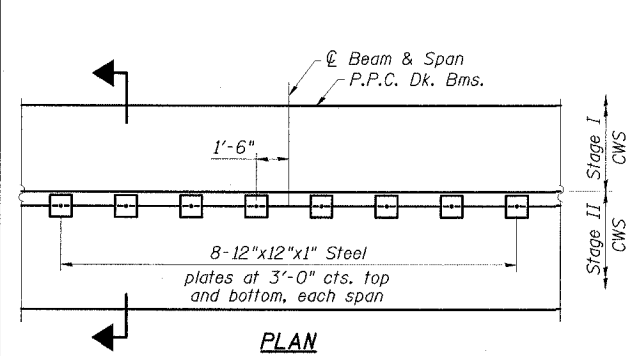


**MIN. BAR LAP**  
#4 bar = 1'-8"

Note:  
Reinforcement bars designated (E) shall be epoxy coated. Bars indicated thus 15x2-#4 etc. Indicates 15 lines of bars with 2 lengths per line. For remainder of superstructure details, see drawings 6 and 8 of 16.



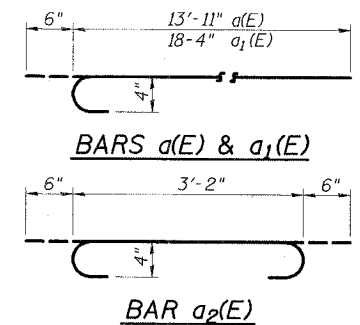
Note: Greater thickness is required at centerline of superstructure to conform to cross section slopes shown on Dwg. 6 of 16.



Notes:  
See Stage Construction Details for traffic lanes.  
Cost is included with Precast Prestressed Concrete Deck Beams.

**CONCRETE WEARING SURFACE  
BILL OF MATERIAL**

Bar	No.	Size	Length	Shape
a(E)	124	#4	14'-5"	U
a1(E)	124	#4	18'-10"	U
a2(E)	96	#4	4'-2"	U
b(E)	104	#4	31'-7"	—
b1(E)	48	#4	29'-7"	—
d(E)	96	#5	2'-0"	L
Reinforcement Bars, Epoxy Coated				Pound 6370
Concrete Wearing Surface, 5"				Sq. Yd. 491
Bridge Deck Grooving				Sq. Yd. 491
Bar Splicers				Each 124
Protective Coat				Sq. Yd. 491



**SUPERSTRUCTURE**  
IL 34/145 OVER SOUTH FORK  
SALINE RIVER OVERFLOW  
FAP ROUTE 132 - SECTION IBR-3  
SALINE COUNTY  
STATION 244+40.00  
STRUCTURE NO. 083-0020

**ESCA**  
CONSULTANTS, INC.

DESIGNED BY:	JMS	05/07
DRAWN BY:	HAS	05/07
CHECKED BY:	MTD	06/07
APPROVED BY:	RDP	06/07