

D.M. R.P. Spike in a 24" Oak 81' Rl. Sta. 209+06.  
Elev. 363.67

Existing Structure: Built as SBI Rte. 24, Sec. 1 BC, Sta. 244+40 in 1929. Single span 120' thru truss on P.C. diaphragm walls closed abutments. The existing superstructure to be removed by contractor and replaced with 2 open P.C. Deck Beams. Traffic shall be detoured during construction.  
Existing Structure No. 283-0030

STATE OF ILLINOIS  
DEPARTMENT OF TRANSPORTATION

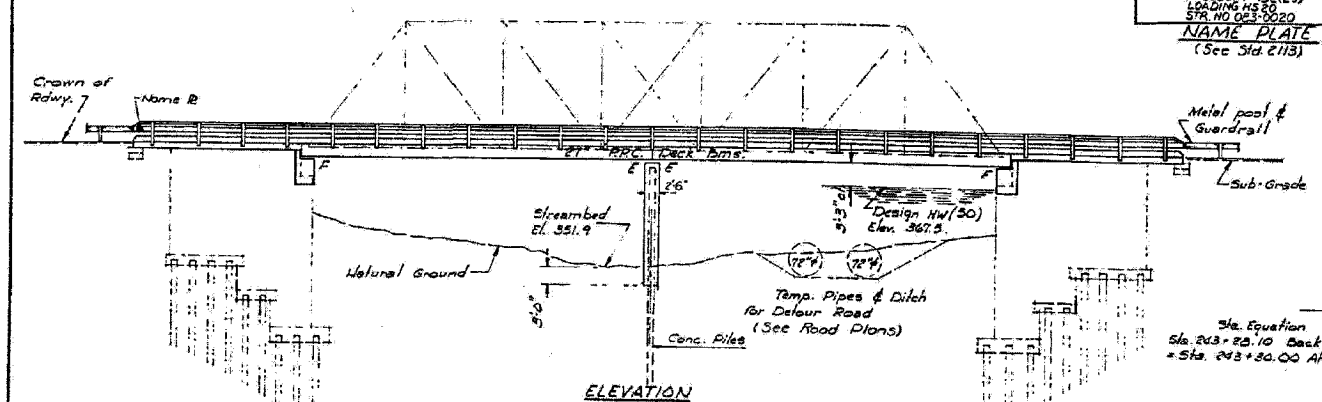
STATION 244+00.0  
REBUILT BY  
STATE OF ILLINOIS  
F.A. Rte. 132 SEC. 1B-DR-2  
LOADING HS 20-44  
STA. NO. 243+00.0  
NAME PLATE  
(See Std. 2113)

PROJECT NO.	SECTION	SHEET NO.	TOTAL SHEETS
132	1BR-3	32	18

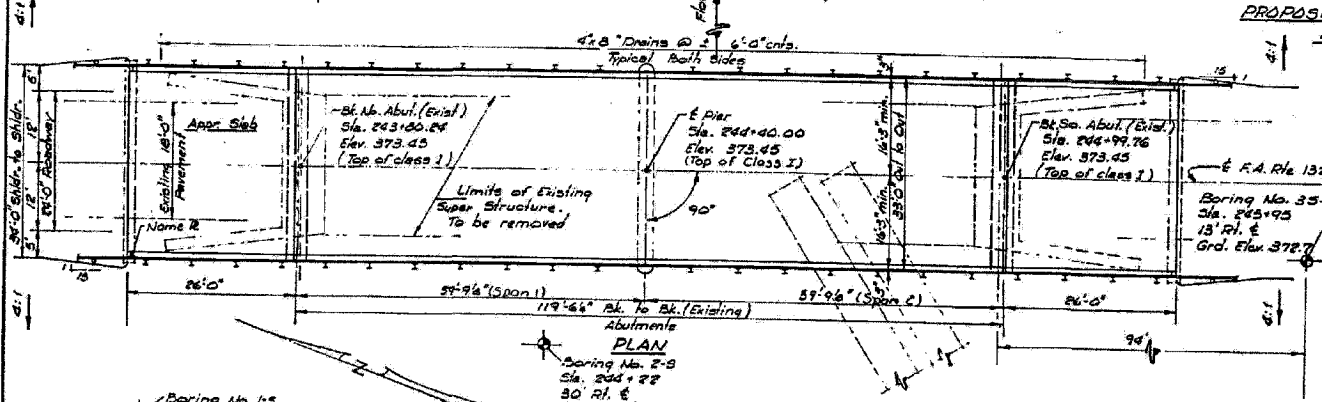
8 SHEETS

GENERAL NOTES

Reinforcement bars shall conform to the requirements of AASHTO M31, Grade 60 except as noted in Design Stresses.  
For Boring Data see the Proposal.  
All structural steel shall be shop painted with two coats of basic lead silico chromate paint.  
The Contractor shall drive one concrete test pile in a permanent location at the pier as directed by the Engineer before ordering the remainder of piles.  
The Contractor shall make allowance for the deflection of forms, shrinkage and settlement of falsework, in addition to allowance for dead load deflection.  
It shall be the responsibility of the Contractor to verify all dimensions and conditions existing in the field prior to construction and ordering of materials.  
The top surface of the beams shall be finished in accordance with Article 505.06 of the Standard Specifications except that the surface shall not be roughened by brooming. The finished surface shall be free of depressions or high spots with sharp corners.  
Protective Coat shall not be applied to surfaces to which Waterproofing Membrane System is applied.  
Expansion bolts shall consist of self drilling expansion anchors and 3/4" x 12" hooked bolts.  
Limits of Waterproofing Membrane System shall be six inches beyond the ends of approach slabs and face to face of curbs.  
Expansion guards which are not cast in the precast unit shall be fabricated and erected in accordance with Article 503.07(c) of the Standard Specifications and are included in quantity of structural steel.



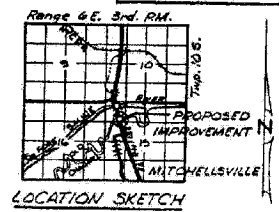
PROPOSED PROFILE GRADE  
F.A. Rte. 132  
@ Rdwy.



Item	Unit	Super	Sub	Total
Removal of Existing Superstructures	Each	1		1
Structure Excavation	Cu. Yd.		28	28
Bituminous Concrete Surface Course, Class I	Tons	40		40
Concrete Removal	Cu. Yd.		25	25
Pavement Removal	Sq. Yd.	100		100
Protective Coat	Sq. Yd.	31		31
Class A Concrete	Cu. Yd.		62.7	62.7
Class X Concrete	Cu. Yd.	102.0	10.7	112.7
Precast Prestressed Concrete Deck Beams (Depth)	Sq. Ft.	394.4		394.4
Structural Steel	Pound	2121		2121
Reinforcement Bars	Pound	20,460	3840	24,300
Waterproofing Membrane System	Sq. Yd.	590		590
Portland Cement Mortar Fining Course	Lin. Ft.	1178		1178
Steel Rolling, Type "T"	Lin. Ft.	343		343
Concrete Piles	Lin. Ft.		660	660
12" Piles Concrete	Each	1	1	2
Expansion Bolts 3/4"	Each		32	32
Preformed Joint Sealer (4")	Lin. Ft.	33		33
Name Plates	Each	1		1

DESIGN STRESSES  
FIELD UNITS  
f<sub>c</sub> = 2500 psi  
f<sub>t</sub> = 20,000 psi (Curbs)  
f<sub>s</sub> = 50,000 psi (Curbs)  
PRECAST PRESTRESS UNITS  
F<sub>c</sub> = 5,000 psi  
F<sub>t</sub> = 4,000 psi  
F<sub>s</sub> = 270,000 psi (1/2" strands)  
F<sub>si</sub> = 189,000 psi (3/4" strands)

LOADING HS 20-44  
Allow 25"/sq. ft. for future wearing surface.  
Design Specification: 1973 AASHTO 1974, 1975 and 1976 Interim Specification.



GENERAL PLAN & ELEVATION  
F.A. Rte. 132 Over So. Park Saline River (overflow)  
F.A. Rte. 132 SECTION 1B-DR-2  
SALINE COUNTY  
Sta. 244+40.00

DESIGNED: J. J. Hunt  
CHECKED: J. J. Hunt  
DRAWN: R. Doty  
CHECKED: J. J. Hunt

EXAMINED: J. J. Hunt  
PASSED: J. J. Hunt  
APPROVED: J. J. Hunt

FEBRUARY 14, 1977

WATERWAY INFORMATION  
Drainage Area = 268 sq. mi.  
Required Opening = 3832 sq. ft.  
Proposed Opening  
Main Channel = 1653 sq. ft.  
Overflow Channel = 1391 sq. ft.  
Overflow Culvert = 288 sq. ft.  
Q (10) = 77,000 cfs  
Q (100) = 20,000 cfs  
Design H.W.E. (50) = 367.5  
H.W.E. (100) = 360.0



**ESCA**  
CONSULTANTS, INC.

DESIGNED BY: JMS 06/07  
DRAWN BY: HAS 06/07  
CHECKED BY: MTD 06/07  
APPROVED BY: RDP 06/07

EXISTING STRUCTURE PLANS  
FAP RTE 132 (IL 34/145)  
SECTION 1BR-3  
SALINE COUNTY

FOR INFORMATION ONLY