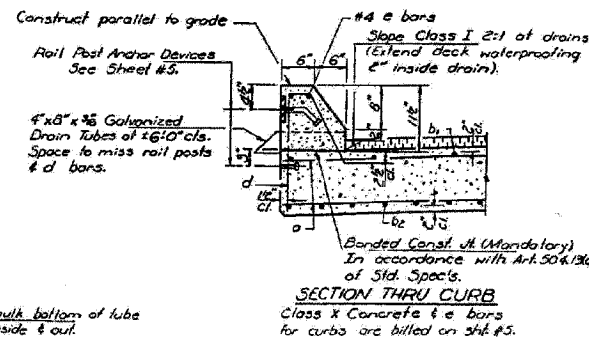
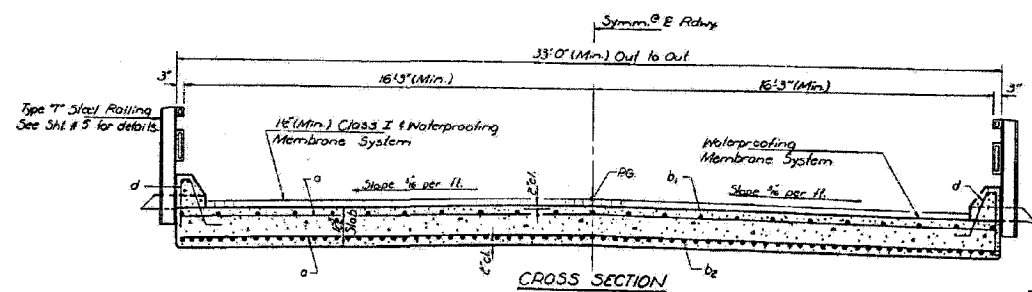
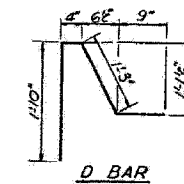
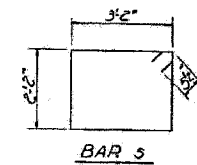
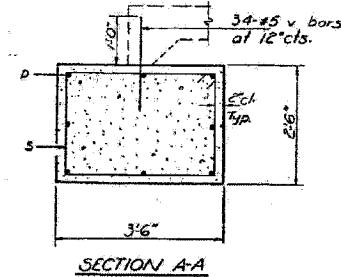
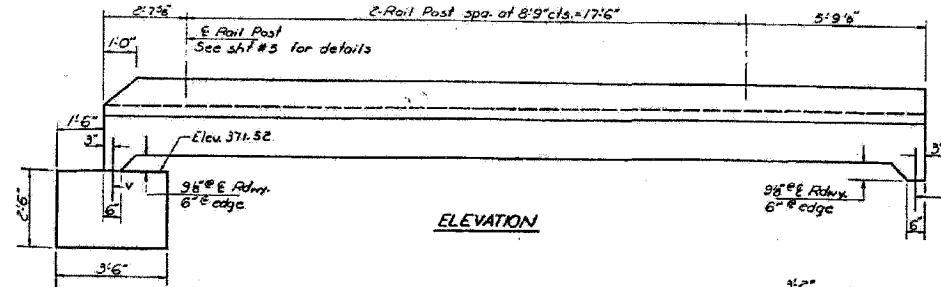
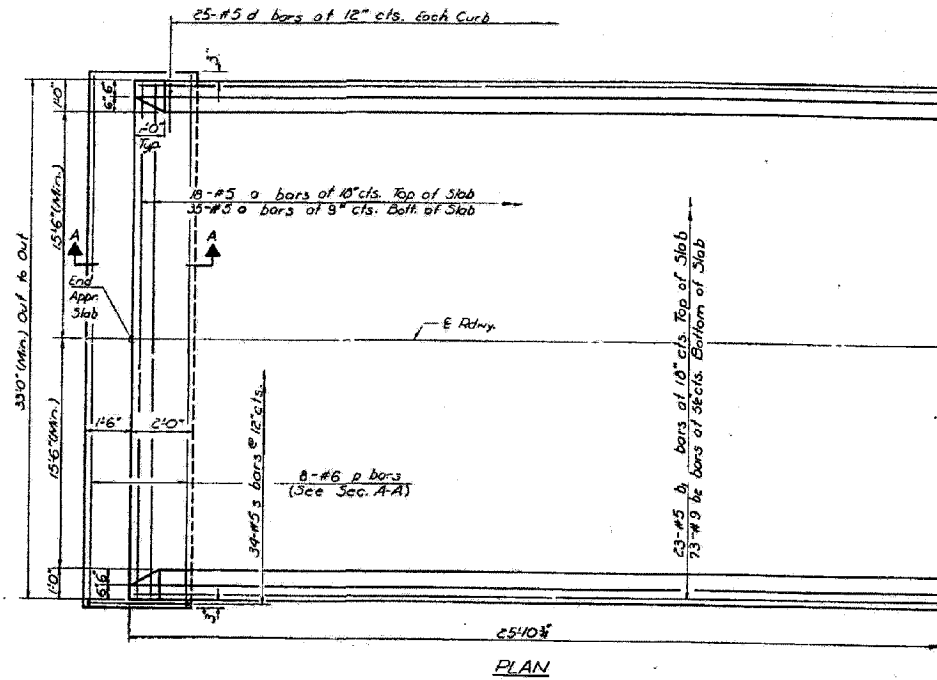


FAP RTE	SECTION	COUNTY	TOTAL SHEETS	SHEET NO.
132	IBR-3	SALINE	114	83
STA.		TO STA.		
FED. ROAD DIST. NO.		ILLINOIS FED. AID PROJECT AID		

STATE OF ILLINOIS
DEPARTMENT OF TRANSPORTATION

PROJECT NO.	SECTION	SHEET NO.	TOTAL SHEETS
132	IBR-3	32	19
SHEET NO. 2 OF SHEETS			

18-DR-1, 18-DR-2, 1-KNR5-2



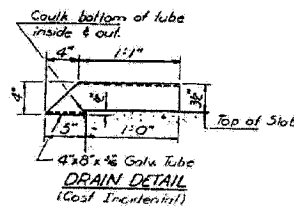
**TWO APPROX SLABS
BILL OF MATERIAL**

Bar	Qty	Size	Length	Shops
a	106	#3	32'9"	
b1	46	#5	25'8"	
b2	148	#9	25'8"	
d	100	#3	45"	
p	16	#8	33'3"	
s	68	#5	11'7"	
v	68	#5	2'0"	
Class X Concrete		Cu. Yd.	30.2	
Reinforcement Bars		Pound	19,790	

APPROACH DETAILS
F.A. RT. 132 SEC. 18-DR-2
SALINE COUNTY
STA. 244+00.00

DESIGNED	J. J. Hensch	EXAMINED	[Signature]
CHECKED	[Signature]	PASSED	[Signature]
DRAWN	R. Daly	APPROVED	[Signature]
CHECKED	[Signature]		

Note: Approach slab shall be poured after PRC Deck Beams are in place to allow for alignment of the water table.



DESIGNED BY:	JMS	06/07
DRAWN BY:	HAS	06/07
CHECKED BY:	MTD	06/07
APPROVED BY:	RDP	06/07