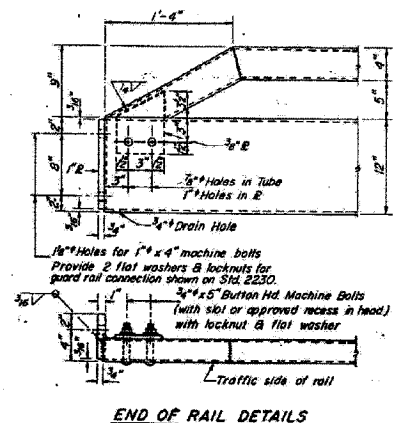
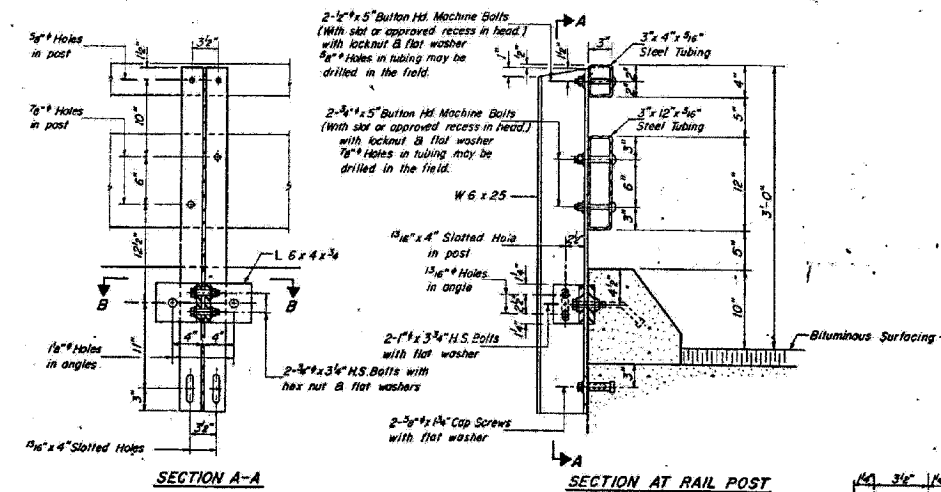
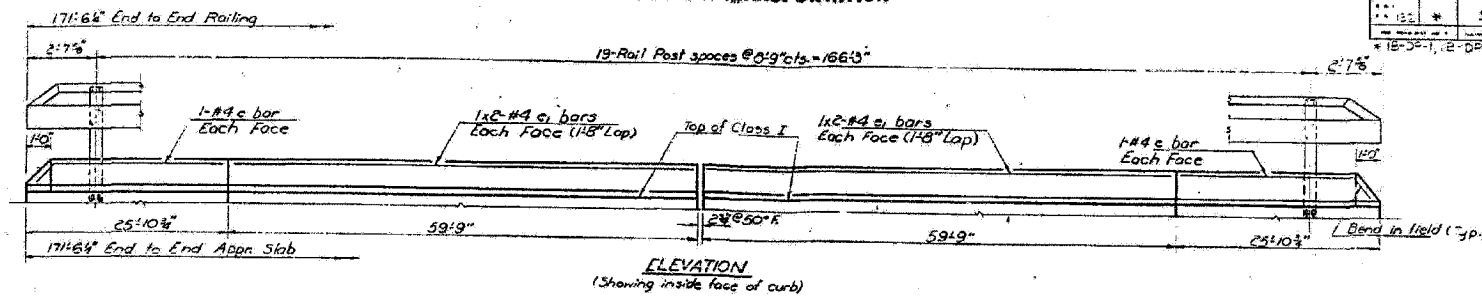


NOTE:
Bars indicated thus 1x2-#4 indicate 1-line of bars with 2 lengths per line.

DEPARTMENT OF TRANSPORTATION

NO.	REV.	DATE	BY	CHKD.	APP. NO.
1		5-1-07	JMS	RDP	22
SHEET NO. 5					
8 SHEETS					



NOTES

Hollow structural steel tubing shall conform to the requirements of ASTM designation A-500 Grade B or A-501 Structural Steel Tubing.

All other steel shapes and plates shall conform to the requirements of AASHTO M-183 except posts shall conform to AASHTO M-188.

Bolts, cap screws, and nuts shall conform to the requirements of ASTM designation A-307 except for high strength bolts, nuts and washers noted which shall conform to AASHTO M-164.

All bolts, nuts, cap screws, washers and lock washers shall be galvanized in accordance with AASHTO M-232.

All posts, railing, rail splices, anchor devices and angles shall be galvanized after shop fabrication in accordance with AASHTO M-111 and ASTM A-305. Galvanized rail shall not be painted.

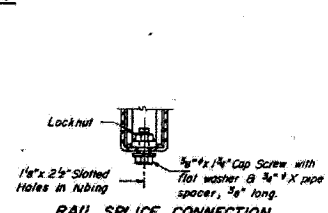
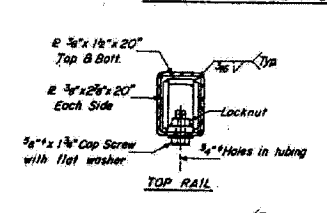
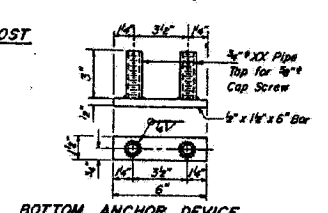
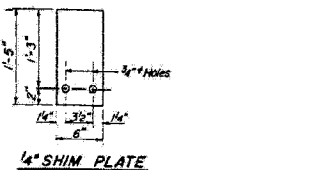
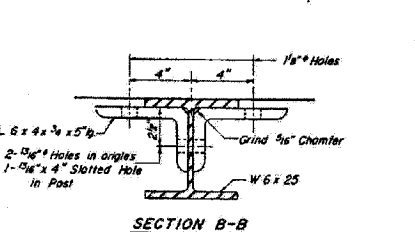
Railing shall be in accordance with Section 508 of the Standard Specifications, except as noted, and shall be paid for at the contract unit price per linear foot for STEEL RAILING, TYPE T.

All field drilled holes shall be coated with an approved zinc rich paint before erection.

The lower portion of the post flange in contact with concrete shall receive two coats of asphalt paint conforming to Section 714.08 Type B or place 1/2" fabric bearing pad between the post and concrete.

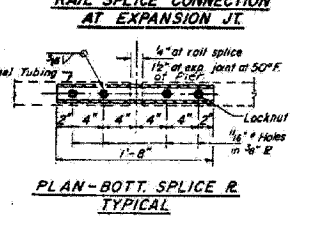
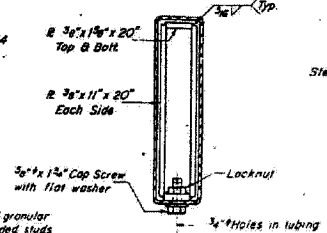
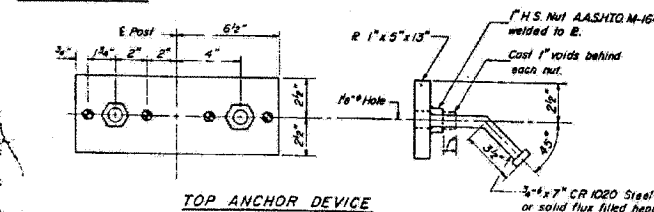
The 3/4" high strength bolts used to connect the 6 x 4 x 3/4 angles to the post shall be tightened in accordance with Article 507.04(g)(3) of the Standard Specifications. The 1" high strength bolts connecting the angles to the concrete shall be tightened to a snug fit and given an additional 1/2 turn.

For multi-span bridges, sufficient 4" x 6" x 1/2" galvanized steel shims shall be provided to align rail between adjacent spans. Cost incidental to Steel Railing.



CURB & RAIL BILL OF MATERIAL

Bar	No.	Size	Length	Shape
B	25	#4	25'-0"	
C	16	#4	30'-9"	
Reinforcement Bars				
			Lbs.	470
Class X Concrete				
			Cu. Yds.	10.2
Steel Railing, Type T				
			Lin. Ft.	343



TYPE T STEEL RAILING
FA. RT. 132 SEC. 16-DR-2
SALINE COUNTY
STA. 244+4000

DESIGNED	JMS	06/07
CHECKED	HAS	06/07
DRAWN	R. Doty	
CHECKED	RDP	06/07

R-24 8-1-76 19'-0" Maximum Post Spacing