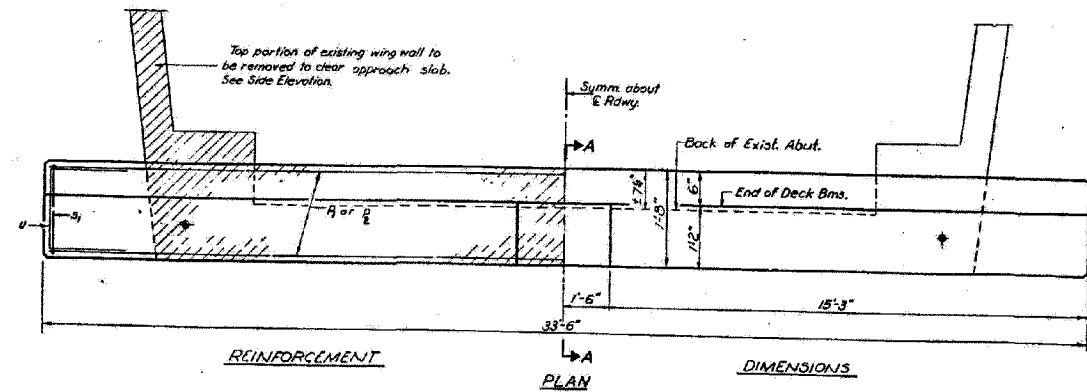
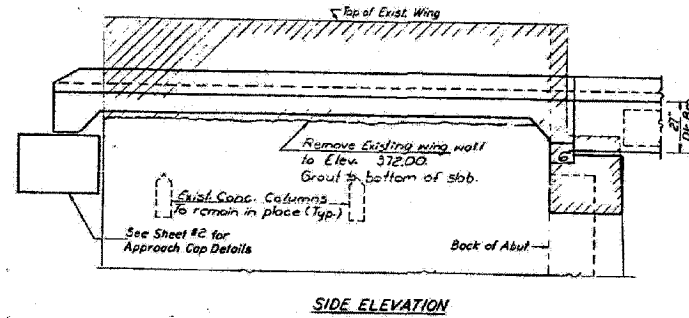
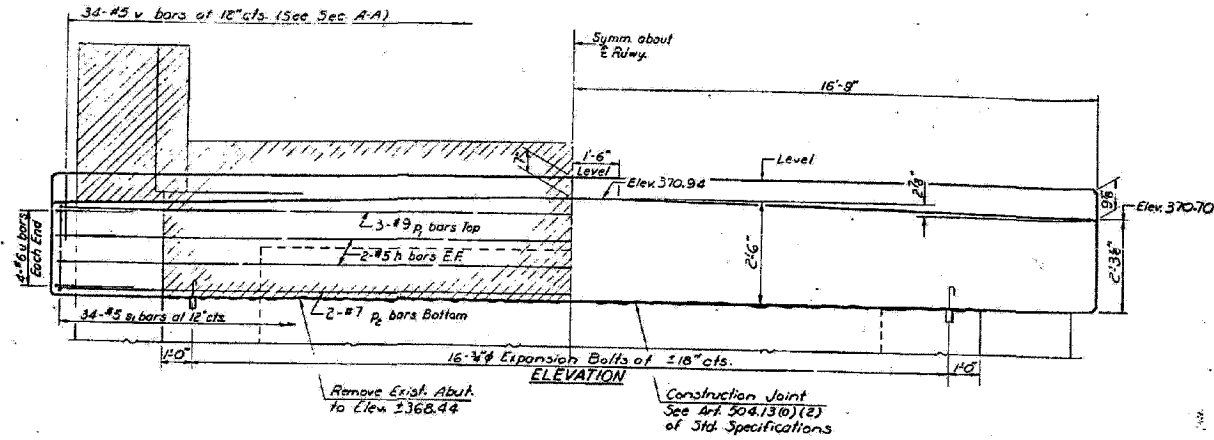


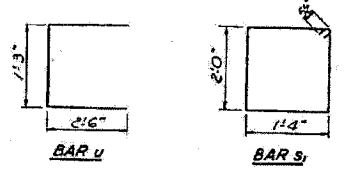
CONTRACT NO. 78010			
FAP RTE	SECTION	COUNTY	TOTAL SHEET NO.
132	IBR-3	SALINE	114 87
STA.		TO STA.	
FED. ROAD DIST. NO.		ILLINOIS FED. AID PROJECT AID	

STATE OF ILLINOIS  
DEPARTMENT OF TRANSPORTATION

DATE	DESCRIPTION	BY	NO.	REVISION
11-13-07	Saline	ST	2,3	0 SHEETS
#IB-DR-1, IB-DR-2, I-XWR5-2				

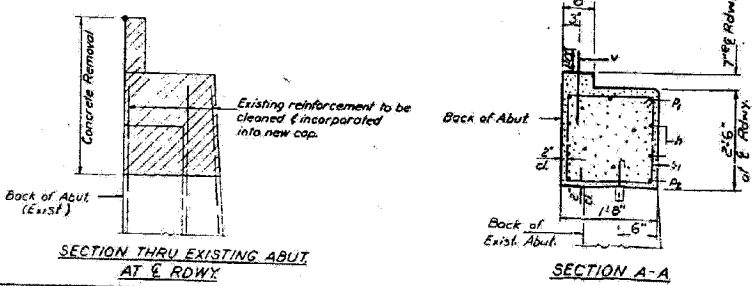


NOTES:  
Hatched Areas indicate Concrete Removal.  
All edges shall have standard 3/4" chamfers except as noted.  
Expansion bolts shall be anchored in sound concrete.



TWO ABUTMENTS  
BILL OF MATERIAL

Bar	No	Size	Length	Shape
h	8	#5	33'-3"	—
D1	6	#9	33'-3"	—
D2	4	#7	33'-3"	—
S1	68	#5	7'-7"	□
U	16	#6	6'-3"	U
V	68	#5	2'-0"	—
Class X Concrete		Cu Yds	10.7	
Reinforcement Bars		Lbs	2060	
Concrete Removal		Cu Yds	16	
Expansion Bolts		#4 Each	30	



DESIGNED: *T. H. Houch*  
CHECKED: *R. D. Doly*  
DRAWN: *R. Doly*  
CHECKED: *R. Doly*

EXAMINED: *FEB 14 1977*  
PASSED: *[Signature]*  
APPROVED: *[Signature]*  
DIRECTOR OF HIGHWAYS

NORTH AND SOUTH  
ABUTMENTS  
F.A. RT. 132 SEC. 1B-DR-2  
SALINE COUNTY  
STA. 244+40.00

**ESCA**  
CONSULTANTS, INC.

DESIGNED BY: JMS 06/07  
DRAWN BY: HAS 06/07  
CHECKED BY: MTD 06/07  
APPROVED BY: RDP 06/07

FOR INFORMATION ONLY

EXISTING STRUCTURE PLANS  
FAP RTE 132 (IL 34/145)  
SECTION 1BR-3  
SALINE COUNTY