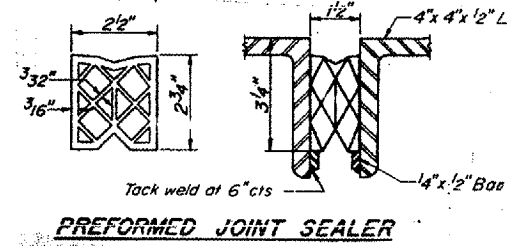
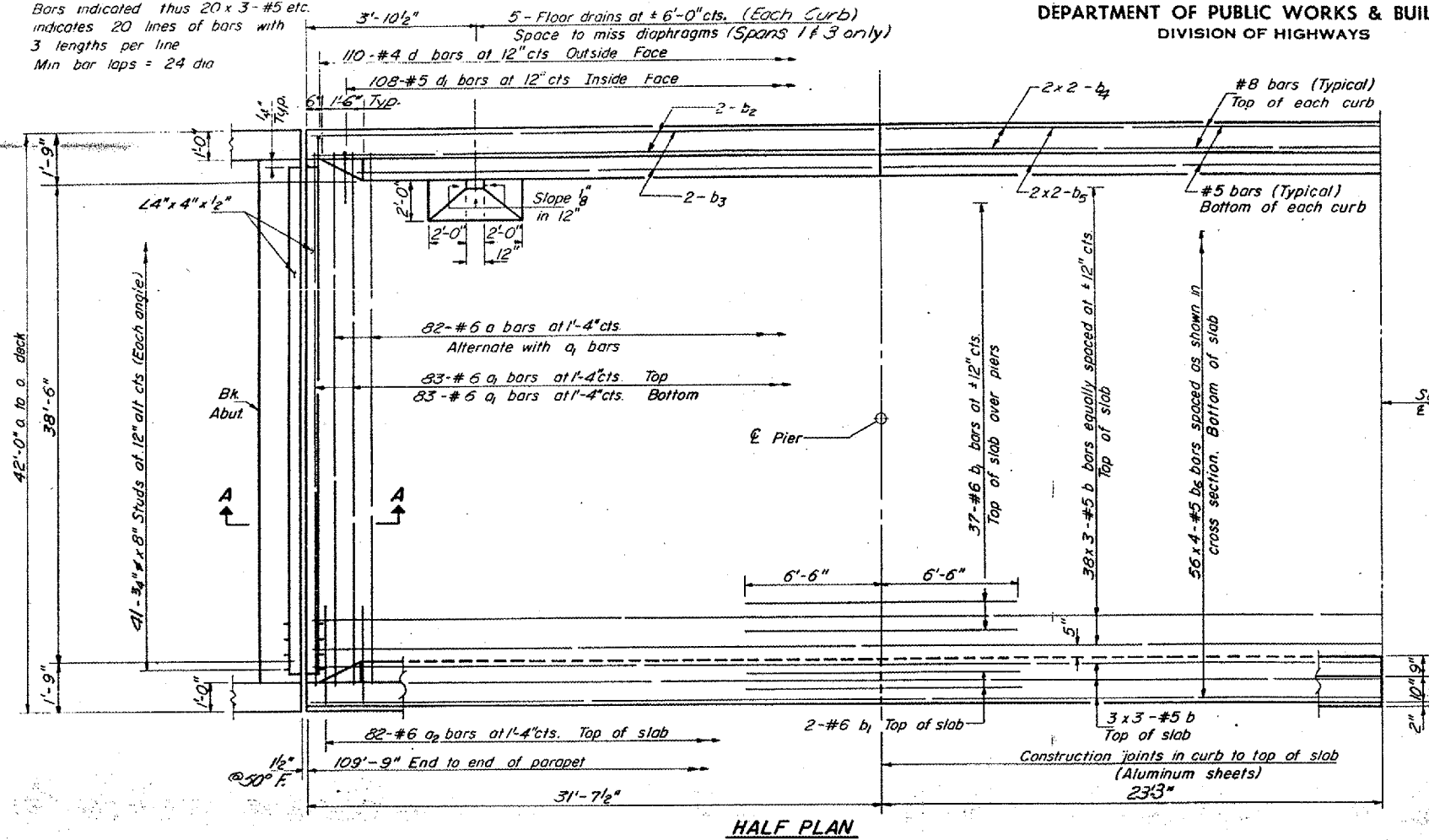


STATE OF ILLINOIS
DEPARTMENT OF PUBLIC WORKS & BUILDINGS
DIVISION OF HIGHWAYS

FAI 24
D9 BRIDGE PAINTING FY 08-1
JOHNSON & WILLIAMSON COUNTIES
CONTRACT 78020
SHEET 12 OF 35

Note
Bars indicated thus 20 x 3 - #5 etc.
indicates 20 lines of bars with
3 lengths per line
Min bar laps = 24 dia



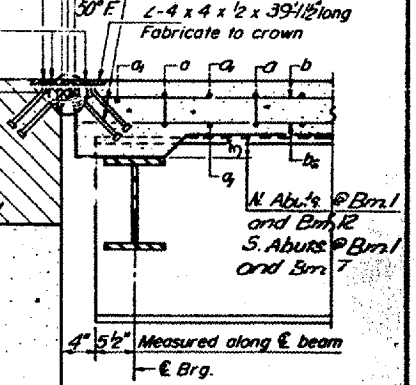
7/16" holes at 12" cts for 3/8" bolts set on 2 1/2" gage line. All bolts shall be burred, sawed or clipped off flush with back of angles after forms are removed.

3/4" x 8" CR. 1020 STL granular or solid flux filled headed studs, automatically end welded. (39 - studs at 12" alt. cts - each angle)

7/16" vent holes at 12" cts. set on 1 3/8" gage line.

See Detail of Preformed Jt. Sealer

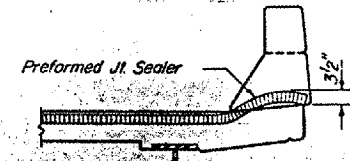
Hatched area to be poured after superstructure forms have been removed. Quantity of Class X Concrete included with superstructure.



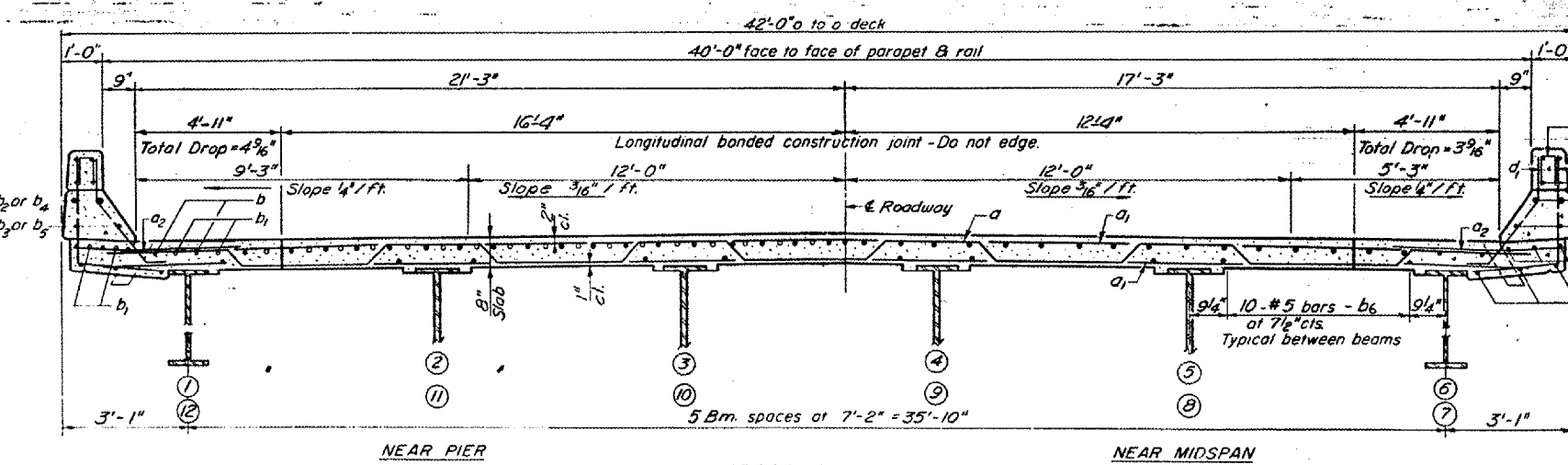
SECTION A-A

TWO SUPERSTRUCTURES
BILL OF MATERIAL

Bar	No	Size	Length	Shape
a	164	#6	41'-9"	~
a ₁	332	#6	40'-0"	~
a ₂	328	#6	4'-0"	~
b	264	#5	37'-6"	~
b ₁	164	#6	13'-0"	~
b ₂	16	#8	31'-3"	~
b ₃	16	#5	31'-3"	~
b ₄	16	#8	24'-3"	~
b ₅	16	#5	24'-0"	~
b ₆	448	#5	28'-6"	~



TYPICAL END OF SEALER TREATMENT



NEAR PIER

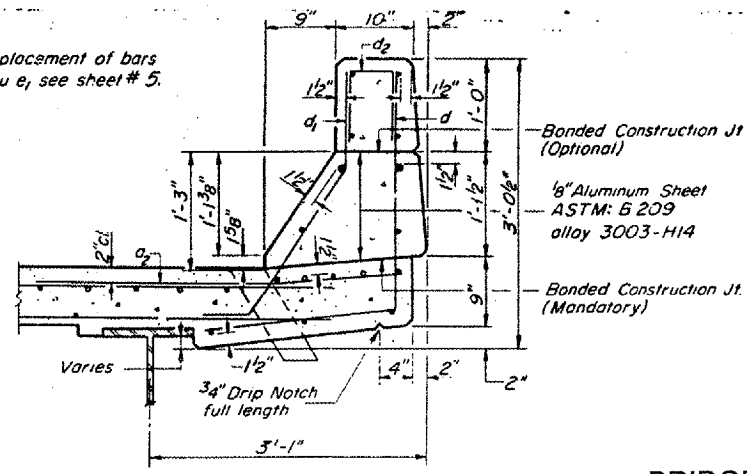
CROSS SECTION

(E. Bd. LANES LOOKING NORTH - Bms. 1 thru 6)
(W. Bd. LANES LOOKING SOUTH - Bms. 7 thru 12)

NEAR MIDSPAN

(Cross section typical from Sta. 408 + 07.33 to Sta. 408 + 46.12)
(Superelevation transition as shown) on Curve Data sheet #1.

Note: For placement of bars d₂ & e thru e₁, see sheet # 5.

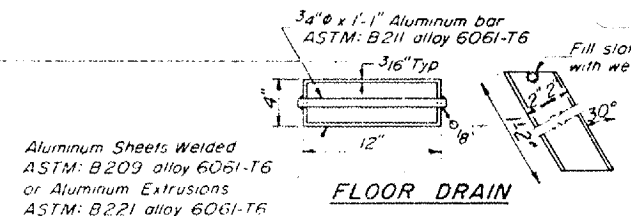
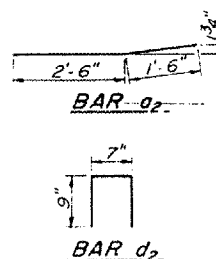
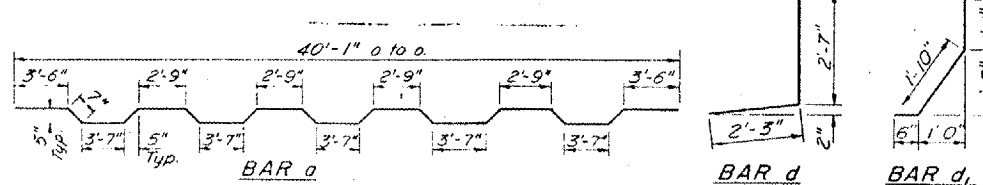


CURB SECTION

Cost of Aluminum Drains and Sheets shall be incidental to Class X Concrete

DESIGNED	J.M. Patel
CHECKED	Richard K Chandrahri
DRAWN	R. Doty
CHECKED	R.K.C.

EXAMINED	Aug 21 1970
PASSED	Richard A. Hollerman



FLOOR DRAIN

quantities See sheet #6

SUPERSTRUCTURE
FAI. RT. 24 - SEC. 44-5HB-2
JOHNSON COUNTY
STA. 408 + 61.70