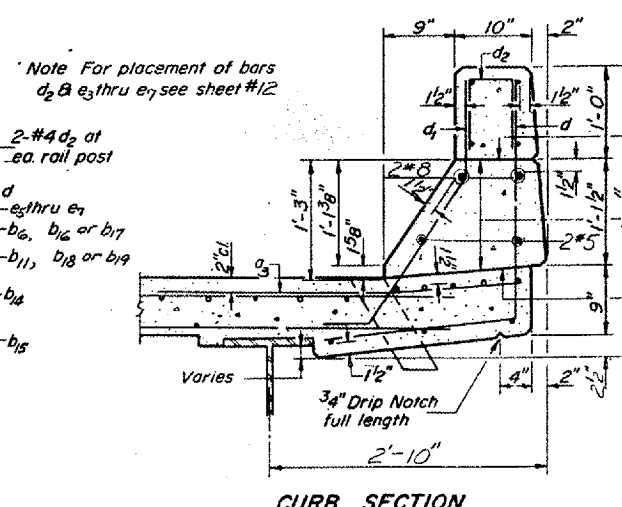
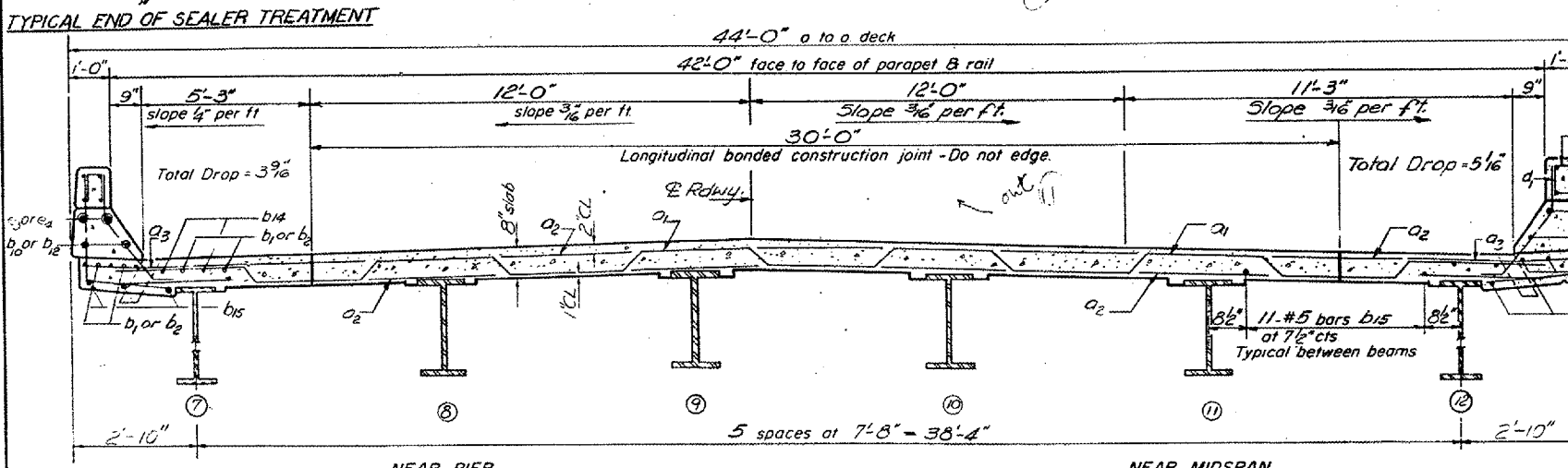
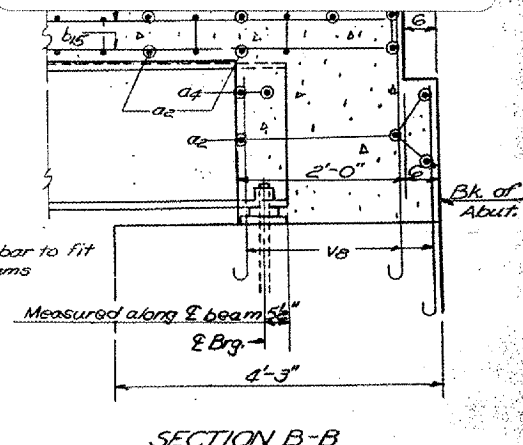
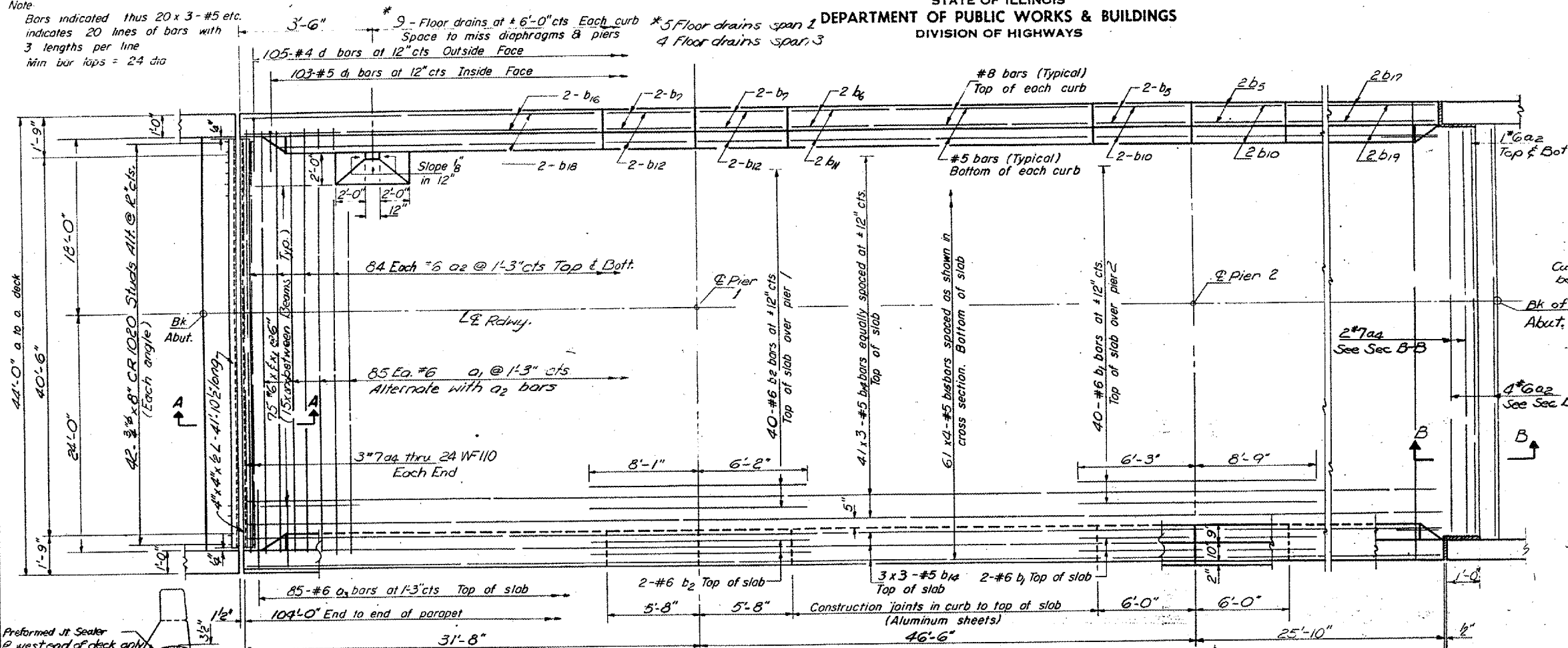


STATE OF ILLINOIS  
DEPARTMENT OF PUBLIC WORKS & BUILDINGS  
DIVISION OF HIGHWAYS

FAI 24  
D9 BRIDGE PAINTING FY 08-1  
JOHNSON & WILLIAMSON COUNTIES  
CONTRACT 78020  
SHEET 17 OF 35

Note  
Bars indicated thus 20 x 3-#5 etc.  
indicates 20 lines of bars with  
3 lengths per line  
min bar laps = 24 dia



BILL OF MATERIAL

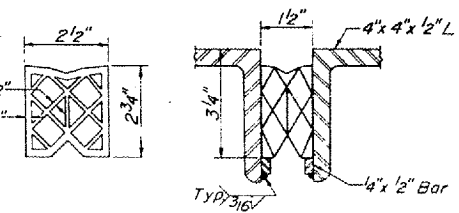
Bar	No	Size	Length	Shape
a1	85	#6	43'-8"	~
a2	174	#6	42'-0"	~
a3	170	#6	4'-0"	~
a4	5	#7	38'-3"	~
b1	44	#6	15'-0"	~
b2	44	#6	14'-3"	~
b3	8	#8	5'-9"	~
b4	4	#8	34'-6"	~
b7	8	#8	5'-6"	~
b10	8	#5	5'-9"	~
b11	4	#5	34'-6"	~
b12	8	#5	5'-6"	~
b14	141	#5	36'-0"	~
b15	244	#5	27'-3"	~
b6	4	#8	25'-9"	~
b7	4	#8	20'-6"	~
b18	4	#5	25'-9"	~
b19	4	#5	20'-6"	~
d	210	#4	4'-6"	~
d1	206	#5	3'-5"	~
x	75	#6	5'-4"	~
x1	75	#6	4'-2"	~
Reinforcement Bars			Lbs.	36,100
Structural Steel			Lbs.	Lump Sum
Class X Concrete			Cu. Yds.	142.4

See Sheet # 3 for Section A-A

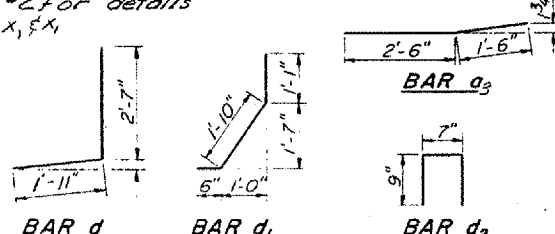
Note: V8 Bar detailed and billed on Sheet #12

DESIGNED	J. M. Patel
CHECKED	J. M. Patel
DRAWN	A. Barroza
CHECKED	J. M. P.

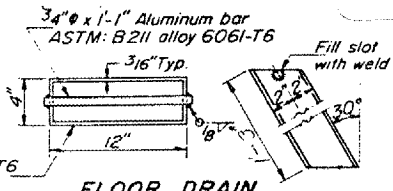
EXAMINED	196
PASSED	
APPROVED	



See Sheet #2 for details of bars a1, x, x1



Aluminum Sheets Welded  
ASTM: B 209 alloy 6061-T6  
or Aluminum Extrusions  
ASTM: B 221 alloy 6061-T6



BRIDGE NO. 3  
S.N. 044-0049  
FOR INFORMATION ONLY

quantities See sheet 12  
**SUPERSTRUCTURE**  
**EAST BD. LANES**  
**FA.I.R.T. 24 SEC. 44-6HBI**  
**JOHNSON COUNTY**  
**STA. 258+93.67 (E.B.L.)**