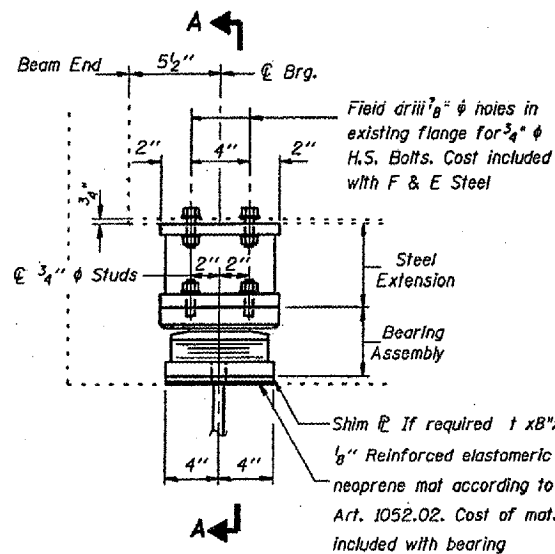
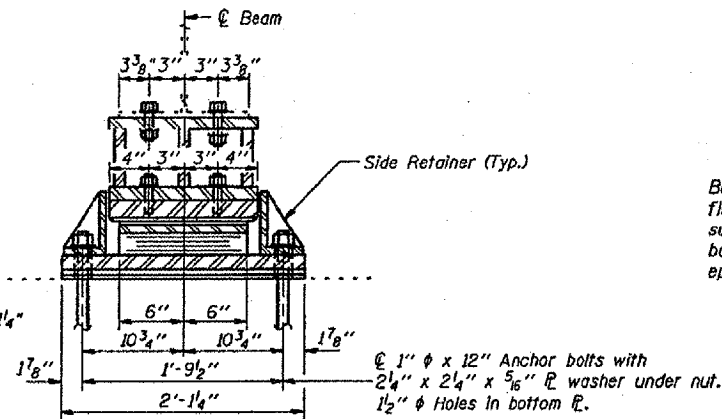


STATE OF ILLINOIS  
DEPARTMENT OF TRANSPORTATION

FAI 24  
D9 BRIDGE PAINTING FY 08-1  
JOHNSON & WILLIAMSON COUNTIES  
CONTRACT 78020  
SHEET 23 OF 35



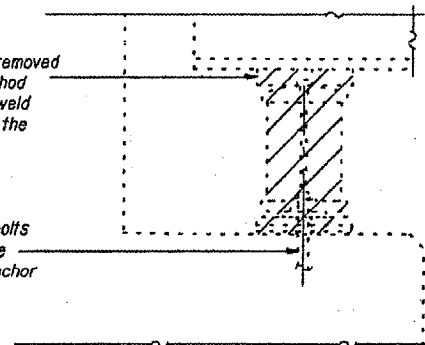
ELEVATION AT W. ABUT.



SECTION A-A

Existing Plate to be removed using the air-arc method and grind smooth all weld material remaining on the bottom flange.

Burn the existing anchor bolts flush with existing concrete surface. Grind existing anchor bolts smooth and seal with epoxy.



ABUTS

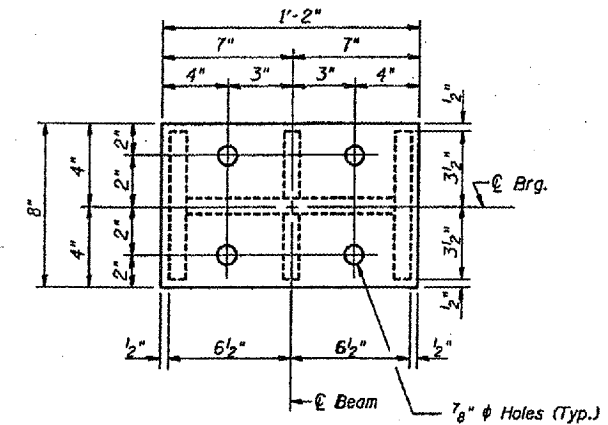
EXISTING BEARING REMOVAL DETAILS

Cost is included with Jack and Remove Existing Bearings

Notes: Prior to ordering any material, the Contractor shall verify in the field all bearing height and shim thickness dimensions. The minimum jack capacity required is 30 Tons.

New steel extensions, side retainers, connection bolts, anchor bolts, and shim plates are included in "Furnishing and Erecting Structural Steel".

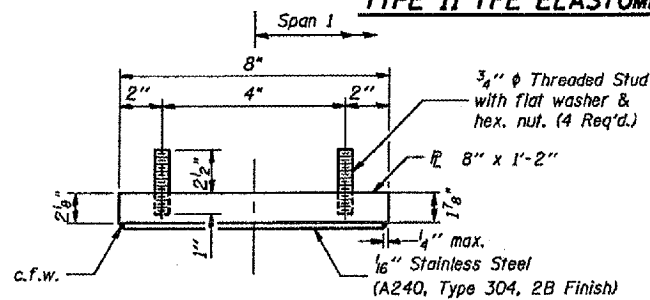
Hatched areas indicate Jack and Remove Existing Bearings. Existing diaphragm removal may be required to provide clearance for the drill during drilling holes in the bottom flange for new bearing attachment. Cost shall be included in the cost of "Furnishing and Erecting Structural Steel".



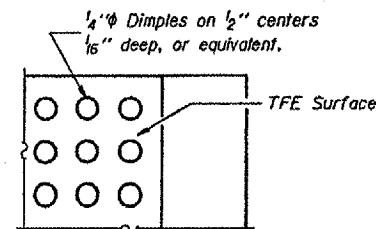
PLAN-TOP & BOTTOM PLATE

TYPE II TFE ELASTOMERIC EXP. BRG.

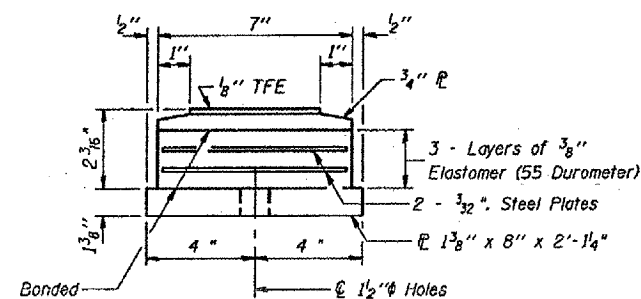
Notes: See sheet 150 for Anchor Bolt installation.



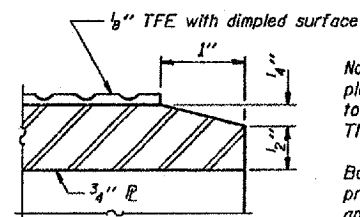
TOP BEARING ASSEMBLY



PLAN-TFE SURFACE



BOTTOM BEARING ASSEMBLY



SECTION THRU TFE

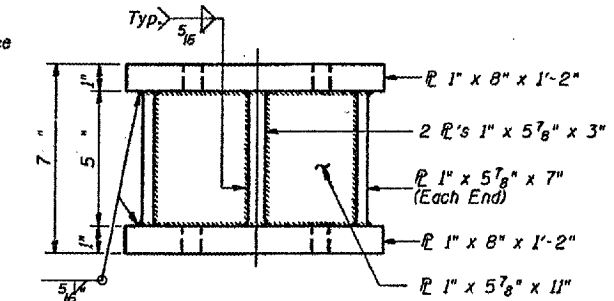
Note: The 1/8" TFE sheet shall be bonded directly to the top steel plate with a two-component, medium viscosity epoxy resin, conforming to the requirements of the Federal Specification MMM-A-134, Type I. The bond agent shall be applied on the full area of the contact surfaces.

Bonding of 1/8" TFE sheet during vulcanizing process will be permitted provided the process and method of adjusting assembly height is approved by the Engineer.

GIRDER REACTIONS

RD	(K)	15.4
Rt	(K)	34.7
Imp.	(K)	10.4
R (Total)	(K)	60.5

STEEL EXTENSION AT WEST ABUT.

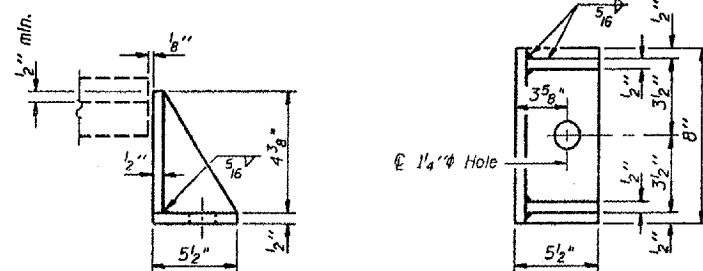


BILL OF MATERIAL

Item	Unit	Total
Elastomeric Bearing Assembly Type II	Each	6
Jack and Remove Existing Bearings	Each	6

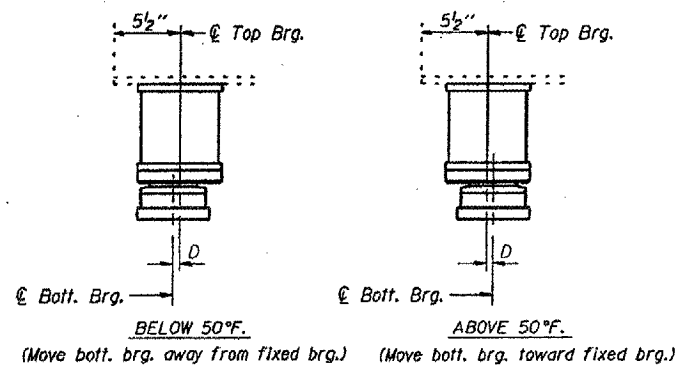
WEST ABUTMENT  
TYPE II ELASTOMERIC BEARING  
JOHNSON COUNTY  
S.N. 044-0050 (W.B.)

DESIGNED:	MAS
CHECKED:	MAS
DRAWN:	JMB
CHECKED:	MAS



SIDE RETAINER

Equivalent rolled angle with stiffeners will be allowed in lieu of welded plates.



SETTING ANCHOR BOLTS AT EXP. BRG.

D=1/8" per each 100' of expansion for every 15° temp. change from the normal temp. of 50°F.

BRIDGE NO. 4  
S.N. 044-0050  
FOR INFORMATION ONLY

BRIDGE