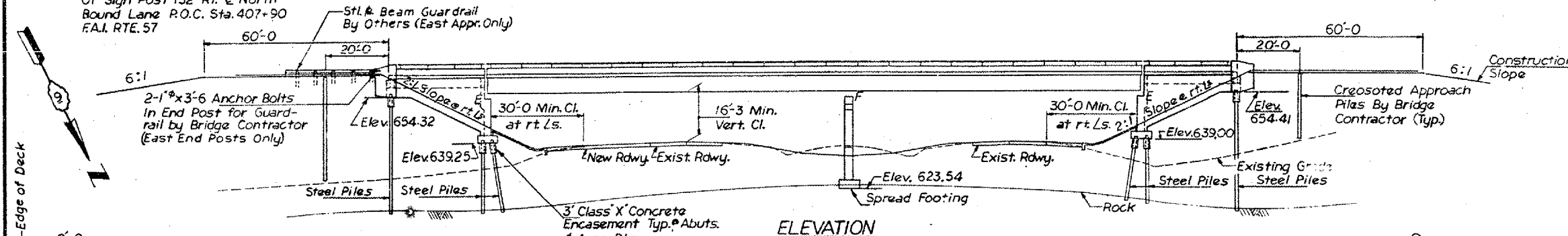


B.M. 111: Elev. 633.08 Top Painted Bolt
Of Sign Post 132' Rt. & North
Round Lane P.O.C. Sta. 407+90
F.A.I. RTE. 57

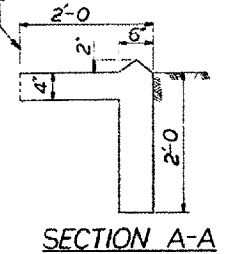
FAI 24
D9 BRIDGE PAINTING FY 08-1
JOHNSON & WILLIAMSON COUNTIES
CONTRACT 78020
SHEET 25 OF 35



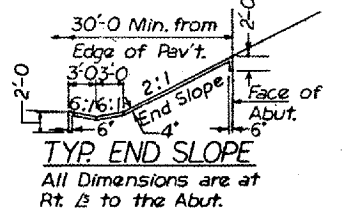
CREOSOTED APPROACH PILES

No. Req'd.	W.Appr.	E.Appr.
17	4	4
Length	17	34

ELEVATION

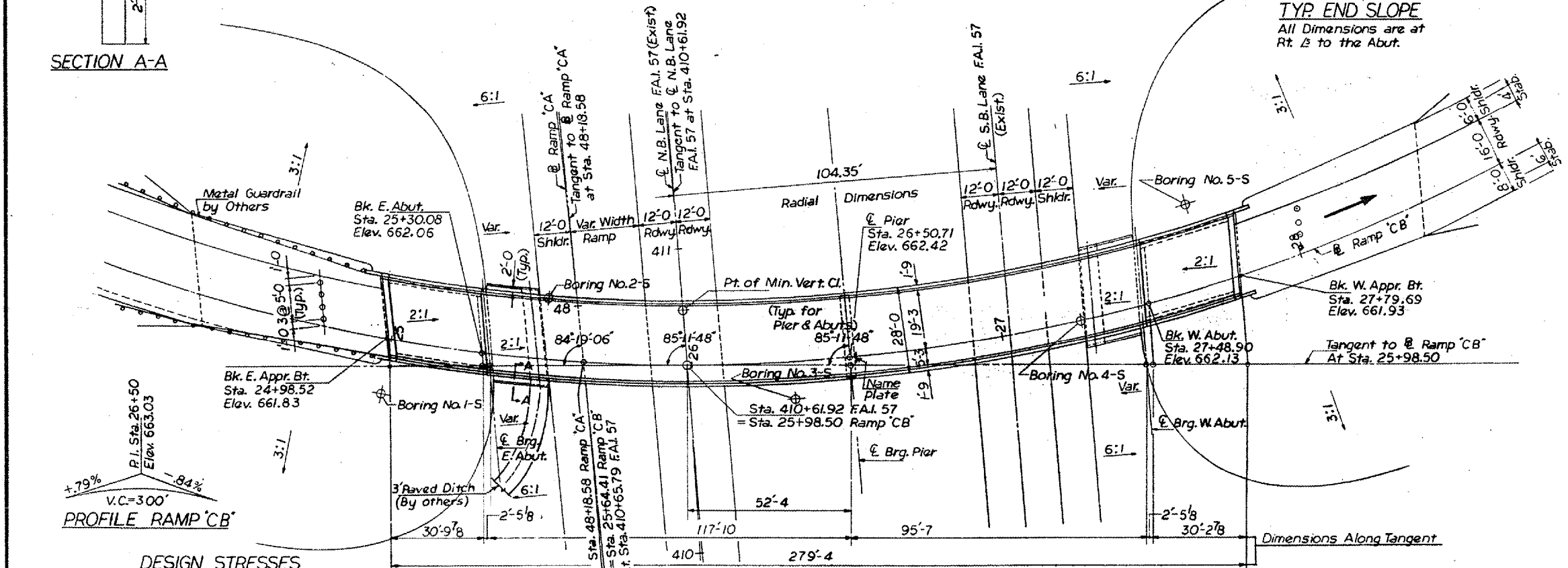


SECTION A-A



TYP. END SLOPE
All Dimensions are at Rt. & to the Abut.

- ALL REINFORCEMENT BARS SHALL BE LAPPED 24 DIAMETERS UNLESS OTHERWISE SHOWN.
- FASTENERS SHALL BE HIGH STRENGTH BOLTS. BOLTS 3/4" Ø, OPEN HOLES 13/16" Ø, UNLESS OTHERWISE NOTED.
- CALCULATED WEIGHT OF STRUCTURAL STEEL 304620 LBS.
- THE BASIC LEAD SILICO CHROMATE PAINT SYSTEM SHALL BE USED FOR SHOP AND FIELD PAINTING OF STRUCTURAL STEEL.
- FIELD WELDING OF CONSTRUCTION ACCESSORIES WILL NOT BE PERMITTED TO THE BOTTOM FLANGE OF GIRDERS NOR TO THE TOP FLANGE FOR A DISTANCE EQUAL TO ONE-FOURTH THE SPAN LENGTH EACH WAY FROM THE PIER SUPPORTS. FIELD WELDING IN OTHER AREAS WILL BE PERMITTED ONLY WHEN APPROVED BY THE ENGINEER.
- ANCHOR BOLTS SHALL BE SET BEFORE BOLTING CROSS FRAMES OVER SUPPORTS.
- SLOPE WALL SHALL BE REINFORCED WITH WELDED WIRE FABRIC 6" X 6" MESH, WEIGHING 5# PER 100 SQ. FT.
- THE CONTRACTOR SHALL DRIVE ONE STEEL TEST FILE IN A PERMANENT LOCATION AT EACH ABUTMENT AS DIRECTED BY THE ENGINEER BEFORE ORDERING THE REMAINDER OF PILES.
- AN ALTERNATE STRAND PATTERN USING EXTRA HIGH STRENGTH PRESTRESSING STRAND (270K.S.I.) IS PERMITTED.
- THE EMBANKMENT CONFIGURATION SHOWN SHALL BE THE MINIMUM EMBANKMENT THAT MUST BE CONSTRUCTED PRIOR TO CONSTRUCTION OF THE ABUTMENTS.
- THE CONCRETE RAIL SECTION ABOVE THE MANDATORY CONSTRUCTION JOINT AT THE TOP OF THE SLAB SHALL BE CONSTRUCTED OF CLASS X CONCRETE, EXCEPT THE AGGREGATES SHALL CONFORM TO THE REQUIREMENTS OF HANDRAIL CONCRETE.



PLAN

BILL OF MATERIAL

ITEM	UNIT	SUB-STRUCT	SUPER-STRUCT	TOTAL
Rock Excavation for Structures	Cu.Yds.	7.4		7.4
Structure Excavation	Cu.Yds.	169		169
Furnishing & Erecting Structural Steel	L.S.		.5	.5
Aluminum Railing	Lin.Ft.		552	552
Class X Concrete	Cu.Yds.	237.7	284.3	519.0
Reinforcement Bars	Lbs.	25,030	66,800	91,830
Protective Coat	Sq.Yds.		981	981
Steel Piles (BBP36)	Lin.Ft.	1,008		1,008
Creosoted Piles, up to 20'	Lin.Ft.	68		68
Creosoted Piles, 20.1 to 38'	Lin.Ft.	136		136
Test Piles, Steel (BBP36)	Each	2		2
Name Plates	Each	1		1
Slope Wall, 4'	Sq.Yds.	164		164
Bridge Seat Sealer	L.S.	.5		.5
Furnishing and Erecting P.R.C. Beams, 36"	Lin.Ft.		126	126

DESIGN STRESSES

FIELD UNITS
 $f_c = 1200$ psi. - Deck Slab
 $f_c = 1400$ psi. - Curb, Parapet, Sub.
 $f_s = 20,000$ psi. - Reinf.
 $f_s = 20,000$ psi. - Struct.
 $v_c = 75$ p.s.l. Ftgs.
 $n = 10$

PRECAST PRESTRESSED UNITS
 $f_c = 5000$ psi.
 $f_c = 4000$ psi.
 $f_s = 248,000$ psi. - Strands
 $f_s = 173,600$ psi. - Strands

STATION 25+98.50
BUILT BY
STATE OF ILLINOIS
F.A.I. RT. 24 SEC. XI-2HB-2
F.A. PROJ. 1-24-(32)0
LOADING HS20

NAME PLATE
STANDARD 2113

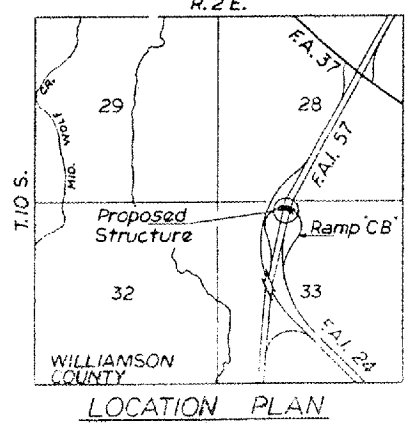
PAVEMENT ELEVATIONS

STATION	Edge of Paved Shoulder	Edge of Pav't.	Edge of Paved Shoulder
408	633.41	633.86	633.81
409	635.49	635.76	635.74
410	637.17	637.55	637.55
411	638.77	639.16	639.17
412	640.06	640.53	640.59
413	641.35	642.01	641.91

EXISTING F.A.I. 57 PAVEMENT ELEVATIONS

CURVE DATA

Curve	P.I.	Curve No.	Δ	D	R	T	L
E.N.B. Lane F.A.I. 57	419+75.42	1	19°-16'-30"	0°-28'-00"	12,277.70	2084.88	4130.36
Ramp CA	52+01.42	2	7°-23'-50"	0°-28'-05"	12,238.72	791.14	11580.07
Ramp CB	30+61.92	4	112°-33'-47"	9°-57'-52"	575.00	861.58	1129.64



LOCATION PLAN



BRIDGE NO. 5
S.N. 100-0059
FOR INFORMATION ONLY

TORNROSE, CAMPBELL & ASSOCIATES
CHICAGO, ILLINOIS

F.A.I. ROUTE 24

PROJECT	SECTION
WILLIAMSON COUNTY	SECTION XI-2HB-2
GENERAL PLAN & ELEVATION	STATION 25+98.50

Designed By: L.P. Drawn By: W.C. Quantities By: H.M.
Checked By: L.P. Checked By: H.M. Checked By: L.P.