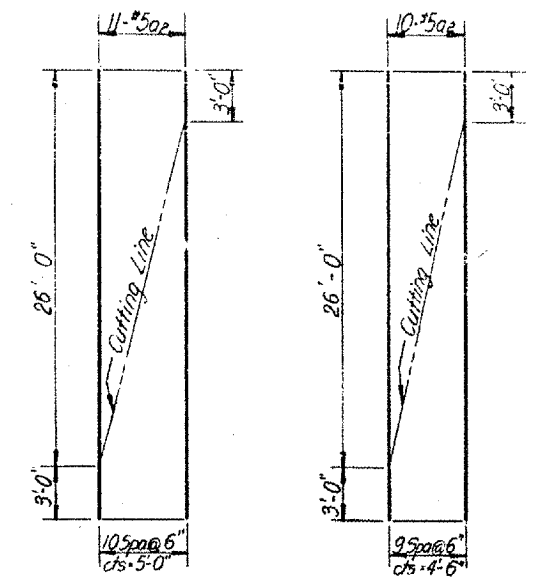
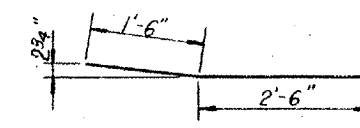


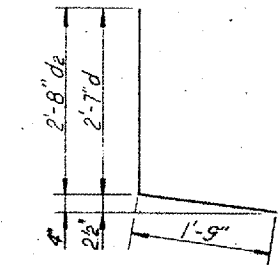
CROSS SECTION - SPAN 2&3



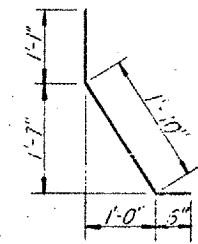
CUTTING DIAGRAM "A" CUTTING DIAGRAM "B"



BAR a3

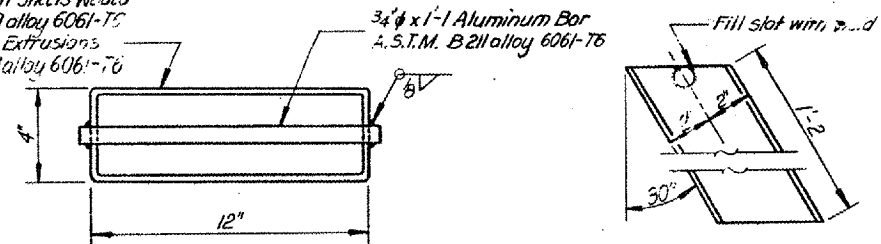


BARS d & d2

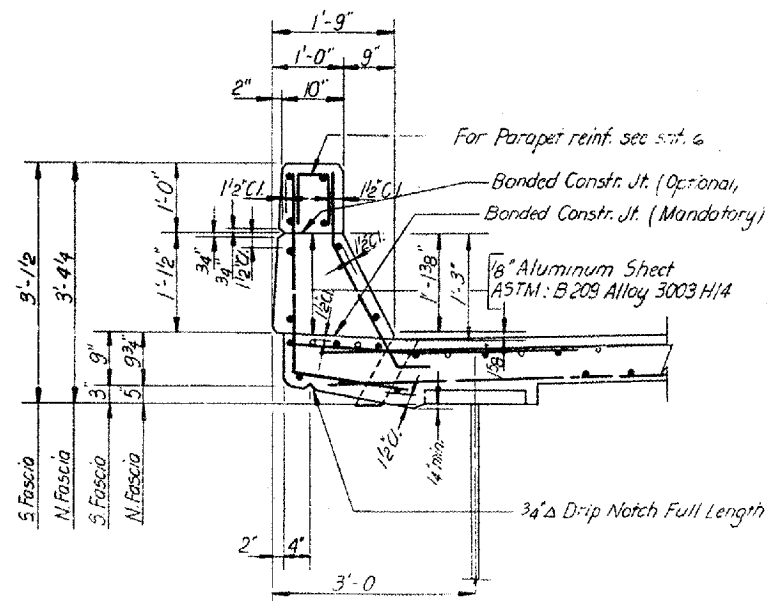


BAR d1

3/16" Aluminum Sheets Welded
A.S.T.M. B.209 alloy 6061-T5
or Aluminum Extrusions
A.S.T.M. B.221 alloy 6061-T6

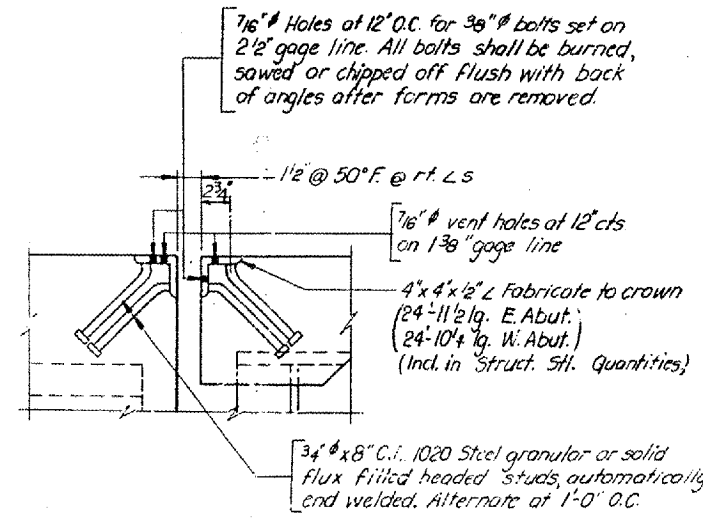


CORNER DETAIL



CURB SECTION

Cost of Aluminum...
... incidental costs & concrete



SECTION A-A
THRU DECK JOINT AT ABUTMENT

a	216	#6	4'-0"
a1	864	#5	26'-0"
a2	21	#5	29'-0"
a3	216	#6	4'-0"
b	8	#8	17'-2"
b1	8	#5	17'-2"
b2	12	#8	35'-0"
b3	8	#8	40'-6"
b4	16	#5	26'-4"
b5	12	#5	27'-2"
b6	480	#5	28'-3"
b7	29	#6	12'-0"
b8	29	#6	34'-0"
d	216	#4	4'-4"
d1	432	#5	3'-5"
d2	216	#4	4'-5"
Reinforcement Bars	Lbs.	48890	
Class X Concrete	Cu. Yds.	190.6	
Structural Steel	Lbs.	304620	

* Weight of bearing assemblies with lead plates and anchor bolts are included as structural steel.
Est. Weight = 4,740 Lbs.

The Lengths & Quantities of Reinforcement and Class X Concrete in Parapets are not included in above Quantities.
Work this sheet with sheet 2.

BRIDGE NO. 5
S.N. 100-0059
FOR INFORMATION ONLY

ILLINOIS DIVISION OF HIGHWAYS		
F.A.I. ROUTE 24		
PROJECT	SECTION XI-2 HB-2	
WILLIAMSON COUNTY		
DECK DETAILS		
Designed By: HM	Drawn By: EK	Quantities By: EM
Checked By: WF	Checked By: LP	Checked By: LP