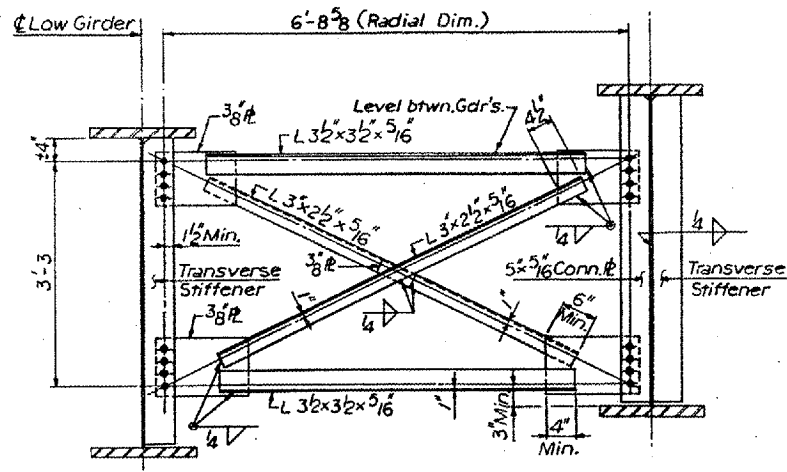
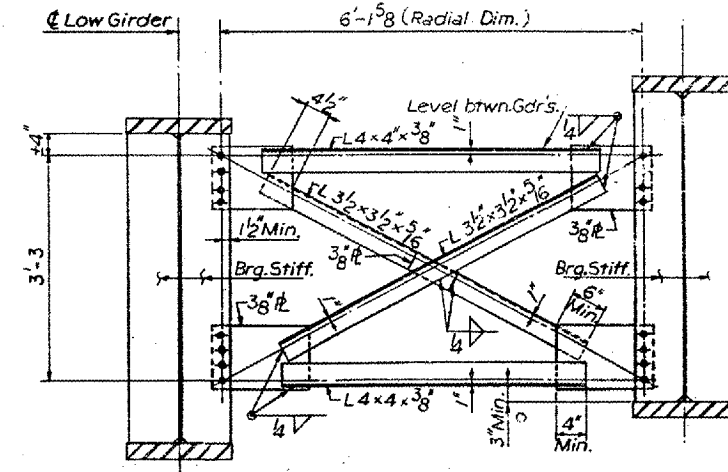


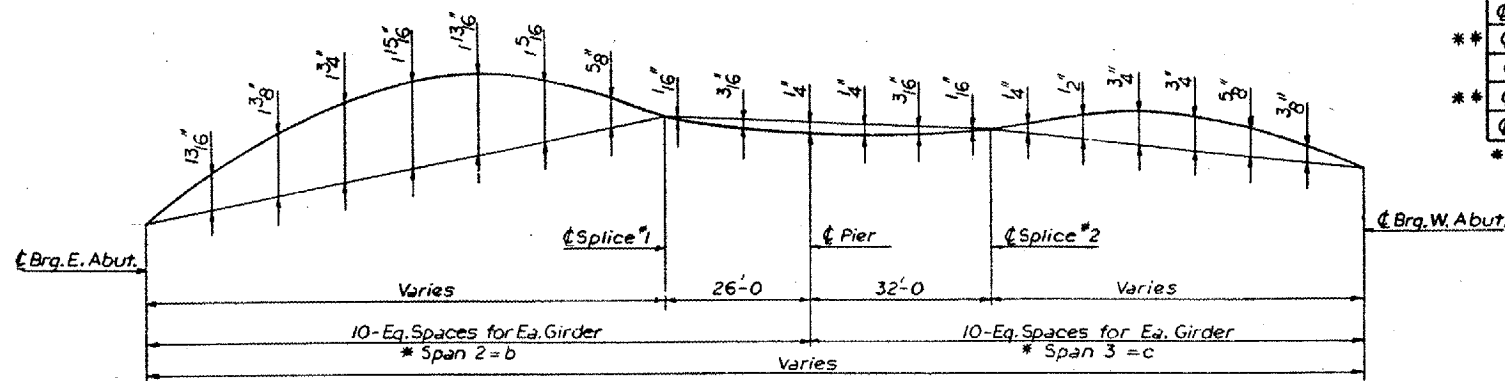
END CROSS FRAME



TYPICAL INTERIOR CROSS FRAME CF1



CROSS FRAME CF2 AT PIER



CAMBER DIAGRAM

* Note:
For Dim. b & c see Table of Dimensions sht.

ELEVATION TOP OF STEEL GIRDER WEBS				
Girder No.	1	2	3	4
Brq. E. Abut.	659.657	660.233	660.828	661.424
* * Brq. Splice #1	660.045	660.654	661.240	661.828
Brq. Pier	660.022	660.588	661.174	661.761
* * Brq. Splice #2	659.992	660.602	661.188	661.776
Brq. W. Abut.	659.851	660.424	661.018	661.612

* * Adjusted for camber (vertical curve & Dead Load Deflection due to weight of concrete & steel.)

BRIDGE NO. 5
S.N. 100-0059
FOR INFORMATION ONLY

ILLINOIS DIVISION OF HIGHWAYS		
F. A. I. ROUTE 24		
PROJECT SECTION XI-2HB-2		
WILLIAMSON COUNTY		
STEEL GIRDER AND FRAMING DETAILS		
Designed By:	Drawn By: E. M.	Quantities By: K.R.S.
Checked By:	Checked By: W. J. F.	Checked By: W. J. F.