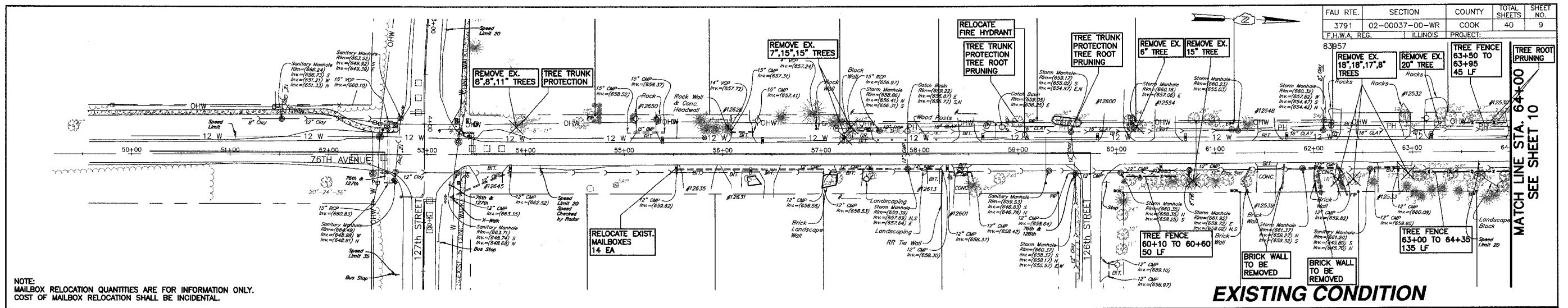
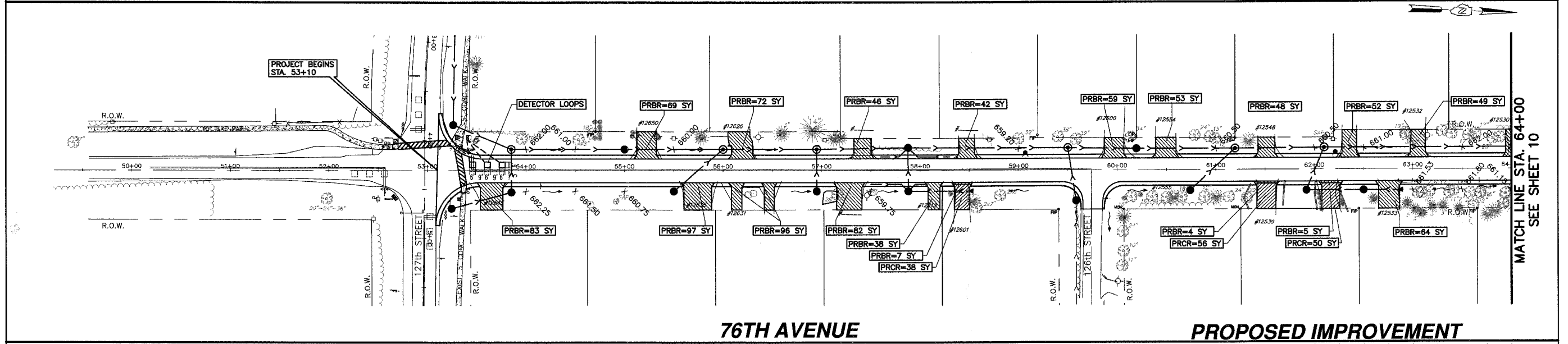


FAU RTE.	SECTION	COUNTY	TOTAL SHEETS	SHEET NO.
3791	02-00037-00-WR	COOK	40	9
F.H.W.A. REG.	ILLINOIS	PROJECT:		



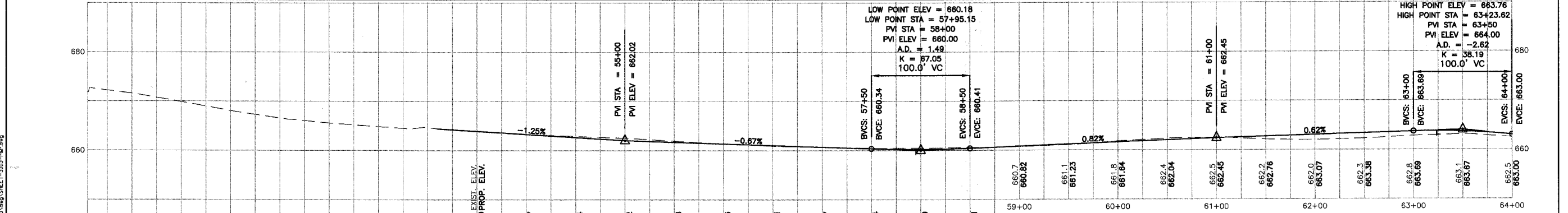
NOTE:  
MAILBOX RELOCATION QUANTITIES ARE FOR INFORMATION ONLY.  
COST OF MAILBOX RELOCATION SHALL BE INCIDENTAL.

**EXISTING CONDITION**



**76TH AVENUE**

**PROPOSED IMPROVEMENT**



PLOT DATE: SEP 24, 2007  
 FILENAME: I:\04-PH\3003\PLANS-ENG\REV-3\WIND SHEET-3003-P&P.dwg

**MORRIS ENGINEERING, INC.**  
 5100 LINCOLN AVE LISLE, ILLINOIS 60532  
 PHONE: (630) 271-0770 • WEBSITE: ECIVIL.COM

**76TH AVENUE RECONSTRUCTION  
 127TH STREET TO ILLINOIS ROUTE 83  
 PLAN & PROFILE - 76TH AVENUE  
 STA. 53+00 TO STA. 64+00**

LOCATION: H:\04-PH\3003\PLANS-ENG\REV-3\dwg\SHEET-3003-P&P.dwg  
 DRAWN BY: CJS DESIGN BY: RAC CHECKED BY: JJV  
 JOB NO.: 04-PH-3003 SCALE: 1"=50' H 1"=10' V

DATE	REVISIONS	BY	SHEET
1 5-09-07	PER IDOT REVIEW	RAC	9
2 5-24-07	PER IDOT REVIEW	RAC	
3 9-04-07	PER IDOT REVIEW	RAC	
4			

OF 40 SHEETS