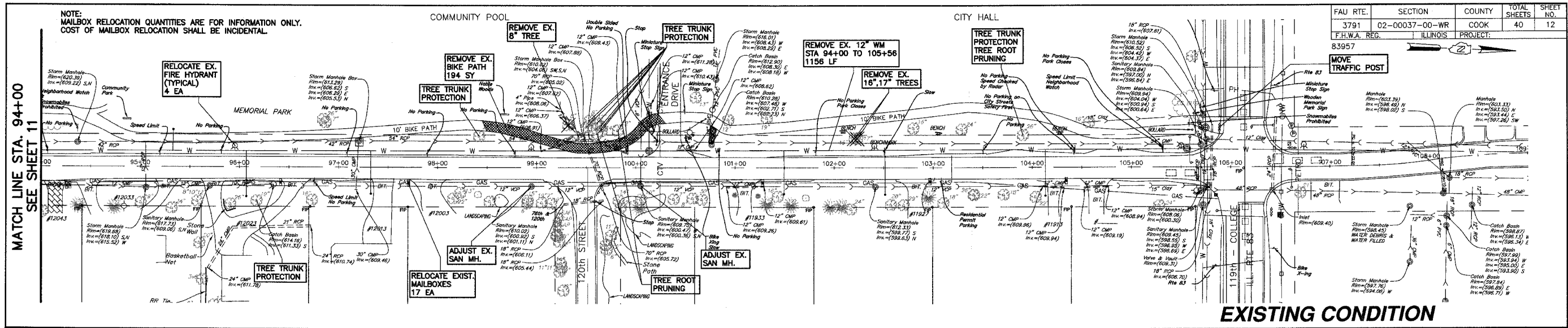


NOTE:
MAILBOX RELOCATION QUANTITIES ARE FOR INFORMATION ONLY.
COST OF MAILBOX RELOCATION SHALL BE INCIDENTAL.

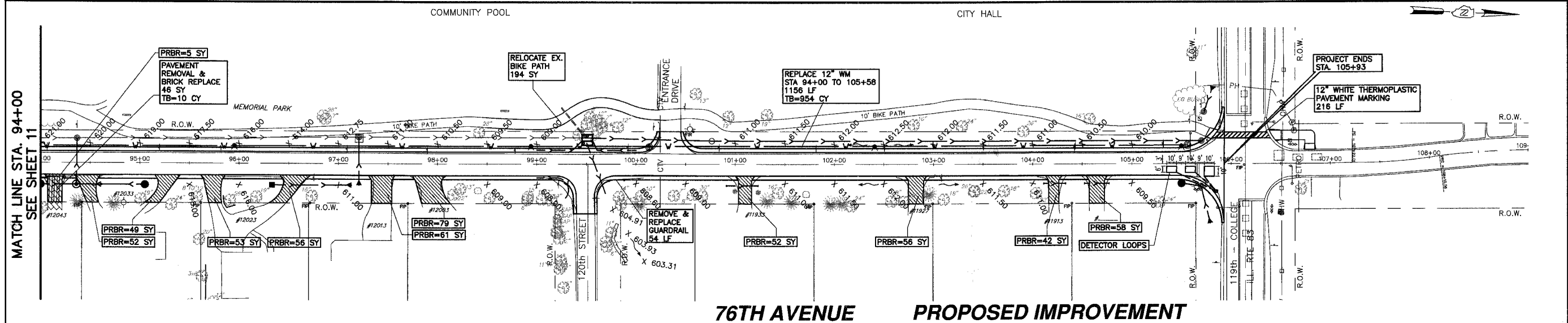
FAU RTE.	SECTION	COUNTY	TOTAL SHEETS	SHEET NO.
3791	02-00037-00-WR	COOK	40	12
F.H.W.A. REG.	ILLINOIS	PROJECT:		
83957				

MATCH LINE STA. 94+00
SEE SHEET 11

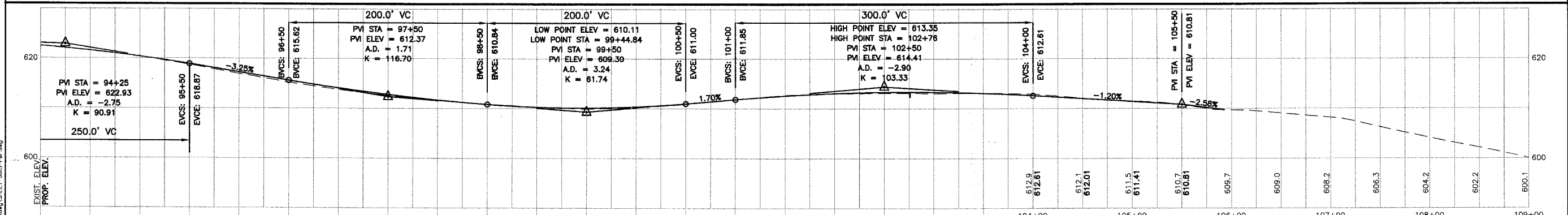


EXISTING CONDITION

MATCH LINE STA. 94+00
SEE SHEET 11



76TH AVENUE PROPOSED IMPROVEMENT



PLOT DATE: SEP 04 2007
FILENAME: I:\04-PH\3003\PLANS-ENG\REV-3\DWG\SHEET-3003-P&P.dwg

MORRIS ENGINEERING, INC.
5100 LINCOLN AVE Lisle, ILLINOIS 60532
PHONE: (630) 271-0770 WEBSITE: ECIVIL.COM

LOCATION: H:\04-PH\3003\PLANS-ENG\REV-3\DWG\SHEET-3003-P&P.dwg
DRAWN BY: CJS DESIGN BY: RAC CHECKED BY: JJV
JOB NO.: 04-PH-3003 SCALE: 1"=50' H 1"=10' V

**76TH AVENUE RECONSTRUCTION
127TH STREET TO ILLINOIS ROUTE 83
PLAN & PROFILE - 76TH AVENUE
STA. 94+00 TO STA. 109+00**

DATE	REVISIONS	BY	SHEET
1 5-09-07	PER IDOT REVIEW	RAC	12 OF 40 SHEETS
2 5-24-07	PER IDOT REVIEW	RAC	
3 9-04-07	PER IDOT REVIEW	RAC	
4			