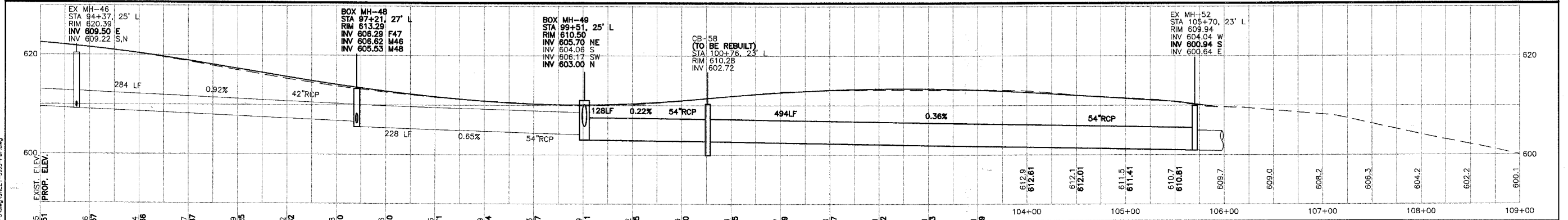
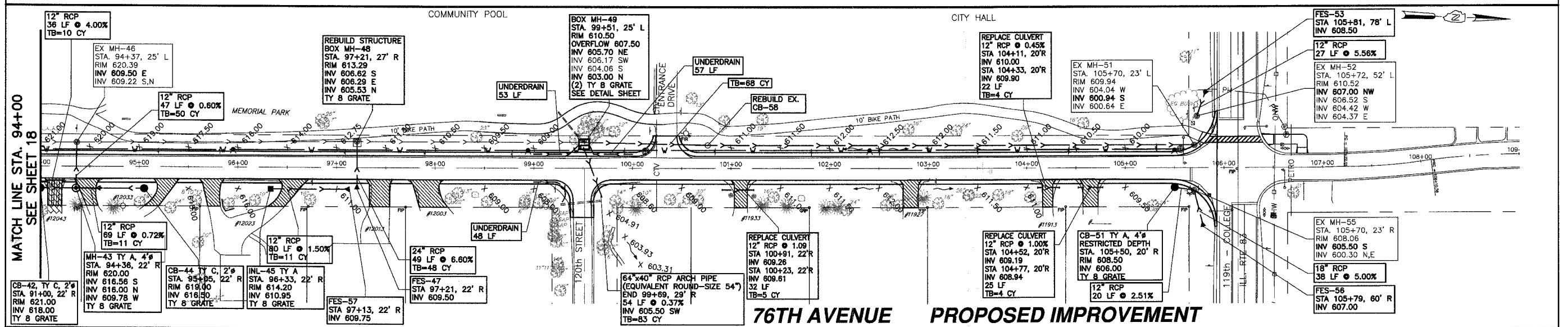
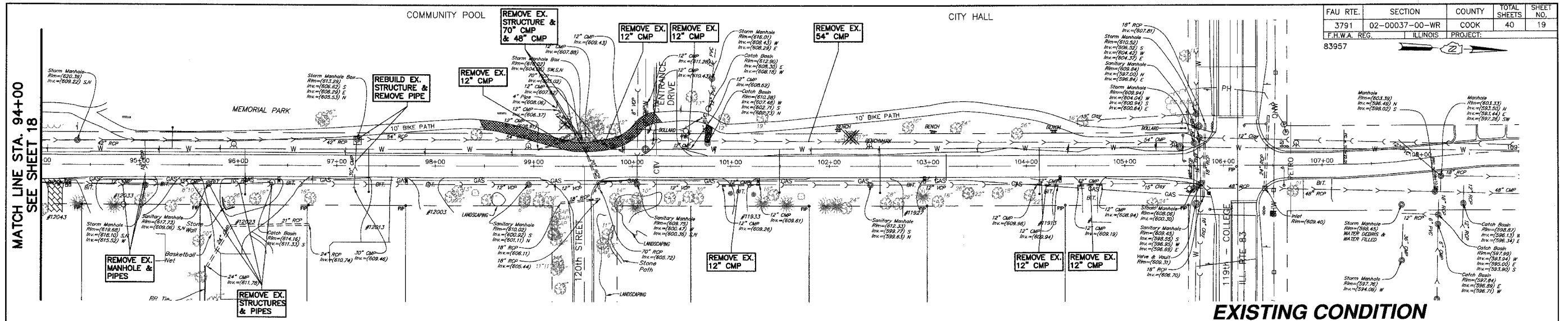


FAU RTE.	SECTION	COUNTY	TOTAL SHEETS	SHEET NO.
3791	02-00037-00-WR	COOK	40	19
F.H.W.A. REG.	ILLINOIS PROJECT			



PLOT DATE: Sep 05, 2007  
 FILENAME: I:\04-PH-3003\PLANS-ENG\REV-3\DWG\SHEET-3003-P&P.dwg

**MORRIS ENGINEERING, INC.**  
 5100 LINCOLN AVE LISLE, ILLINOIS 60532  
 PHONE: (630) 271-0770 WEBSITE: ECWIL.COM

**76TH AVENUE RECONSTRUCTION**  
**127TH STREET TO ILLINOIS ROUTE 83**  
**DRAINAGE PLAN & PROFILE - 76TH AVENUE**  
**STA. 94+00 TO STA. 109+00**

LOCATION: H:\04-PH-3003\PLANS-ENG\REV-3\DWG\SHEET-3003-P&P.dwg  
 DRAWN BY: CJS DESIGN BY: RAC CHECKED BY: JJV  
 JOB NO.: 04-PH-3003 SCALE: 1"=50' H 1"=10' V

DATE	REVISIONS	BY	SHEET
1	5-09-07	PER IDOT REVIEW	RAC
2	5-24-07	PER IDOT REVIEW	RAC
3	9-04-07	PER IDOT REVIEW	RAC
4			

19

OF 40 SHEETS