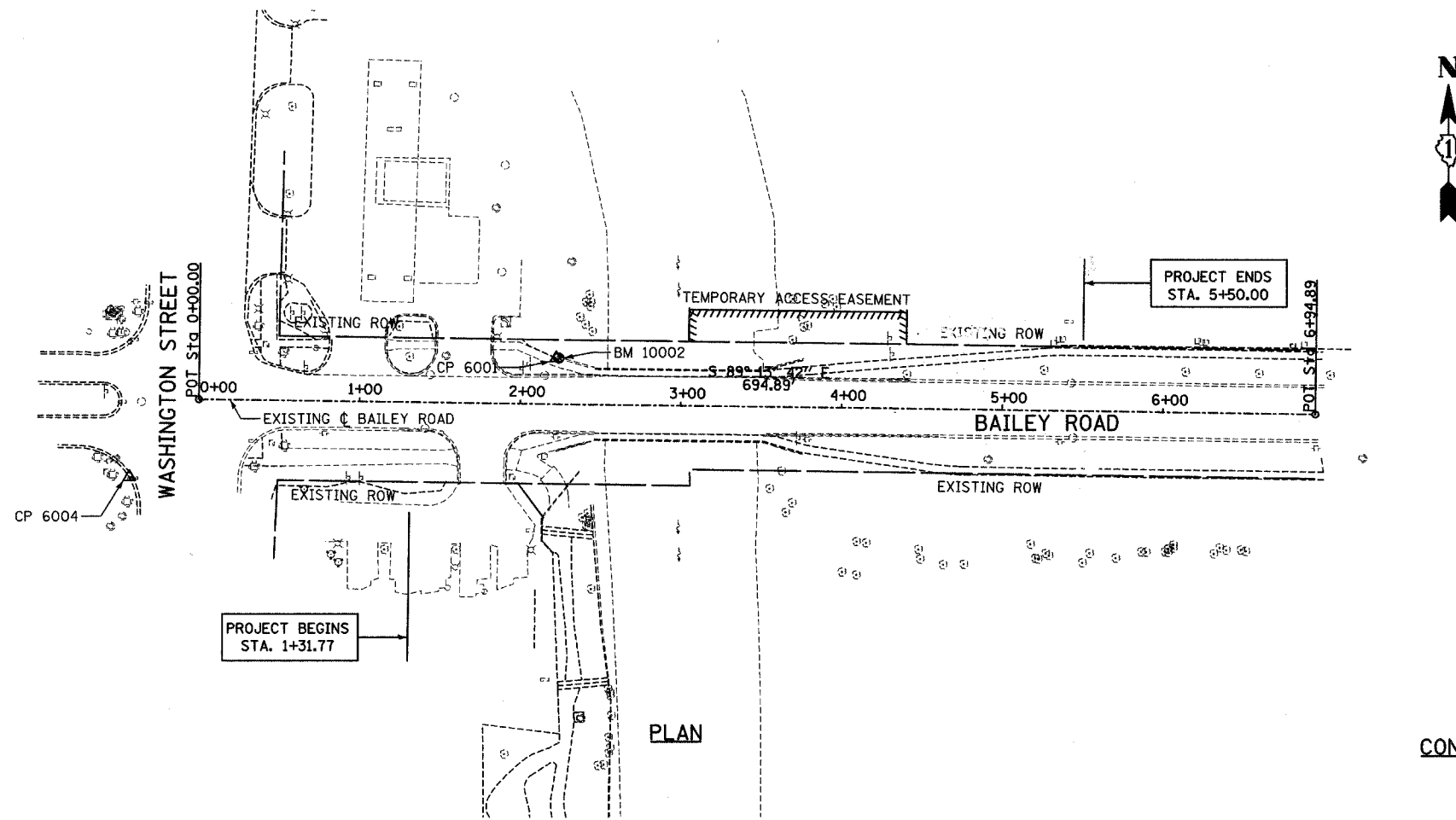


F.A.U. RTE.	SECTION	COUNTY	TOTAL SHEETS	SHEET NO.
1545	00-00115-00-BR	DUPAGE	97	8
STA. 1+31.77		TO STA. 5+50.00		
FED. ROAD DIST. NO.		ILLINOIS	FED. AID PROJECT	
CONTRACT 83961				

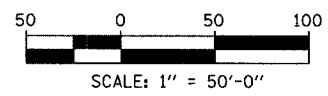
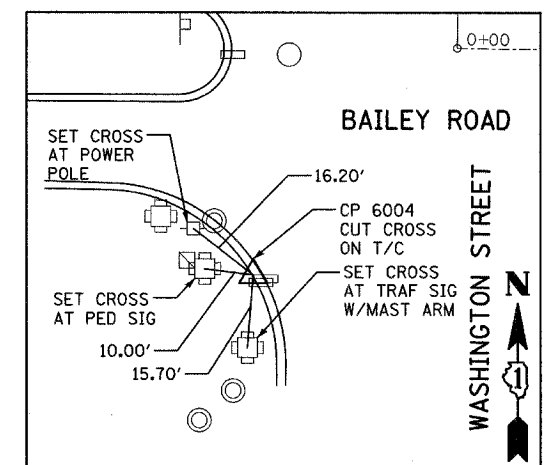
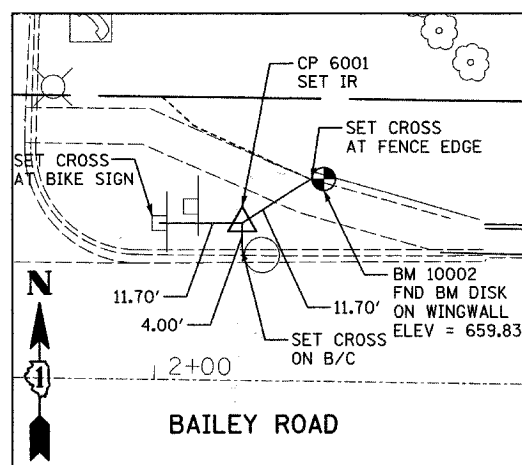


ALIGNMENT
(N 1,848,180.8320 E 1,040,358.5550)
Sta 0+00.00
S 89° 13' 41.8560" E
Dist 694.8850
(N 1,848,171.4730 E 1,041,053.3770)
Sta 6+94.89

PROJECT BENCHMARK
BM-10002 - DUPAGE COUNTY BENCHMARK *LI 32001 IN NORTHWEST WINGWALL OF BAILEY ROAD BRIDGE OVER WEST BRANCH OF DUPAGE RIVER. ELEV. 659.83 (NGVD 29)
THE CONTRACTOR WILL BE REQUIRED TO REPLACE *LI 32001 WITH A NEW ELEVATION IN THE PROPOSED NORTHWEST WINGWALL (SEE SPECIAL PROVISIONS).


CONTROL POINT #6001
N: 1848200.320
E: 1040571.000
EL: 657.270

CONTROL POINT #6004
N: 1848132.505
E: 1040315.240
EL: 657.666



REVISIONS	
NAME	DATE

BRIDGE REHABILITATION
BAILEY ROAD OVER
WEST BRANCH OF THE DUPAGE RIVER
ALIGNMENT AND SURVEY TIES
FOR CONTROL POINTS
CONSULTANT
TYLIN INTERNATIONAL

City of  **Naperville**

DRAWN: RTM	SHEET NO.
CHECKED: SP	8
APPROVED:	
DATE: JULY 13, 2007	
SCALE: 1"=50'-0"	
JOB NO.: C-91-062-04	PROJECT NO.: BHM-8003(343)