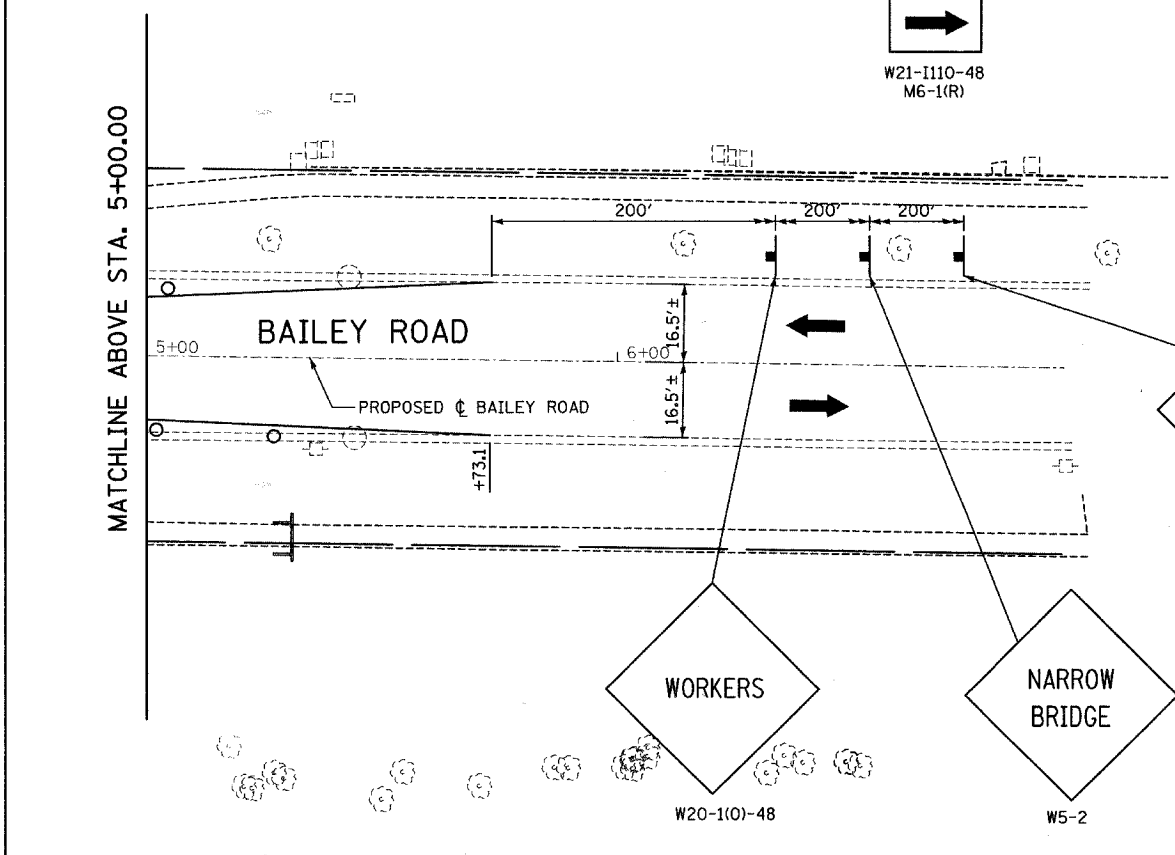
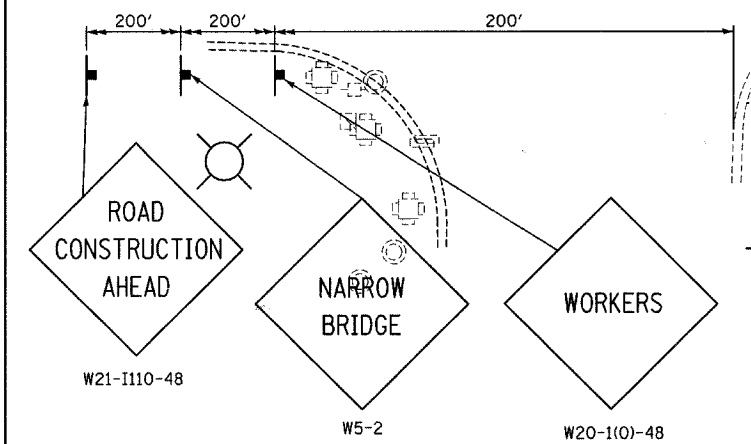
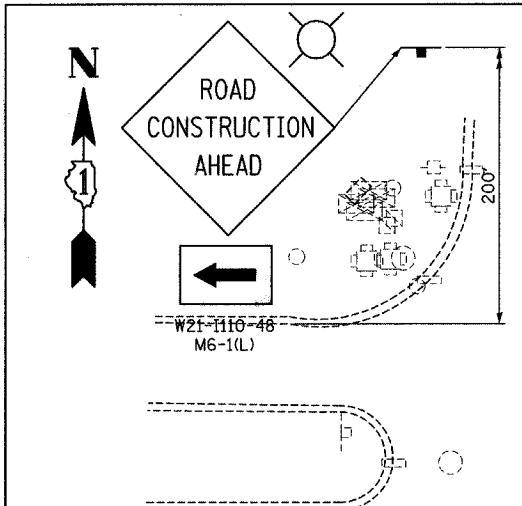
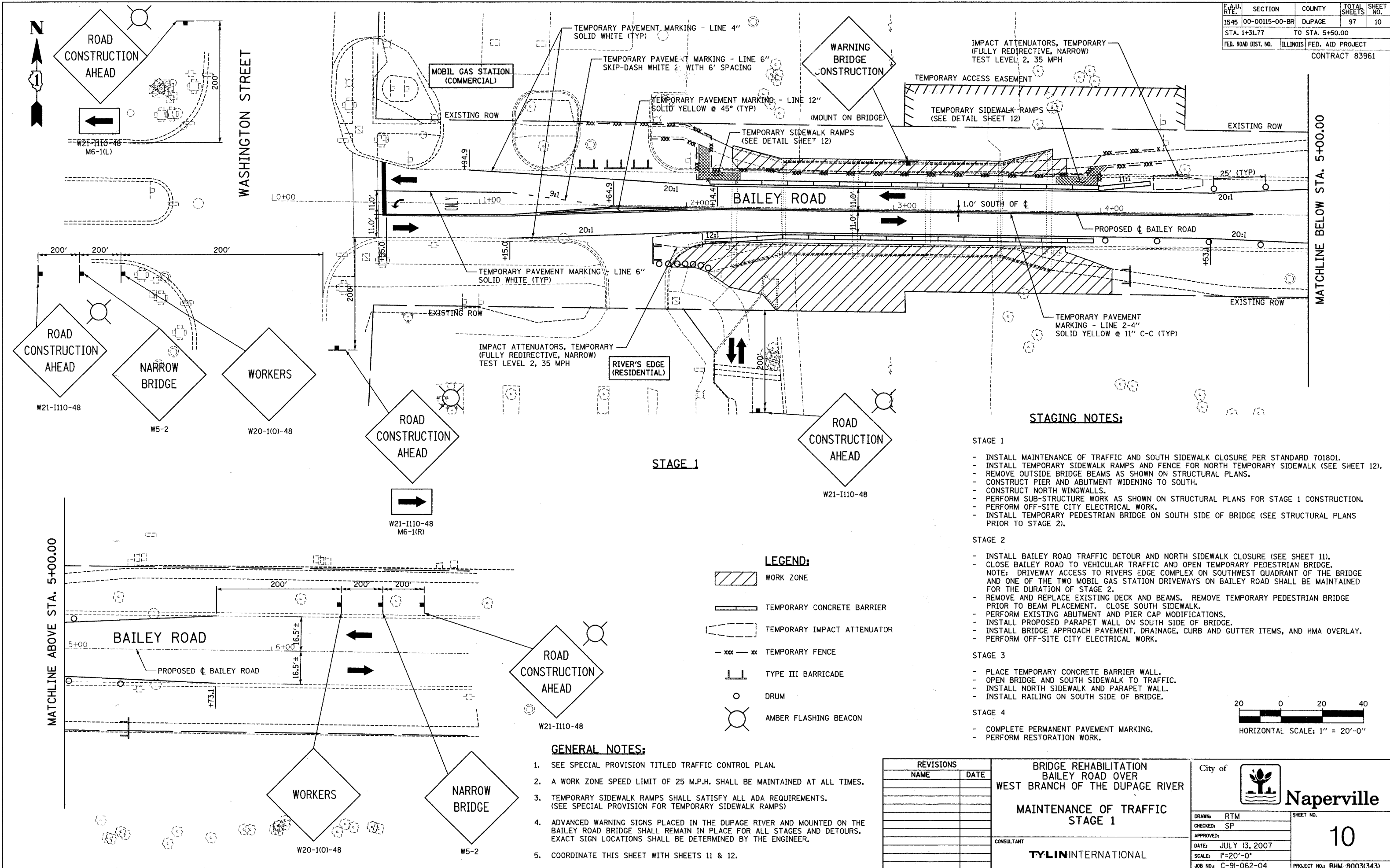


F.A.U. RTE.	SECTION	COUNTY	TOTAL SHEETS	SHEET NO.
1545	00-00115-00-BR	DUPAGE	97	10
STA. 1+31.77		TO STA. 5+50.00		
FED. ROAD DIST. NO.	ILLINOIS	FED. AID PROJECT		
		CONTRACT 83961		



STAGE 1

STAGING NOTES:

- STAGE 1**
- INSTALL MAINTENANCE OF TRAFFIC AND SOUTH SIDEWALK CLOSURE PER STANDARD 701801.
 - INSTALL TEMPORARY SIDEWALK RAMP AND FENCE FOR NORTH TEMPORARY SIDEWALK (SEE SHEET 12).
 - REMOVE OUTSIDE BRIDGE BEAMS AS SHOWN ON STRUCTURAL PLANS.
 - CONSTRUCT PIER AND ABUTMENT WIDENING TO SOUTH.
 - CONSTRUCT NORTH WINGWALLS.
 - PERFORM SUB-STRUCTURE WORK AS SHOWN ON STRUCTURAL PLANS FOR STAGE 1 CONSTRUCTION.
 - PERFORM OFF-SITE CITY ELECTRICAL WORK.
 - INSTALL TEMPORARY PEDESTRIAN BRIDGE ON SOUTH SIDE OF BRIDGE (SEE STRUCTURAL PLANS PRIOR TO STAGE 2).
- STAGE 2**
- INSTALL BAILEY ROAD TRAFFIC DETOUR AND NORTH SIDEWALK CLOSURE (SEE SHEET 11).
 - CLOSE BAILEY ROAD TO VEHICULAR TRAFFIC AND OPEN TEMPORARY PEDESTRIAN BRIDGE. NOTE: DRIVEWAY ACCESS TO RIVERS EDGE COMPLEX ON SOUTHWEST QUADRANT OF THE BRIDGE AND ONE OF THE TWO MOBIL GAS STATION DRIVEWAYS ON BAILEY ROAD SHALL BE MAINTAINED FOR THE DURATION OF STAGE 2.
 - REMOVE AND REPLACE EXISTING DECK AND BEAMS. REMOVE TEMPORARY PEDESTRIAN BRIDGE PRIOR TO BEAM PLACEMENT. CLOSE SOUTH SIDEWALK.
 - PERFORM EXISTING ABUTMENT AND PIER CAP MODIFICATIONS.
 - INSTALL PROPOSED PARAPET WALL ON SOUTH SIDE OF BRIDGE.
 - INSTALL BRIDGE APPROACH PAVEMENT, DRAINAGE, CURB AND GUTTER ITEMS, AND HMA OVERLAY.
 - PERFORM OFF-SITE CITY ELECTRICAL WORK.
- STAGE 3**
- PLACE TEMPORARY CONCRETE BARRIER WALL.
 - OPEN BRIDGE AND SOUTH SIDEWALK TO TRAFFIC.
 - INSTALL NORTH SIDEWALK AND PARAPET WALL.
 - INSTALL RAILING ON SOUTH SIDE OF BRIDGE.
- STAGE 4**
- COMPLETE PERMANENT PAVEMENT MARKING.
 - PERFORM RESTORATION WORK.

LEGEND:

	WORK ZONE
	TEMPORARY CONCRETE BARRIER
	TEMPORARY IMPACT ATTENUATOR
	TEMPORARY FENCE
	TYPE III BARRICADE
	DRUM
	AMBER FLASHING BEACON

GENERAL NOTES:

1. SEE SPECIAL PROVISION TITLED TRAFFIC CONTROL PLAN.
2. A WORK ZONE SPEED LIMIT OF 25 M.P.H. SHALL BE MAINTAINED AT ALL TIMES.
3. TEMPORARY SIDEWALK RAMP SHALL SATISFY ALL ADA REQUIREMENTS. (SEE SPECIAL PROVISION FOR TEMPORARY SIDEWALK RAMP)
4. ADVANCED WARNING SIGNS PLACED IN THE DUPAGE RIVER AND MOUNTED ON THE BAILEY ROAD BRIDGE SHALL REMAIN IN PLACE FOR ALL STAGES AND DETOURS. EXACT SIGN LOCATIONS SHALL BE DETERMINED BY THE ENGINEER.
5. COORDINATE THIS SHEET WITH SHEETS 11 & 12.

REVISIONS	
NAME	DATE

BRIDGE REHABILITATION
BAILEY ROAD OVER
WEST BRANCH OF THE DUPAGE RIVER

MAINTENANCE OF TRAFFIC
STAGE 1

CONSULTANT
TYLIN INTERNATIONAL

City of **Naperville**

DRAWN: RTM	SHEET NO.
CHECKED: SP	10
APPROVED:	
DATE: JULY 13, 2007	
SCALE: 1"=20'-0"	
JOB NO: C-91-062-04	PROJECT NO: BHM-9003(343)

