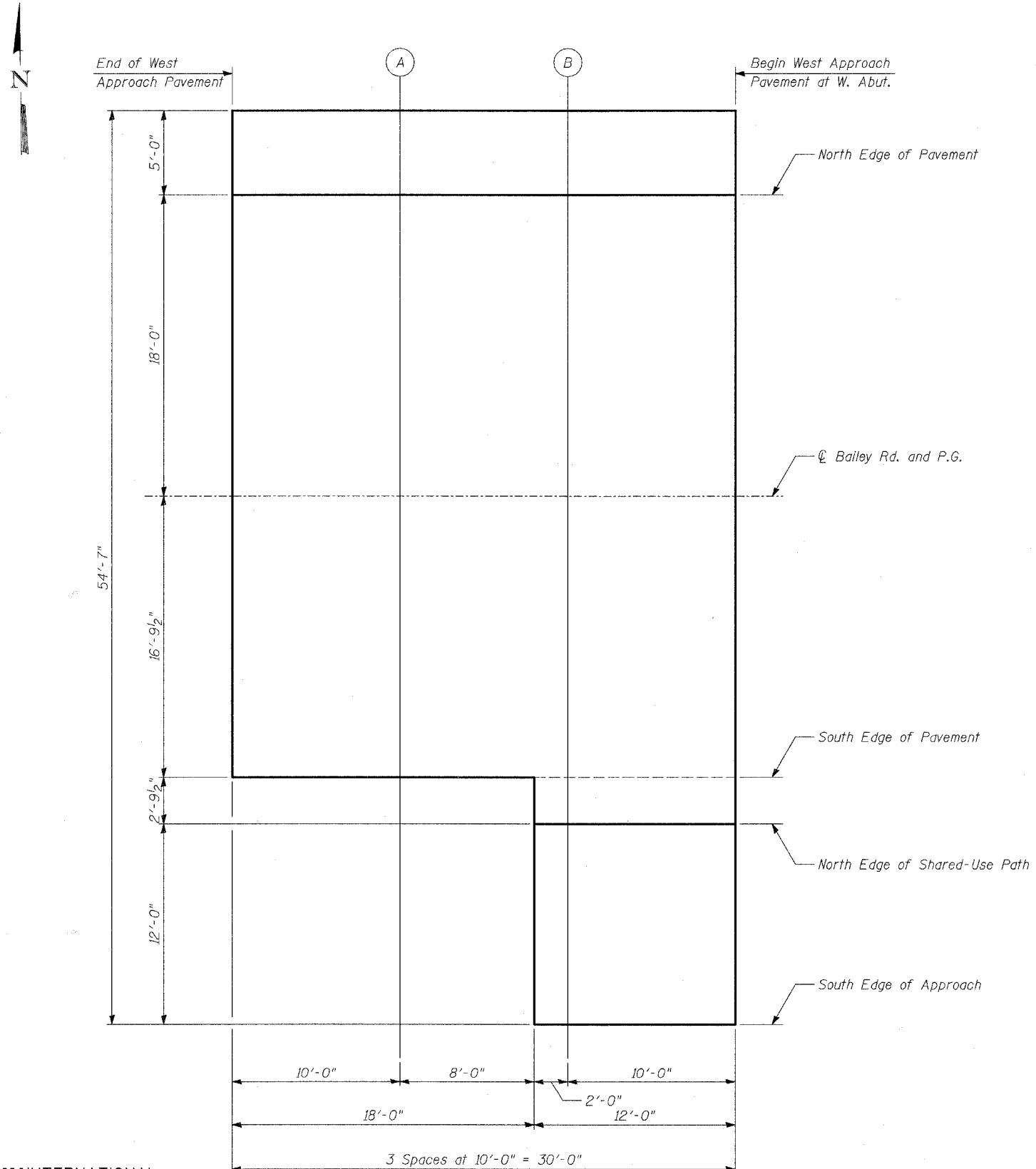


STATE OF ILLINOIS
DEPARTMENT OF TRANSPORTATION

ROUTE NO.	SECTION	COUNTY	TOTAL SHEETS	SHEET NO.	SHEET NO. - 10
1545	*	DUPAGE	97	31	39 - SHEETS
FED. ROAD DIST. NO.	ILLINOIS	FED. AID PROJECT	CONTRACT NO. 83961		
* 00-00115-00-BR					



PLAN

NORTH EDGE OF PAVEMENT

Location	Station	Offset	Theoretical Grade Elevations
End W. Appr. Pav't	2+15.15	-18.00	657.45
A	2+25.15	-18.00	657.54
B	2+35.15	-18.00	657.63
Begin W. Appr. Pav't	2+45.15	-18.00	657.71

CL BAILEY RD. AND P.G.

Location	Station	Offset	Theoretical Grade Elevations
End W. Appr. Pav't	2+15.15	0.00	657.82
A	2+25.15	0.00	657.88
B	2+35.15	0.00	657.94
Begin W. Appr. Pav't	2+45.15	0.00	657.99

SOUTH EDGE OF PAVEMENT

Location	Station	Offset	Theoretical Grade Elevations
End W. Appr. Pav't	2+15.15	16.79	657.47
A	2+25.15	16.79	657.56
B	2+35.15	16.79	657.65
Begin W. Appr. Pav't	2+45.15	16.79	657.73

NORTH EDGE OF SHARED-USE PATH

Location	Station	Offset	Theoretical Grade Elevations
End W. Appr. Pav't	2+15.15	19.58	N/A
A	2+25.15	19.58	N/A
B	2+35.15	19.58	657.60
Begin W. Appr. Pav't	2+45.15	19.58	657.68

SOUTH EDGE OF APPROACH

Location	Station	Offset	Theoretical Grade Elevations
End W. Appr. Pav't	2+15.15	31.58	N/A
A	2+25.15	31.58	N/A
B	2+35.15	31.58	657.36
Begin W. Appr. Pav't	2+45.15	31.58	657.50

TYLIN INTERNATIONAL

DESIGNED	- PL
CHECKED	- SNB
DRAWN	- PL
CHECKED	- SNB

**TOP OF WEST APPROACH
PAVEMENT ELEVATIONS**

BAILEY ROAD OVER THE
WEST BRANCH OF THE DUPAGE RIVER
FAU 1545
SECTION 00-00115-00-BR STA. 2+99.15
DUPAGE COUNTY
S.N. 022-3028