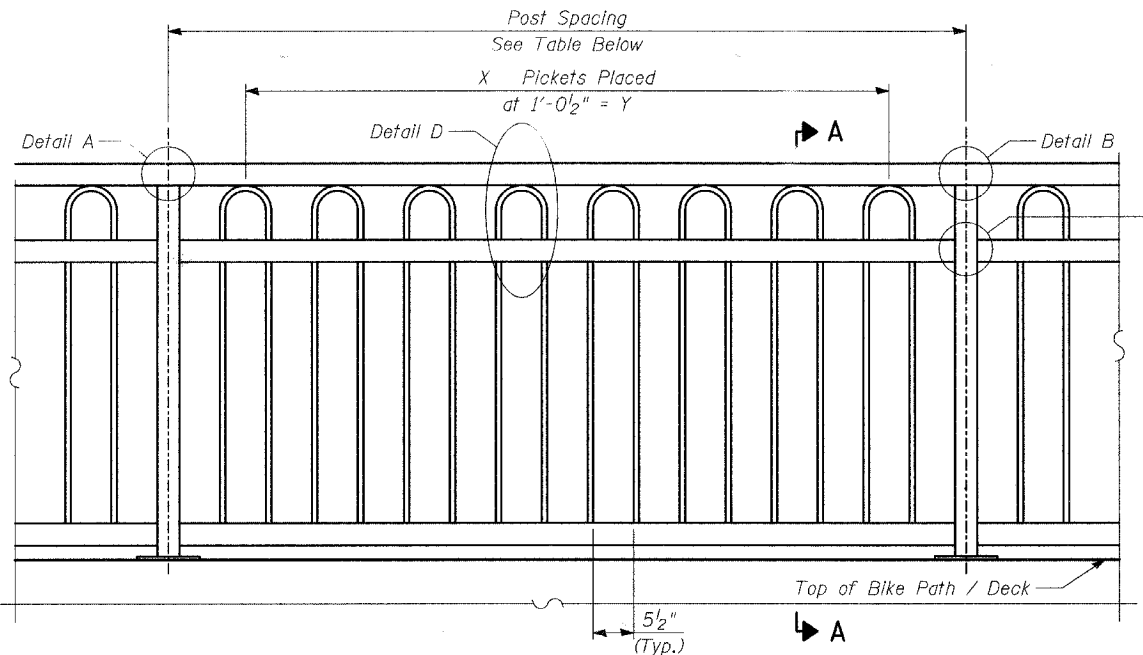
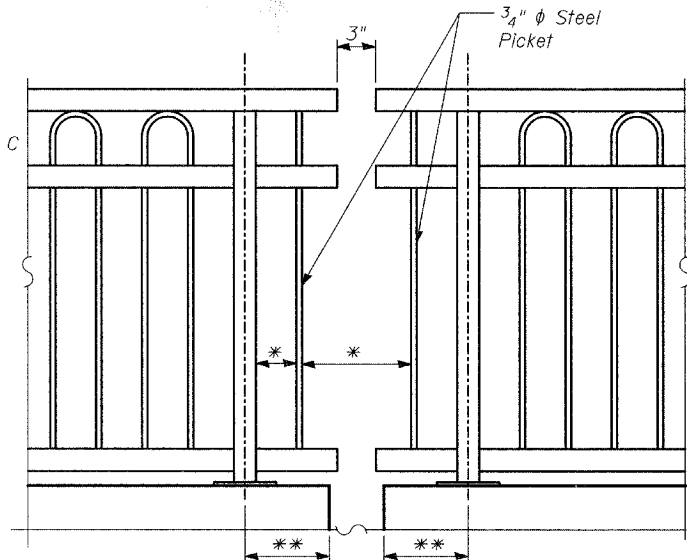


STATE OF ILLINOIS
DEPARTMENT OF TRANSPORTATION



ELEVATION - TYPICAL SECTION



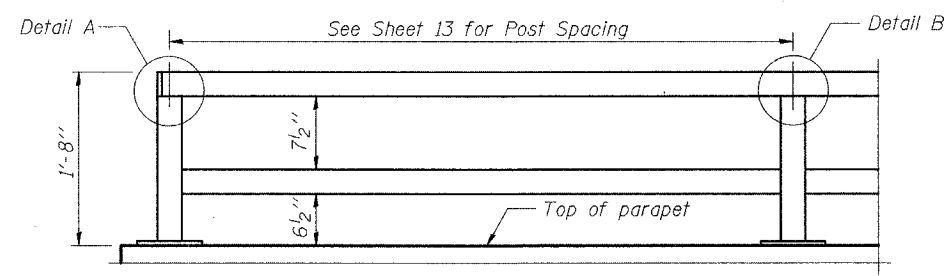
SECTION A-A

* Max Spacing is 6". Rail Fabricator shall add pickets as necessary.
** Varies - See Plans.

BICYCLE RAILING LAYOUT

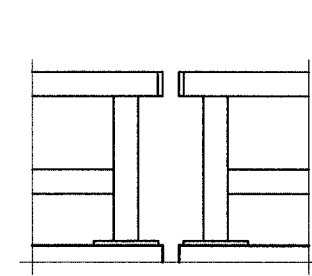
Post Spacing	Picket Layout	
	X	Y
5'-11"	5	4'-2"
6'-11 1/2"	6	5'-2 1/2"
8'-0"	7	6'-3"
9'-0 1/2"	8	7'-3 1/2"

(See Sheets 12, 23 & 26 for Layout)

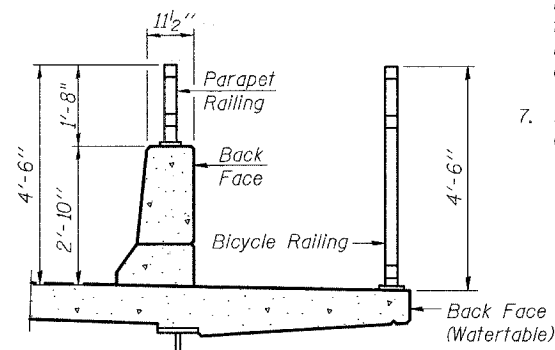


PARAPET RAILING
ELEVATION

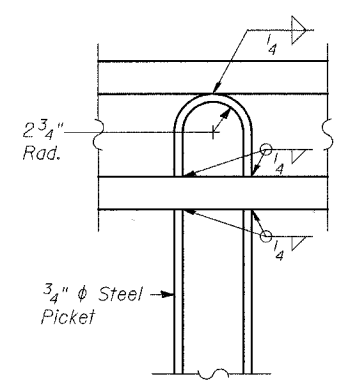
BICYCLE RAILING



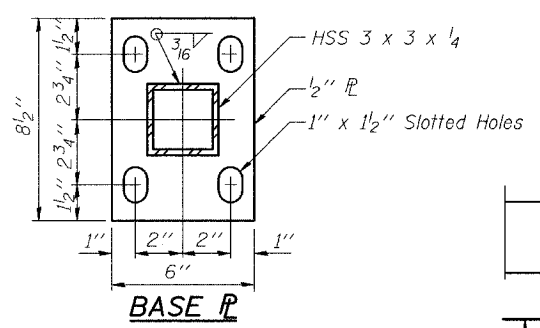
PARAPET RAILING
ELEVATION AT EXPANSION JOINT



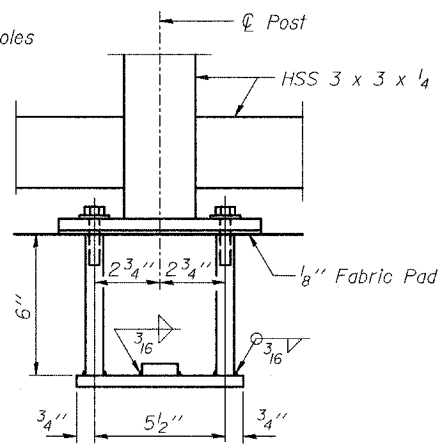
SECTION THRU DECK



DETAIL D

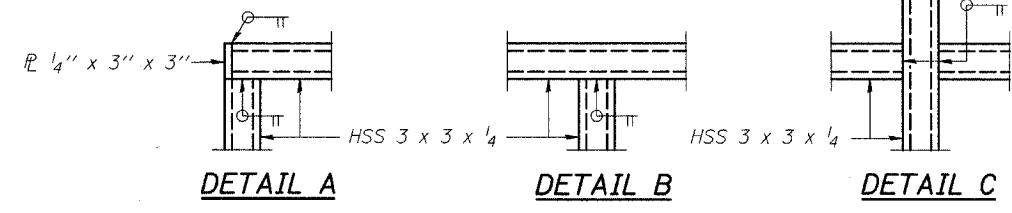


BASE PL



TYPICAL ANCHOR BOLT DETAILS

In lieu of the cast-in-place anchor device shown, the Contractor has the option of drilling and setting 5/8" φ anchor rods according to Article 509.06 of the Standard Specifications. Embedment shall be according to the manufacturer's specifications.



DETAIL A

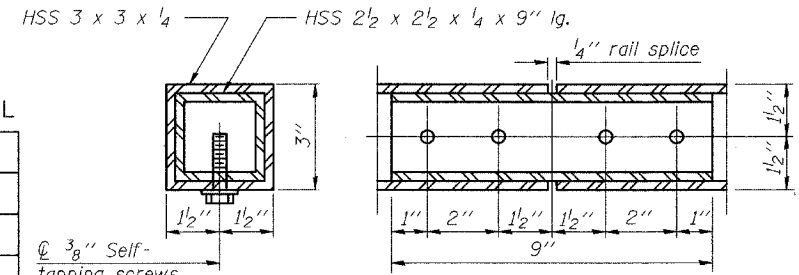
DETAIL B

DETAIL C

BILL OF MATERIAL

Item	Unit	Quantity
Bicycle Railing	Foot	142.3
Parapet Railing	Foot	150

(1) Additional Bicycle Railing on Sheet 21 of 95.



TYPICAL RAIL SPLICE DETAILS

TYLIN INTERNATIONAL

DESIGNED	- SNB
CHECKED	- PF
DRAWN	- SNB
CHECKED	- PF

3/8" Self-tapping screws

RAILING DETAILS

BAILEY ROAD OVER THE
WEST BRANCH OF THE DUPAGE RIVER
FAU 1545
SECTION 00-00115-00-BR STA. 2+99.15
DUPAGE COUNTY
S.N. 022-3028