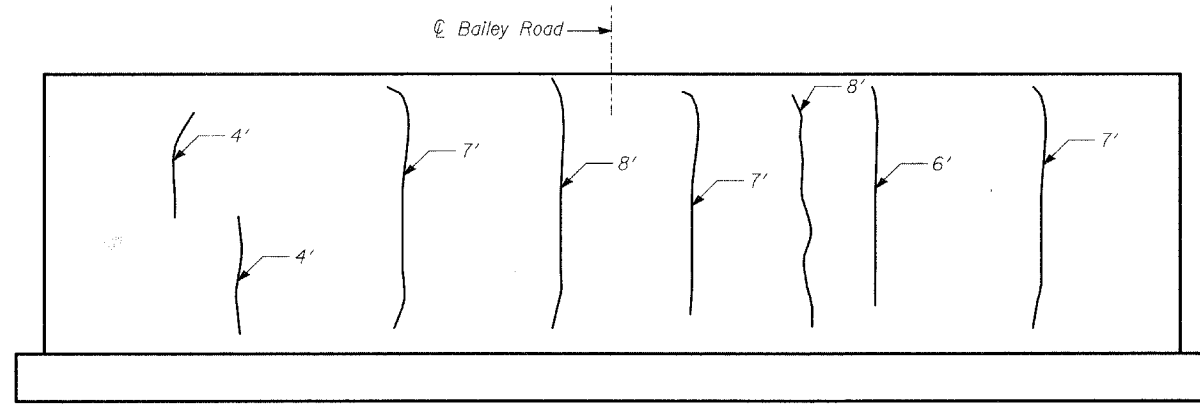
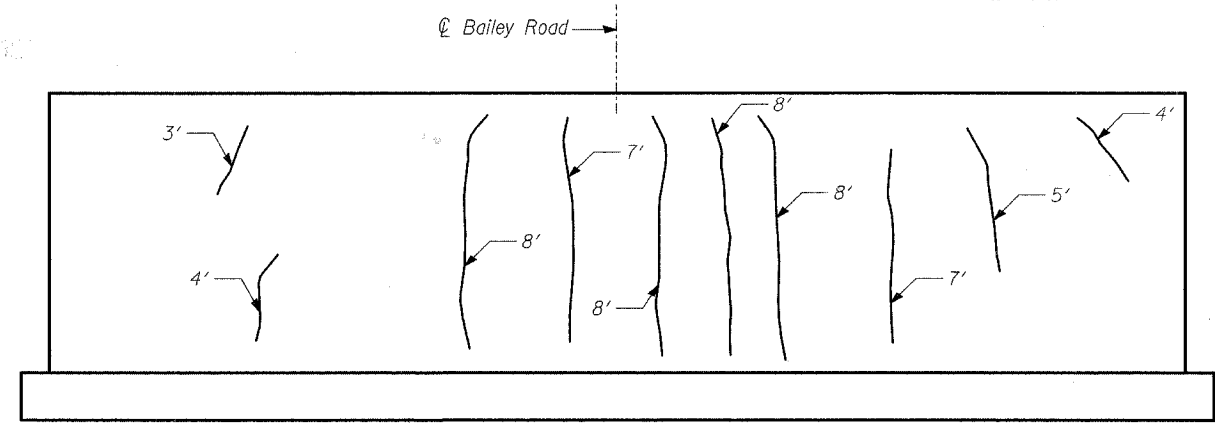


STATE OF ILLINOIS
DEPARTMENT OF TRANSPORTATION

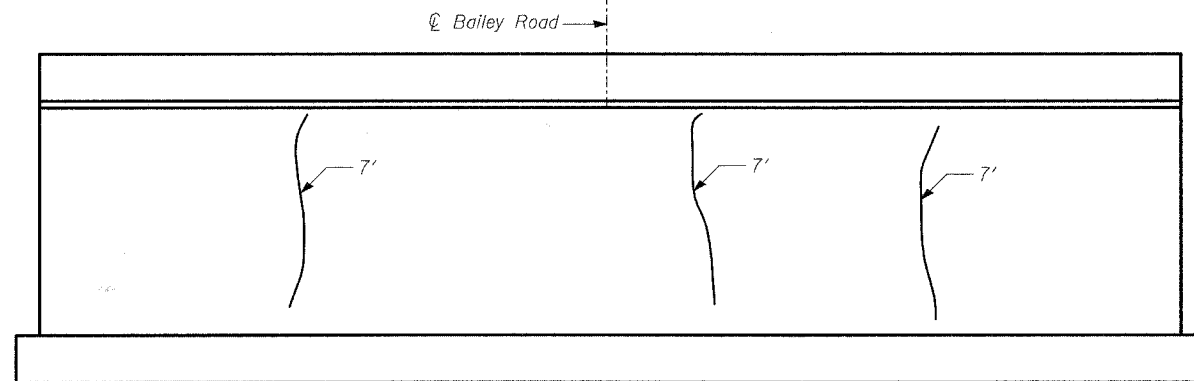
ROUTE NO.	SECTION	COUNTY	SHEETS	SHEET NO.	SHEET NO. - 31
1545	*	DUPAGE	97	52	39 - SHEETS
FED. ROAD DIST. NO.	ILLINOIS	FED. AID PROJ.			
• 00-00115-00-BR			CONTRACT NO. 83961		



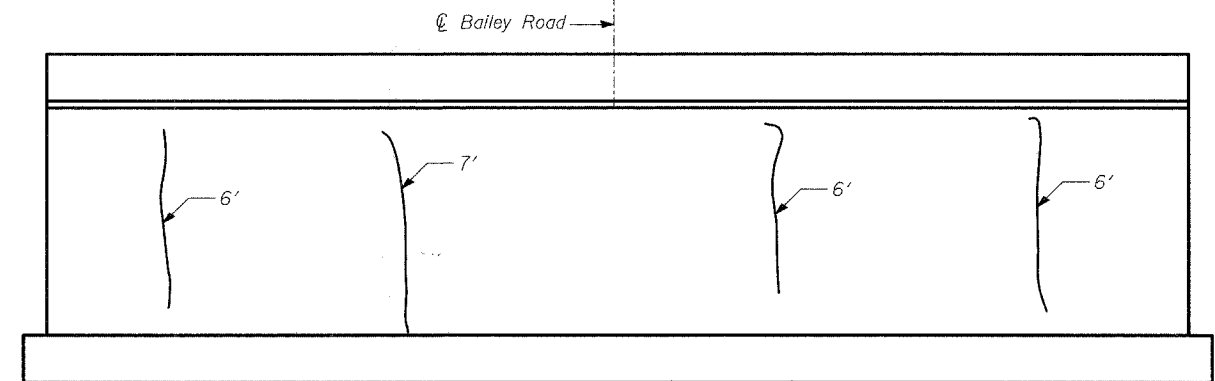
WEST ABUTMENT ELEVATION
(Looking West)



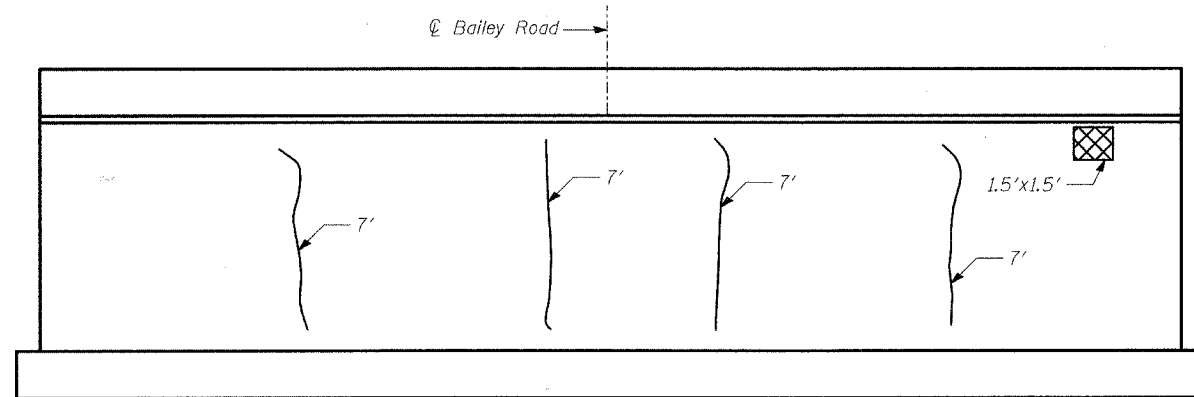
EAST ABUTMENT ELEVATION
(Looking East)



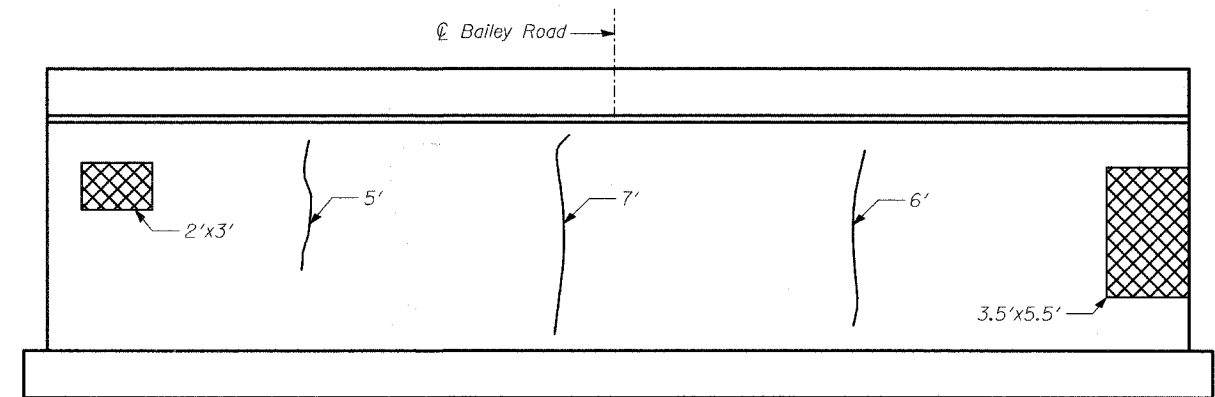
PIER 1 ELEVATION
(Looking West)



PIER 1 ELEVATION
(Looking East)



PIER 2 ELEVATION
(Looking West)





PIER 2 ELEVATION
(Looking East)

TYLIN INTERNATIONAL

DESIGNED	- SP
CHECKED	- PF
DRAWN	- SNB
CHECKED	- SP

LEGEND

-  Epoxy Crack Injection
-  Structural Repair of Concrete (Depth equal to or less than 5")

BILL OF MATERIAL

ITEM	UNIT	TOTAL
Epoxy Crack Injection	FT	205
Structural Repair of Concrete (Depth equal to or less than 5")	SQ FT	28

SUBSTRUCTURE REPAIR

BAILEY ROAD OVER THE
WEST BRANCH OF THE DUPAGE RIVER
FAU 1545
SECTION 00-00115-00-BR STA. 2+99.15
DUPAGE COUNTY
S.N. 022-3028